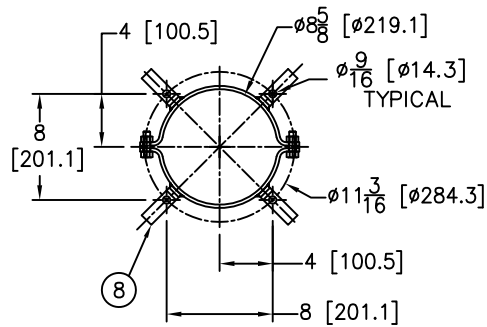
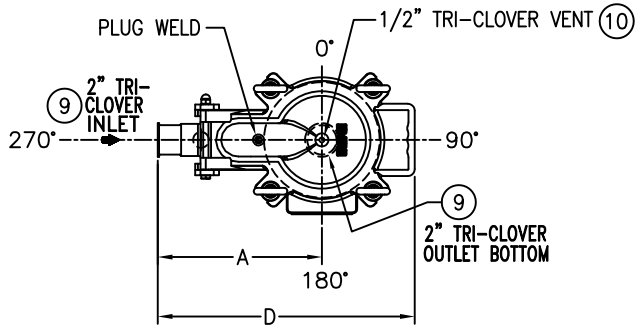


ITEM NUMBER	BAG SIZE	IN. / MM	IN. / MM	IN. / MM	IN. / MM	IN. / MM	IN. / MM	IN. / MM	IN. / MM	WEIGHT LBS / KGS
TBF0112SB02FTC-001	02	12-1/4 / 311.1	32-1/4 / 819.1	38-1/4 / 971.5	19-3/16 / 487.3	64-1/2 / 1638.3	18-3/4 / 476.2	8-5/8 / 219	13/16 / 20.6	93 / 42.2

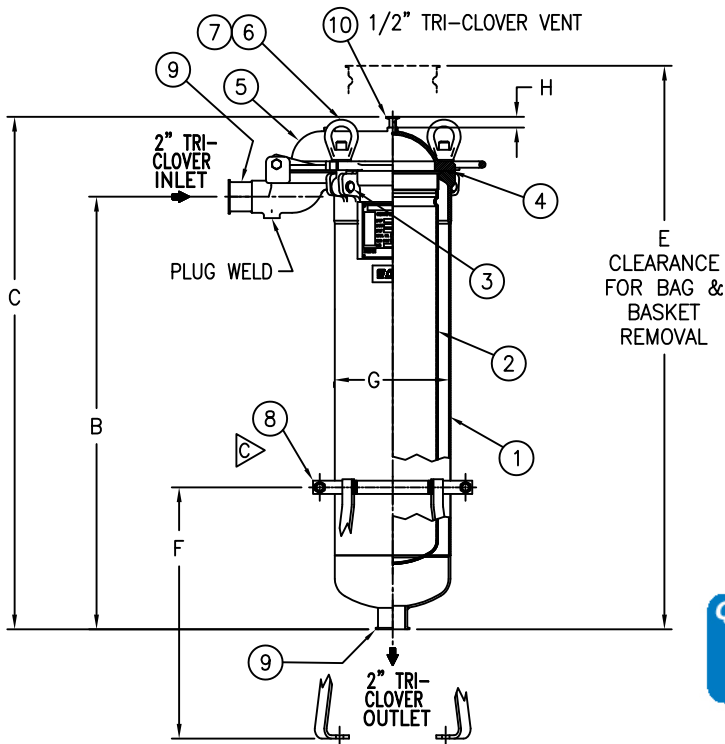


Ⓢ BOTTOM VIEW

REVISIONS

REV	DESCRIPTION	BY	ECO	DATE
D	UPDATED DRAWING	FJM	0131707	02/14/17

NO.	PART NAME	MATERIAL
1	BODY-EP*	SA-351 CF8M SA-312 TP 316
2	RESTRAINER BASKET-EP* PART NUMBER: L0001753	316 STAINLESS STEEL
3	PIN	SA-193 GR B8, SSTL
4	O-RINGS (2) PART NUMBERS: 811333 & L0000024	BUNA-N
5	COVER-EP*	SA-351 CF8M
6	EYE BOLT	SA-193 GR B8, SSTL
7	EYE NUT	SA-194 GR8, SSTL
8	ADJUSTABLE CLAMP-ON SUPPORT-EP* LEGS P/N L0002940SA-SSTL	STAINLESS STEEL
9	2" TRI-CLOVER-EP*	SS-316 (SEE NOTE 2)
10	1/2" TRI-CLOVER-EP*	SS-316 (SEE NOTE 3)



Quick & Discounted Pricing
[Click Here](#)
 Or Call 908.362.9981

NOTES:

- UNITS ARE DESIGNED, FABRICATED, BUT NOT STAMPED IN ACCORDANCE WITH THE ASME BOILER & PRESSURE VESSEL CODE SECTION VIII, DIVISION 1, IN COMPLIANCE TO CURRENT MANDATORY EDITION.
- INLET/OUTLET 2" TANK WELDING FERRULE CONNECTIONS TYPE 14MPW.
- VENT 1/2" TRI-CLOVER FERRULE TYPE TLS14AM (TRIMMED).
- MAWP: 150 PSI @ 250° F MDMT: -20° F @ 150 PSI
(10.3 BAR @ 121.1° C) (-28.9° C @ 10.3 BAR)
- MAXIMUM OPERATING TEMP. 400° F (204.4° C) WITH VITON O-RING.
- DIMENSIONS SHOWN IN [] ARE IN MILLIMETERS AND FOR REFERENCE ONLY. ACCEPTANCE OF THIS PART WILL BE BASED ON "INCH" UNITS & TOLERANCES ONLY.
- ALL INTERNAL SURFACES TO BE POLISHED TO A 0.8 MICRO METER FINISH.
- ALL EXTERNAL SURFACES TO BE ELECTRO-POLISHED.
NOTE: PARTS TO BE ELECTRO-POLISHED: OUTSIDE OF VESSEL, COVER, SUPPORTS, AND BASKET. DENOTED BY -EP*

VESSEL CODE: TBF-0102-AB10-020R-NS-B-NSS-S3S2-N-M

TOLERANCES (UNLESS OTHERWISE SPECIFIED)

DECIMAL:	.X ± .030
	.XX ± .010
	.XXX ± .005
FRACTIONAL:	± 1/16
NOZZLE ⌀ TO FLOOR:	1/8" < 4' > 1/4"
FACE TO FACE:	1/8" < 4' > 1/4"
ANGULAR:	± 1'
FLANGES (H/V):	± 1/2"
VESSEL OVERALL HT:	1"

REVIEWED FOR CLASSIFICATION PER PR-4

⚠ CRITICAL ⚠ SIGNIFICANT

CUSTOMER INFO	
NAME	
P.O. NO.	
S.O. NO.	
QUANTITY	
PART NO.	TBF0112SB02FTC-001

DRAWN BY FJM	HYDRAULICS GROUP FILTRATION DIVISION GALESBURG, MICHIGAN, USA • TINTON FALLS, NEW JERSEY, USA			
SCALE AS DRAWN				
RESTRICTION RESTRICTION				
SHEET 1 OF 1				
PROJECTION THIRD ANGLE	DATE 05/19/11	SIZE A	DWG FILENAME SDI-09084	REV D
<small>EATON CORPORATION - CONFIDENTIAL AND PROPRIETARY NOTICE TO PERSONS RECEIVING THIS DRAWING AND/OR TECHNICAL INFORMATION THIS DOCUMENT, INCLUDING THE DRAWING AND INFORMATION CONTAINED THEREON IS CONFIDENTIAL AND IS THE EXCLUSIVE PROPERTY OF EATON AT ANY TIME. BY TAKING THE POSSESSION OF THIS DOCUMENT THE RECIPIENT ACKNOWLEDGES AND AGREES THAT THIS DOCUMENT CANNOT BE USED IN ANY MANNER ADVERSE TO THE INTEREST OF EATON AND THAT NO PORTION OF THIS DRAWING MAY BE COPIED OR OTHERWISE REPRODUCED WITHOUT THE PRIOR WRITTEN CONSENT OF EATON, IN THE CASE OF CONFLICT CONTRACTUAL PROVISIONS, THIS NOTICE SHALL GOVERN THE STATUS OF THIS DOCUMENT. 2017 EATON CORPORATION - ALL RIGHTS RESERVED.</small>				

BOLT HOLES MUST STRADDLE ⌀ MACHINED PARTS TO BE FREE OF BURRS FOR ADDITIONAL TOLERANCE DETAILS REF. ES-211, ES-222 AND ES-223