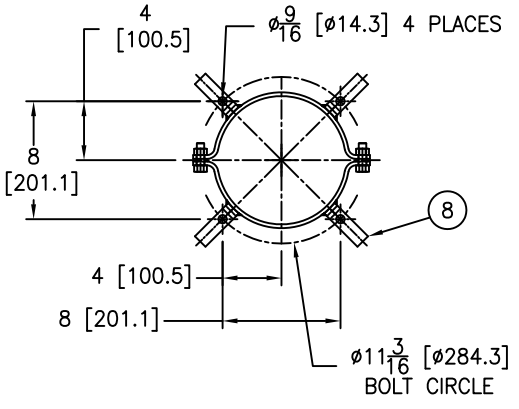
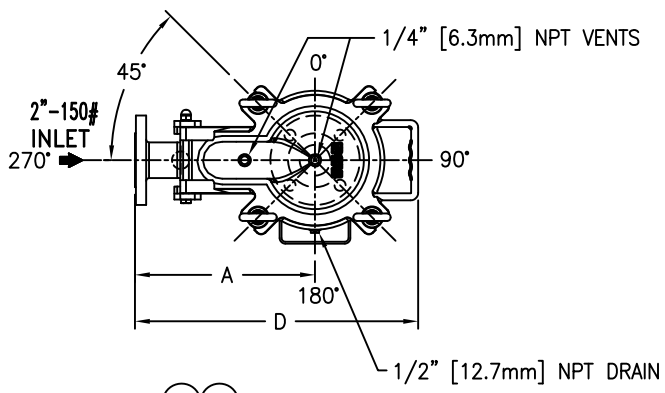


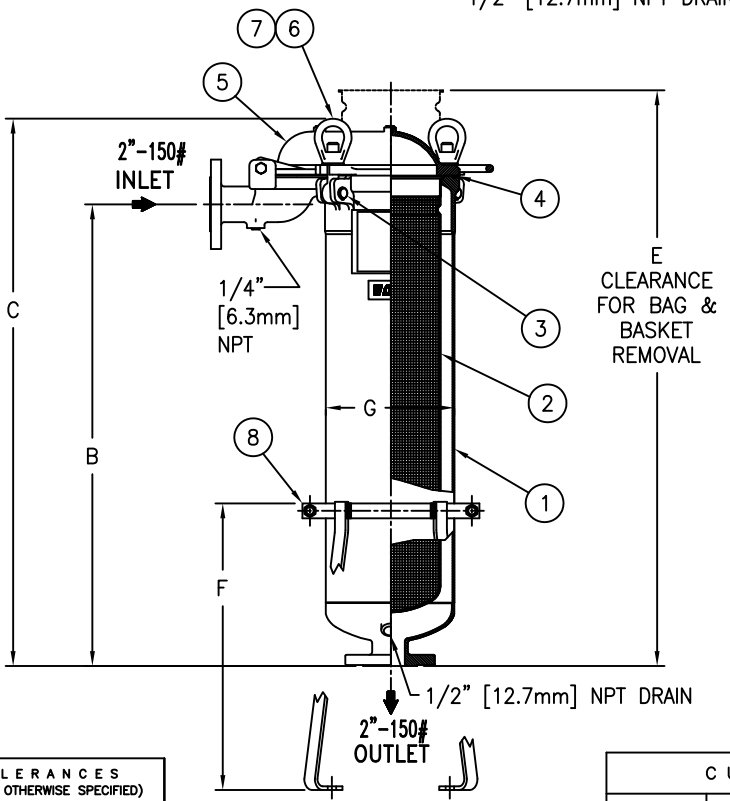
ITEM NUMBER	BAG SIZE	A IN. / MM	B IN. / MM	C IN. / MM	D IN. / MM	E IN. / MM	F IN. / MM	G IN. / MM	WEIGHT LBS / KGS
TBF0111SB02F	01	12-1/8 / 308	15-1/2 / 394	21-1/4 / 540	19-1/8 / 486	32 / 813	19-1/4 / 489	8-5/8 / 219	80 / 36.3
TBF0112SB02F	02	12-1/8 / 308	31 / 788	36-3/4 / 934	19-1/8 / 486	63 / 1600	19-1/4 / 489	8-5/8 / 219	93 / 42.2

REVISIONS				
REV	DESCRIPTION	BY	ECO	DATE
G	UPDATE DRAWING NOTE 1	FJM	0119279	01/26/16



BOTTOM VIEW

NO.	PART NAME	MATERIAL
1	BODY	SA-351 CF8M SA-312 TP 316
2	RESTRAINER BASKET 01 SIZE P/N L0001752 02 SIZE P/N L0001753	316 STAINLESS STEEL
3	PIN	SA-193 GR B7, ZINC PL
4	O-RINGS (2) P/N 811333 & L0000024	BUNA-N
5	COVER	SA-351 CF8M
6	EYE BOLT	SA-193 GR B7, ZINC PL
7	EYE NUT	SA-194 GR 2H, ZINC PL
8	SUPPORT LEGS P/N L0002940SA-CSTL	CSTL EPOXY COATED



NOTES:

1. UNITS ARE DESIGNED, FABRICATED AND "UM" STAMPED IN ACCORDANCE WITH THE ASME BOILER & PRESSURE VESSEL CODE SECTION VIII, DIVISION 1, IN COMPLIANCE TO CURRENT MANDATORY EDITION.
2. INLET/OUTLET FLANGED CONNECTIONS PER ANSI B16.5.
3. MAWP: 150 PSI @ 250° F MDMT: -20° F @ 150 PSI
(10.3 BAR @ 121.1° C) (-28.9° C @ 10.3 BAR)
4. MAXIMUM OPERATING TEMP. 400° F (204.4° C) WITH VITON O-RING.
5. DIMENSIONS SHOWN IN [] ARE IN MILLIMETERS AND FOR REFERENCE ONLY. ACCEPTANCE OF THIS PART WILL BE BASED ON "INCH" UNITS & TOLERANCES ONLY.

Quick & Discounted Pricing
[Click Here](#)
 Or Call 908.362.9981

01 SIZE	VESSEL CODE: TBF-0101-AB10-020A-MS-B-NCS-S1S1
02 SIZE	VESSEL CODE: TBF-0102-AB10-020A-MS-B-NCS-S1S1

TOLERANCES (UNLESS OTHERWISE SPECIFIED)	
DECIMAL:	.X ± .030 .XX ± .010 .XXX ± .005
FRACTIONAL:	± 1/16
NOZZLE Q TO FLOOR:	1/8" < 4' > 3/4"
FACE TO FACE:	1/4" < 4' > 1/2"
ANGULAR:	± 1'
FLANGES (H/V):	± 1/2"
VESSEL OVERALL HT:	1"

REVIEWED FOR CLASSIFICATION PER PR-4
 CRITICAL SIGNIFICANT

CUSTOMER INFO	
NAME	
P.O. NO.	
S.O. NO.	
QUANTITY	
PART NO.	SEE ABOVE

DRAWN BY LF	HYDRAULICS GROUP FILTRATION DIVISION GALESBURG, MICHIGAN, USA • TINTON FALLS, NEW JERSEY, USA		
SCALE AS DRAWN	TITLE TOPLINE (TBF) FILTER VESSEL 2" 150# RF FLANGED CONNECTIONS STAINLESS STEEL SS-316		
RESTRICTION RESTRICTED	DATE 07/27/99	SIZE A	DWG FILENAME TBF11XS
SHEET 1 OF 1	PROJECTION THIRD ANGLE	REV G	

EATON CORPORATION - CONFIDENTIAL AND PROPRIETARY NOTICE TO PERSONS RECEIVING THIS DRAWING AND/OR TECHNICAL INFORMATION
 THIS DOCUMENT, INCLUDING THE DRAWING AND INFORMATION CONTAINED THEREON IS CONFIDENTIAL AND IS THE EXCLUSIVE PROPERTY OF EATON AT ANY TIME. BY TAKING THE POSSESSION OF THIS DOCUMENT THE RECIPIENT ACKNOWLEDGES AND AGREES THAT THIS DOCUMENT CANNOT BE USED IN ANY MANNER ADVERSE TO THE INTEREST OF EATON AND THAT NO PORTION OF THIS DRAWING MAY BE COPIED OR OTHERWISE REPRODUCED WITHOUT THE PRIOR WRITTEN CONSENT OF EATON, IN THE CASE OF CONFLICT CONTRACTUAL PROVISIONS, THIS NOTICE SHALL GOVERN THE STATUS OF THIS DOCUMENT.
 2014 EATON CORPORATION - ALL RIGHTS RESERVED.