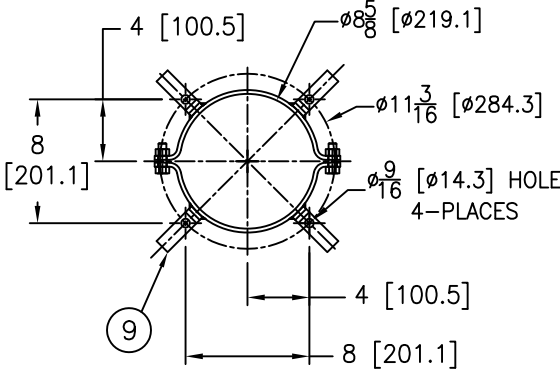
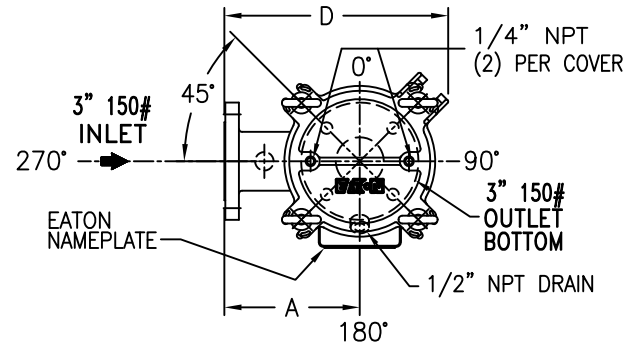


| ITEM NUMBER  | BAG SIZE | A<br>IN. / MM | B<br>IN. / MM | C<br>IN. / MM | D<br>IN. / MM | E<br>IN. / MM | F<br>IN. / MM | G<br>IN. / MM | WEIGHT<br>LBS / KGS |
|--------------|----------|---------------|---------------|---------------|---------------|---------------|---------------|---------------|---------------------|
| SBF0111SB03F | 01       | 8-11/16 / 220 | 19-1/2 / 495  | 26-5/8 / 676  | 14-3/8 / 365  | 38 / 965      | 19-1/4 / 489  | 8-5/8 / 219   | 96 / 43.5           |
| SBF0112SB03F | 02       | 8-11/16 / 220 | 35 / 889      | 42-1/8 / 1070 | 14-3/8 / 365  | 69 / 1753     | 19-1/4 / 489  | 8-5/8 / 219   | 114 / 51.7          |

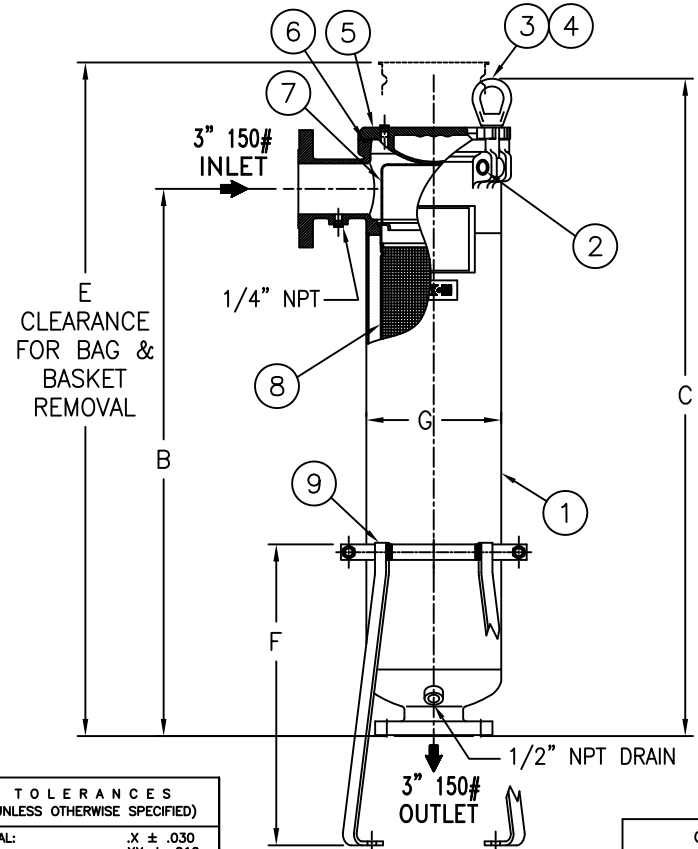
REVISIONS

| REV | DESCRIPTION            | BY  | ECO     | DATE     |
|-----|------------------------|-----|---------|----------|
| G   | UPDATED DRAWING NOTE 1 | FJM | 0119456 | 01/29/16 |



BOTTOM VIEW

| NO. | PART NAME   | MATERIAL                     |
|-----|---|------------------------------|
| 1   | BODY  | SA-351 CF8M<br>SA-312 TP 316 |
| 2   | PIN   | SA-193 GR B7, ZINC PL.       |
| 3   | EYE BOLT  | SA-193 GR B7, ZINC PL.       |
| 4   | EYE NUT   | SA-194 GR 2H ZINC PL.        |
| 5   | COVER   | SA-351 CF8M                  |
| 6   | O-RING P/N L0000024   | BUNA                         |
| 7   | BAG HOLD DOWN   | 316 STAINLESS STEEL          |
| 8   | RESTRAINER BASKET<br>P/N L0001752 01 SIZE<br>P/N L0001753 02 SIZE | 316 STAINLESS STEEL          |
| 9   | ADJUSTABLE CLAMP-ON SUPPORT<br>LEGS P/N L0002940SA-CSTL           | CARBON STEEL<br>EPOXY COATED |



**Quick & Discounted Pricing**  
[Click Here](#)  
 Or Call 908.362.9981

NOTES:

- UNITS ARE DESIGNED, FABRICATED AND "UM" STAMPED IN ACCORDANCE WITH THE ASME BOILER & PRESSURE VESSEL CODE SECTION VIII, DIVISION 1, IN COMPLIANCE TO CURRENT MANDATORY EDITION.
- INLET/OUTLET FLANGED CONNECTIONS PER ANSI B16.5.
- MAWP: 150 PSI @ 250° F MDMT: -20° F @ 150 PSI  
(10.3 BAR @ 121.1° C) (-28.9° C @ 10.3 BAR)
- MAXIMUM OPERATING TEMP. 400° F (204.1° C) WITH VITON O-RING.
- DIMENSIONS SHOWN IN [ ] ARE IN MILLIMETERS AND FOR REFERENCE ONLY. ACCEPTANCE OF THIS PART WILL BE BASED ON "INCH" UNITS & TOLERANCES ONLY.

|                           |                             |
|---------------------------|-----------------------------|
| SBF0111SB03F VESSEL CODE: | SBF-0101-AB10-030A-MS-B-NCS |
| SBF0112SB03F VESSEL CODE: | SBF-0102-AB10-030A-MS-B-NCS |

| TOLERANCES (UNLESS OTHERWISE SPECIFIED) |  |
|---|--|
| DECIMAL:                                | .X ± .030<br>.XX ± .010<br>.XXX ± .005 |
| FRACTIONAL:                             | ± 1/16                                 |
| NOZZLE Ø TO FLOOR:                      | 1/8" < 4' > 1/4"                       |
| FACE TO FACE:                           | 1/8" < 4' > 1/4"                       |
| ANGULAR:                                | ± 1'                                   |
| FLANGES (H/V):                          | ± 1/2"                                 |
| VESSEL OVERALL HT:                      | 1"                                     |

REVIEWED FOR CLASSIFICATION PER PR-4  
 CRITICAL SIGNIFICANT

| CUSTOMER INFO |           |
|---------------|-----------|
| NAME          |           |
| P.O. NO.      |           |
| S.O. NO.      |           |
| QUANTITY      |           |
| PART NO.      | SEE ABOVE |

|                        |               |   |                       |
|------------------------|---------------|---|-----------------------|
| DRAWN BY LF            |               | HYDRAULICS GROUP<br>FILTRATION DIVISION<br>GALESBURG, MICHIGAN, USA • TINTON FALLS, NEW JERSEY, USA |                       |
| SCALE AS DRAWN         |               |   |                       |
| RESTRICTION RESTRICTED |               | TITLE   |                       |
| SHEET 1 OF 1           |               | SIDELINE (SBF) BAG FILTER<br>3" 150# RF FLANGED CONNECTIONS<br>MAT'L. SS-316                        |                       |
| PROJECTION THIRD ANGLE | DATE 07/27/99 | SIZE A  | DWG FILENAME SBF11XS3 |
|                        |               |   | REV G                 |

EATON CORPORATION - CONFIDENTIAL AND PROPRIETARY NOTICE TO PERSONS RECEIVING THIS DRAWING AND/OR TECHNICAL INFORMATION THIS DOCUMENT, INCLUDING THE DRAWING AND INFORMATION CONTAINED THEREON IS CONFIDENTIAL AND IS THE EXCLUSIVE PROPERTY OF EATON AT ANY TIME. BY TAKING THE POSSESSION OF THIS DOCUMENT THE RECIPIENT ACKNOWLEDGES AND AGREES THAT THIS DOCUMENT CANNOT BE USED IN ANY MANNER ADVERSE TO THE INTEREST OF EATON AND THAT NO PORTION OF THIS DRAWING MAY BE COPIED OR OTHERWISE REPRODUCED WITHOUT THE PRIOR WRITTEN CONSENT OF EATON, IN THE CASE OF CONFLICT CONTRACTUAL PROVISIONS, THIS NOTICE SHALL GOVERN THE STATUS OF THIS DOCUMENT.  
 2014 EATON CORPORATION - ALL RIGHTS RESERVED.