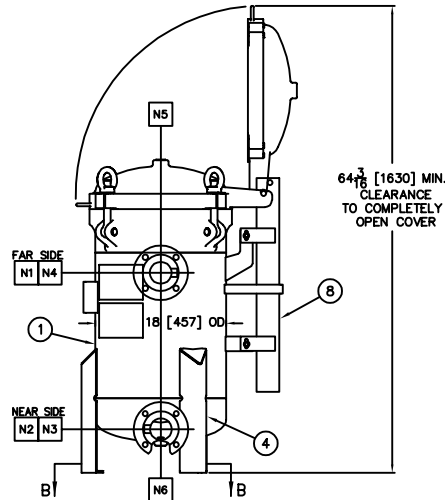
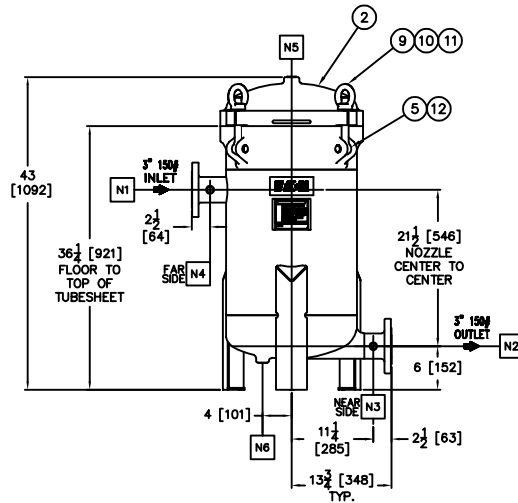


SECTION B-B
MOUNTING PLAN



NOZZLE SCHEDULE

MARK	QTY	SIZE	TYPE	RATING	NECK	SERVICE
N1	1	3	ANSI FLANGED	150	0.24 [6]	INLET
N2	1	3	ANSI FLANGED	150	0.24 [6]	OUTLET
N3,4	1	1/2	NPTI	----	NA	AUXILIARY CONN.
N5	1	1	NPTI	----	NA	VENT
N6	1	1	NPTI	----	NA	DRAIN

CUSTOMER INFO	
NAME	
P.O. NO.	
TAG NO.	
S.O. NO.	
PART NO.	F3AV0300018-304

TOLERANCES (UNLESS OTHERWISE SPECIFIED)	
DECIMAL:	.X ± .030 XXX ± .010 XXX ± .005
FRACTIONAL:	± 1/16 ± 1/32 ± 1/64
NOZZLE Ø TO FLOOR:	± 1/16
FACE TO FACE:	± 1/16
ANGULAR:	± 1°
FLANGES (N/A):	± 1/16
VESEL OVERALL HT:	± 1/16
BOLT HOLES MUST STRADDLE Ø	
MACHINED PARTS TO BE FREE OF BURRS	
FOR ADDITIONAL TOLERANCE DETAILS	
REF. ES-211, ES-222 AND ES-223	
REVIEWED FOR CLASSIFICATION PER PR-4	
CRITICAL	SIGNIFICANT

DRAWN BY
QUINTEL/LEVIS

SCALE
AS DRAWN

RESTRICTION
RESTRICTED

SHEET
1 OF 1

PROJECTION
THIRD ANGLE



HYDRAULICS GROUP
FILTRATION DIVISION
GALESBURG, MICHIGAN, USA • TINTON FALLS, NEW JERSEY, USA

TITLE
PROLINE 150 (PMBF-03) FILTER VESSEL TYPE HE 3" 150#
RF FLG INLET/TANGENTIAL OUTLET INLINE STYLE SS-304

DATE 5/1/15 SIZE B DWG FILENAME F3AV0300018-304 REV C

THIS DOCUMENT, INCLUDING THE DRAWING AND INFORMATION CONTAINED THEREIN IS CONFIDENTIAL, AND IS THE EXCLUSIVE PROPERTY OF EATON. BY MAKING THE INFORMATION CONTAINED HEREIN AVAILABLE TO YOU, EATON IS NOT MAKING ANY WARRANTY, REPRESENTATION OR GUARANTEE, AND EATON IS NOT ASSUMING ANY LIABILITY FOR THE USE OF THIS INFORMATION. EATON SHALL BE RESPONSIBLE FOR THE STATUS OF THIS DOCUMENT. NO PORTION OF THIS DRAWING MAY BE COPIED OR OTHERWISE REPRODUCED WITHOUT THE PRIOR WRITTEN CONSENT OF EATON, IN THE CASE OF CONFIDENTIAL INFORMATION, THIS NOTICE SHALL REMAIN THE PROPERTY OF EATON. © 2016 EATON CORPORATION - ALL RIGHTS RESERVED.

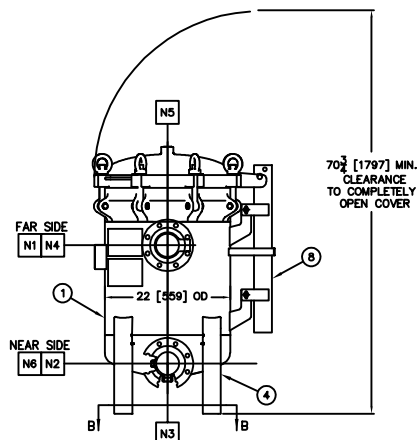
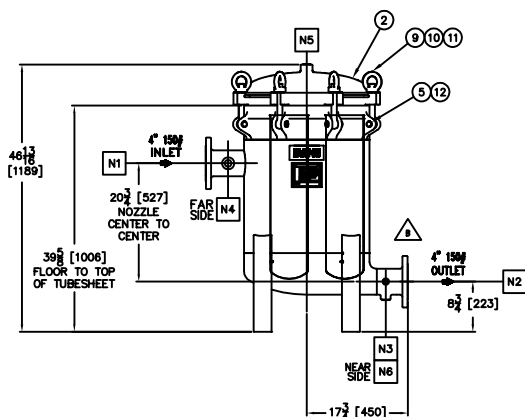
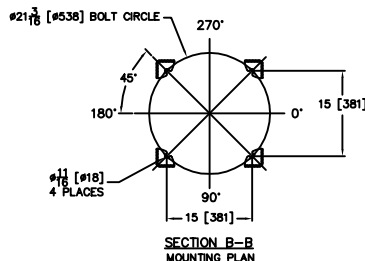
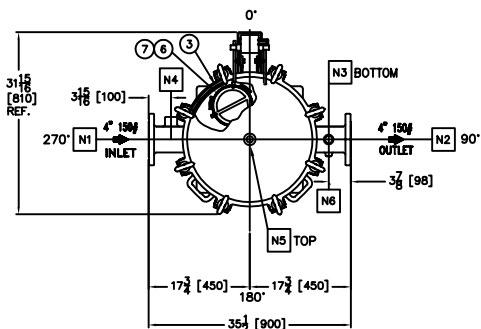
Quick & Discounted Pricing
Click Here
Or Call 908.362.9981

NOTES:

- DIMENSIONS SHOWN IN [] ARE IN MILLIMETERS AND FOR REFERENCE ONLY. ACCEPTANCE OF THIS PART WILL BE BASED ON "INCH" UNITS & TOLERANCES ONLY.
- INLET / OUTLET FLANGE CONNECTIONS PER ANSI B16.5 AND ALL BOLT HOLES ARE TO STRADDLE NATURAL CENTERLINES.
- UNITS ARE DESIGNED AND FABRICATED TO GOOD ENGINEERING PRACTICE.
- DESIGN DATA:
DESIGN PRESSURE - 150 PSI [10 BAR]
DESIGN TEMPERATURE - 200° F [93° C]
MDMT - -20° F [-28.9° C] @ 150 PSI [10 BAR]
CORROSION ALLOWANCE- NONE
RADIOGRAPHY- NONE
HYDROSTATIC TEST PRESSURE - 195 PSI [13.4 BAR]
- APPROX WEIGHT (DRY): 351 LBS [159KG]
- APPROX SHIPPING WEIGHT: 382 LBS [173 KG]
- PART NO.: NAFTA --: F3AV0300018-304
- VESSEL CODE : NAFTA --: PMBF-0302-BB10-030A-NT-11HE
- UNIT ASSEMBLY DWG: ASU0000010
- THE SPARE PARTS FOR RE-ORDER.

ITEM	DRAWING NUMBER	DESCRIPTION
12		CIRCLIP
11		WASHER
10		RING NUT
9		EYE BOLT
8		SPRING ASSISTED MECHANISM
7		FILTER BAG HOLD DOWN P/N L0000584-304
6		RESTRAINER BASKET P/N L0003232
5		PIN
4		LEGS
3		O-RING P/N RPS0000084
2		COVER
1		BODY
		ITEM

PART LIST FOR: F3AV0300018L304



Quick & Discounted Pricing
[Click Here](#)
 Or Call 908.362.9981

NOZZLE SCHEDULE						
MARK	QTY	SIZE	TYPE	RATING	NECK	SERVICE
N1	1	4	ANSI FLANGED	150	0.24 [6]	INLET
N2	1	4	ANSI FLANGED	150	0.24 [6]	OUTLET
N3	1	1	NPTI	----	NA	DRAIN
N4	1	1	NPTI	----	NA	INLET AUX CONN.
N5	1	1	NPTI	----	NA	VENT
N6	1	1/2	NPTI	----	NA	OUTLET AUX CONN.

CUSTOMER INFO	
NAME	
P.O. NO.	
TAG NO.	
S.O. NO.	
PART NO.	F3AV0400018-304

TOLERANCES (UNLESS OTHERWISE SPECIFIED)	
DECIMAL:	.XX ± .030 .XXX ± .010 .00XX ± .005
FRACTIONAL:	XX/64 ± .001
NOZZLE & TO FLOOR:	± .005
FACE TO FACE:	± .005
ANGULAR:	± .1°
FLANGES (H/A):	± .005
VESSEL OVERALL HT:	± .005
BOLT HOLES MUST STRADDLE & MACHINED PARTS TO BE FREE OF BURRS FOR ADDITIONAL TOLERANCE DETAILS REF. ES-211, ES-222 AND ES-223.	
REVIEWED FOR CLASSIFICATION PER PR-4	
CRITICAL	SIGNIFICANT

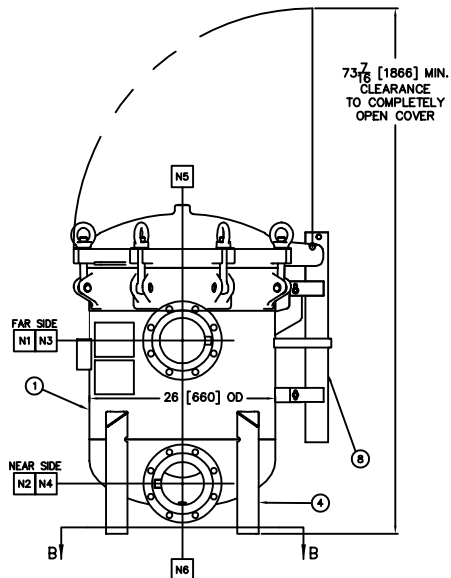
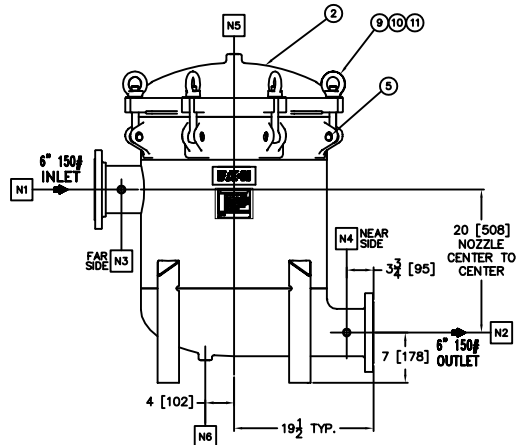
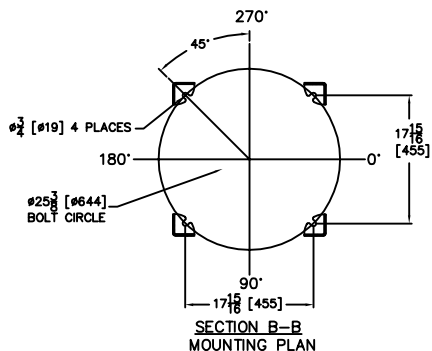
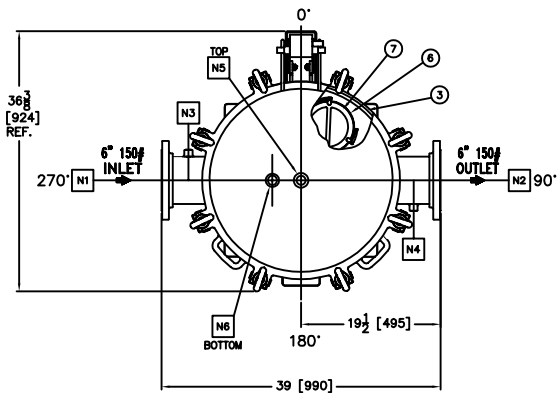
DRAWN BY R. DHONDE	SCALE AS DRAWN
RESTRICTION RESTRICTED	SHEET 1 OF 1
PROJECTION THIRD ANGLE	DATE 08/14/12

PART LIST FOR: F3AV0400018-304	
ITEM	DESCRIPTION
12	CIRCLIP
11	WASHER
10	RING NUT
9	EYE BOLT
8	SPRING ASSISTED MECHANISM
7	FILTER BAG HOLD DOWN P/N L0000584-304
6	RESTRAINER BASKET P/N L0003232
5	PIN
4	LEGS
3	O-RING P/N L0000292
2	COVER
1	BODY
ITEM	DRAWING NUMBER
DESCRIPTION	

REVISIONS				
REV	DESCRIPTION	BY	ECO	DATE
A	NEW RELEASE	M. LEVIS	0104229	12/11/14
B	REVISED LUGS AND COVER, ADDED ITEM 12, CHANGED OUTLET GEOMETRY	M. LEVIS	0110380	4/27/2014
C	UPDATED DRAWING	FJM	0121687	4/4/16

- NOTES:**
- DIMENSIONS SHOWN IN [] ARE IN MILLIMETERS AND FOR REFERENCE ONLY. ACCEPTANCE OF THIS PART WILL BE BASED ON "INCH" UNITS & TOLERANCES ONLY.
 - INLET / OUTLET FLANGE CONNECTIONS PER ANSI B16.5 AND ALL BOLT HOLES ARE TO STRADDLE NATURAL CENTERLINES.
 - UNITS ARE DESIGNED AND FABRICATED TO GOOD ENGINEERING PRACTICE.
 - DESIGN DATA:
 DESIGN PRESSURE - 150 PSI [10 BAR]
 DESIGN TEMPERATURE - 200° F [93° C]
 MDMT - -20° F [-28.9° C] @ 150 PSI [10 BAR]
 CORROSION ALLOWANCE- NONE
 RADIOGRAPHY- NONE
 HYDROSTATIC TEST PRESSURE - 195 PSI [13.4 BAR]
 - APPROX WEIGHT (DRY): 496 LBS [225KG]
 - APPROX SHIPPING WEIGHT: 542 LBS [246 KG]
 - PART NO.: NAFTA - F3AV0400018-304
 - VESSEL CODE : NAFTA - PMBF-0402-BB10-040A-NT-11HE
 - UNIT ASSEMBLY DWG: L0003504
 - THE SPARE PARTS FOR RE-ORDER.

12	CIRCLIP	STEEL ZINC PLATED
11	WASHER	STEEL ZINC PLATED
10	RING NUT	STEEL ZINC PLATED
9	EYE BOLT	A193 GR.B7 ZINC PLATED
8	SPRING ASSISTED MECHANISM	STAINLESS STEEL
7	FILTER BAG HOLD DOWN P/N L0000584-304	SS-304
6	RESTRAINER BASKET P/N L0003232	SS-304
5	PIN	A193 GR.B7 ZINC PLATED
4	LEGS	STAINLESS STEEL
3	O-RING P/N L0000292	BUNA-N
2	COVER	SS-304
1	BODY	SS-304
ITEM	DRAWING NUMBER	DESCRIPTION



NOZZLE SCHEDULE

MARK	QTY	SIZE	TYPE	RATING	NECK	SERVICE
N1	1	6	ANSI FLANGED	150	0.24 [6]	INLET
N2	1	6	ANSI FLANGED	150	0.24 [6]	OUTLET
N3	1	1/2	NPTI	3000#		INLET AUX CONN.
N4	1	1/2	NPTI	----	NA	OUTLET AUX CONN.
N5	1	1	NPTI	----	NA	VENT
N6	1	1	NPTI	----	NA	DRAIN

CUSTOMER INFO	
NAME	
P.O. NO.	
TAG NO.	
S.O. NO.	
PART NO.	F3AV0600018-304

REVISIONS			
REV	DESCRIPTION	BY	DATE
A	NEW RELEASE	M. LEVIS	0103940 5/1/2015
B	UPDATED DRAWING	FJM	0121687 4/4/2016

Quick & Discounted Pricing
Click Here
 Or Call 908.362.9981

NOTES:

- DIMENSIONS SHOWN IN [] ARE IN MILLIMETERS AND FOR REFERENCE ONLY. ACCEPTANCE OF THIS PART WILL BE BASED ON "INCH" UNITS & TOLERANCES ONLY.
- INLET / OUTLET FLANGE CONNECTIONS PER ANSI B16.5 AND ALL BOLT HOLES ARE TO STRADDLE NATURAL CENTERLINES.
- UNITS ARE DESIGNED AND FABRICATED TO GOOD ENGINEERING PRACTICE.
- DESIGN DATA:
 DESIGN PRESSURE - 150 PSI [10 BAR]
 DESIGN TEMPERATURE - 200° F [93° C]
 MDMT - -20° F [-28.9° C] @ 150 PSI [10 BAR]
 CORROSION ALLOWANCE- NONE
 RADIOGRAPHY- NONE
 HYDROSTATIC TEST PRESSURE - 195 PSI [13.4 BAR]
- APPROX WEIGHT (DRY): 680 LBS [308 KG]
- APPROX SHIPPING WEIGHT: 734 LBS [332 KG]
- PART NO.: NAFTA -; F3AV0600018-304
- VESSEL CODE -; PMBF-0602-BB10-060A-NT-11HE
- UNIT ASSEMBLY DWG: ASU0000011
- SPARE PARTS FOR RE-ORDER.

12	CIRCLIP	STEEL ZINC PLATED
11	WASHER	STEEL ZINC PLATED
10	RING NUT	STEEL ZINC PLATED
9	EYE BOLT	A193 GR.B7 ZINC PLATED
8	SPRING ASSISTED MECHANISM	STAINLESS STEEL
7	FILTER BAG HOLD DOWN P/N L0000584-304	SS-304
6	RESTRAINER BASKET P/N L0003232	SS-304
5	PIN	A193 GR.B7 ZINC PLATED
4	LEGS	STAINLESS STEEL
3	O-RING P/N RPS0000085	BUNA-N
2	COVER	SS-304
1	BODY	SS-304
ITEM	PART NAME	MATERIAL

PART LIST FOR: F3AV0600018-304

DRAWN BY
 QUINTEL/ LEVIS

SCALE
 AS DRAWN

RESTRICTION
 RESTRICTED

SHEET
 1 OF 1

PROJECTION
 THIRD ANGLE

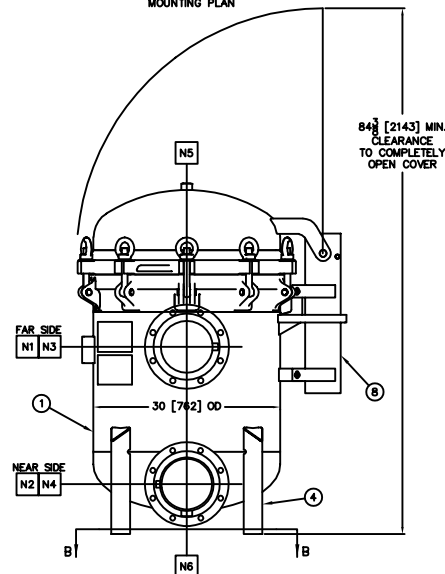
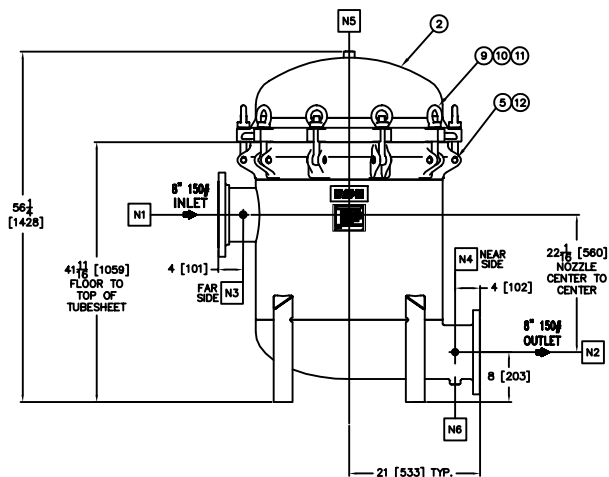
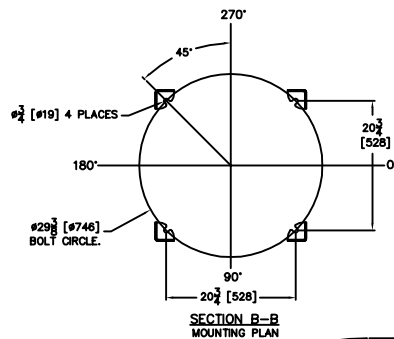
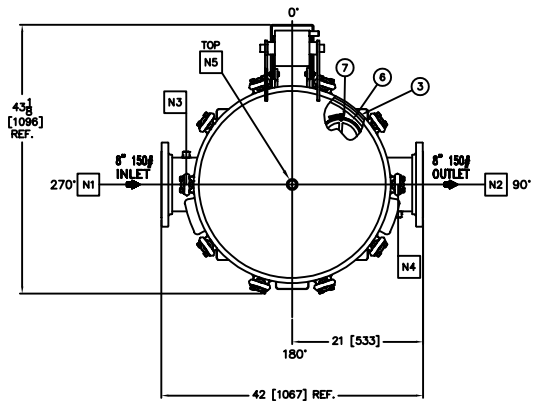


HYDRAULICS GROUP
 FILTRATION DIVISION
 GALESBURG, MICHIGAN, USA • TINTON FALLS, NEW JERSEY, USA

TITLE
 PROLINE 150 (PMBF-06) FILTER VESSEL TYPE HE 6" 150#
 RF FLG INLET/TANGENTIAL OUTLET INLINE STYLE SS-304

DATE 12/10/14 SIZE B DWG FILENAME F3AV0600018-304 REV B

EATON CORPORATION - CONFIDENTIAL AND PROPRIETARY NOTICE TO REPRODUCERS: THIS DRAWING AND/OR TECHNICAL INFORMATION IS THE PROPERTY OF EATON CORPORATION AND IS NOT TO BE REPRODUCED OR TRANSMITTED IN ANY FORM OR BY ANY MEANS, ELECTRONIC OR MECHANICAL, INCLUDING PHOTOCOPYING, RECORDING, OR BY ANY INFORMATION STORAGE AND RETRIEVAL SYSTEM, WITHOUT THE WRITTEN PERMISSION OF EATON CORPORATION. ANY UNAUTHORIZED REPRODUCTION OR TRANSMISSION OF THIS DRAWING OR TECHNICAL INFORMATION IS STRICTLY PROHIBITED AND WILL BE PROSECUTED TO THE FULL EXTENT OF THE LAW. EATON CORPORATION - ALL RIGHTS RESERVED.



NOZZLE SCHEDULE

MARK	QTY	SIZE	TYPE	RATING	NECK	SERVICE
N1	1	8	ANSI FLANGED	150	.31 [9]	INLET
N2	1	8	ANSI FLANGED	150	.31 [9]	OUTLET
N3	1	1/2	NPTI	3000#	----	INLET AUX. CONN.
N4	1	1/2	NPTI	----	NA	OUTLET AUX. CONN.
N5	1	1	NPTI	----	NA	VENT
N6	1	1	NPTI	----	NA	DRAIN

CUSTOMER INFO	
NAME	
P.O. NO.	
TAG NO.	
S.O. NO.	
PART NO.	F3AV0800018-304

REVISIONS				
REV	DESCRIPTION	BY	ECO	DATE
A	NEW RELEASE	M. LEVIS	0105176	5/1/2015
B	UPDATED DRAWING	FJM	0121687	4/4/2016
C	UPDATED PART NUMBER	FJM	0121829	4/7/2016

Quick & Discounted Pricing
Click Here
 Or Call 908.362.9981

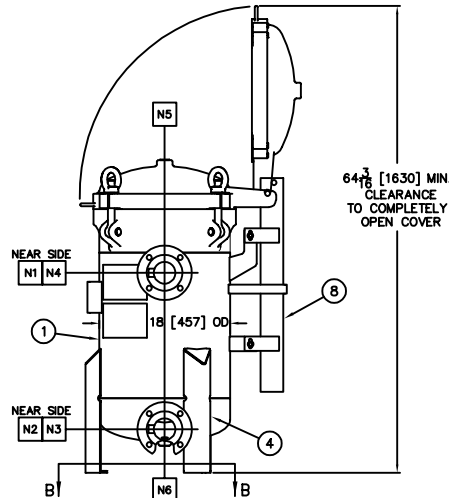
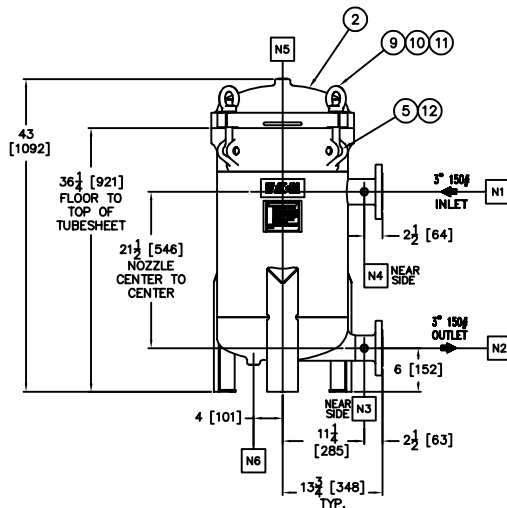
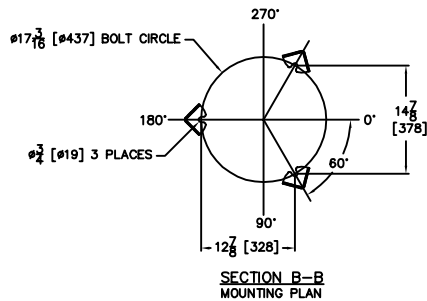
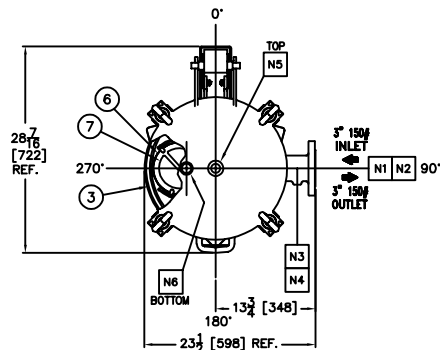
NOTES:

- DIMENSIONS SHOWN IN [] ARE IN MILLIMETERS AND FOR REFERENCE ONLY. ACCEPTANCE OF THIS PART WILL BE BASED ON "INCH" UNITS & TOLERANCES ONLY.
- INLET / OUTLET FLANGE CONNECTIONS PER ANSI B16.5 AND ALL BOLT HOLES ARE TO STRADDLE NATURAL CENTERLINES.
- UNITS ARE DESIGNED AND FABRICATED TO GOOD ENGINEERING PRACTICE.
- DESIGN DATA:
 DESIGN PRESSURE - 150 PSI [10 BAR]
 DESIGN TEMPERATURE - 200° F [93° C]
 MDMT - -20° F [-28.9° C] @ 150 PSI [10 BAR]
 CORROSION ALLOWANCE- NONE
 RADIOGRAPHY- NONE
 HYDROSTATIC TEST PRESSURE - 195 PSI [13.4 BAR]
- APPROX WEIGHT (DRY): 870 LBS [394 KG]
- APPROX SHIPPING WEIGHT: 939 LBS [426 KG]
- PART NO.: NAFTA - F3AV0800018-304
- VESSEL CODE : NAFTA - PMBF-0802-8B10-080A-NT-11HE
- UNIT ASSEMBLY DWG: ASU0000012
- SPARE PARTS FOR RE-ORDER.

12	CIRCLIP	STEEL ZINC PLATED
11	WASHER	STEEL ZINC PLATED
10	RING NUT	STEEL ZINC PLATED
9	EYE BOLT	A193 GR.B7 ZINC PLATED
8	SPRING ASSISTED MECHANISM	STAINLESS STEEL
7	FILTER BAG HOLD DOWN P/N L0000584-304	SS-304
6	RESTRAINER BASKET P/N L0003232	SS-304
5	PIN	A193 GR.B7 ZINC PLATED
4	LEGS	STAINLESS STEEL
3	O-RING P/N RPS0000068	BUNA-N
2	COVER	SS-304
1	BODY	SS-304
ITEM	PART NAME	MATERIAL

PART LIST FOR F3AV0800018-304

DRAWN BY QUINTEL/ LEVIS		HYDRAULICS GROUP FILTRATION DIVISION GALESBURG, MICHIGAN, USA • TINTON FALLS, NEW JERSEY, USA	
SCALE AS DRAWN		TITLE PROLINE 150 (PMBF-08) FILTER VESSEL TYPE HE 8" 150# RF FLG INLET/TANGENTIAL OUTLET INLINE STYLE SS-304	
RESTRICTION RESTRICTED		SHEET 1 OF 1	
PROJECTION THIRD ANGLE		DATE 01/28/15	REV C
SHEET 1 OF 1		SIZE B	DWG FILENAME F3AV0800018-304
<small> EATON CORPORATION - CONFIDENTIAL AND PROPRIETARY NOTICE TO REPRODUCING: THIS DRAWING AND/OR TECHNICAL INFORMATION IS THE EXCLUSIVE PROPERTY OF EATON. ANY REPRODUCTION OR USE OF THIS DOCUMENT WITHOUT THE WRITTEN CONSENT OF EATON, IN THE CASE OF CONTRACTS, PROPRIETARY, THIS NOTICE SHALL REMAIN THE PROPERTY OF EATON. </small>			



REVISIONS			
REV	DESCRIPTION	BY	ECO
A	NEW RELEASE	M. LEVIS	0104153
B	UPDATED DRAWING	FJM	0121687

Quick & Discounted Pricing
[Click Here](#)
 Or Call 908.362.9981

NOTES:

- DIMENSIONS SHOWN IN [] ARE IN MILLIMETERS AND FOR REFERENCE ONLY. ACCEPTANCE OF THIS PART WILL BE BASED ON "INCH" UNITS & TOLERANCES ONLY.
- INLET / OUTLET FLANGE CONNECTIONS PER ANSI B16.5 AND ALL BOLT HOLES ARE TO STRADDLE NATURAL CENTERLINES.
- UNITS ARE DESIGNED AND FABRICATED TO GOOD ENGINEERING PRACTICE.
- DESIGN DATA:
 DESIGN PRESSURE - 150 PSI [10 BAR]
 DESIGN TEMPERATURE - 200° F [93° C]
 MDMT - -20° F [-28.9° C] @ 150 PSI [10 BAR]
 CORROSION ALLOWANCE- NONE
 RADIOGRAPHY- NONE
 HYDROSTATIC TEST PRESSURE - 195 PSI [13.4 BAR]
- APPROX WEIGHT (DRY): 351 LBS [159KG]
- APPROX SHIPPING WEIGHT: 382 LBS [173 KG]
- PART NO.: NAFTA --: F3AV0300018L304
- VESSEL CODE : NAFTA --: PMBF-0302-BB10-030A-NT-11HE-L
- UNIT ASSEMBLY DWG: ASU0000007
- THE SPARE PARTS FOR RE-ORDER.

12	CIRCLIP	STEEL ZINC PLATED
11	WASHER	STEEL ZINC PLATED
10	RING NUT	STEEL ZINC PLATED
9	EYE BOLT	A193 GR.B7 ZINC PLATED
8	SPRING ASSISTED MECHANISM	STAINLESS STEEL
7	FILTER BAG HOLD DOWN P/N L0000584-304	SS-304
6	RESTRAINER BASKET P/N L0003232	SS-304
5	PIN	A193 GR.B7 ZINC PLATED
4	LEGS	STAINLESS STEEL
3	O-RING P/N RPS0000084	BUNA-N
2	COVER	SS-304
1	BODY	SS-304
ITEM	DRAWING NUMBER	DESCRIPTION

PART LIST FOR: F3AV0300018L304

NOZZLE SCHEDULE

MARK	QTY	SIZE	TYPE	RATING	NECK	SERVICE
N1	1	3	ANSI FLANGED	150	0.24 [6]	INLET
N2	1	3	ANSI FLANGED	150	0.24 [6]	OUTLET
N3,4	1	1/2	NPTI	----	NA	AUXILIARY CONN.
N5	1	1	NPTI	----	NA	VENT
N6	1	1	NPTI	----	NA	DRAIN

CUSTOMER INFO	
NAME	
P.O. NO.	
TAG NO.	
S.O. NO.	
PART NO.	F3AV0300018L304

TOLERANCES (UNLESS OTHERWISE SPECIFIED)	
DECIMAL:	X ± .030 J01 ± .010 J00X ± .005
FRACTIONAL:	± 1/16 ± 1/8 ± 1/4
NOZZLE Ø TO FLOOR:	± .005
FACE TO FACE:	± .005
ANGULAR:	± 1'
FLANGES (N/A):	± 1'
VESSEL OVERALL HT:	± 1"
BOLT HOLES MUST STRADDLE Ø	
MACHINED PARTS TO BE FREE OF BURRS	
FOR ADDITIONAL TOLERANCE DETAILS	
REF. ES-211, ES-222 AND ES-223	
REVIEWED FOR CLASSIFICATION PER PR-4	
CRITICAL	SIGNIFICANT

DRAWN BY
 QUINTEL/LEVIS
 SCALE
 AS DRAWN

RESTRICTION
 RESTRICTED
 SHEET
 1 OF 1

PROJECTION
 THIRD ANGLE

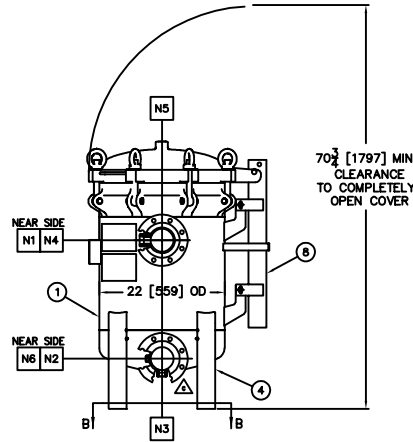
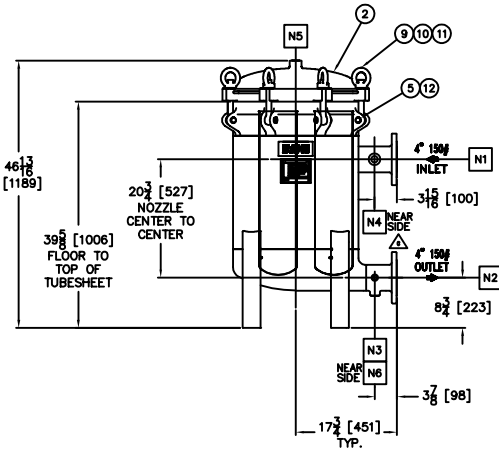
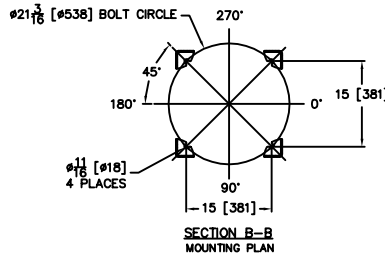
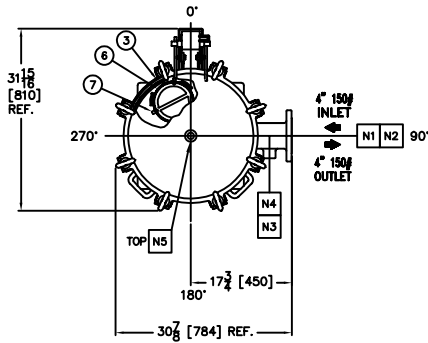


HYDRAULICS GROUP
 FILTRATION DIVISION
 GALESBURG, MICHIGAN, USA • TINTON FALLS, NEW JERSEY, USA

TITLE
 PROLINE 150 (PMBF-03) FILTER VESSEL TYPE HE 3" 150#
 RF FLG INLET/TANGENTIAL OUTLET LOOP STYLE SS-304

DATE 11/05/14 SIZE B DWO FILENAME F3AV0300018L304 REV B

THIS DOCUMENT, INCLUDING THE DRAWING AND INFORMATION CONTAINED THEREIN IS CONFIDENTIAL AND IS THE EXCLUSIVE PROPERTY OF EATON AT ANY TIME, BY WHOMEVER THE POSSESSION OF THIS DOCUMENT IS REPORTEDLY OBTAINED AND ANY DISCLOSURE OF THIS DOCUMENT TO ANY OTHER PARTY WITHOUT THE WRITTEN CONSENT OF EATON, IN THE CASE OF CONTRACTING CONTRACTUAL INFORMATION, THIS NOTICE SHALL REMAIN THE PROPERTY OF EATON. © 2014 EATON CORPORATION - ALL RIGHTS RESERVED.

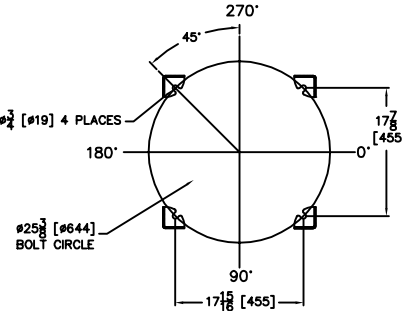
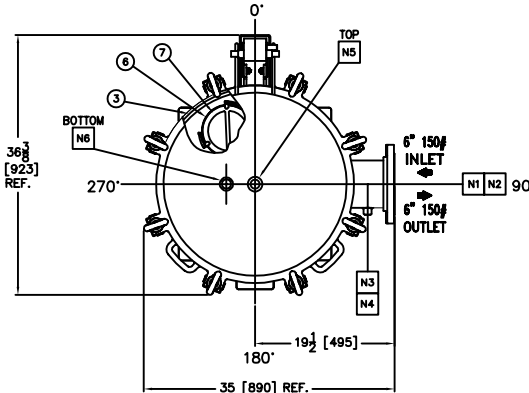


Quick & Discounted Pricing
Click Here
Or Call 908.362.9981

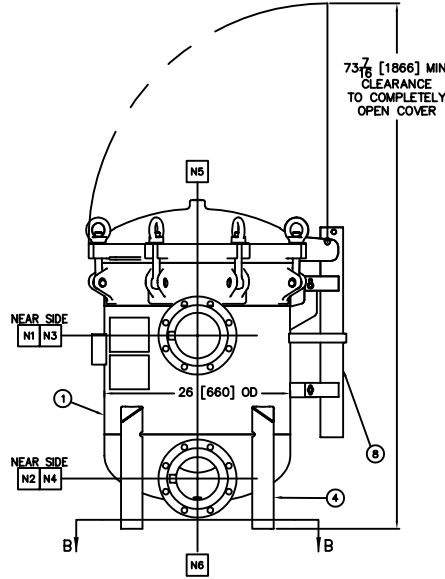
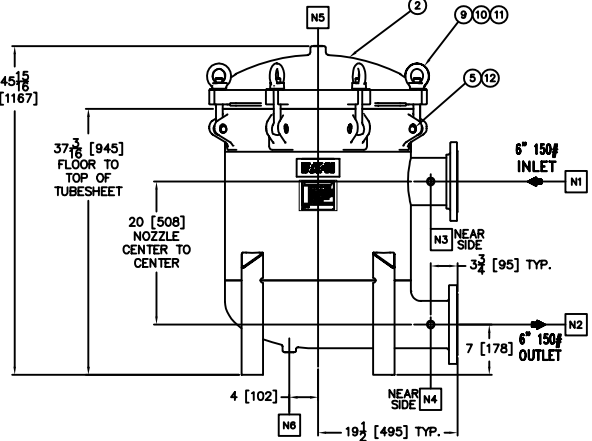
NOZZLE SCHEDULE						
MARK	QTY	SIZE	TYPE	RATING	NECK	SERVICE
N1	1	4	ANSI FLANGED	150	0.24 [6]	INLET
N2	1	4	ANSI FLANGED	150	0.24 [6]	OUTLET
N3	1	1	NPTI	----	NA	DRAIN
N4	1	1	NPTI	----	NA	INLET AUX CONN.
N5	1	1	NPTI	----	NA	VENT
N6	1	1/2	NPTI	----	NA	OUTLET AUX CONN.

CUSTOMER INFO	
NAME	
P.O. NO.	
TAG NO.	
S.O. NO.	
PART NO.	F3AV0400018L304

TOLERANCES (UNLESS OTHERWISE SPECIFIED)	
DECIMAL:	.X ± .030 .XX ± .010 .XXX ± .005
FRACTIONAL:	1/16 ± .005 1/8 ± .005 1/4 ± .005 3/8 ± .005 1/2 ± .005 3/4 ± .005 1 ± .005 1 1/2 ± .005 2 ± .005 3 ± .005 4 ± .005 6 ± .005 8 ± .005 10 ± .005 12 ± .005 14 ± .005 16 ± .005 18 ± .005 20 ± .005 22 ± .005 24 ± .005 26 ± .005 28 ± .005 30 ± .005 32 ± .005 34 ± .005 36 ± .005 38 ± .005 40 ± .005 42 ± .005 44 ± .005 46 ± .005 48 ± .005 50 ± .005 52 ± .005 54 ± .005 56 ± .005 58 ± .005 60 ± .005 62 ± .005 64 ± .005 66 ± .005 68 ± .005 70 ± .005 72 ± .005 74 ± .005 76 ± .005 78 ± .005 80 ± .005 82 ± .005 84 ± .005 86 ± .005 88 ± .005 90 ± .005 92 ± .005 94 ± .005 96 ± .005 98 ± .005 100 ± .005 102 ± .005 104 ± .005 106 ± .005 108 ± .005 110 ± .005 112 ± .005 114 ± .005 116 ± .005 118 ± .005 120 ± .005 122 ± .005 124 ± .005 126 ± .005 128 ± .005 130 ± .005 132 ± .005 134 ± .005 136 ± .005 138 ± .005 140 ± .005 142 ± .005 144 ± .005 146 ± .005 148 ± .005 150 ± .005 152 ± .005 154 ± .005 156 ± .005 158 ± .005 160 ± .005 162 ± .005 164 ± .005 166 ± .005 168 ± .005 170 ± .005 172 ± .005 174 ± .005 176 ± .005 178 ± .005 180 ± .005 182 ± .005 184 ± .005 186 ± .005 188 ± .005 190 ± .005 192 ± .005 194 ± .005 196 ± .005 198 ± .005 200 ± .005 202 ± .005 204 ± .005 206 ± .005 208 ± .005 210 ± .005 212 ± .005 214 ± .005 216 ± .005 218 ± .005 220 ± .005 222 ± .005 224 ± .005 226 ± .005 228 ± .005 230 ± .005 232 ± .005 234 ± .005 236 ± .005 238 ± .005 240 ± .005 242 ± .005 244 ± .005 246 ± .005 248 ± .005 250 ± .005 252 ± .005 254 ± .005 256 ± .005 258 ± .005 260 ± .005 262 ± .005 264 ± .005 266 ± .005 268 ± .005 270 ± .005 272 ± .005 274 ± .005 276 ± .005 278 ± .005 280 ± .005 282 ± .005 284 ± .005 286 ± .005 288 ± .005 290 ± .005 292 ± .005 294 ± .005 296 ± .005 298 ± .005 300 ± .005 302 ± .005 304 ± .005 306 ± .005 308 ± .005 310 ± .005 312 ± .005 314 ± .005 316 ± .005 318 ± .005 320 ± .005 322 ± .005 324 ± .005 326 ± .005 328 ± .005 330 ± .005 332 ± .005 334 ± .005 336 ± .005 338 ± .005 340 ± .005 342 ± .005 344 ± .005 346 ± .005 348 ± .005 350 ± .005 352 ± .005 354 ± .005 356 ± .005 358 ± .005 360 ± .005 362 ± .005 364 ± .005 366 ± .005 368 ± .005 370 ± .005 372 ± .005 374 ± .005 376 ± .005 378 ± .005 380 ± .005 382 ± .005 384 ± .005 386 ± .005 388 ± .005 390 ± .005 392 ± .005 394 ± .005 396 ± .005 398 ± .005 400 ± .005 402 ± .005 404 ± .005 406 ± .005 408 ± .005 410 ± .005 412 ± .005 414 ± .005 416 ± .005 418 ± .005 420 ± .005 422 ± .005 424 ± .005 426 ± .005 428 ± .005 430 ± .005 432 ± .005 434 ± .005 436 ± .005 438 ± .005 440 ± .005 442 ± .005 444 ± .005 446 ± .005 448 ± .005 450 ± .005 452 ± .005 454 ± .005 456 ± .005 458 ± .005 460 ± .005 462 ± .005 464 ± .005 466 ± .005 468 ± .005 470 ± .005 472 ± .005 474 ± .005 476 ± .005 478 ± .005 480 ± .005 482 ± .005 484 ± .005 486 ± .005 488 ± .005 490 ± .005 492 ± .005 494 ± .005 496 ± .005 498 ± .005 500 ± .005 502 ± .005 504 ± .005 506 ± .005 508 ± .005 510 ± .005 512 ± .005 514 ± .005 516 ± .005 518 ± .005 520 ± .005 522 ± .005 524 ± .005 526 ± .005 528 ± .005 530 ± .005 532 ± .005 534 ± .005 536 ± .005 538 ± .005 540 ± .005 542 ± .005 544 ± .005 546 ± .005 548 ± .005 550 ± .005 552 ± .005 554 ± .005 556 ± .005 558 ± .005 560 ± .005 562 ± .005 564 ± .005 566 ± .005 568 ± .005 570 ± .005 572 ± .005 574 ± .005 576 ± .005 578 ± .005 580 ± .005 582 ± .005 584 ± .005 586 ± .005 588 ± .005 590 ± .005 592 ± .005 594 ± .005 596 ± .005 598 ± .005 600 ± .005 602 ± .005 604 ± .005 606 ± .005 608 ± .005 610 ± .005 612 ± .005 614 ± .005 616 ± .005 618 ± .005 620 ± .005 622 ± .005 624 ± .005 626 ± .005 628 ± .005 630 ± .005 632 ± .005 634 ± .005 636 ± .005 638 ± .005 640 ± .005 642 ± .005 644 ± .005 646 ± .005 648 ± .005 650 ± .005 652 ± .005 654 ± .005 656 ± .005 658 ± .005 660 ± .005 662 ± .005 664 ± .005 666 ± .005 668 ± .005 670 ± .005 672 ± .005 674 ± .005 676 ± .005 678 ± .005 680 ± .005 682 ± .005 684 ± .005 686 ± .005 688 ± .005 690 ± .005 692 ± .005 694 ± .005 696 ± .005 698 ± .005 700 ± .005 702 ± .005 704 ± .005 706 ± .005 708 ± .005 710 ± .005 712 ± .005 714 ± .005 716 ± .005 718 ± .005 720 ± .005 722 ± .005 724 ± .005 726 ± .005 728 ± .005 730 ± .005 732 ± .005 734 ± .005 736 ± .005 738 ± .005 740 ± .005 742 ± .005 744 ± .005 746 ± .005 748 ± .005 750 ± .005 752 ± .005 754 ± .005 756 ± .005 758 ± .005 760 ± .005 762 ± .005 764 ± .005 766 ± .005 768 ± .005 770 ± .005 772 ± .005 774 ± .005 776 ± .005 778 ± .005 780 ± .005 782 ± .005 784 ± .005 786 ± .005 788 ± .005 790 ± .005 792 ± .005 794 ± .005 796 ± .005 798 ± .005 800 ± .005 802 ± .005 804 ± .005 806 ± .005 808 ± .005 810 ± .005 812 ± .005 814 ± .005 816 ± .005 818 ± .005 820 ± .005 822 ± .005 824 ± .005 826 ± .005 828 ± .005 830 ± .005 832 ± .005 834 ± .005 836 ± .005 838 ± .005 840 ± .005 842 ± .005 844 ± .005 846 ± .005 848 ± .005 850 ± .005 852 ± .005 854 ± .005 856 ± .005 858 ± .005 860 ± .005 862 ± .005 864 ± .005 866 ± .005 868 ± .005 870 ± .005 872 ± .005 874 ± .005 876 ± .005 878 ± .005 880 ± .005 882 ± .005 884 ± .005 886 ± .005 888 ± .005 890 ± .005 892 ± .005 894 ± .005 896 ± .005 898 ± .005 900 ± .005 902 ± .005 904 ± .005 906 ± .005 908 ± .005 910 ± .005 912 ± .005 914 ± .005 916 ± .005 918 ± .005 920 ± .005 922 ± .005 924 ± .005 926 ± .005 928 ± .005 930 ± .005 932 ± .005 934 ± .005 936 ± .005 938 ± .005 940 ± .005 942 ± .005 944 ± .005 946 ± .005 948 ± .005 950 ± .005 952 ± .005 954 ± .005 956 ± .005 958 ± .005 960 ± .005 962 ± .005 964 ± .005 966 ± .005 968 ± .005 970 ± .005 972 ± .005 974 ± .005 976 ± .005 978 ± .005 980 ± .005 982 ± .005 984 ± .005 986 ± .005 988 ± .005 990 ± .005 992 ± .005 994 ± .005 996 ± .005 998 ± .005 1000 ± .005 1002 ± .005 1004 ± .005 1006 ± .005 1008 ± .005 1010 ± .005 1012 ± .005 1014 ± .005 1016 ± .005 1018 ± .005 1020 ± .005 1022 ± .005 1024 ± .005 1026 ± .005 1028 ± .005 1030 ± .005 1032 ± .005 1034 ± .005 1036 ± .005 1038 ± .005 1040 ± .005 1042 ± .005 1044 ± .005 1046 ± .005 1048 ± .005 1050 ± .005 1052 ± .005 1054 ± .005 1056 ± .005 1058 ± .005 1060 ± .005 1062 ± .005 1064 ± .005 1066 ± .005 1068 ± .005 1070 ± .005 1072 ± .005 1074 ± .005 1076 ± .005 1078 ± .005 1080 ± .005 1082 ± .005 1084 ± .005 1086 ± .005 1088 ± .005 1090 ± .005 1092 ± .005 1094 ± .005 1096 ± .005 1098 ± .005 1100 ± .005 1102 ± .005 1104 ± .005 1106 ± .005 1108 ± .005 1110 ± .005 1112 ± .005 1114 ± .005 1116 ± .005 1118 ± .005 1120 ± .005 1122 ± .005 1124 ± .005 1126 ± .005 1128 ± .005 1130 ± .005 1132 ± .005 1134 ± .005 1136 ± .005 1138 ± .005 1140 ± .005 1142 ± .005 1144 ± .005 1146 ± .005 1148 ± .005 1150 ± .005 1152 ± .005 1154 ± .005 1156 ± .005 1158 ± .005 1160 ± .005 1162 ± .005 1164 ± .005 1166 ± .005 1168 ± .005 1170 ± .005 1172 ± .005 1174 ± .005 1176 ± .005 1178 ± .005 1180 ± .005 1182 ± .005 1184 ± .005 1186 ± .005 1188 ± .005 1190 ± .005 1192 ± .005 1194 ± .005 1196 ± .005 1198 ± .005 1200 ± .005 1202 ± .005 1204 ± .005 1206 ± .005 1208 ± .005 1210 ± .005 1212 ± .005 1214 ± .005 1216 ± .005 1218 ± .005 1220 ± .005 1222 ± .005 1224 ± .005 1226 ± .005 1228 ± .005 1230 ± .005 1232 ± .005 1234 ± .005 1236 ± .005 1238 ± .005 1240 ± .005 1242 ± .005 1244 ± .005 1246 ± .005 1248 ± .005 1250 ± .005 1252 ± .005 1254 ± .005 1256 ± .005 1258 ± .005 1260 ± .005 1262 ± .005 1264 ± .005 1266 ± .005 1268 ± .005 1270 ± .005 1272 ± .005 1274 ± .005 1276 ± .005 1278 ± .005 1280 ± .005 1282 ± .005 1284 ± .005 1286 ± .005 1288 ± .005 1290 ± .005 1292 ± .005 1294 ± .005 1296 ± .005 1298 ± .005 1300 ± .005 1302 ± .005 1304 ± .005 1306 ± .005 1308 ± .005 1310 ± .005 1312 ± .005 1314 ± .005 1316 ± .005 1318 ± .005 1320 ± .005 1322 ± .005 1324 ± .005 1326 ± .005 1328 ± .005 1330 ± .005 1332 ± .005 1334 ± .005 1336 ± .005 1338 ± .005 1340 ± .005 1342 ± .005 1344 ± .005 1346 ± .005 1348 ± .005 1350 ± .005 1352 ± .005 1354 ± .005 1356 ± .005 1358 ± .005 1360 ± .005 1362 ± .005 1364 ± .005 1366 ± .005 1368 ± .005 1370 ± .005 1372 ± .005 1374 ± .005 1376 ± .005 1378 ± .005 1380 ± .005 1382 ± .005 1384 ± .005 1386 ± .005 1388 ± .005 1390 ± .005 1392 ± .005 1394 ± .005 1396 ± .005 1398 ± .005 1400 ± .005 1402 ± .005 1404 ± .005 1406 ± .005 1408 ± .005 1410 ± .005 1412 ± .005 1414 ± .005 1416 ± .005 1418 ± .005 1420 ± .005 1422 ± .005 1424 ± .005 1426 ± .005 1428 ± .005 1430 ± .005 1432 ± .005 1434 ± .005 1436 ± .005 1438 ± .005 1440 ± .005 1442 ± .005 1444 ± .005 1446 ± .005 1448 ± .005 1450 ± .005 1452 ± .005 1454 ± .005 1456 ± .005 1458 ± .005 1460 ± .005 1462 ± .005 1464 ± .005 1466 ± .005 1468 ± .005 1470 ± .005 1472 ± .005 1474 ± .005 1476 ± .005 1478 ± .005 1480 ± .005 1482 ± .005 1484 ± .005 1486 ± .005 1488 ± .005 1490 ± .005 1492 ± .005 1494 ± .005 1496 ± .005 1498 ± .005 1500 ± .005 1502 ± .005 1504 ± .005 1506 ± .005 1508 ± .005 1510 ± .005 1512 ± .005 1514 ± .005 1516 ± .005 1518 ± .005 1520 ± .005 1522 ± .005 1524 ± .005 1526 ± .005 1528 ± .005 1530 ± .005 1532 ± .005 1534 ± .005 1536 ± .005 1538 ± .005 1540 ± .005 1542 ± .005 1544 ± .005 1546 ± .005 1548 ± .005 1550 ± .005 1552 ± .005 1554 ± .005 1556 ± .005 1558 ± .005 1560 ± .005 1562 ± .005 1564 ± .005 1566 ± .005 1568 ± .005 1570 ± .005 1572 ± .005 1574 ± .005 1576 ± .005 1578 ± .005 1580 ± .005 1582 ± .005 1584 ± .005 1586 ± .005 1588 ± .005 1590 ± .005 1592 ± .005 1594 ± .005 1596 ± .005 1598 ± .005 1600 ± .005 1602 ± .005 1604 ± .005 1606 ± .005 1608 ± .005 1610 ± .005 1612 ± .005 1614 ± .005 1616 ± .005 1618 ± .005 1620 ± .005 1622 ± .005 1624 ± .005 1626 ± .005 1628 ± .005 1630 ± .005 1632 ± .005 1634 ± .005 1636 ± .005 1638 ± .005 1640 ± .005 1642 ± .005 1644 ± .005 1646 ± .005 1648 ± .005 1650 ± .005 1652 ± .005 1654 ± .005 1656 ± .005 1658 ± .005 1660 ± .005 1662 ± .005 1664 ± .005 1666 ± .005 1668 ± .005 1670 ± .005 1672 ± .005 1674 ± .005 1676 ± .005 1678 ± .005 1680 ± .005 1682 ± .005 1684 ± .005 1686 ± .005 1688 ± .005 1690 ± .005 1692 ± .005 1694 ± .005 1696 ± .005 1698 ± .005 1700 ± .005 1702 ± .005 1704 ± .005 1706 ± .005 1708 ± .005 1710 ± .005 1712 ± .005 1714 ± .005 1716 ± .005 1718 ± .005 1720 ± .005 1722 ± .005 1724 ± .005 1726 ± .005 1728 ± .005 1730 ± .005 1732 ± .005 1734 ± .005 1736 ± .005 1738 ± .005 1740 ± .005 1742 ± .005 1744 ± .005 1746 ± .005 1748 ± .005 1750 ± .005 1752 ± .005 1754 ± .005 1756 ± .005 1758 ± .005 1760 ± .005 1762 ± .005 1764 ± .005 1766 ± .005 1768 ± .005 1770 ± .005 1772 ± .005 1774 ± .005 1776 ± .005 1778 ± .005 1780 ± .005 1782 ± .005 1784 ± .005 1786 ± .005 1788 ± .005 1790 ± .005 1792 ± .005 1794 ± .005 1796 ± .005 1798 ± .005 1800 ± .005 1802 ± .005 1804 ± .005 1806 ± .005 1808 ± .005 1810 ± .005 1812 ± .005 1814 ± .005 1816 ± .005 1818 ± .005 1820 ± .005 1822 ± .005 1824 ± .005 1826 ± .005 1828 ± .005 1830 ± .005 1832 ± .005 1834 ± .005 1836 ± .005 1838 ± .005 1840 ± .005 1842 ± .005 1844 ± .005 1846 ± .005 1848 ± .005 1850 ± .005 1852 ± .005 1854 ± .005 1856 ± .005 1858 ± .005 1860 ± .005 1862 ± .005 1864 ± .005 1866 ± .005 1868 ± .005 1870 ± .005 1872 ± .005 1874 ± .005 1876 ± .005 1878 ± .005 1880 ± .005 1882 ± .005 1884 ± .005 1886 ± .005 1888 ± .005 1890 ± .005 1892 ± .005 1894 ± .005 1896 ± .005 1898 ± .005 1900 ± .005 1902 ± .005 1904 ± .005 1906 ± .005 1908 ± .005 1910 ± .005 1912 ± .005 1914 ± .005 1916 ± .005 1918 ± .005 1920 ± .005 1922 ± .005 1924 ± .005 1926 ± .005 1928 ± .005 1930 ± .005 1932 ± .005 1934 ± .005 1936 ± .005 1938 ± .005 1940 ± .005 1942 ± .005 1944 ± .005 1946 ± .005 1948 ± .005 1950 ± .005 1952 ± .005 1954 ± .005 1956 ± .005 1958 ± .005 1960 ± .005 1962 ± .005 1964 ± .005 1966 ± .005 1968 ± .005 1970 ± .005 1972 ± .005 1974 ± .005 1976 ± .005 1978 ± .005 1980 ± .005 1982 ± .005 1984 ± .005 1986 ± .005 1988 ± .005 1990 ± .005 1992 ± .005 1994 ± .005 1996 ± .005 1998 ± .005 2000 ± .005 2002 ± .005 2004 ± .005 2006 ± .005 2008 ± .005 2010 ± .005 2012 ± .005 2014 ± .005 2016 ± .005 2018 ± .005 2020 ± .005 2022 ± .005 2024 ± .005 2026 ± .005 2028 ± .005 2030 ± .005 2032 ± .005 2034 ± .005 2036 ± .005 2038 ± .005 2040 ± .005 2042 ± .005 2044 ± .005 2046 ± .005 2048 ± .005 2050 ± .005 2052 ± .005 2054 ± .005 2056 ± .005 2058 ± .005 2060 ± .005 2062 ± .005 2064 ± .005 2066 ± .005 2068 ± .005 2070 ± .005 2072 ± .005



SECTION B-B
MOUNTING PLAN



NOZZLE SCHEDULE

MARK	QTY	SIZE	TYPE	RATING	NECK	SERVICE
N1	1	6	ANSI FLANGED	150	0.24 [6]	INLET
N2	1	6	ANSI FLANGED	150	0.24 [6]	OUTLET
N3	1	1/2	NPTI	3000#		INLET AUX CONN.
N4	1	1/2	NPTI	----	NA	OUTLET AUX CONN.
N5	1	1	NPTI	----	NA	VENT
N6	1	1	NPTI	----	NA	DRAIN

CUSTOMER INFO	
NAME	
P.O. NO.	
TAG NO.	
S.O. NO.	
PART NO.	F3AV060001BL304

REVISIONS				
REV	DESCRIPTION	BY	ECO	DATE
A	NEW RELEASE	M. LEVIS	0103940	12/10/2014
B	UPDATED DRAWING	FJM	0121687	4/4/2016
C	UPDATED PART NUMBER	FJM	0121829	4/7/2016

Quick & Discounted Pricing
[Click Here](#)
 Or Call 908.362.9981

NOTES:

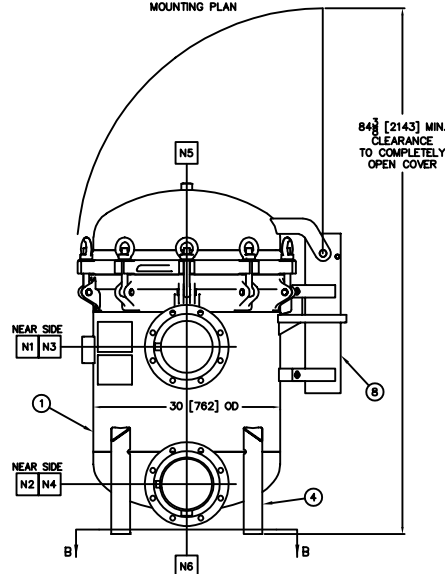
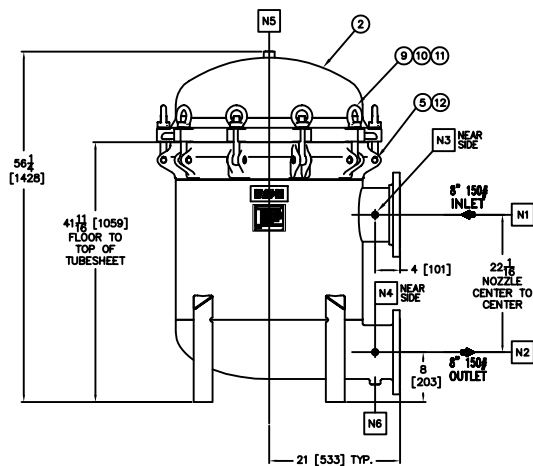
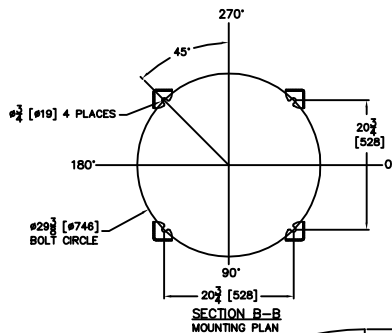
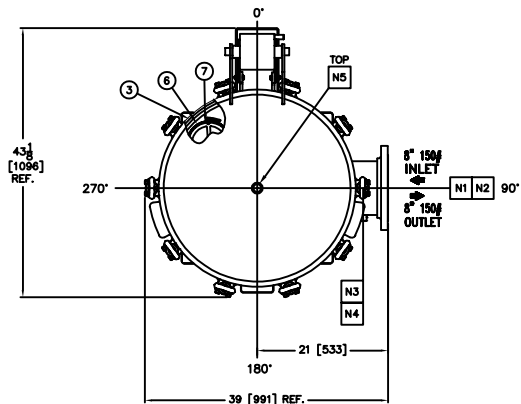
- DIMENSIONS SHOWN IN [] ARE IN MILLIMETERS AND FOR REFERENCE ONLY. ACCEPTANCE OF THIS PART WILL BE BASED ON "INCH" UNITS & TOLERANCES ONLY.
- INLET / OUTLET FLANGE CONNECTIONS PER ANSI B16.5 AND ALL BOLT HOLES ARE TO STRADDLE NATURAL CENTERLINES.
- UNITS ARE DESIGNED AND FABRICATED TO GOOD ENGINEERING PRACTICE.
- DESIGN DATA:
 DESIGN PRESSURE - 150 PSI [10 BAR]
 DESIGN TEMPERATURE - 200° F [93° C]
 MDMT - -20° F [-28.9° C] @ 150 PSI [10 BAR]
 CORROSION ALLOWANCE- NONE
 RADIOGRAPHY- NONE
 HYDROSTATIC TEST PRESSURE - 195 PSI [13.4 BAR]
- APPROX WEIGHT (DRY): 680 LBS [308 KG]
- APPROX SHIPPING WEIGHT: 734 LBS [332 KG]
- PART NO.: NAFTA - F3AV060001BL304
- VESSEL CODE : NAFTA - PMBF-0602-BB10-060A-NT-11HE-L
- UNIT ASSEMBLY DWG: ASU0000008
- SPARE PARTS FOR RE-ORDER.

ITEM	PART NAME	MATERIAL
12	CIRCLIP	STEEL ZINC PLATED
11	WASHER	STEEL ZINC PLATED
10	RING NUT	STEEL ZINC PLATED
9	EYE BOLT	A193 GR.B7 ZINC PLATED
8	SPRING ASSISTED MECHANISM	STAINLESS STEEL
7	FILTER BAG HOLD DOWN P/N L0000584-304	SS-304
6	RESTRAINER BASKET P/N L0003232	SS-304
5	PIN	A193 GR.B7 ZINC PLATED
4	LEGS	STAINLESS STEEL
3	O-RING P/N RPS0000085	BUNA-N
2	COVER	SS-304
1	BODY	SS-304

PART LIST FOR: F3AV060001BL304

DRAWN BY QUINTEL/ LEVIS SCALE AS DRAWN RESTRICTION RESTRICTED SHEET 1 OF 1 PROJECTION THIRD ANGLE		EATON HYDRAULICS GROUP FILTRATION DIVISION GALESBURG, MICHIGAN, USA • TINTON FALLS, NEW JERSEY, USA TITLE PROLINE 150 (PMBF-06) FILTER VESSEL TYPE HE 6" 150# RF FLG INLET/TANGENTIAL OUTLET LOOP STYLE SS-304 DATE 12/10/14 SIZE B DWG FILENAME F3AV060001BL304 REV C	
---	--	--	--

EATON CORPORATION - CONFIDENTIAL AND PROPRIETARY NOTICE TO PERSONS RECEIVING THIS DRAWING AND/OR TECHNICAL INFORMATION: THIS DOCUMENT, INCLUDING THE DRAWING AND INFORMATION CONTAINED THEREIN IS CONFIDENTIAL AND IS THE EXCLUSIVE PROPERTY OF EATON AT ANY TIME, BY VARIOUS THE POSSESSION OF THIS DOCUMENT THE RECIPIENT ACKNOWLEDGES AND AGREES THAT THIS DOCUMENT CANNOT BE USED IN ANY MANNER ADVERSE TO THE INTEREST OF EATON AND THAT NO PORTION OF THIS DRAWING MAY BE COPIED OR OTHERWISE REPRODUCED WITHOUT THE PRIOR WRITTEN CONSENT OF EATON, IN THE CASE OF CONFIDENTIAL CONTRACTUAL INFORMATION, THIS NOTICE SHALL GOVERN THE STATUS OF THIS DOCUMENT. ©2016 EATON CORPORATION - ALL RIGHTS RESERVED.



NOZZLE SCHEDULE

MARK	QTY	SIZE	TYPE	RATING	NECK	SERVICE
N1	1	8	ANSI FLANGED	150	.31 [9]	INLET
N2	1	8	ANSI FLANGED	150	.31 [9]	OUTLET
N3	1	1/2	NPTI	3000#	----	INLET AUX. CONN.
N4	1	1/2	NPTI	----	NA	OUTLET AUX. CONN.
N5	1	1	NPTI	----	NA	VENT
N6	1	1	NPTI	----	NA	DRAIN

CUSTOMER INFO	
NAME	
P.O. NO.	
TAG NO.	
S.O. NO.	
PART NO.	F3AV080001BL304

REVISIONS			
REV	DESCRIPTION	BY	DATE
A	NEW RELEASE	M. LEVIS	0105176 1/28/2015
B	UPDATED DRAWING	FJM	0121687 4/4/2016

Quick & Discounted Pricing
[Click Here](#)
 Or Call 908.362.9981

NOTES:

- DIMENSIONS SHOWN IN [] ARE IN MILLIMETERS AND FOR REFERENCE ONLY. ACCEPTANCE OF THIS PART WILL BE BASED ON "INCH" UNITS & TOLERANCES ONLY.
- INLET / OUTLET FLANGE CONNECTIONS PER ANSI B16.5 AND ALL BOLT HOLES ARE TO STRADDLE NATURAL CENTERLINES.
- UNITS ARE DESIGNED AND FABRICATED TO GOOD ENGINEERING PRACTICE.
- DESIGN DATA:
 DESIGN PRESSURE - 150 PSI [10 BAR]
 DESIGN TEMPERATURE - 200° F [93° C]
 MDMT - -20° F [-28.9° C] @ 150 PSI [10 BAR]
 CORROSION ALLOWANCE- NONE
 RADIOGRAPHY- NONE
 HYDROSTATIC TEST PRESSURE - 195 PSI [13.4 BAR]
- APPROX WEIGHT (DRY): 870 LBS [394 KG]
- APPROX SHIPPING WEIGHT: 939 LBS [426 KG]
- PART NO.: NAFTA - F3AV080001BL304
- VESSEL CODE : NAFTA - PMBF-0802-BB10-080A-NT-11HE-L
- UNIT ASSEMBLY DWG: ASU0000009
- SPARE PARTS FOR RE-ORDER.

ITEM	PART NAME	MATERIAL
12	CIRCLIP	STEEL ZINC PLATED
11	WASHER	STEEL ZINC PLATED
10	RING NUT	STEEL ZINC PLATED
9	EYE BOLT	A193 GR.B7 ZINC PLATED
8	SPRING ASSISTED MECHANISM	STAINLESS STEEL
7	FILTER BAG HOLD DOWN P/N L0000584-304	SS-304
6	RESTRAINER BASKET P/N L0003232	SS-304
5	PIN	A193 GR.B7 ZINC PLATED
4	LEGS	STAINLESS STEEL
3	O-RING P/N RPS0000068	BUNA-N
2	COVER	SS-304
1	BODY	SS-304

PART LIST FOR: F3AV080001BL304

DRAWN BY QUINTEL/ LEVIS		HYDRAULICS GROUP FILTRATION DIVISION GALESBURG, MICHIGAN, USA • TINTON FALLS, NEW JERSEY, USA	
SCALE AS DRAWN		TITLE PROLINE 150 (PMBF-08) FILTER VESSEL TYPE HE 8" 150# RF FLG INLET/TANGENTIAL OUTLET LOOP STYLE SS-304	
RESTRICTION RESTRICTED		DATE 01/28/15	
SHEET 1 OF 1		SIZE B	
PROJECTION THIRD ANGLE		DWG FILENAME F3AV080001BL304	
		REV B	