

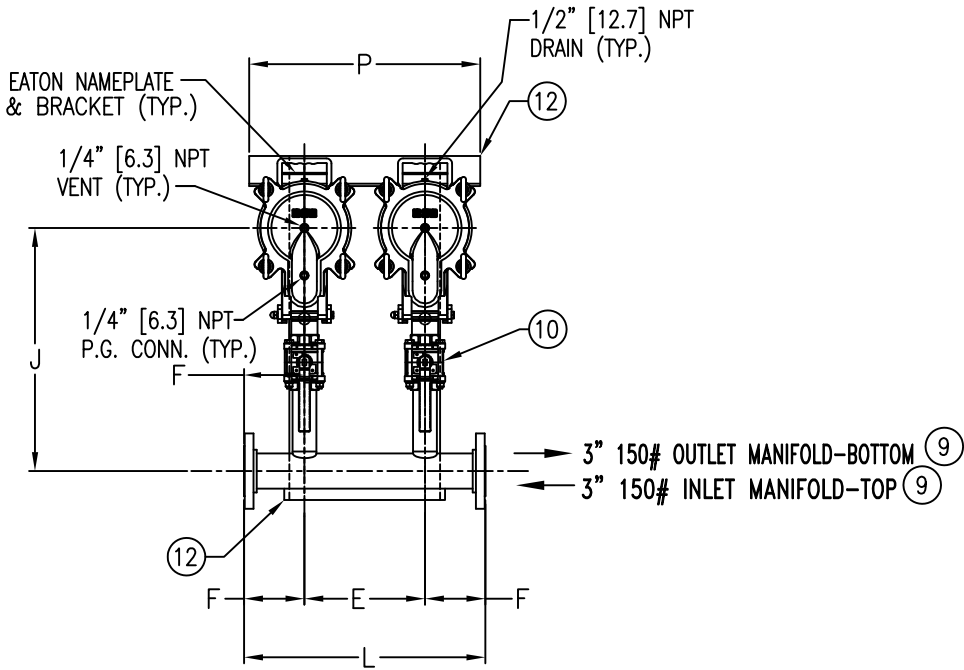
ITEM NUMBER	BAG SIZE	A IN. / MM	B IN. / MM	C IN. / MM	D IN. / MM	E IN. / MM	F IN. / MM	G IN. / MM	H IN. / MM	J IN. / MM	K IN. / MM	L IN. / MM	M IN. / MM	N IN. / MM	P IN. / MM	Q IN. / MM	R IN. / MM	S IN. / MM	WEIGHT LBS / KGS
F3AVTB0402	O2	8-5/8 / 219	41-3/4 /1060	47-1/2 / 1207	73-1/2 / 1867	12 / 305	6 / 152.4	34 / 864	7-3/4 / 197	24-3/16 / 614	7-1/2 / 190.5	24 / 609.6	16 / 406	4 / 101.6	23 / 584	4 / 101.6	34-1/4 / 870	28-1/4 / 718	330 / 150

R E V I S I O N S				
REV	DESCRIPTION	BY	ECO	DATE
A	NEW ISSUE	FJM	0030160	06/21/10
B	UPDATED DRAWING	FJM	0107180	02/03/15

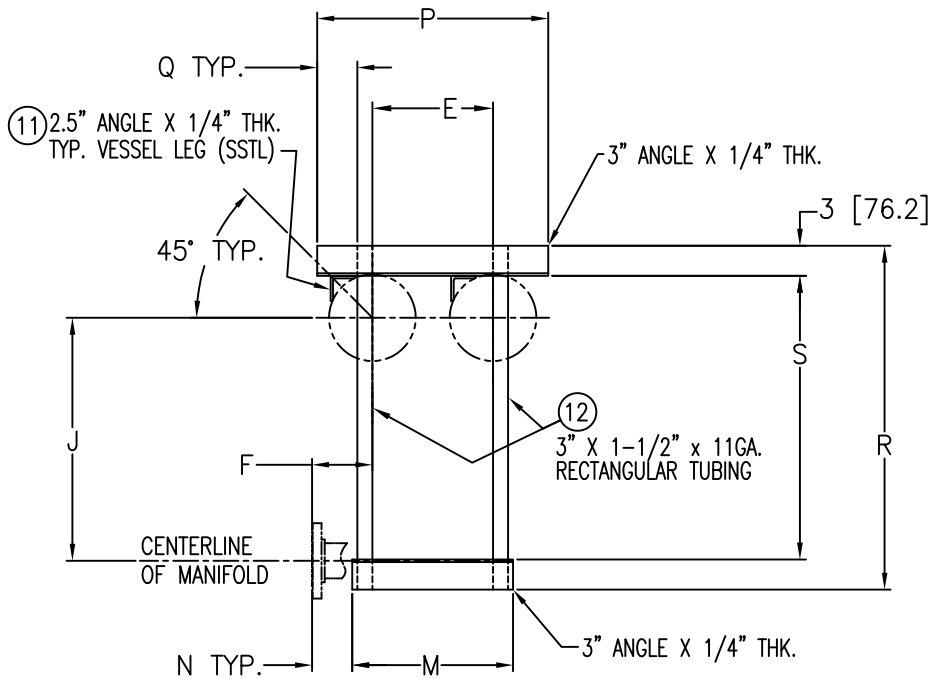
Quick & Discounted Pricing

[Click Here](#)

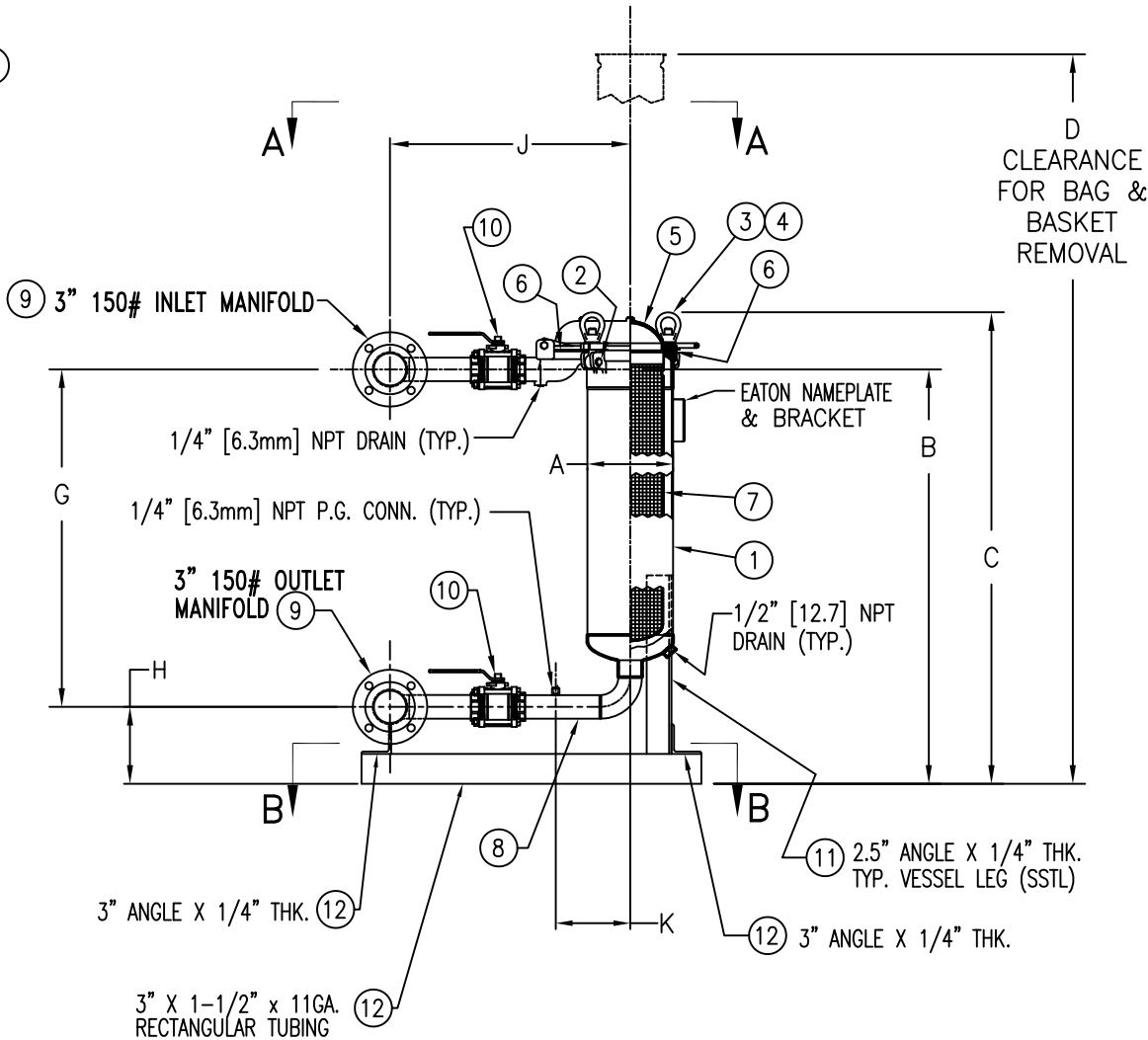
Or Call 908.362.9981



VIEW A-A



VIEW B-B
SKID DETAIL

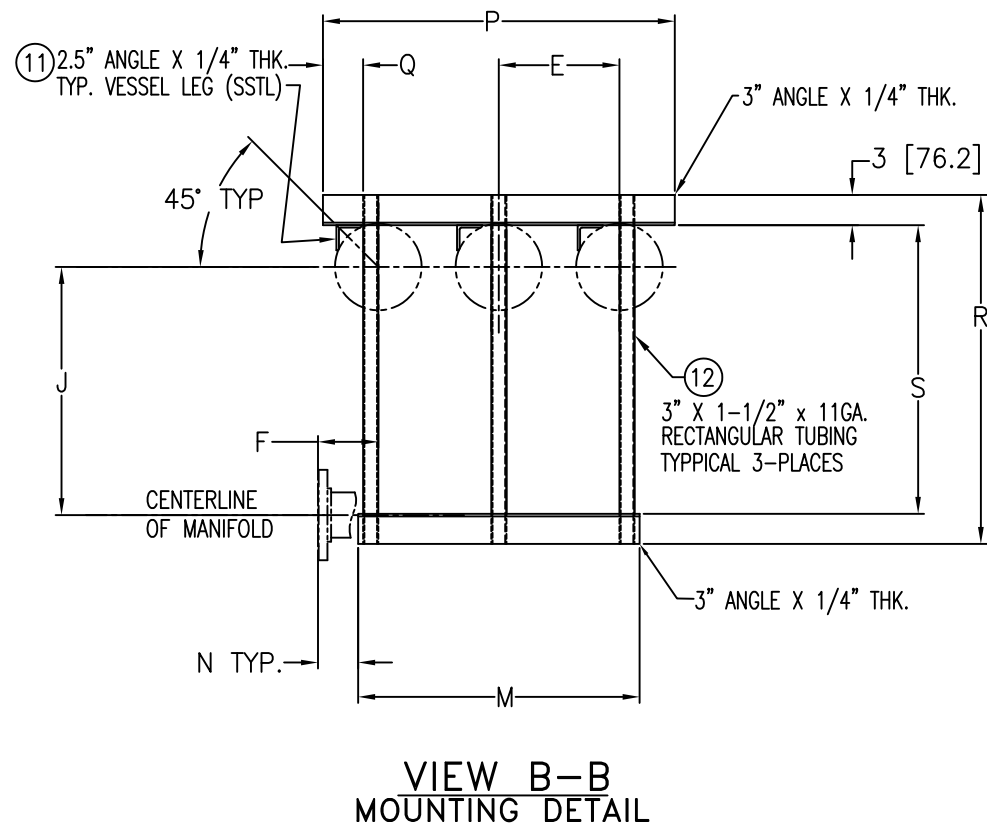
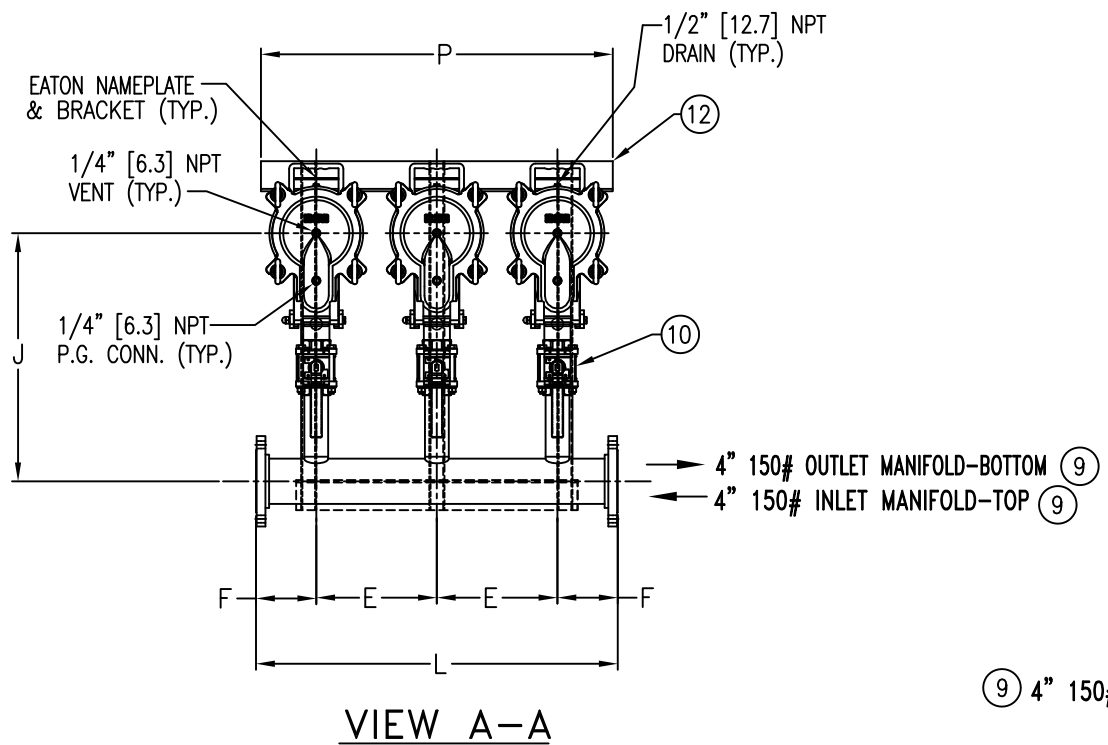


NO.	PART NAME	MATERIAL
1	BODY	SA-351 CF8M SA-312 TP 316
2	PIN	SA-193 GR B7, ZINC PL
3	EYE BOLT	SA-193 GR B7, ZINC PL
4	EYE NUT	SA-194 GR 2H, ZINC PL
5	COVER	SA-351 CF8M
6	O-RINGS (2) (1) 811333 SMALL (1) L0000024 LARGE	BUNA-N
7	RESTRAINER BASKET P/N L0001753	316 STAINLESS STEEL
8	2" ELBOW ASSEMBLY	316 STAINLESS STEEL
9	3" 150# MANIFOLDS	316 STAINLESS STEEL
10	2" 150# BALL VALVE	SEE NOTE 6
11	VESSEL ANGLE LEG SUPPORT	STAINLESS STEEL
12	SKID ASSEMBLY	STAINLESS STEEL

- NOTES:
1. VESSEL DESIGNED, CONSTRUCTED, & "UM" STAMPED IN ACCORDANCE WITH ASME SECT. VIII, DIV. 1 LATEST EDITION AND ADDENDA.
 2. MANIFOLD INLET/OUTLET FLANGED CONNECTIONS PER ANSI B16.5
 3. MAWP: 150 PSI @ 250° F MDMT: -20° F @ 150 PSI
(10.3 BAR @ 121.1° C) (-28.9° C @ 10.3 BAR)
 4. INTER-CONNECTING VALVE HARDWARE WILL BE SUPPLIED.
 5. DIMENSIONS SHOWN IN [] ARE IN MILLIMETERS AND FOR REFERENCE ONLY. ACCEPTANCE OF THIS PART WILL BE BASED ON "INCH" UNITS & TOLERANCES ONLY.
 6. 2" SOCKET WELD BALL VALVES STAINLESS STEEL EATON STANDARD P/N RPV0000018 & RPV0000019 FULL PORT 3 PIECE.

C U S T O M E R I N F O		T O L E R A N C E S (UNLESS OTHERWISE SPECIFIED)	DRAWN BY FJM	HYDRAULICS GROUP F I L T R A T I O N D I V I S I O N GALESBURG, MICHIGAN, USA • TINTON FALLS, NEW JERSEY, USA			
NAME		DECIMAL: .X ± .030 .XX ± .010 .XXX ± .005	SCALE AS DRAWN	TITLE MODULINE TOPLINE (MTBF-0202) FILTER VESSEL 3"-150# IN/OUT FLANGE MANIFOLD MATERIAL SS-316 W/BALL VALVES			
P.O. NO.		FRACTIONAL: NOZZLE Ø TO FLOOR: $\frac{1}{8}" < 4' > \frac{1}{4}"$ FACE TO FACE: $\frac{1}{8}" < 4' > \frac{1}{4}"$ ANGULAR: FLANGES (H/V): $\pm \frac{1}{2}"$ VESSEL OVERALL HT: 1"	RESTRICTION RESTRICTED				
S.O. NO.		BOLT HOLES MUST STRADDLE Ø MACHINED PARTS TO BE FREE OF BURRS FOR ADDITIONAL TOLERANCE DETAILS REF. ES-211, ES-222 AND ES-223	SHEET 1 OF 1				
QUANTITY		REVIEWED FOR CLASSIFICATION PER PR-4	PROJECTION THIRD ANGLE	DATE 04/27/09	SIZE B	DWG FILENAME MTBF02XS	REV B
PART NO.	F3AVTB0402	CRITICAL SIGNIFICANT	EATON CORPORATION - CONFIDENTIAL AND PROPRIETARY NOTICE TO PERSONS RECEIVING THIS DRAWING AND/OR TECHNICAL INFORMATION THIS DOCUMENT, INCLUDING THE DRAWING AND INFORMATION CONTAINED THEREIN IS CONFIDENTIAL AND IS THE EXCLUSIVE PROPERTY OF EATON AT ANY TIME. BY TAKING THE POSSESSION OF THIS DOCUMENT THE RECIPIENT ACKNOWLEDGES AND AGREES THAT THIS DOCUMENT CANNOT BE USED IN ANY MANNER ADVERSE TO THE INTEREST OF EATON AND THAT NO PORTION OF THIS DRAWING MAY BE COPIED OR OTHERWISE REPRODUCED WITHOUT THE PRIOR WRITTEN CONSENT OF EATON, IN THE CASE OF CONFLICTION CONTRACTUAL PROVISIONS, THIS NOTICE SHALL GOVERN THE STATUS OF THIS DOCUMENT. 2014 EATON CORPORATION - ALL RIGHTS RESERVED.				

ITEM NUMBER	BAG SIZE	A IN. / MM	B IN. / MM	C IN. / MM	D IN. / MM	E IN. / MM	F IN. / MM	G IN. / MM	H IN. / MM	J IN. / MM	K IN. / MM	L IN. / MM	M IN. / MM	N IN. / MM	P IN. / MM	Q IN. / MM	R IN. / MM	S IN. / MM	WEIGHT LBS / KGS
F3AVTBO403	O2	8-5/8 / 219	42-1/4 / 1073	48 / 1219.2	74 / 1880	12 / 305	6 / 152.4	34 / 864	8-1/4 / 210.6	24-11/16 / 627	7-1/2 / 190.5	36 / 914.4	28 / 711	4 / 101.6	35 / 889	4 / 101.6	34-3/4 / 882	28-3/4 / 730	500 / 226.8








Quick & Discounted Pricing
Click Here
Or Call 908.362.9981

R E V I S I O N S				
REV	DESCRIPTION	BY	ECO	DATE
A	NEW ISSUE	FJM	0030160	06/21/10
B	REVISED FROM 6" TO 4"	FJM	0089225	09/05/13
C	UPDATED DRAWING	FJM	0107180	02/03/15

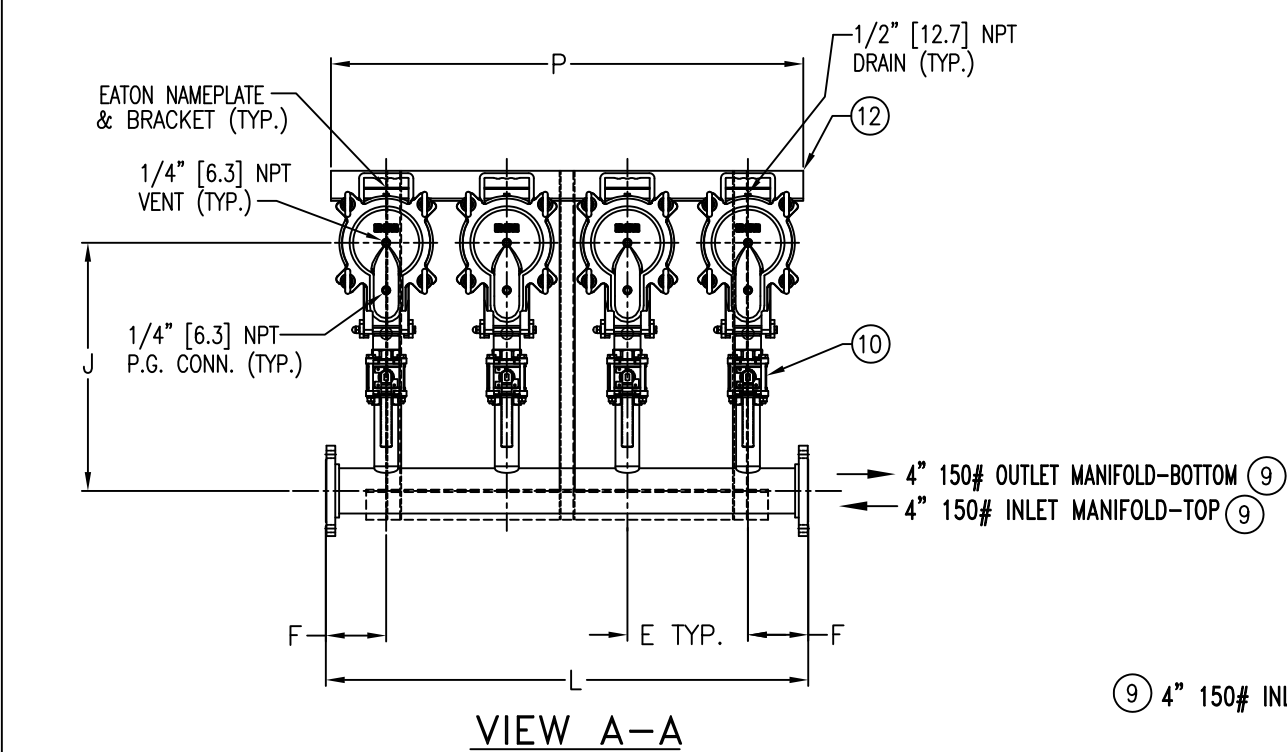
NO.	PART NAME	MATERIAL
1	BODY	SA-351 CF8M SA-312 TP 316
2	PIN	SA-193 GR B7, ZINC PL
3	EYE BOLT	SA-193 GR B7, ZINC PL
4	EYE NUT	SA-194 GR 2H, ZINC PL
5	COVER	SA-351 CF8M
6	0-RINGS (2) (1) 811333 SMALL (1) L0000024 LARGE	BUNA-N
7	RESTRAINER BASKET P/N L0001753	316 STAINLESS STEEL
8	2" ELBOW ASSEMBLY	316 STAINLESS STEEL
9	4" 150# MANIFOLDS	316 STAINLESS STEEL
10	2" 150# BALL VALVE	SEE NOTE 6
11	VESSEL ANGLE LEG SUPPORT	STAINLESS STEEL
12	SKID ASSEMBLY	STAINLESS STEEL

NOTES:

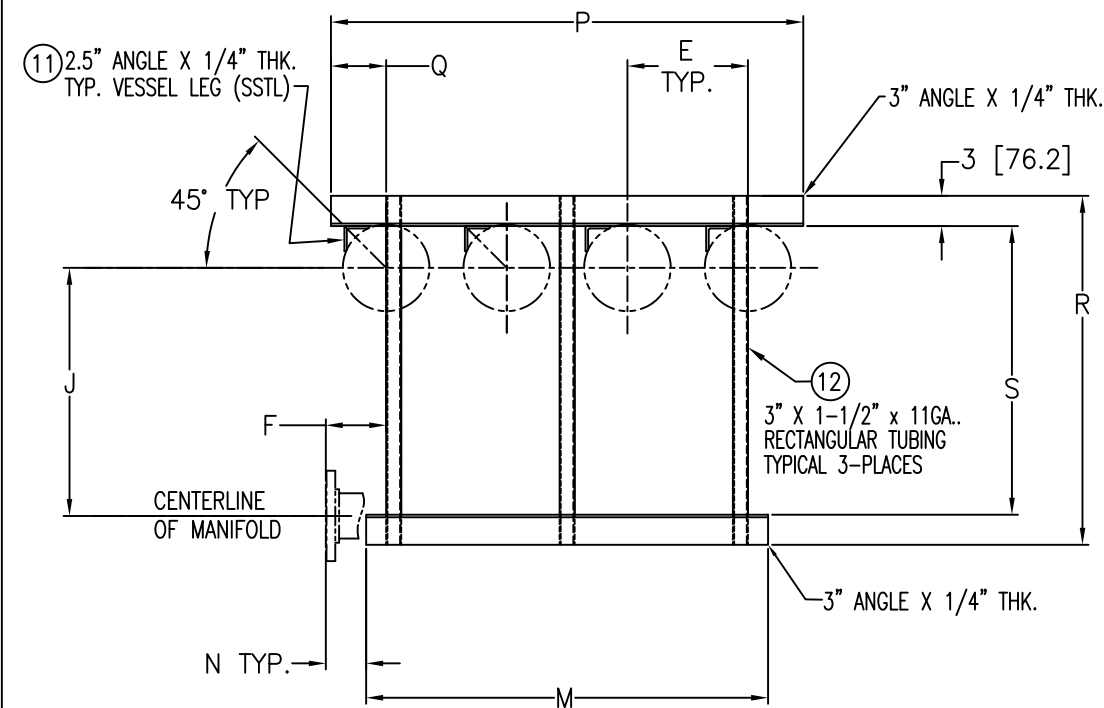
1. VESSEL DESIGNED, CONSTRUCTED, & "UM" STAMPED IN ACCORDANCE WITH ASME SECT. VIII, DIV. 1 LATEST EDITION AND ADDENDA.
2. MANIFOLD INLET/OUTLET FLANGED CONNECTIONS PER ANSI B16.5
3. MAWP: 150 PSI @ 250° F MDMT: -20° F @ 150 PSI
(10.3 BAR @ 121.1° C) (-28.9° C @ 10.3 BAR)
4. INTER-CONNECTING VALVE HARDWARE WILL BE SUPPLIED.
5. DIMENSIONS SHOWN IN [] ARE IN MILLIMETERS AND FOR REFERENCE ONLY. ACCEPTANCE OF THIS PART WILL BE BASED ON "INCH" UNITS & TOLERANCES ONLY.
6. 2" SOCKET WELD BALL VALVES STAINLESS STEEL EATON STANDARD P/N RPV0000018 & RPV0000019 FULL PORT 3 PIECE.

C U S T O M E R I N F O		T O L E R A N C E S (UNLESS OTHERWISE SPECIFIED)		DRAWN BY FJM		 HYDRAULICS GROUP FILTRATION DIVISION GALESBURG, MICHIGAN, USA • TINTON FALLS, NEW JERSEY, USA						
NAME		DECIMAL:	.X ± .030 .XX ± .010 .XXX ± .005	SCALE	AS DRAWN	 TITLE MODULINE TOPLINE (MTBF-0302) FILTER VESSEL 4"—150# IN/OUT FLANGE MANIFOLD MATERIAL SS-316 W/BALL VALVES		DATE 04/27/09		SIZE	DWG FILENAME	REV
P.O. NO.		FRACTIONAL:	± 1/16 NOZZLE Ø TO FLOOR: 1/8" < 4' > 1/4" FACE TO FACE: 1/8" < 4' > 1/4" ANGULAR:	RESTRICTION	RESTRICTED					B	MTBF03XS	C
S.O. NO.		± 1° FLANGES (H/V): VESSEL OVERALL HT:	± 1/2 1"	SHEET	1 OF 1							
QUANTITY		BOLT HOLES MUST STRADDLE Ø MACHINED PARTS TO BE FREE OF BURRS FOR ADDITIONAL TOLERANCE DETAILS REF. ES-211, ES-222 AND ES-223		PROJECTION	 THIRD ANGLE	EATON CORPORATION – CONFIDENTIAL AND PROPRIETARY NOTICE TO PERSONS RECEIVING THIS DRAWING AND/OR TECHNICAL INFORMATION: THIS DOCUMENT, INCLUDING THE DRAWING AND INFORMATION CONTAINED HEREON IS THE EXCLUSIVE PROPERTY OF EATON AT ANY TIME. BY TAKING THE POSSESSION OF THIS DOCUMENT THE RECIPIENT ACKNOWLEDGES AND AGREES THAT THIS DOCUMENT CANNOT BE USED IN ANY MANNER ADVERSE TO THE INTEREST OF EATON AND THAT NO PORTION OF THIS DRAWING MAY BE COPIED OR OTHERWISE REPRODUCED WITHOUT THE PRIOR WRITTEN CONSENT OF EATON, IN THE CASE OF CONFLICTION CONTRACTUAL PROVISIONS, THIS NOTICE SHALL GOVERN THE STATUS OF THIS DOCUMENT. 2014 EATON CORPORATION – ALL RIGHTS RESERVED.						
PART NO.	F3AVTB0403	REVIEWED FOR CLASSIFICATION PER PR-4  CRITICAL  SIGNIFICANT										

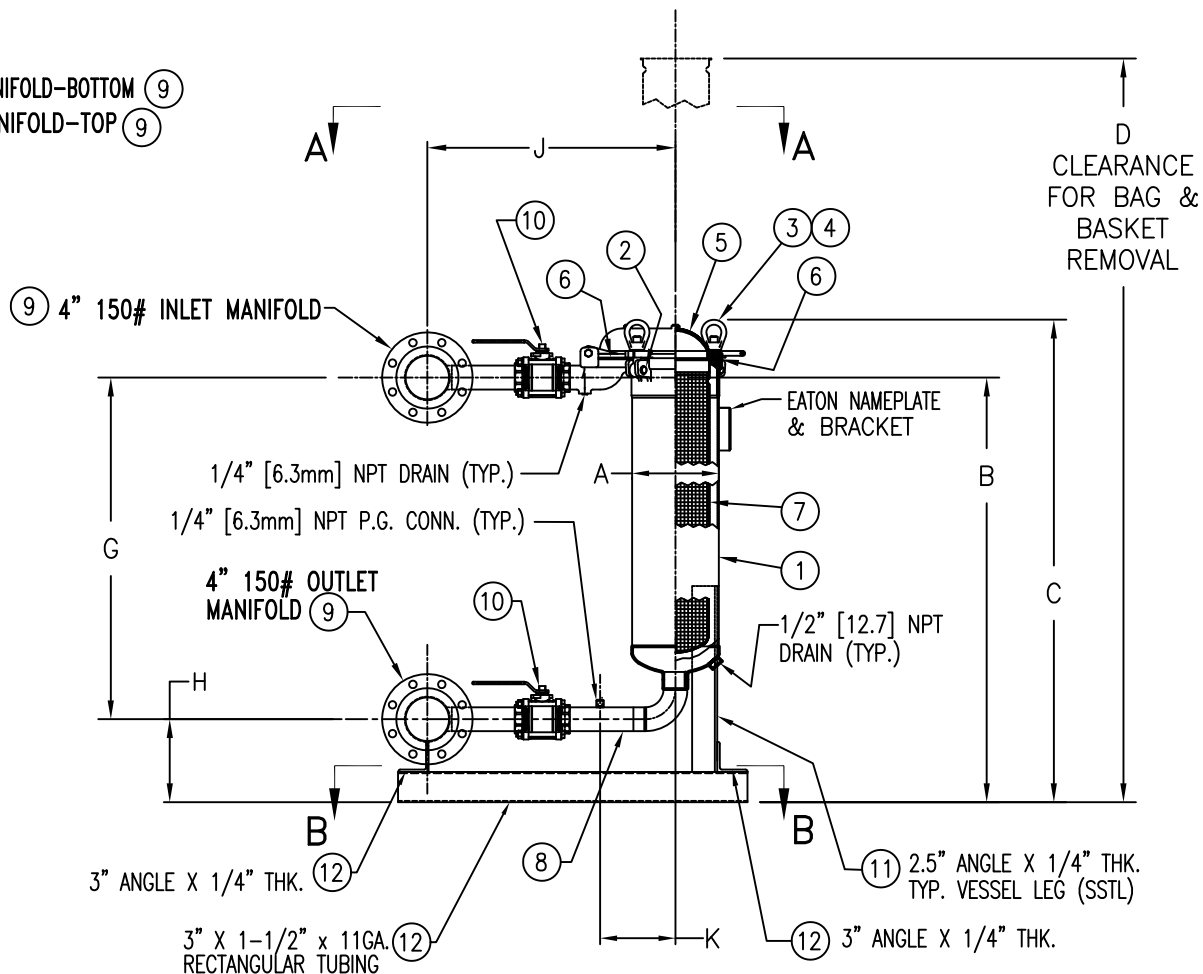
ITEM NUMBER	BAG SIZE	A IN. / MM	B IN. / MM	C IN. / MM	D IN. / MM	E IN. / MM	F IN. / MM	G IN. / MM	H IN. / MM	J IN. / MM	K IN. / MM	L IN. / MM	M IN. / MM	N IN. / MM	P IN. / MM	Q IN. / MM	R IN. / MM	S IN. / MM	WEIGHT LBS / KGS
F3AVTB0404	02	8-5/8 / 219	42-1/4 / 1073	48 / 1219.2	74 / 1879.6	12 / 305	6 / 152.4	34 / 864	8-1/4 / 2.9.6	24-11/16 / 627	7-1/2 / 190.5	48 / 1219	40 / 1016	4 / 101.6	47 / 1194	5-1/2 / 140	34-3/4 / 882	28-3/4 730	630 / 285



VIEW A-A



VIEW B-B
MOUNTING DETAIL



Quick & Discounted Pricing
Click Here
Or Call 908.362.9981

R E V I S I O N S				
REV	DESCRIPTION	BY	ECO	DATE
A	NEW ISSUE	FJM	0030160	06/21/10
B	REVISED FROM 6" TO 4"	FJM	0089225	09/05/13
C	UPDATED DRAWING	FJM	0107180	02/03/15

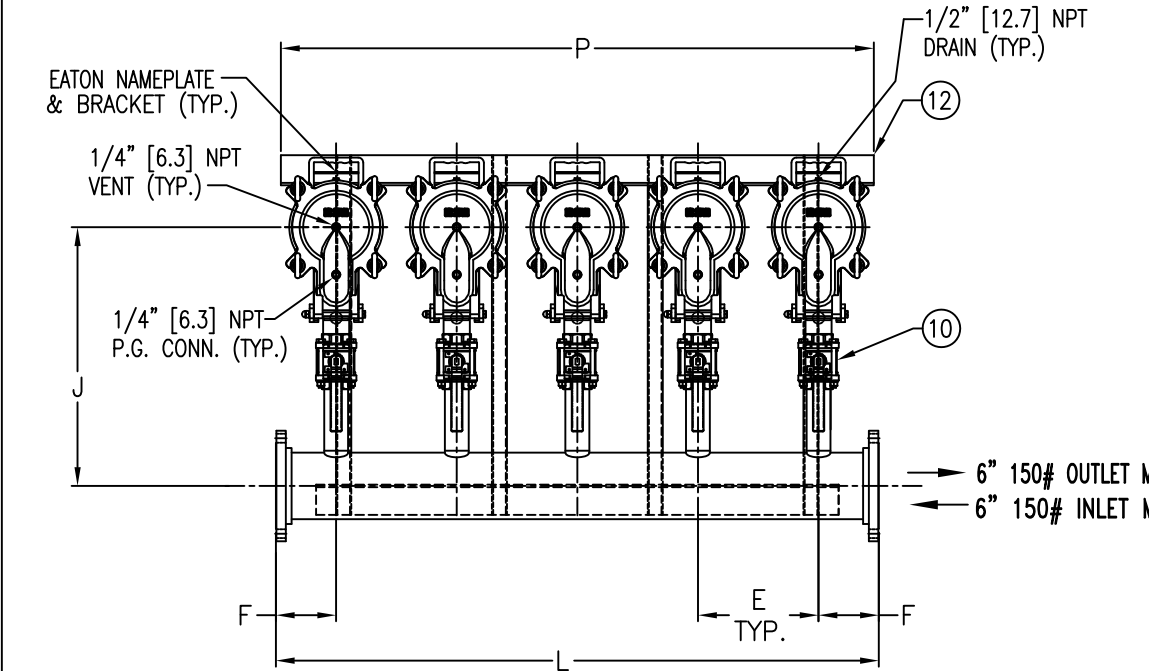
NO.	PART NAME	MATERIAL
1	BODY	SA-351 CF8M SA-312 TP 316
2	PIN	SA-193 GR B7, ZINC PL
3	EYE BOLT	SA-193 GR B7, ZINC PL
4	EYE NUT	SA-194 GR 2H, ZINC PL
5	COVER	SA-351 CF8M
6	O-RINGS (2) (1) 811333 SMALL (1) L000024 LARGE	BUNA-N
7	RESTRAINER BASKET P/N L0001753	316 STAINLESS STEEL
8	2" ELBOW ASSEMBLY	316 STAINLESS STEEL
9	4" 150# MANIFOLDS	316 STAINLESS STEEL
10	2" 150# BALL VALVE	SEE NOTE 6
11	VESSEL ANGLE LEG SUPPORT	STAINLESS STEEL
12	SKID ASSEMBLY	STAINLESS STEEL

NOTES:

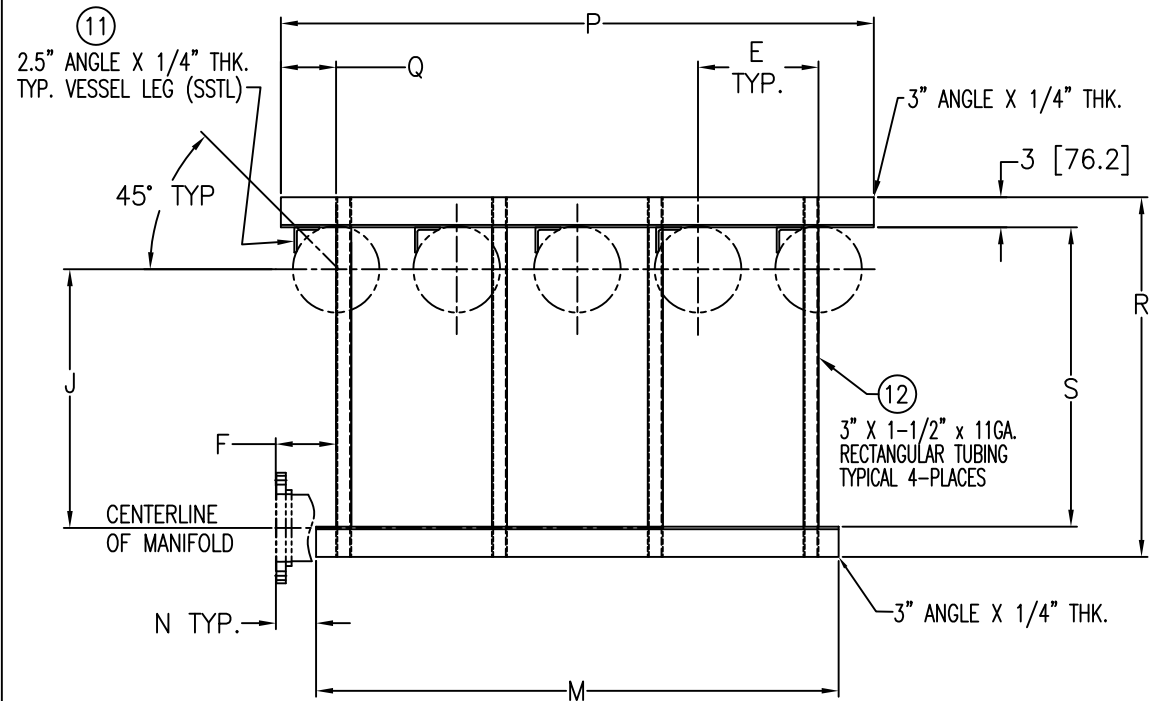
1. VESSEL DESIGNED, CONSTRUCTED, & "UM" STAMPED IN ACCORDANCE WITH ASME SECT. VIII, DIV. 1 LATEST EDITION AND ADDENDA.
2. MANIFOLD INLET/OUTLET FLANGED CONNECTIONS PER ANSI B16.5
3. MAWP: 150 PSI @ 250° F MDMT: -20° F @ 150 PSI
(10.3 BAR @ 121.1° C) (-28.9° C @ 10.3 BAR)
4. INTER-CONNECTING VALVE HARDWARE WILL BE SUPPLIED.
5. DIMENSIONS SHOWN IN [] ARE IN MILLIMETERS AND FOR REFERENCE ONLY. ACCEPTANCE OF THIS PART WILL BE BASED ON "INCH" UNITS & TOLERANCES ONLY.
6. 2" SOCKET WELD BALL VALVES STAINLESS STEEL EATON STANDARD P/N RPV0000018 & RPV0000019 FULL PORT 3 PIECE.

C U S T O M E R I N F O		T O L E R A N C E S (UNLESS OTHERWISE SPECIFIED)		DRAWN BY FJM		HYDRAULICS GROUP F I L T R A T I O N D I V I S I O N GALESBURG, MICHIGAN, USA • TINTON FALLS, NEW JERSEY, USA			
NAME		DECIMAL:	.X ± .030 .XX ± .010 .XXX ± .005	SCALE AS DRAWN		TITLE MODULINE TOPLINE (MTBF-0402) FILTER VESSEL 4"-150# IN/OUT FLANGE MANIFOLD MATERIAL SS-316 W/BALL VALVES			
P.O. NO.		FRACTIONAL:	± 1/16 NOZZLE Ø TO FLOOR: 1/8" < 4' > 1/4" FACE TO FACE: 1/8" < 4' > 1/4" ANGULAR: ± 1°	RESTRICTION RESTRICTED					
S.O. NO.		FLANGES (H/V):	± 1/2°	SHEET 1 OF 1					
QUANTITY		VESSEL OVERALL HT:	1"	PROJECTION THIRD ANGLE		DATE 04/27/09	SIZE B	DWG FILENAME MTBF04XS	REV C
PART NO.	F3AVTB0404	BOLT HOLES MUST STRADDLE Ø MACHINED PARTS TO BE FREE OF BURRS FOR ADDITIONAL TOLERANCE DETAILS REF. ES-211, ES-222 AND ES-223 REVIEWED FOR CLASSIFICATION PER PR-4		EATON CORPORATION - CONFIDENTIAL AND PROPRIETARY NOTICE TO PERSONS RECEIVING THIS DRAWING AND/OR TECHNICAL INFORMATION THIS DOCUMENT, INCLUDING THE DRAWING AND INFORMATION CONTAINED THEREIN IS CONFIDENTIAL AND IS THE EXCLUSIVE PROPERTY OF EATON AT ANY TIME. BY TAKING THE POSSESSION OF THIS DOCUMENT THE RECIPIENT ACKNOWLEDGES AND AGREES THAT THIS DOCUMENT CANNOT BE USED IN ANY MANNER ADVERSE TO THE INTEREST OF EATON AND THAT NO PORTION OF THIS DRAWING MAY BE COPIED OR OTHERWISE REPRODUCED WITHOUT THE PRIOR WRITTEN CONSENT OF EATON, IN THE CASE OF CONFLICTION CONTRACTUAL PROVISIONS, THIS NOTICE SHALL GOVERN THE STATUS OF THIS DOCUMENT. 2014 EATON CORPORATION - ALL RIGHTS RESERVED.					
		CRITICAL		SIGNIFICANT					

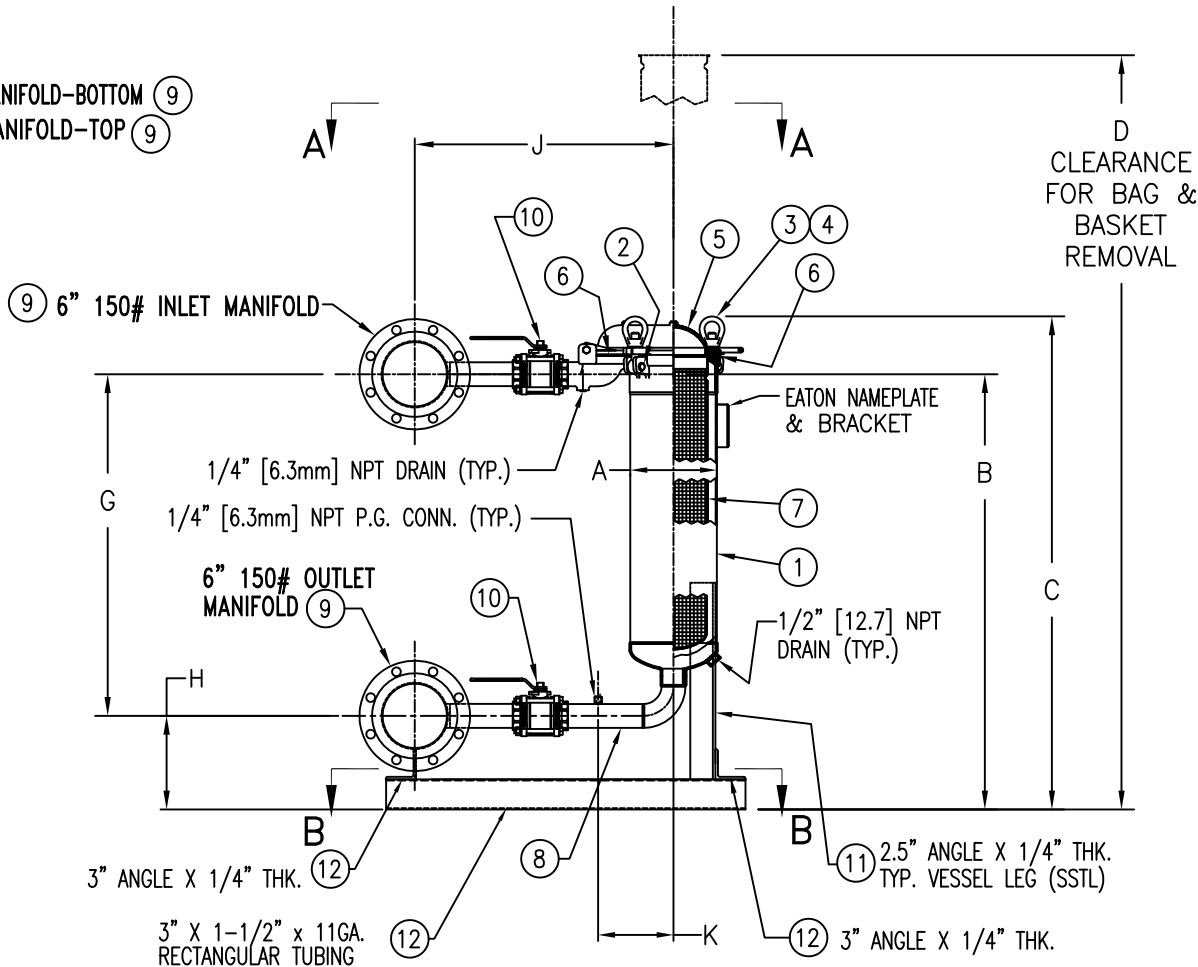
ITEM NUMBER	BAG SIZE	A IN. / MM	B IN. / MM	C IN. / MM	D IN. / MM	E IN. / MM	F IN. / MM	G IN. / MM	H IN. / MM	J IN. / MM	K IN. / MM	L IN. / MM	M IN. / MM	N IN. / MM	P IN. / MM	Q IN. / MM	R IN. / MM	S IN. / MM	WEIGHT LBS / KGS
F3AVTB0405	O2	8-5/8 / 219	43-5/16 / 1100	49-1/16 / 1246.1	75 / 1906.5	12 / 305	6 / 152.4	34 / 864	9-5/16 / 236.5	25-3/4 / 654	7-1/2 / 190.5	60 / 1524	52 / 1321	4 / 101.6	59 / 1498	5-1/2 / 139.7	35-3/4 / 908	29-3/4 756	800 / 363



VIEW A-A



VIEW B-B
MOUNTING DETAIL



Quick & Discounted Pricing
[Click Here](#)
Or Call 908.362.9981

R E V I S I O N S				
REV	DESCRIPTION	BY	ECO	DATE
A	NEW ISSUE	FJM	0030160	06/21/10
B	UPDATED DRAWING	FJM	0107180	02/03/15

NO.	PART NAME	MATERIAL
1	BODY	SA-351 CF8M SA-312 TP 316
2	PIN	SA-193 GR B7, ZINC PL
3	EYE BOLT	SA-193 GR B7, ZINC PL
4	EYE NUT	SA-194 GR 2H, ZINC PL
5	COVER	SA-351 CF8M
6	O-RINGS (2) (1) 811333 SMALL (1) L0000024 LARGE	BUNA-N
7	RESTRAINER BASKET P/N L0001753	316 STAINLESS STEEL
8	2" ELBOW ASSEMBLY	316 STAINLESS STEEL
9	6" 150# MANIFOLDS	316 STAINLESS STEEL
10	2" 150# BALL VALVE	SEE NOTE 6
11	VESSEL ANGLE LEG SUPPORT	STAINLESS STEEL
12	SKID ASSEMBLY	STAINLESS STEEL

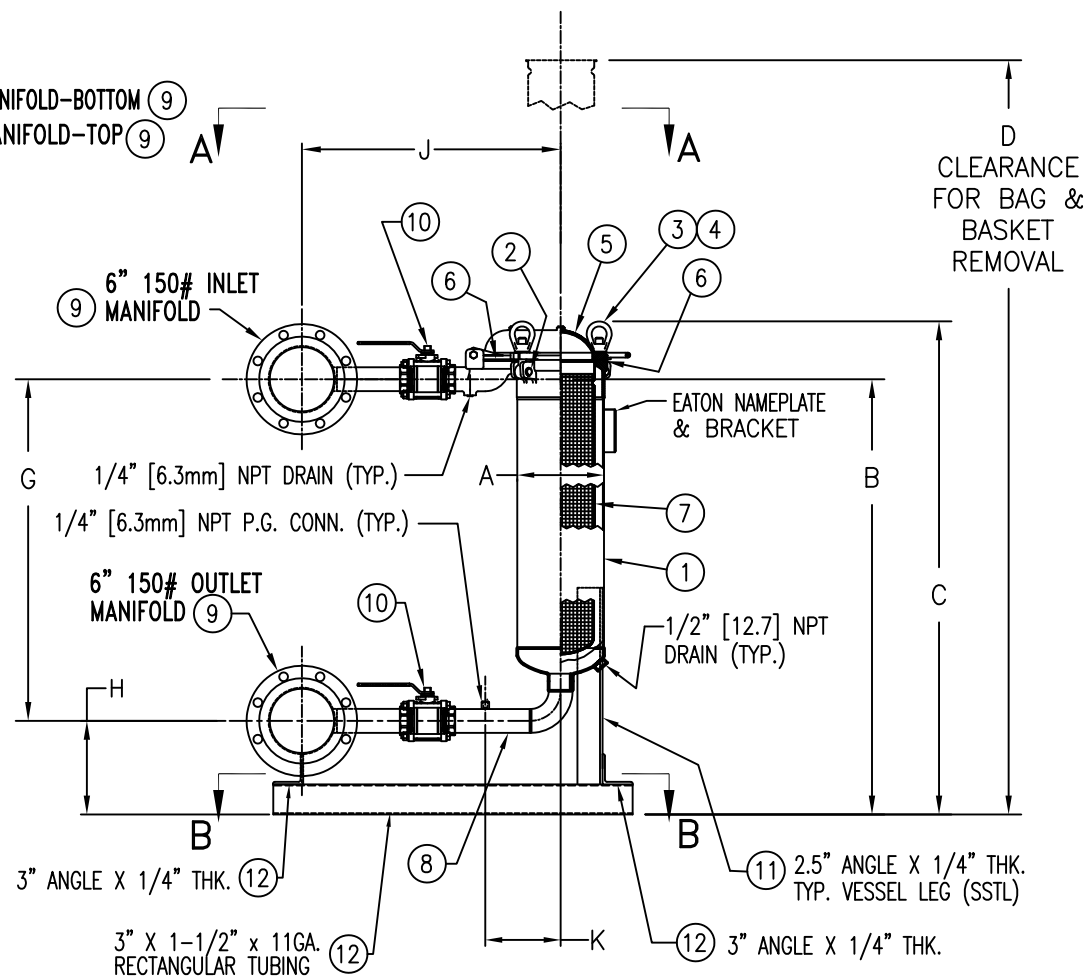
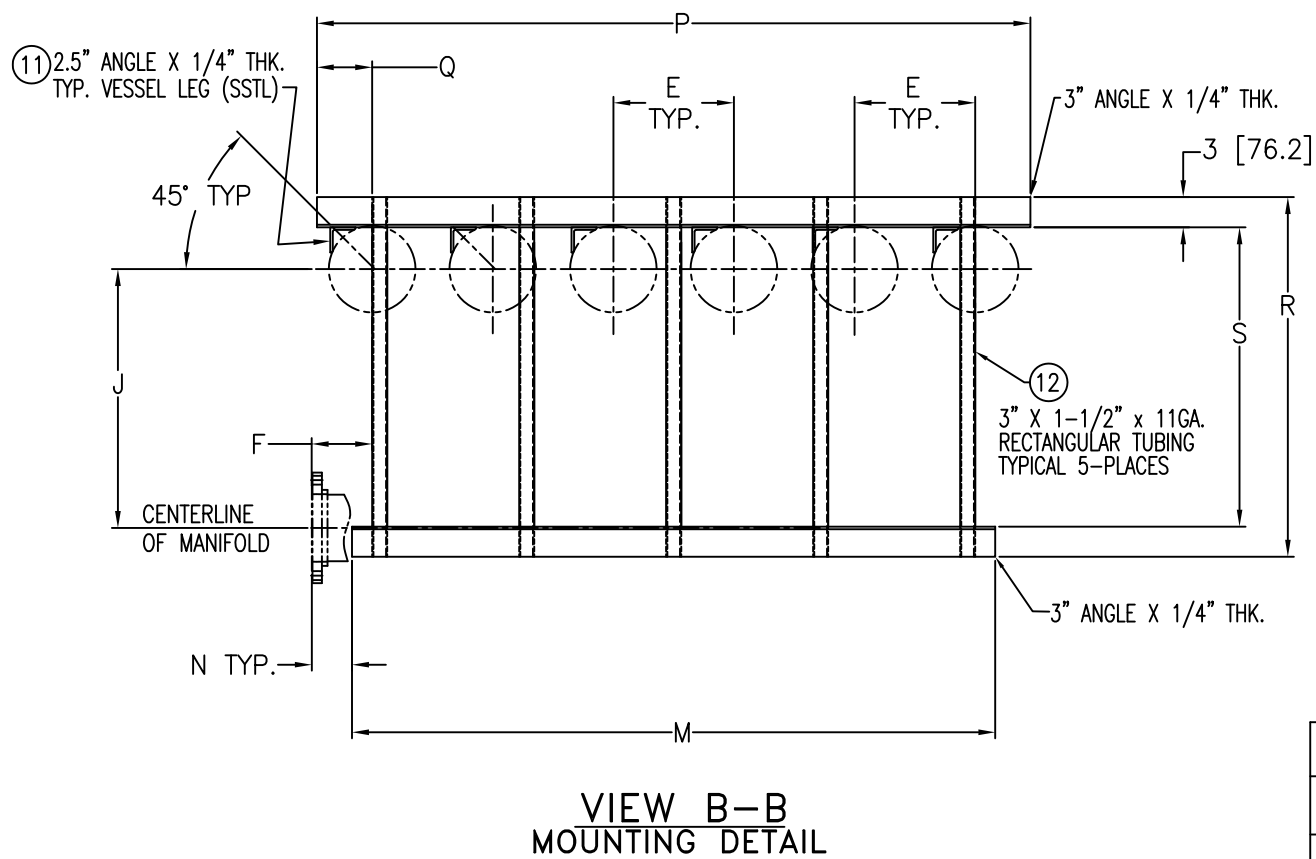
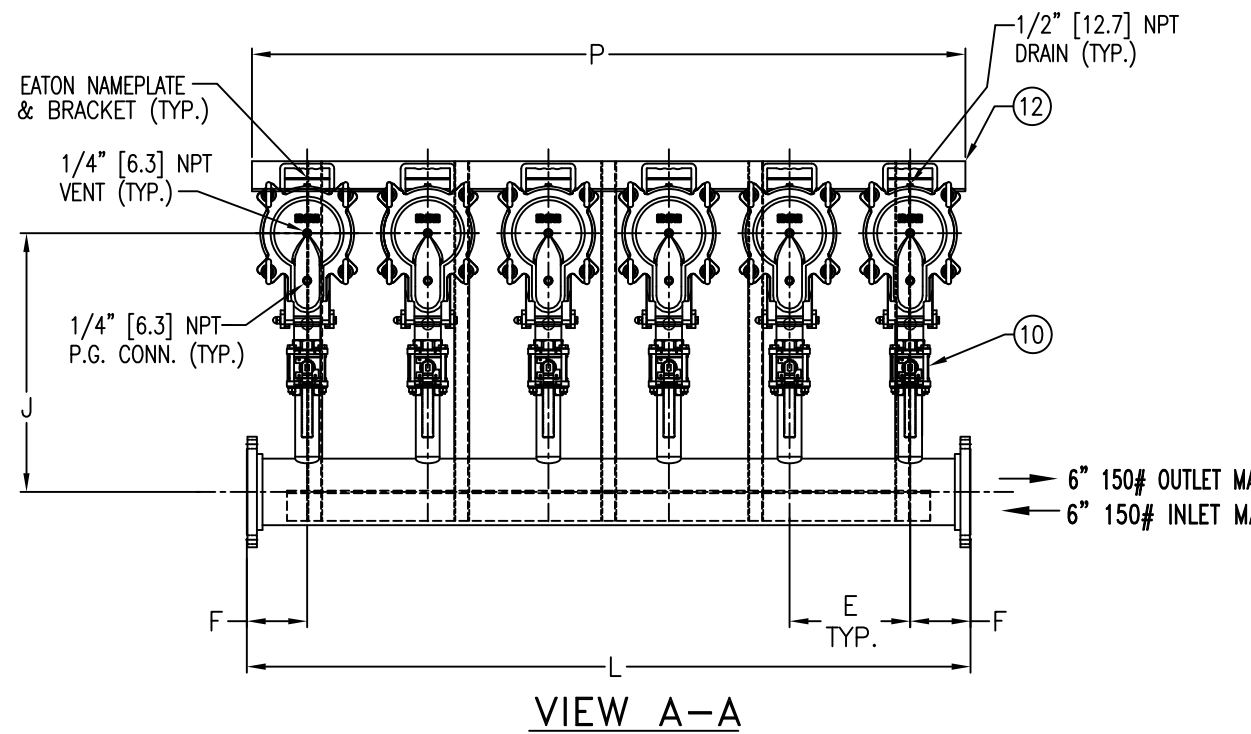
NOTES:

1. VESSEL DESIGNED, CONSTRUCTED, & "UM" STAMPED IN ACCORDANCE WITH ASME SECT. VIII, DIV. 1 LATEST EDITION AND ADDENDA.
2. MANIFOLD INLET/OUTLET FLANGED CONNECTIONS PER ANSI B16.5
3. MAWP: 150 PSI @ 250° F MDMT: -20° F @ 150 PSI
(10.3 BAR @ 121.1° C) (-28.9° C @ 10.3 BAR)
4. INTER-CONNECTING VALVE HARDWARE WILL BE SUPPLIED.
5. DIMENSIONS SHOWN IN [] ARE IN MILLIMETERS AND FOR REFERENCE ONLY. ACCEPTANCE OF THIS PART WILL BE BASED ON "INCH" UNITS & TOLERANCES ONLY.
6. 2" SOCKET WELD BALL VALVES STAINLESS STEEL EATON STANDARD P/N RPV0000018 & RPV0000019 FULL PORT 3 PIECE.

C U S T O M E R I N F O		T O L E R A N C E S (UNLESS OTHERWISE SPECIFIED)	DRAWN BY FJM		HYDRAULICS GROUP F I L T R A T I O N D I V I S I O N GALESBURG, MICHIGAN, USA • TINTON FALLS, NEW JERSEY, USA			
NAME		DECIMAL: .X ± .030 .XX ± .010 .XXX ± .005	SCALE AS DRAWN		EATON MODULINE TOPLINE (MTBF-0502) FILTER VESSEL 6"-150# IN/OUT FLANGE MANIFOLD MATERIAL SS-316 W/BALL VALVES			
P.O. NO.		FRACTIONAL: NOZZLE Ø TO FLOOR: 1/8" < 4' > 1/4" FACE TO FACE: 1/8" < 4' > 1/4" ANGULAR: FLANGES (H/V): ± 1/2" VESSEL OVERALL HT: 1"	RESTRICTION RESTRICTED					
S.O. NO.		BOLT HOLES MUST STRADDLE Ø MACHINED PARTS TO BE FREE OF BURRS FOR ADDITIONAL TOLERANCE DETAILS REF. ES-211, ES-222 AND ES-223	SHEET 1 OF 1					
QUANTITY		REVIEWED FOR CLASSIFICATION PER PR-4	PROJECTION THIRD ANGLE		DATE 04/27/09	SIZE B	DWG FILENAME MTBF05XS	REV B
PART NO.	F3AVTB0405	CRITICAL SIGNIFICANT	EATON CORPORATION - CONFIDENTIAL AND PROPRIETARY NOTICE TO PERSONS RECEIVING THIS DRAWING AND/OR TECHNICAL INFORMATION THIS DOCUMENT, INCLUDING THE DRAWING AND INFORMATION CONTAINED THEREIN IS CONFIDENTIAL AND IS THE EXCLUSIVE PROPERTY OF EATON AT ANY TIME. BY TAKING THE POSSESSION OF THIS DOCUMENT THE RECIPIENT ACKNOWLEDGES AND AGREES THAT THIS DOCUMENT CANNOT BE USED IN ANY MANNER ADVERSE TO THE INTEREST OF EATON AND THAT NO PORTION OF THIS DRAWING MAY BE COPIED OR OTHERWISE REPRODUCED WITHOUT THE PRIOR WRITTEN CONSENT OF EATON, IN THE CASE OF CONFLICTION CONTRACTUAL PROVISIONS, THIS NOTICE SHALL GOVERN THE STATUS OF THIS DOCUMENT. 2014 EATON CORPORATION - ALL RIGHTS RESERVED.					

ITEM NUMBER	BAG SIZE	A IN. / MM	B IN. / MM	C IN. / MM	D IN. / MM	E IN. / MM	F IN. / MM	G IN. / MM	H IN. / MM	J IN. / MM	K IN. / MM	L IN. / MM	M IN. / MM	N IN. / MM	P IN. / MM	Q IN. / MM	R IN. / MM	S IN. / MM	WEIGHT LBS / KGS
F3AVTB0406	O2	8-5/8 / 219	43-1/2 / 1100	49-1/16 / 1246.1	75 / 1906.5	12 / 305	6 / 152.4	34 / 864	9-5/16 / 236.5	25-3/4 / 654	7-1/2 / 190.5	72 / 1829	64 / 1626	4 / 101.6	71 / 1803	5-1/2 / 139.7	35-3/4 / 908	29-3/4 756	950 / 431

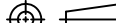
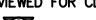

R E V I S I O N S				
REV	DESCRIPTION	BY	ECO	DATE
A	NEW ISSUE	FJM	0030160	06/21/10
B	UPDATED DRAWING	FJM	0105819	12/22/14



NO.	PART NAME	MATERIAL
1	BODY	SA-351 CF8M SA-312 TP 316
2	PIN	SA-193 GR B7, ZINC PL
3	EYE BOLT	SA-193 GR B7, ZINC PL
4	EYE NUT	SA-194 GR 2H, ZINC PL
5	COVER	SA-351 CF8M
6	O-RINGS (2)	BUNA-N
7	RESTRAINER BASKET	316 STAINLESS STEEL
8	2" ELBOW ASSEMBLY	316 STAINLESS STEEL
9	6" 150# MANIFOLDS	316 STAINLESS STEEL
10	2" 150# BALL VALVE	SEE NOTE 6
11	VESSEL ANGLE LEG SUPPORT	STAINLESS STEEL
12	SKID ASSEMBLY	STAINLESS STEEL

NOTES:

1. VESSEL DESIGNED, CONSTRUCTED, & "UM" STAMPED IN ACCORDANCE WITH ASME SECT. VIII, DIV. 1 LATEST EDITION AND ADDENDA.
2. MANIFOLD INLET/OUTLET FLANGED CONNECTIONS PER ANSI B16.5
3. MAWP: 150 PSI @ 250° F MDMT: -20° F @ 150 PSI
(10.3 BAR @ 121.1° C) (-28.9° C @ 10.3 BAR)
4. INTER-CONNECTING VALVE HARDWARE WILL BE SUPPLIED.
5. ALL DIMENSIONS ARE IN INCHES & [] MILLIMETERS.
6. 2" SOCKET WELD BALL VALVES STAINLESS STEEL EATON STANDARD
P/N RPV0000018 & RPV0000019 FULL PORT 3 PIECE.

C U S T O M E R I N F O		T O L E R A N C E S (UNLESS OTHERWISE SPECIFIED)		DRAWN BY FJM		<div>EATON</div> HYDRAULICS GROUP F I L T R A T I O N D I V I S I O N GALESBURG, MICHIGAN, USA • TINTON FALLS, NEW JERSEY, USA			
NAME		DECIMAL: .X ± .030 .XX ± .010 .XXX ± .005		SCALE AS DRAWN		TITLE MODULINE TOPLINE (MTBF-0602) FILTER VESSEL 6"—150# IN/OUT FLANGE MANIFOLD MATERIAL SS-316 W/BALL VALVES			
P.O. NO.		FRACTIONAL: NOZZLE ϕ TO FLOOR: FACE TO FACE: ANGULAR:	$\pm \frac{1}{16}$ $\frac{1}{8}" < 4' > \frac{1}{2}"$ $\frac{1}{8}" < 4' > \frac{1}{2}"$ $\pm 1^\circ$	RESTRICTION RESTRICTED					
S.O. NO.		FLANGES (H/V): VESSEL OVERALL HT:	$\pm \frac{1}{2}"$ 1"	SHEET 1 OF 1					
QUANTITY		BOLT HOLES MUST STRADDLE ϕ MACHINED PARTS TO BE FREE OF BURRS FOR ADDITIONAL TOLERANCE DETAILS REF. ES-211, ES-222 AND ES-223		PROJECTION THIRD ANGLE					
PART NO. F3AVTB0406		REVIEWED FOR CLASSIFICATION PER PR-4  CRITICAL  SIGNIFICANT		EATON CORPORATION - CONFIDENTIAL AND PROPRIETARY NOTICE TO PERSONS RECEIVING THIS DRAWING AND/OR TECHNICAL INFORMATION THIS DOCUMENT, INCLUDING THE DRAWING AND INFORMATION CONTAINED THEREIN IS THE EXCLUSIVE PROPERTY OF EATON. BY TAKING THE POSSESSION OF THIS DOCUMENT THE RECIPIENT ACKNOWLEDGES AND AGREES THAT THIS DOCUMENT CANNOT BE USED IN ANY MANNER ADVERSE TO THE INTEREST OF EATON AND THAT NO PORTION OF THIS DRAWING MAY BE COPIED OR OTHERWISE REPRODUCED WITHOUT THE PRIOR WRITTEN CONSENT OF EATON. IN THE CASE OF CONFLICTION CONTRACTUAL PROVISIONS, THIS NOTICE SHALL GOVERN THE STATUS OF THIS DOCUMENT. 2014 EATON CORPORATION - ALL RIGHTS RESERVED.					

Technical drawing of a manifold assembly. The side view shows a manifold with six ports. Dimensions include a total length 'P' and a port spacing of 1/4" [6.3] NPT. Callouts include 'EATON NAMEPLATE & BRACKET (TYP.)', '1/4" [6.3] NPT VENT (TYP.)', '1/2" [12.7] NPT DRAIN (TYP.)', and '1/4" [6.3] NPT P.G. CONN. (TYP.)'. A circled '12' is also present. A section line 'E' is shown on the right. A revision table is located on the right side of the drawing.

REVISIONS		ECR	BY	APP
REV	DESCRIPTION	BY	ECO	DATE
A	NEW ISSUE	FJM	0030160	06/21/10
B	UPDATED DRAWING	FJM	0106840	01/26/15
C	UPDATED "H" DIMENSION	FJM	0108035	02/24/15
D	REVISED NOTE 1	FJM	0120672	03/04/16
E	REVISED DIM. B	FJM	0121263	03/22/16





VIEW A-A

VIEW B-B
MOUNTING DETAIL

Quick & Discounted Pricing
Click Here
Or Call 908.362.9981

NO.	PART NAME	MATERIAL
1	BODY	SA-351 CF8M SA-312 TP 316
2	PIN	SA-193 GR B7, ZINC PL
3	EYE BOLT	SA-193 GR B7, ZINC PL
4	EYE NUT	SA-194 GR 2H, ZINC PL
5	COVER	SA-351 CF8M
6	O-RINGS (2) P/N 811333 & L0000024	BUNA-N
7	RESTRAINER BASKET P/N L0001753	316 STAINLESS STEEL
8	2" ELBOW ASSEMBLY	316 STAINLESS STEEL
9	6" 150# MANIFOLDS	316 STAINLESS STEEL
10	2" 150# BALL VALVE	SEE NOTE 6
11	VESSEL ANGLE LEG SUPPORT	STAINLESS STEEL
12	SKID ASSEMBLY	STAINLESS STEEL

1. UNITS ARE DESIGNED, FABRICATED AND "UM" STAMPED IN ACCORDANCE WITH THE ASME BOILER & PRESSURE VESSEL CODE SECTION VIII, DIVISION 1, IN COMPLIANCE TO CURRENT MANDATORY EDITION.
2. MANIFOLD INLET/OUTLET FLANGED CONNECTIONS PER ANSI B16.5
3. MAWP: 150 PSI @ 250° F MDMT: -20° F @ 150 PSI
(10.3 BAR @ 121.1° C) (-28.9° C @ 10.3 BAR)
4. INTER-CONNECTING VALVE HARDWARE WILL BE SUPPLIED.
5. ALL DIMENSIONS ARE IN INCHES & [] MILLIMETERS.
6. 2" SOCKET WELD BALL VALVES STAINLESS STEEL EATON STANDARD P/N RPV0000018 & RPV0000019 FULL PORT 3 PIECE.

CUSTOMER INFO		TOLERANCES (UNLESS OTHERWISE SPECIFIED)		DRAWN BY FJM		 HYDRAULICS GROUP FILTRATION DIVISION GALESBURG, MICHIGAN, USA • TINTON FALLS, NEW JERSEY, USA			
NAME		DECIMAL: X ± .030 XX ± .010 XXX ± .005		SCALE AS DRAWN		TITLE MODULINE TOPLINE (MTBF-0702) FILTER VESSEL 6"-150# IN/OUT FLANGE MANIFOLD MATERIAL SS-316 W/BALL VALVES			
P.O. NO.		FRACTIONAL: ± 1/8 NOZZLE \varnothing TO FLOOR: $\frac{1}{8}$ " < 4' > $\frac{1}{2}$ " FACE TO FACE: $\frac{1}{8}$ " < 4' > $\frac{1}{2}$ " ANGULAR: ± 1° FLANGES (H/V): ± 1/2° VESSEL OVERALL HT: 1"		RESTRICTION RESTRICTED					
S.O. NO.		BOLT HOLES MUST STRADDLE \varnothing MACHINED PARTS TO BE FREE OF BURRS FOR ADDITIONAL TOLERANCE DETAILS REF. ES-211, ES-222 AND ES-223		SHEET 1 OF 1					
QUANTITY		REVIEWED FOR CLASSIFICATION PER PR-4		PROJECTION THIRD ANGLE		DATE 04/27/09	SIZE B	DWG FILENAME MTBF07XS	REV E
PART NO.	F3AVTB0407	 CRITICAL  SIGNIFICANT		EATON CORPORATION - CONFIDENTIAL AND PROPRIETARY NOTICE TO PERSONS RECEIVING THIS DRAWING AND/OR TECHNICAL INFORMATION THIS DOCUMENT, INCLUDING THE DRAWING AND INFORMATION CONTAINED THEREON IS CONFIDENTIAL AND THE EXCLUSIVE PROPERTY OF EATON. ANY POSSESSION OF THIS DOCUMENT THE RECIPIENT ACKNOWLEDGES AND AGREES THAT THIS DOCUMENT CANNOT BE USED IN ANY MANNER ADVERSE TO THE INTEREST OF EATON AND THAT NO PORTION OF THIS DRAWING MAY BE COPIED OR OTHERWISE REPRODUCED WITHOUT THE PRIOR WRITTEN CONSENT OF EATON. IN THE CASE OF CONFLICTION CONTRACTUAL PROVISIONS, THIS NOTICE SHALL GOVERN THE STATUS OF THIS DOCUMENT. 2014 EATON CORPORATION - ALL RIGHTS RESERVED.					

