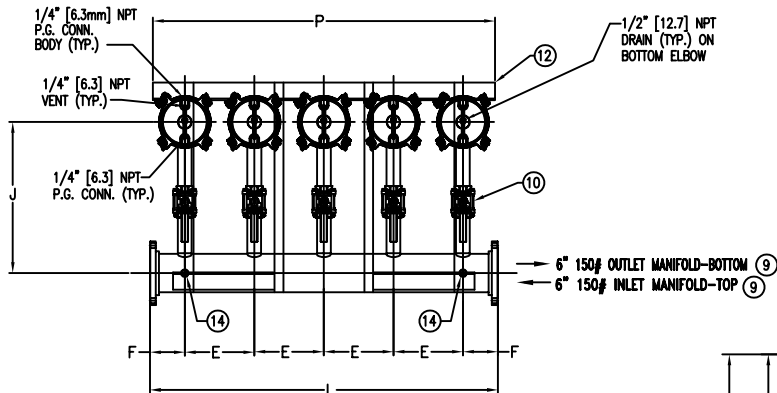
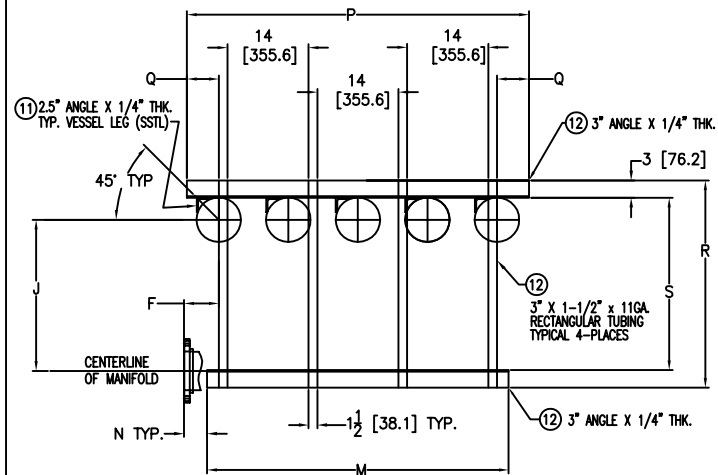


ITEM NUMBER	BAG SIZE	A IN. / MM	B IN. / MM	C IN. / MM	D IN. / MM	E IN. / MM	F IN. / MM	G IN. / MM	H IN. / MM	I IN. / MM	J IN. / MM	K IN. / MM	L IN. / MM	M IN. / MM	N IN. / MM	P IN. / MM	Q IN. / MM	R IN. / MM	S IN. / MM	WEIGHT LBS / KGS
F3AVFB20405	O2	7.677 / 195	44-5/8 / 1133.5	51-1/2 / 1308.1	78 / 1981.2	12 / 304.8	6 / 152.4	35-5/16 / 896.9	9-5/16 / 236.5	26-1/16 / 662	39-5/8 / 1006.4	60 / 1524	52 / 1320.8	4 / 101.6	59 / 1498.6	5-1/2 / 139.7	35-3/4 / 908	29-3/4 / 755.6	750 / 340.2	



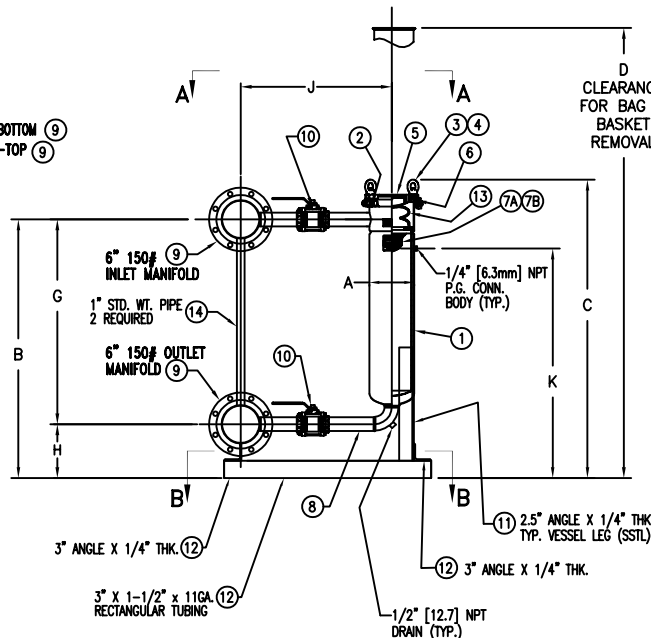
VIEW A-A



VIEW B-B
MOUNTING DETAIL

Quick & Discounted Pricing
Click Here
Or Call 908.362.9981

R E V I S I O N S				
REV	DESCRIPTION	BY	ECO	DATE
A	NEW RELEASE	FJM	0124696	07/11/16



NO.	PART NAME	MATERIAL
1	BODY	316 STAINLESS STEEL
2	NUT/BOLT	STEEL, ZINC PLATED
3	EYE BOLT	STEEL, ZINC PLATED
4	EYE NUT	STEEL, ZINC PLATED
5	COVER	316 STAINLESS STEEL
6	O-RING COVER P/N X811445	BUNA-N
7A	RESTRAINER BASKET P/N WEE0000009	316 STAINLESS STEEL
7B	O-RING BASKET P/N RPC0000004	BUNA-N
8	2" ELBOW ASSEMBLY	316 STAINLESS STEEL
9	6" 150# MANIFOLDS	316 STAINLESS STEEL
10	2" 1000# WOG BALL VALVE	SEE NOTE 4
11	VESSEL ANGLE LEG SUPPORT	STAINLESS STEEL
12	SKID ASSEMBLY	STAINLESS STEEL
13	BAG HOLD DOWN	KYNAR
14	MANIFOLD SUPPORT	304 STAINLESS STEEL

NOTES:

- MANIFOLD INLET/OUTLET 6" 150# CONNECTIONS PER ANSI B16.5.
- MAWP: 150 PSI @ 250° F (-20° F @ 150 PSI)
(10.3 BAR @ 121.1° C) (-28.9° C @ 10.3 BAR)
- ALL DIMENSIONS ARE IN INCHES & [] MILLIMETERS.
- 2" SOCKET WELD BALL VALVES STAINLESS STEEL EATON STANDARD P/N RPV0000018 & RPV0000019 FULL PORT 3 PIECE.

CUSTOMER INFO	
NAME	
P.O. NO.	
S.O. NO.	
QUANTITY	
PART NO.	F3AVFB20405

TOLERANCES (UNLESS OTHERWISE SPECIFIED)
DECIMAL: X .030 X .010 X .005
FRACTIONAL: NOZZLE & TO FLOOR: FACE TO FACE: ANGULAR: FLANGES (H/A): VESSEL OVERALL HT: BOLT HOLES MUST STRADDLE & MACHINED PARTS TO BE FREE OF BURRS FOR ADDITIONAL TOLERANCE DETAILS REF. ES-211, ES-223 AND ES-225 REVIEWED FOR CLASSIFICATION PER-4
CRITICAL

DRAWN BY FJM	SCALE AS DRAWN
RESTRICTION RESTRICTED	SHEET 1 OF 1
PROJECTION THIRD ANGLE	

HYDRAULICS GROUP FILTRATION DIVISION GALESBURG, MASSACHUSETTS USA • TINTON FALLS, NEW JERSEY, USA	
TITLE MODULE FLOWLINE II (MFBF2-0502) FILTER VESSEL 6" 150# IN/OUT FLANGE MANIFOLD MAT'L. SS-316 W/BALL VALVES	
DATE 07/11/16	SIZE B
DWG FILENAME MFBF205XS	REV A

