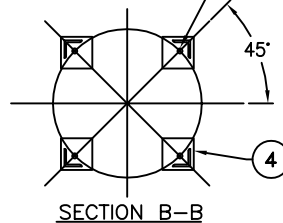
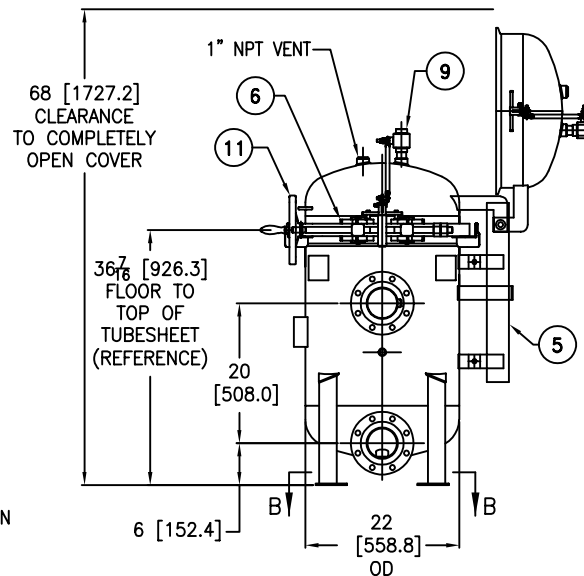
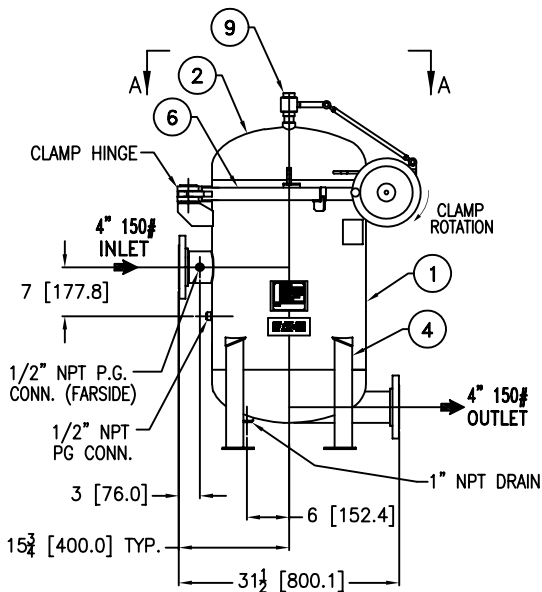


(4) .75 [19.0] Ø BOLT HOLES  
LOCATED ON 21.26 [540.0] B.C.D.



REVISIONS				
REV	DESCRIPTION	BY	ECO	DATE
F	UPDATED DRAWING & NOTE 1	FJM	0129271	11/21/16

ITEM	PART NAME	MATERIAL
1	BODY	SA240-316/316L
2	COVER	SA240-316/316L
3	O-RING P/N L0000292	BUNA-N
4	LEGS	STAINLESS STEEL
5	SPRING ASSISTED MECHANISM	STAINLESS STEEL
6	CLAMP ASSEMBLY	STAINLESS STEEL
7	RESTRAINER BASKET P/N L0001753	316 SS
8	FILTER BAG HOLD DOWN	316 SS
9	1" VENT VALVE ASSY.	316 SS
10	SPINDLE BOLT	SA193-B7 NEDOX COATED
11	SPINDLE HAND WHEEL	ALUMINUM (BLACK COATED)



#### NOTES:

- UNITS ARE DESIGNED, FABRICATED AND "U" STAMPED IN ACCORDANCE WITH THE ASME BOILER & PRESSURE VESSEL CODE SECTION VIII, DIVISION 1, IN COMPLIANCE TO CURRENT MANDATORY EDITION.
- INLET/OUTLET FLANGE CONNECTIONS PER ANSI B16.5
- DESIGN PRESSURE: 150 PSIG @ 250°F (10.3 BAR @ 121.1°C)
- DIMENSIONS SHOWN IN [ ] ARE IN MILLIMETERS AND FOR REFERENCE ONLY. ACCEPTANCE OF THIS PART WILL BE BASED ON "INCH" UNITS & TOLERANCES ONLY.
- ALL BOLT HOLES STRADDLE NATURAL CENTERLINE.
- APPROX. WEIGHT (DRY): 485 lbs. (219 kgs.)
- APPROX. SHIPPING WEIGHT 605 lbs. (274 kgs.)

VESSEL CODE: VMBF-0402-AB10-040A-UT-11SE

TOLERANCES (UNLESS OTHERWISE SPECIFIED)	
DECIMAL:	.X ± .030 .XX ± .010 .XXX ± .005
FRACTIONAL:	± 1/16
NOZZLE Ø TO FLOOR:	1/8" < 4' > 1/4"
FACE TO FACE:	1/8" < 4' > 1/4"
ANGULAR:	± 1°
FLANGES (H/V):	± 1/2"
VESSEL OVERALL HT:	1"

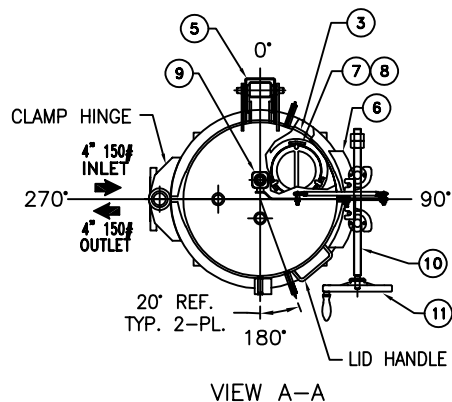
BOLT HOLES MUST STRADDLE Ø  
MACHINED PARTS TO BE FREE OF BURRS  
FOR ADDITIONAL TOLERANCE DETAILS  
REF. ES-211, ES-222 AND ES-223

REVIEWED FOR CLASSIFICATION PER PR-4  
CRITICAL SIGNIFICANT

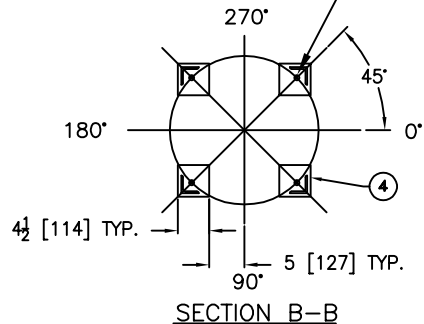
CUSTOMER INFO	
NAME	
P.O. NO.	
S.O. NO.	
QUANTITY	
PART NO.	F3AV0400010

DRAWN BY	FJM	HYDRAULICS GROUP FILTRATION DIVISION GALESBURG, MICHIGAN, USA • TINTON FALLS, NEW JERSEY, USA	
SCALE	AS DRAWN		
RESTRICTION	RESTRICTION	TITLE MAXILINE (VMBF-0402) FILTER VESSEL 4" 150# RF INLET/ TANGENTIAL OUTLET SPINDLE TYPE-SE IN-LINE MAT'L. SS-316	
SHEET	1 OF 1		
PROJECTION	THIRD ANGLE	DATE	01/28/03
		SIZE	A
		DWG FILENAME	SE0404TS
		REV	F

EATON CORPORATION - CONFIDENTIAL AND PROPRIETARY NOTICE TO PERSONS RECEIVING THIS DRAWING AND/OR TECHNICAL INFORMATION  
THIS DOCUMENT, INCLUDING THE DRAWING AND INFORMATION CONTAINED THEREON IS CONFIDENTIAL AND IS THE EXCLUSIVE PROPERTY OF EATON AT ANY TIME. BY TAKING THE  
POSSESSION OF THIS DOCUMENT THE RECIPIENT ACKNOWLEDGES AND AGREES THAT THIS DOCUMENT CANNOT BE USED IN ANY MANNER ADVERSE TO THE INTEREST OF EATON AND  
THAT NO PORTION OF THIS DRAWING MAY BE COPIED OR OTHERWISE REPRODUCED WITHOUT THE PRIOR WRITTEN CONSENT OF EATON, IN THE CASE OF CONFLICT OF CONTRACTUAL  
PROVISIONS, THIS NOTICE SHALL GOVERN THE STATUS OF THIS DOCUMENT.  
2010 EATON CORPORATION - ALL RIGHTS RESERVED.

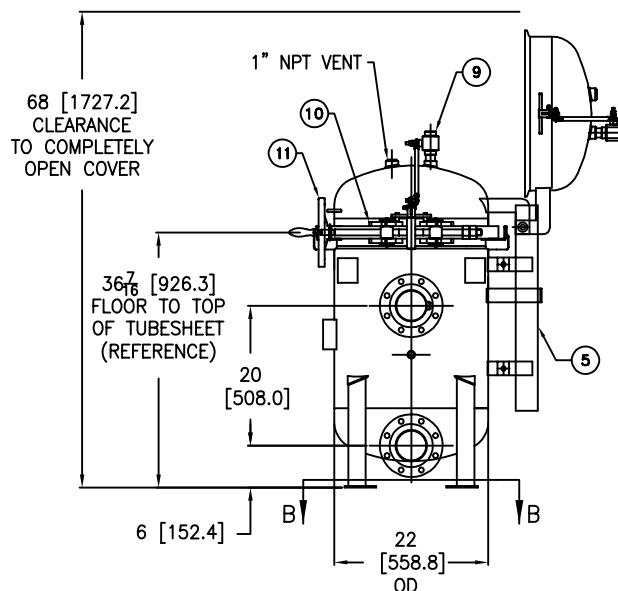
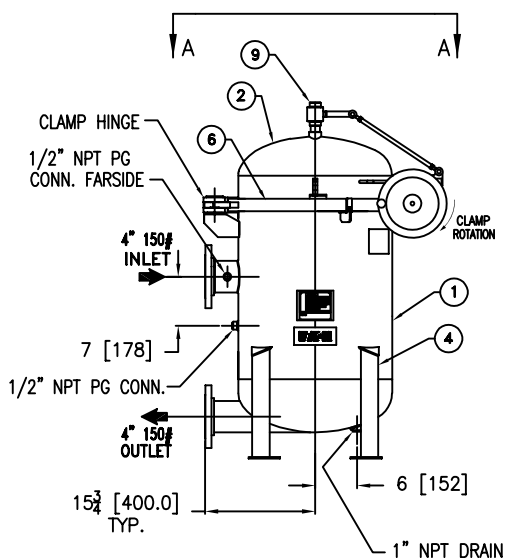


(4) .75 [19.0] Ø BOLT HOLES  
LOCATED ON 21.26 [540.0] B.C.D.



R E V I S I O N S			
REV	DESCRIPTION	BY	ECO DATE
C	UPDATED DRAWING	FJM	0154236 09/25/17

ITEM	PART NAME	MATERIAL
1	BODY	SA240-304/304L
2	COVER	SA240-304/304L
3	O-RING P/N L0000292	BUNA-N
4	LEGS	STAINLESS STEEL
5	SPRING ASSISTED MECHANISM	STAINLESS STEEL
6	CLAMP ASSEMBLY	STAINLESS STEEL
7	RESTRAINER BASKET P/N L0001753	316 SS
8	FILTER BAG HOLD DOWN	316 SS
9	1" VENT VALVE ASSY.	316 SS
10	SPINDLE BOLT	SA193-B7 NEDOX COATED
11	SPINDLE HANDLE	ALUMINUM (BLACK COATED)



#### NOTES:

1. UNITS ARE DESIGNED, FABRICATED AND "U" STAMPED IN ACCORDANCE WITH THE ASME BOILER & PRESSURE VESSEL CODE SECTION VIII, DIVISION 1, IN COMPLIANCE TO CURRENT MANDATORY EDITION.
2. INLET/OUTLET FLANGE CONNECTIONS PER ANSI B16.5
3. DESIGN PRESSURE: 150 PSIG @ 250°F  
(10.3 BAR @ 121.1°C)
4. DIMENSIONS SHOWN IN [ ] ARE IN MILLIMETERS AND FOR REFERENCE ONLY. ACCEPTANCE OF THIS PART WILL BE BASED ON "INCH" UNITS & TOLERANCES ONLY.
5. ALL BOLT HOLES STRADDLE NATURAL CENTERLINE.
6. APPROX. WEIGHT (DRY): 485 lbs. (219 kgs.)
7. APPROX. SHIPPING WEIGHT 605 lbs. (274 kgs.)

VESSEL CODE: VMBF-0402-BB10-040A-UT-11SE-LOOP

TOLERANCES (UNLESS OTHERWISE SPECIFIED)	
DECIMAL:	.X ± .030 .XX ± .010 .XXX ± .005
FRACTIONAL:	± 1/16
NOZZLE Ø TO FLOOR:	1/8" < 4" > 1/4"
FACE TO FACE:	1/8" < 4" > 1/4"
ANGULAR:	± 1°
FLANGES (H/V):	± 1/2"
VESSEL OVERALL HT:	1"

BOLT HOLES MUST STRADDLE Ø  
MACHINED PARTS TO BE FREE OF BURRS  
FOR ADDITIONAL TOLERANCE DETAILS:  
REF. ES-211, ES-222 AND ES-223

REVIEWED FOR CLASSIFICATION PER PR-4  
CRITICAL SIGNIFICANT

#### CUSTOMER INFO

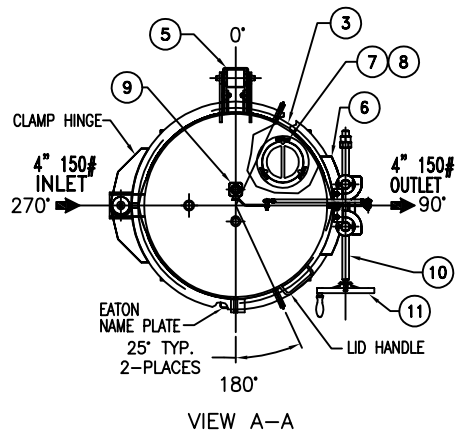
NAME	
P.O. NO.	
S.O. NO.	
QUANTITY	
PART NO.	F3AV0400010L304

DRAWN BY	FJM
SCALE	AS DRAWN
RESTRICTION	RESTRICTION
SHEET	1 OF 1
PROJECTION	THIRD ANGLE

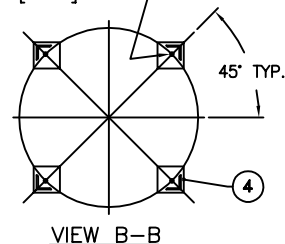
EATON		HYDRAULICS GROUP FILTRATION DIVISION GALESBURG, MICHIGAN, USA • TINTON FALLS, NEW JERSEY, USA	
TITLE		MAXILINE (VMBF-0402) FILTER VESSEL 4" 150# RF INLET/TANGENTIAL OUTLET SPINDLE TYPE-SE LOOP STYLE MAT'L. SS-304	
DATE	06/20/06	SIZE	A
DWG FILENAME	SE0404TSL304	REV	C

EATON CORPORATION - CONFIDENTIAL AND PROPRIETARY NOTICE TO PERSONS RECEIVING THIS DRAWING AND/OR TECHNICAL INFORMATION  
THIS DOCUMENT, INCLUDING THE DRAWING AND INFORMATION CONTAINED THEREON IS THE EXCLUSIVE PROPERTY OF EATON AT ANY TIME. BY TAKING THE  
POSSESSION OF THIS DOCUMENT THE RECIPIENT ACKNOWLEDGES AND AGREES THAT THIS DOCUMENT CANNOT BE USED IN ANY MANNER ADVERSE TO THE INTEREST OF EATON AND  
THAT NO PORTION OF THIS DRAWING MAY BE COPIED OR OTHERWISE REPRODUCED WITHOUT THE PRIOR WRITTEN CONSENT OF EATON. IN THE CASE OF CONFLICTING CONTRACTUAL  
PROVISIONS, THIS NOTICE SHALL GOVERN THE STATUS OF THIS DOCUMENT.  
2017 EATON CORPORATION - ALL RIGHTS RESERVED.



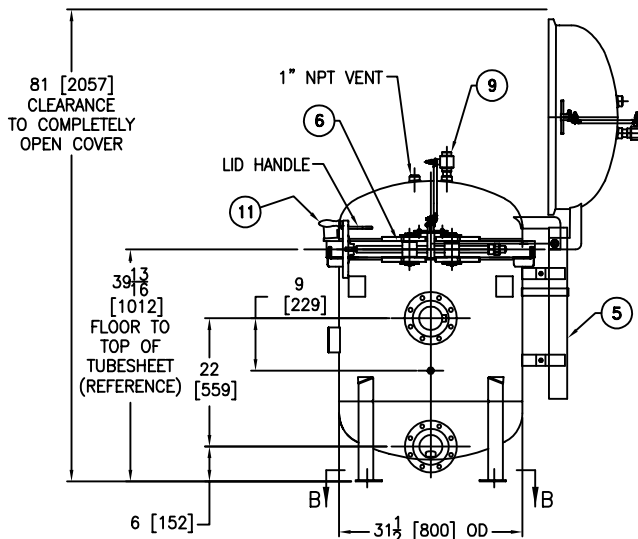
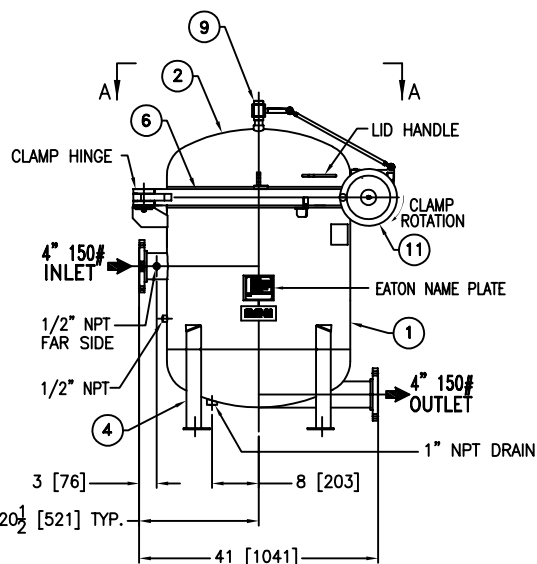


(4) .75 [19.0] Ø BOLT HOLES  
LOCATED ON 30.71 [780.0] B.C.D.



REVISIONS				
REV	DESCRIPTION	BY	ECO	DATE
E	UPDATED DRAWING	FJM	0108927	03/19/15

ITEM	PART NAME	MATERIAL
1	BODY	SA240-316/316L
2	COVER	SA240-316/316L
3	O-RING P/N L0000293	BUNA-N
4	LEGS	STAINLESS STEEL
5	SPRING ASSISTED MECHANISM	STAINLESS STEEL
6	CLAMP ASSEMBLY	STAINLESS STEEL
7	RESTRAINER BASKET P/N L0001753	316 SS
8	FILTER BAG HOLD DOWN	316 SS
9	1\" VENT VALVE ASSY.	316 SS
10	SPINDLE BOLT	SA193-B7 NEDOX COATED
11	SPINDLE HAND WHEEL	ALUMINUM (BLACK COATED)



#### NOTES:

- UNITS ARE DESIGNED, FABRICATED & U STAMPED IN ACCORDANCE WITH ASME SECT. VIII, DIV. 1 BOILER & PRESSURE VESSEL CODE, IN COMPLIANCE TO LATEST ADDENDA.
- INLET/OUTLET FLANGE CONNECTIONS PER ANSI B16.5
- DESIGN PRESSURE: 150 PSIG @ 250°F  
(10.3 BAR @ 121.1°C)
- DIMENSIONS SHOWN IN [ ] ARE IN MILLIMETERS AND FOR REFERENCE ONLY. ACCEPTANCE OF THIS PART WILL BE BASED ON "INCH" UNITS & TOLERANCES ONLY.
- ALL BOLT HOLES STRADDLE NATURAL CENTERLINE.
- APPROX. WEIGHT (DRY): 920 lbs. (417.3 kgs.)
- APPROX. SHIPPING WEIGHT 1050 lbs. (476.3 kgs.)

TOLERANCES (UNLESS OTHERWISE SPECIFIED)	
DECIMAL:	X ± .030 .XX ± .010 .XXX ± .005
FRACTIONAL:	± 1/16
NOZZLE Ø TO FLOOR:	1/8" < 4" > 1/4"
FACE TO FACE:	1/8" < 4" > 1/4"
ANGULAR:	± 1°
FLANGES (H/V):	± 1/2"
VESSEL OVERALL HT:	1"

BOLT HOLES MUST STRADDLE Ø  
MACHINED PARTS TO BE FREE OF BURRS  
FOR ADDITIONAL TOLERANCE DETAILS  
REF. ES-211, ES-222 AND ES-223

REVIEWED FOR CLASSIFICATION PER PR-4  
CRITICAL SIGNIFICANT

CUSTOMER INFO	
NAME	
P.O. NO.	
S.O. NO.	
QUANTITY	
PART NO.	F3AV0800201

DRAWN BY FJM
SCALE AS DRAWN
RESTRICTION RESTRICTED
SHEET 1 OF 1
PROJECTION THIRD ANGLE

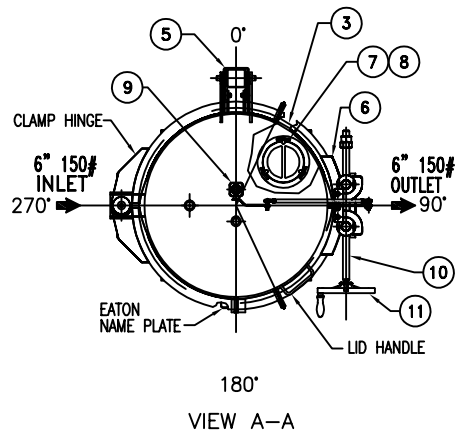
VESSEL CODE: VMBF-0802-AB10-040A-UT-11SE

**EATON** HYDRAULICS GROUP  
FILTRATION DIVISION  
GALESBURG, MICHIGAN, USA • TINTON FALLS, NEW JERSEY, USA

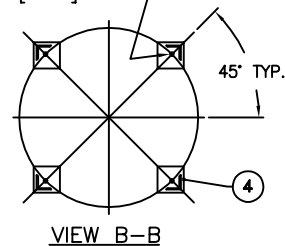
TITLE  
MAXILINE (VMBF-0802) FILTER VESSEL  
4" 150# RF INLET/ TANGENTIAL OUTLET  
SPINDLE TYPE-SE IN-LINE MAT'L. SS-316

DATE 08/27/03	SIZE A	DWG FILENAME SE0804TS	REV E
------------------	-----------	--------------------------	----------

EATON CORPORATION - CONFIDENTIAL AND PROPRIETARY NOTICE TO PERSONS RECEIVING THIS DRAWING AND/OR TECHNICAL INFORMATION  
THIS DOCUMENT INCLUDING THE DRAWING AND INFORMATION CONTAINED THEREIN IS CONFIDENTIAL AND IS THE EXCLUSIVE PROPERTY OF EATON AT ANY TIME. BY TAKING THE  
POSSESSION OF THIS DOCUMENT THE RECIPIENT ACKNOWLEDGES AND AGREES THAT THIS DOCUMENT CANNOT BE USED IN ANY MANNER TO THE INTEREST OF EATON AND  
THAT NO PORTION OF THIS DRAWING MAY BE COPIED OR OTHERWISE REPRODUCED WITHOUT THE PRIOR WRITTEN CONSENT OF EATON. IN THE CASE OF CONFLICT CONTRACTUAL  
PROVISIONS, THIS NOTICE SHALL GOVERN THE STATUS OF THIS DOCUMENT.  
2014 EATON CORPORATION - ALL RIGHTS RESERVED.

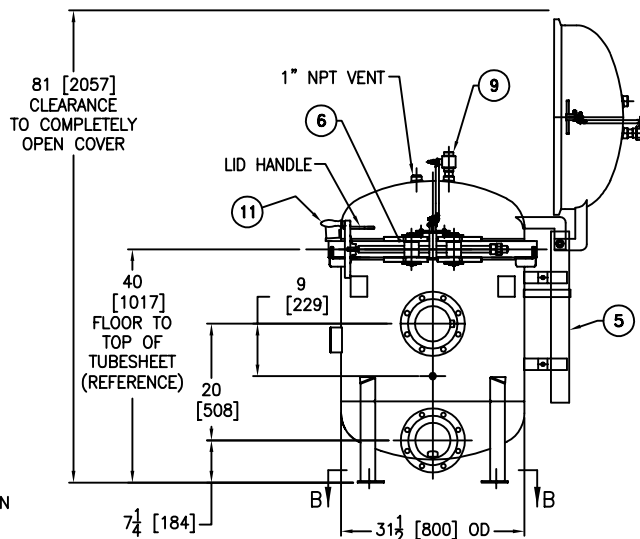
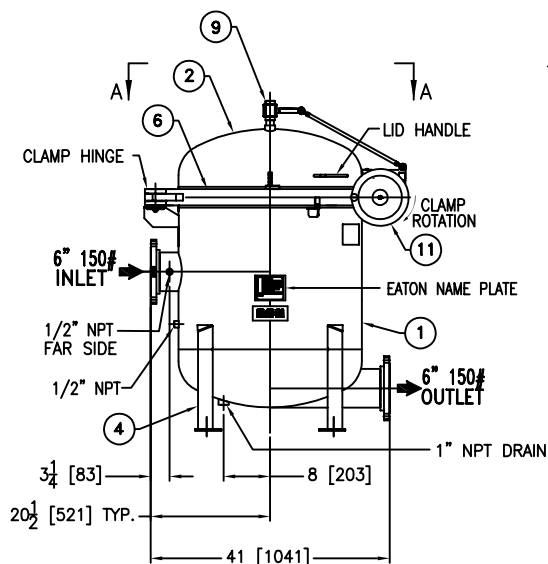


(4) .75 [19.0] Ø BOLT HOLES  
LOCATED ON 30.71 [780.0] B.C.D.



REVISIONS				
REV	DESCRIPTION	BY	ECO	DATE
F	UPDATED DRAWING	FJM	0168725	06/19/18

ITEM	PART NAME	MATERIAL
1	BODY	SA240-316/316L
2	COVER	SA240-316/316L
3	O-RING P/N L0000293	BUNA-N
4	LEGS	STAINLESS STEEL
5	SPRING ASSISTED MECHANISM	STAINLESS STEEL
6	CLAMP ASSEMBLY	STAINLESS STEEL
7	RESTRAINER BASKET P/N L0001753	316 SS
8	FILTER BAG HOLD DOWN	316 SS
9	1" VENT VALVE ASSY.	316 SS
10	SPINDLE BOLT	SA193-B7 NEDOX COATED
11	SPINDLE HAND WHEEL	ALUMINUM (BLACK COATED)



#### NOTES:

- UNITS ARE DESIGNED, FABRICATED AND "U" STAMPED IN ACCORDANCE WITH THE ASME BOILER & PRESSURE VESSEL CODE SECTION VIII, DIVISION 1, IN COMPLIANCE TO CURRENT MANDATORY EDITION.
- INLET/OUTLET FLANGE CONNECTIONS PER ANSI B16.5
- DESIGN PRESSURE: 150 PSIG @ 250°F  
(10.3 BAR @ 121.1°C)
- DIMENSIONS SHOWN IN [ ] ARE IN MILLIMETERS AND FOR REFERENCE ONLY. ACCEPTANCE OF THIS PART WILL BE BASED ON "INCH" UNITS & TOLERANCES ONLY.
- ALL BOLT HOLES STRADDLE NATURAL CENTERLINE.
- APPROX. WEIGHT (DRY): 920 lbs. (417 kgs.)
- APPROX. SHIPPING WEIGHT 1050 lbs. (476 kgs.)


TOLERANCES (UNLESS OTHERWISE SPECIFIED)	
DECIMAL:	X ± .030 .XX ± .010 .XXX ± .005
FRACTIONAL:	± 1/16
NOZZLE Ø TO FLOOR:	1/8" < 4" > 1/4"
FACE TO FACE:	1/8" < 4" > 1/4"
ANGULAR:	± 1°
FLANGES (H/V):	± 1/2"
VESSEL OVERALL HT:	1"

BOLT HOLES MUST STRADDLE Ø  
MACHINED PARTS TO BE FREE OF BURRS  
FOR ADDITIONAL TOLERANCE DETAILS  
REF. ES-211, ES-222 AND ES-223

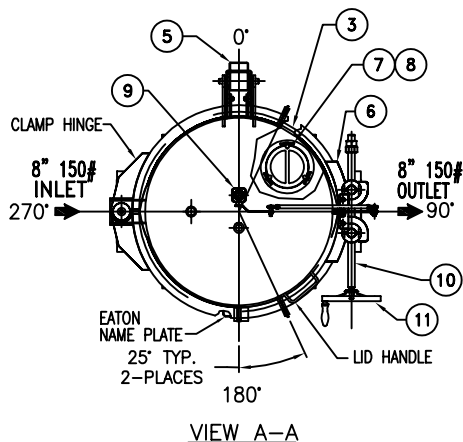
REVIEWED FOR CLASSIFICATION PER PR-4  
CRITICAL SIGNIFICANT

CUSTOMER INFO	
NAME	
P.O. NO.	
S.O. NO.	
QUANTITY	
PART NO.	F3AV0600200

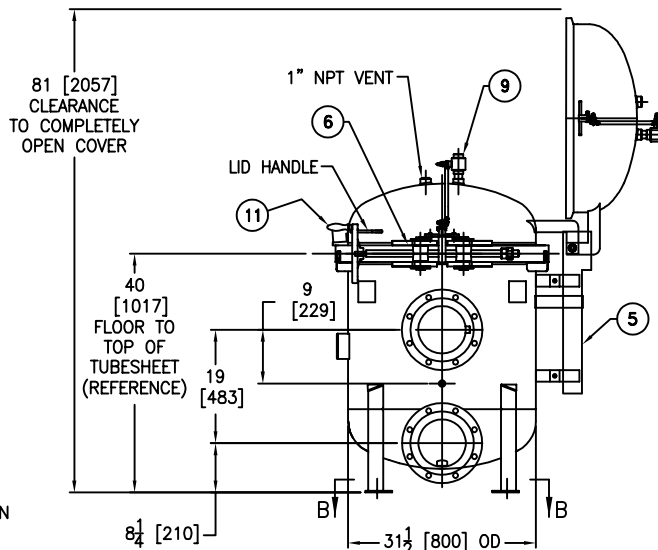
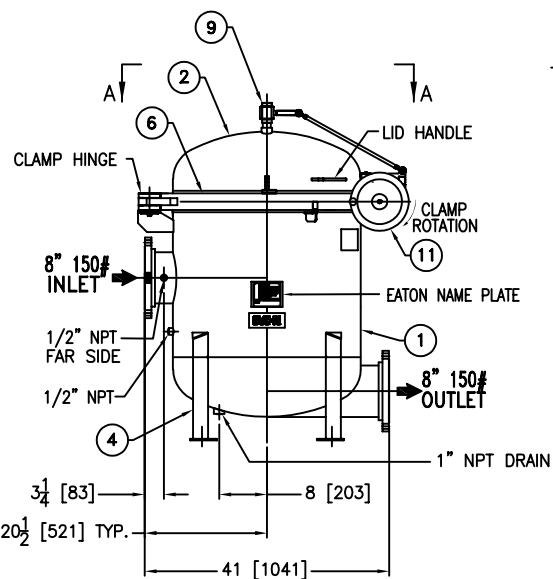
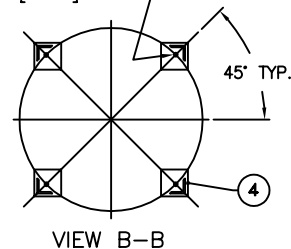
DRAWN BY	FJM
SCALE	AS DRAWN
RESTRICTION	RESTRICTION
SHEET	1 OF 1
PROJECTION	THIRD ANGLE

VESSEL CODE: VMBF-0602-AB10-060A-UT-11SE			
		HYDRAULICS GROUP FILTRATION DIVISION GALESBURG, MICHIGAN, USA • TINTON FALLS, NEW JERSEY, USA	
TITLE MAXILINE (VMBF-0602) FILTER VESSEL 6" 150# RF INLET/ TANGENTIAL OUTLET SPINDLE TYPE-SE IN-LINE MAT'L. SS-316			
DATE	03/19/03	SIZE	A
DWG FILENAME		SE0606TS	REV
CONFIDENTIAL AND PROPRIETARY NOTICE TO PERSONS RECEIVING THIS DRAWING AND/OR TECHNICAL INFORMATION: INFORMATION CONTAINED HEREON IS CONFIDENTIAL AND IS THE EXCLUSIVE PROPERTY OF EATON AT ANY TIME. BY TAKING THE ACKNOWLEDGMENTS AND AGREES THAT THIS DOCUMENT CANNOT BE USED BY ANY NAMEE AGREEER TO THE INTEREST OF EATON AND AGREES TO OTHERWISE REPRODUCED WITHOUT THE PRIOR WRITTEN CONSENT OF EATON. IN THE EVENT OF CONFLICT CONTRACTUAL PROVISIONS, THIS NOTICE SHALL GOVERN THE STATUS OF THIS DOCUMENT.			

EATON CORPORATION - CONFIDENTIAL AND PROPRIETARY NOTICE TO PERSONS RECEIVING THIS DRAWING AND/OR TECHNICAL INFORMATION  
THIS DOCUMENT INCLUDING THE DRAWING AND INFORMATION CONTAINED THEREON IS CONFIDENTIAL AND IS THE EXCLUSIVE PROPERTY OF EATON AT ANY TIME. BY TAKING THE  
POSSESSION OF THIS DOCUMENT THE RECIPIENT ACKNOWLEDGES AND AGREES THAT THIS DOCUMENT CANNOT BE USED IN ANY MANNER ADVERSE TO THE INTEREST OF EATON AND  
THAT NO PORTION OF THIS DRAWING MAY BE COPIED OR OTHERWISE REPRODUCED WITHOUT THE PRIOR WRITTEN CONSENT OF EATON. IN THE CASE OF CONFLICTION CONTRACTUAL  
PROVISIONS, THIS NOTICE SHALL GOVERN THE STATUS OF THIS DOCUMENT.  
2018 EATON CORPORATION - ALL RIGHTS RESERVED.



(4) .75 [19.0]  $\phi$  BOLT HOLES  
LOCATED ON 30.71 [780.0] B.C.D.



REVISIONS				
REV	DESCRIPTION	BY	ECO	DATE
F	UPDATED DRAWING	FJM	0087974	08/02/13

ITEM	PART NAME	MATERIAL
1	BODY	SA240-316/316L
2	COVER	SA240-316/316L
3	O-RING P/N L0000293	BUNA-N
4	LEGS	STAINLESS STEEL
5	SPRING ASSISTED MECHANISM	STAINLESS STEEL
6	CLAMP ASSEMBLY	STAINLESS STEEL
7	RESTRAINER BASKET P/N L0001753	316 SS
8	FILTER BAG HOLD DOWN	316 SS
9	1" VENT VALVE ASSY.	316 SS
10	SPINDLE BOLT	SA193-B7 NEDOX COATED
11	SPINDLE HAND WHEEL	ALUMINUM (BLACK COATED)

#### NOTES:

1. UNITS ARE DESIGNED, FABRICATED & U STAMPED IN ACCORDANCE WITH ASME SECT. VIII, DIV. 1 BOILER & PRESSURE VESSEL CODE, IN COMPLIANCE TO LATEST ADDENDA.
2. INLET/OUTLET FLANGE CONNECTIONS PER ANSI B16.5
3. DESIGN PRESSURE: 150 PSIG @ 250°F (10.3 BAR @ 121.1°C)
4. DIMENSIONS SHOWN IN [ ] ARE IN MILLIMETERS AND FOR REFERENCE ONLY. ACCEPTANCE OF THIS PART WILL BE BASED ON "INCH" UNITS & TOLERANCES ONLY.
5. ALL BOLT HOLES STRADDLE NATURAL CENTERLINE.
6. APPROX. WEIGHT (DRY): 970 lbs. (439 kgs.)
7. APPROX. SHIPPING WEIGHT 1100 lbs. (498 kgs.)

TOLERANCES (UNLESS OTHERWISE SPECIFIED)	
DECIMAL:	.X $\pm$ .030 .XX $\pm$ .010 .XXX $\pm$ .005
FRACTIONAL:	$\pm$ 1/16
NOZZLE $\phi$ TO FLOOR:	$\frac{3}{8}$ " < 4" > $\frac{1}{2}$ "
FACE TO FACE:	$\frac{3}{8}$ " < 4" > $\frac{1}{2}$ "
ANGULAR:	$\pm$ 1°
FLANGES (H/V):	$\pm$ .005
VESSEL OVERALL HT:	1"

BOLT HOLES MUST STRADDLE  $\phi$   
MACHINED PARTS TO BE FREE OF BURRS  
FOR ADDITIONAL TOLERANCE DETAILS  
REF. ES-211, ES-222 AND ES-223

REVIEWED FOR CLASSIFICATION PER PR-4  
CRITICAL SIGNIFICANT

CUSTOMER INFO	
NAME	
P.O. NO.	
S.O. NO.	
QUANTITY	
PART NO.	F3AV0800200

DRAWN BY	FJM
SCALE	AS DRAWN
RESTRICTION	RESTRICTION
SHEET	1 OF 1
PROJECTION	THIRD ANGLE

VESSEL CODE: VMBF-0802-AB10-080A-UT-11SE

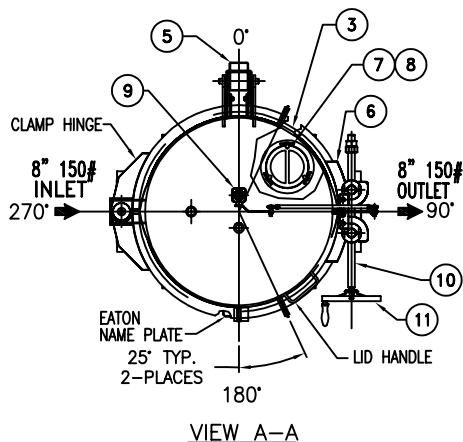


EATON FILTRATION, LLC  
DESIGN CENTER  
TINTON FALLS, NEW JERSEY, USA • PORTAGE, MICHIGAN, USA

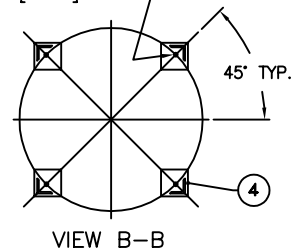
TITLE MAXILINE (VMBF-0802) FILTER VESSEL  
8" 150# RF INLET/ TANGENTIAL OUTLET  
SPINDLE TYPE-SE IN-LINE MAT'L. SS-316

DATE	02/26/03	SIZE	A	DWG FILENAME	SE0808TS	REV	F
------	----------	------	---	--------------	----------	-----	---

EATON CORPORATION - CONFIDENTIAL AND PROPRIETARY NOTICE TO PERSONS RECEIVING THIS DRAWING AND/OR TECHNICAL INFORMATION  
THIS DOCUMENT, INCLUDING THE DRAWING AND INFORMATION CONTAINED THEREON IS CONFIDENTIAL AND IS THE EXCLUSIVE PROPERTY OF EATON AT ANY TIME, BY TAKING THE  
POSSESSION OF THIS DOCUMENT THE RECIPIENT ACKNOWLEDGES AND AGREES THAT THIS DOCUMENT CANNOT BE USED IN ANY MANNER ADVERSE TO THE INTEREST OF EATON AND  
THAT NO PORTION OF THIS DRAWING MAY BE COPIED OR OTHERWISE REPRODUCED WITHOUT THE PRIOR WRITTEN CONSENT OF EATON. IN THE CASE OF CONFLICTION CONTRACTUAL  
PROVISIONS, THIS NOTICE SHALL GOVERN THE STATUS OF THIS DOCUMENT.  
2013 EATON CORPORATION - ALL RIGHTS RESERVED.

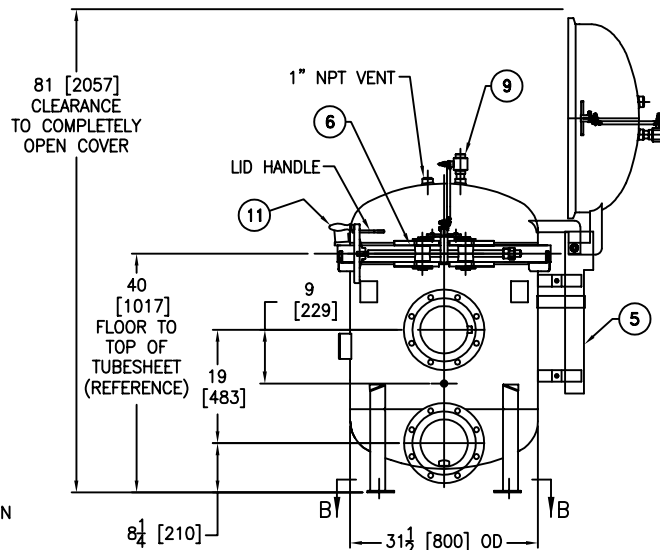
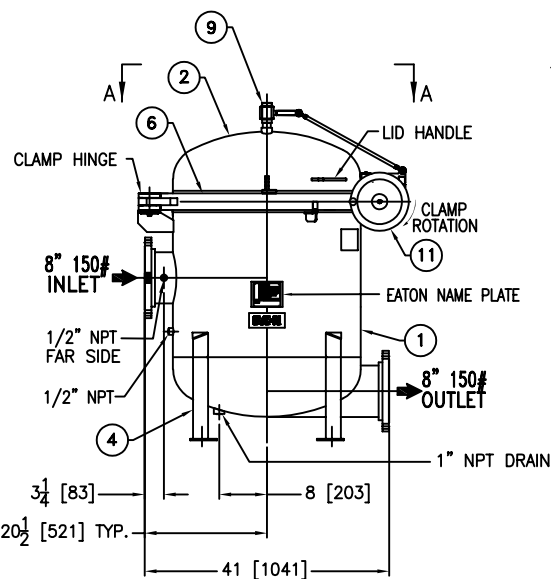


(4) .75 [19.0] Ø BOLT HOLES  
LOCATED ON 30.71 [780.0] B.C.D.



REVISIONS				
REV	DESCRIPTION	BY	ECO	DATE
D	UPDATED DRAWING	FJM	0087974	08/05/13

ITEM	PART NAME	MATERIAL
1	BODY	SA240-304/304L
2	COVER	SA240-304/304L
3	O-RING P/N L0000293	BUNA-N
4	LEGS	STAINLESS STEEL
5	SPRING ASSISTED MECHANISM	STAINLESS STEEL
6	CLAMP ASSEMBLY	STAINLESS STEEL
7	RESTRAINER BASKET P/N L0001753	316 SS
8	FILTER BAG HOLD DOWN	316 SS
9	1" VENT VALVE ASSY.	316 SS
10	SPINDLE BOLT	SA193-B7 NEDOX COATED
11	SPINDLE HAND WHEEL	ALUMINUM (BLACK COATED)



#### NOTES:

1. UNITS ARE DESIGNED, FABRICATED & U STAMPED IN ACCORDANCE WITH ASME SECT. VIII, DIV. 1 BOILER & PRESSURE VESSEL CODE, IN COMPLIANCE TO LATEST ADDENDA.
2. INLET/OUTLET FLANGE CONNECTIONS PER ANSI B16.5
3. DESIGN PRESSURE: 150 PSIG @ 250°F (10.3 BAR @ 121.1°C)
4. DIMENSIONS SHOWN IN [ ] ARE IN MILLIMETERS AND FOR REFERENCE ONLY. ACCEPTANCE OF THIS PART WILL BE BASED ON "INCH" UNITS & TOLERANCES ONLY.
5. ALL BOLT HOLES STRADDLE NATURAL CENTERLINE.
6. APPROX. WEIGHT (DRY): 970 lbs. (439 kgs.)
7. APPROX. SHIPPING WEIGHT 1100 lbs. (498 kgs.)

TOLERANCES (UNLESS OTHERWISE SPECIFIED)	
DECIMAL:	.X ± .030 .XX ± .010 .XXX ± .005
FRACTIONAL:	± 1/16 ± 1/32
NOZZLE Ø TO FLOOR:	1/8" < 4" > 1/4"
FACE TO FACE:	1/8" < 4" > 1/4"
ANGULAR:	± 1°
FLANGES (H/V):	± 1/2"
VESSEL OVERALL HT:	1"

BOLT HOLES MUST STRADDLE Ø  
MACHINED PARTS TO BE FREE OF BURRS  
FOR ADDITIONAL TOLERANCE DETAILS  
REF. ES-211, ES-222 AND ES-223

REVIEWED FOR CLASSIFICATION PER PR-4  
CRITICAL SIGNIFICANT

#### CUSTOMER INFO

NAME	
P.O. NO.	
S.O. NO.	
QUANTITY	
PART NO.	F3AV0800200-304

DRAWN BY	FJM
SCALE	AS DRAWN
RESTRICTION	RESTRICTION
SHEET	1 OF 1
PROJECTION	THIRD ANGLE

VESSEL CODE: VMBF-0802-BB10-080A-UT-11SE

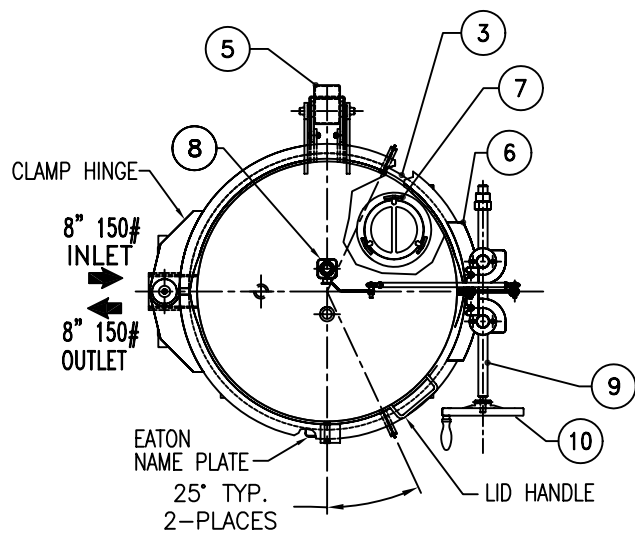


EATON FILTRATION, LLC  
DESIGN CENTER  
TINTON FALLS, NEW JERSEY, USA • PORTAGE, MICHIGAN, USA

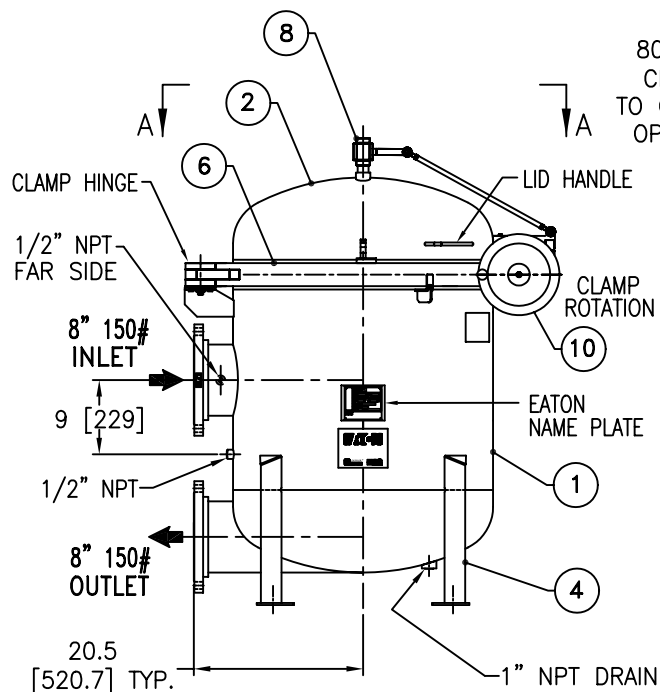
TITLE MAXILINE (VMBF-0802) FILTER VESSEL  
8" 150# RF INLET/ TANGENTIAL OUTLET  
SPINDLE TYPE-SE IN-LINE MAT'L. SS-304

DATE	06/20/06	SIZE	A	DWG FILENAME	SE0808TS304	REV	D
------	----------	------	---	--------------	-------------	-----	---

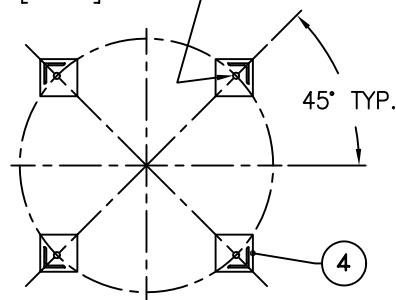
EATON CORPORATION - CONFIDENTIAL AND PROPRIETARY NOTICE TO PERSONS RECEIVING THIS DRAWING AND/OR TECHNICAL INFORMATION  
THIS DOCUMENT, INCLUDING THE DRAWING AND INFORMATION CONTAINED THEREON IS CONFIDENTIAL AND IS THE EXCLUSIVE PROPERTY OF EATON AT ANY TIME, BY TAKING THE POSSESSION OF THIS DOCUMENT THE RECIPIENT ACKNOWLEDGES AND AGREES THAT THIS DOCUMENT CANNOT BE USED IN ANY MANNER ADVERSE TO THE INTEREST OF EATON AND THAT NO PORTION OF THIS DRAWING MAY BE COPIED OR OTHERWISE REPRODUCED WITHOUT THE PRIOR WRITTEN CONSENT OF EATON. IN THE CASE OF CONFLICTION CONTRACTUAL PROVISIONS, THIS NOTICE SHALL GOVERN THE STATUS OF THIS DOCUMENT.  
2013 EATON CORPORATION - ALL RIGHTS RESERVED.



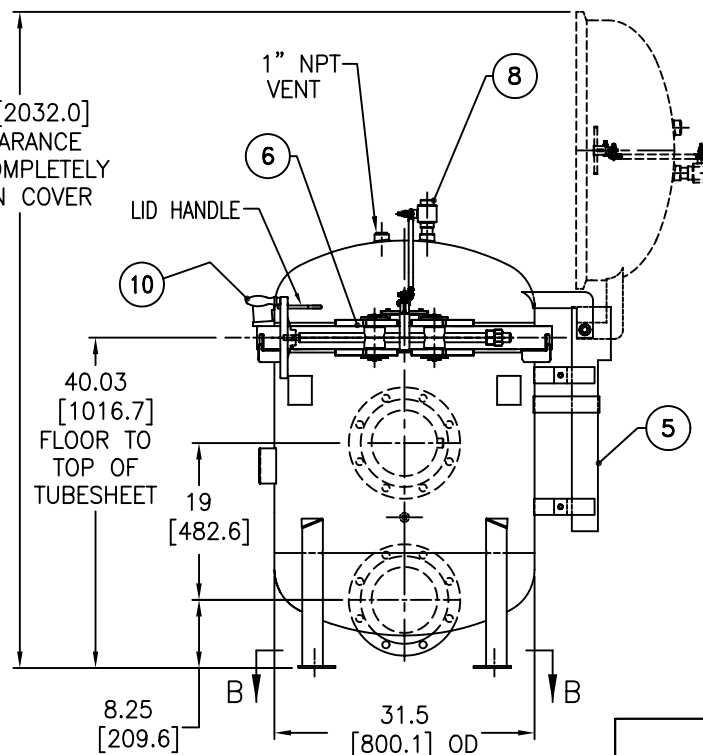
VIEW A-A



(4) .75 [19.0] Ø BOLT HOLES  
LOCATED ON 30.71 [780.0] B.C.D.



VIEW B-B



ITEM	PART NAME	MATERIAL
1	BODY	SA240-304/304L
2	COVER	SA240-304/304L
3	O-RING	BUNA-N
4	LEGS	STAINLESS STEEL
5	SPRING ASSISTED MECHANISM	STAINLESS STEEL
6	CLAMP ASSEMBLY	STAINLESS STEEL
7	FILTER BAG HOLD DOWN	304 SS
8	1" VENT VALVE ASSY.	304 SS
9	SPINDLE BOLT	SA193-B7 NEDOX COATED
10	SPINDLE HANDLE	ALUMINUM (BLACK COATED)

### NOTES:

1. UNITS ARE DESIGNED, FABRICATED & U STAMPED IN ACCORDANCE WITH ASME SECT. VIII, DIV. 1 BOILER & PRESSURE VESSEL CODE, IN COMPLIANCE TO LATEST ADDENDA.
2. INLET/OUTLET FLANGE CONNECTIONS PER ANSI B16.5
3. DESIGN PRESSURE: 150 PSIG @ 250°F (10.3 BAR @ 121.1°C)
4. ALL DIMENSIONS ARE IN INCHES / [mm]
5. ALL BOLT HOLES STRADDLE NATURAL CENTERLINE.
6. APPROX. WEIGHT (DRY): 970 lbs. (439 kgs.)
6. APPROX. SHIPPING WEIGHT 1100 lbs. (498 kgs.)

CERTIFIED FOR:

P.O. NO.:

REG. NO.:

QUOTE NO.:

TAG NO.:

VESSEL CODE: V-MBF-0802-BB10-080A-UT-11SE-LOOP

PART NUMBER: F3AV0800200L304

**EATON**

**EATON FILTRATION, LLC**

900 FAIRMOUNT AVENUE, ELIZABETH, NEW JERSEY 07207

NAME **8" MBF-0802 FILTER VESSEL  
8"-150# INLET/TANGENTIAL OUTLET  
SPINDLE TYPE-SE (SS-304)**

DRAWN FJM DATE 06/20/06 CERT. LH DATE 06/20/06

SIZE A DWG NO

SE0808TSL304

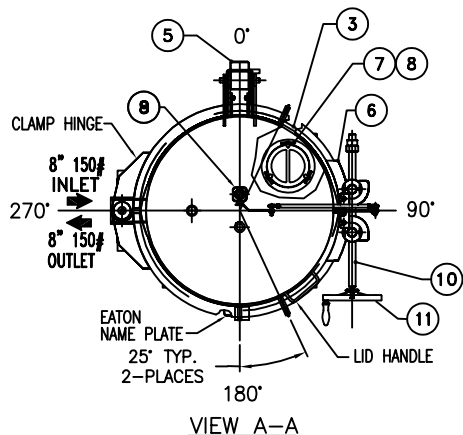
REV A

ELECTRONIC FILE NAME: SE0808TSL304.DWG

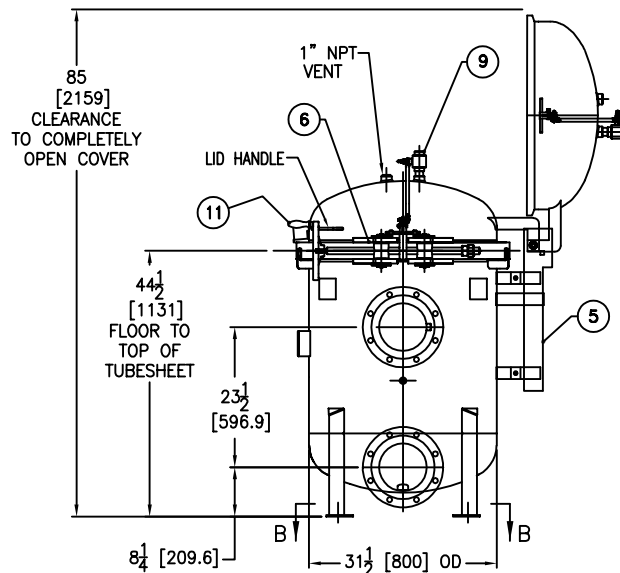
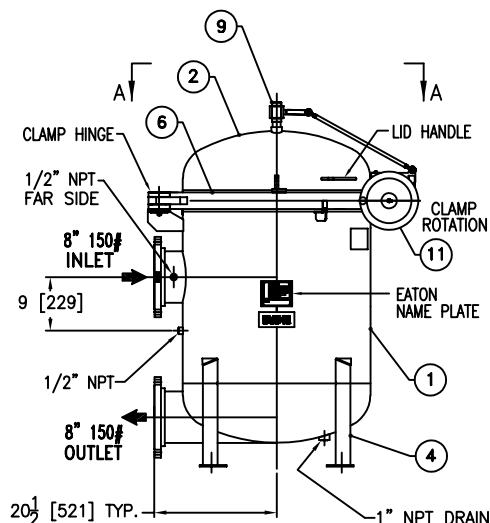
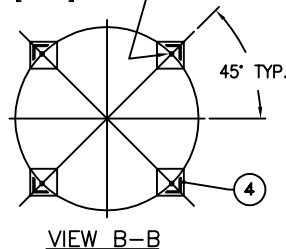
REF. ECR E023 DATE 06/20/06

UNAUTHORIZED USE, MANUFACTURE OR REPRODUCTION IN WHOLE OR IN PART IS PROHIBITED. DRAWING, DESIGN AND OTHER DISCLOSURES PROPERTY OF EATON FILTRATION, LLC





(4) .75 [19.0] Ø BOLT HOLES  
LOCATED ON 30.71 [780.0] B.C.D.



#### NOTES:

1. UNITS ARE DESIGNED, FABRICATED & U STAMPED IN ACCORDANCE WITH ASME SECT. VIII, DIV. 1 BOILER & PRESSURE VESSEL CODE, IN COMPLIANCE TO LATEST ADDENDA.
2. INLET/OUTLET FLANGE CONNECTIONS PER ANSI B16.5
3. DESIGN PRESSURE: 150 PSIG @ 250°F (10.3 BAR @ 121.1°C)
4. DIMENSIONS SHOWN IN [ ] ARE IN MILLIMETERS AND FOR REFERENCE ONLY. ACCEPTANCE OF THIS PART WILL BE BASED ON "INCH" UNITS & TOLERANCES ONLY.
5. ALL BOLT HOLES STRADDLE NATURAL CENTERLINE.
6. APPROX. WEIGHT (DRY): 1005 lbs. (455 kgs.)
7. APPROX. SHIPPING WEIGHT 1135 lbs. (515 kgs.)

#### REVISIONS

REV	DESCRIPTION	BY	ECO	DATE
E	UPDATED DRAWING	FJM	0084014	04/11/13

ITEM	PART NAME	MATERIAL
1	BODY	SA240-316/316L
2	COVER	SA240-316/316L
3	O-RING P/N L0000293	BUNA-N
4	LEGS	STAINLESS STEEL
5	SPRING ASSISTED MECHANISM	STAINLESS STEEL
6	CLAMP ASSEMBLY	STAINLESS STEEL
7	RESTRAINER BASKET P/N L0001753	316 SS
8	FILTER BAG HOLD DOWN	316 SS
9	1" VENT VALVE ASSY.	316 SS
10	SPINDLE BOLT	SA193-B7 NEDOX COATED
11	SPINDLE HANDLE	ALUMINUM (BLACK COATED)

#### TOLERANCES (UNLESS OTHERWISE SPECIFIED)

DECIMAL: .X ± .030  
.XX ± .010  
.XXX ± .005  
FRACTIONAL: ± 1/16  
NOZZLE Ø TO FLOOR: 1/8" < 4" > 1/4"  
FACE TO FACE: 1/8" < 4" > 1/4"  
ANGULAR: ± 1°  
FLANGES (H/V): ± 1/2"  
VESSEL OVERALL HT: 1"

BOLT HOLES MUST STRADDLE Ø  
MACHINED PARTS TO BE FREE OF BURRS  
FOR ADDITIONAL TOLERANCE DETAILS  
REF. ES-211, ES-222 AND ES-223

REVIEWED FOR CLASSIFICATION PER PR-4

CRITICAL SIGNIFICANT

#### CUSTOMER INFO

NAME	
P.O. NO.	
S.O. NO.	
QUANTITY	
PART NO.	F3AV0800200L

DRAWN BY	FJM
SCALE	AS DRAWN
RESTRICTION	RESTRICTION
SHEET	1 OF 1
PROJECTION	THIRD ANGLE

VESSEL CODE: VMBF-0802-AB10-080A-UT-11SE-LOOP

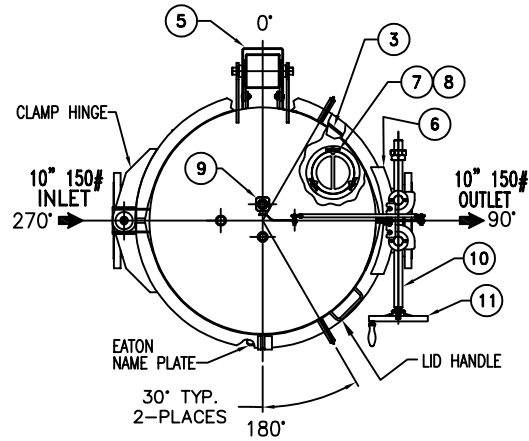
**EATON**

EATON FILTRATION, LLC  
DESIGN CENTER  
TINTON FALLS, NEW JERSEY, USA PORTAGE, MICHIGAN, USA

TITLE MAXILINE (VMBF-0802) FILTER VESSEL  
8" 150# RF INLET/ TANGENTIAL OUTLET  
SPINDLE TYPE-SE LOOP MAT'L SS-316

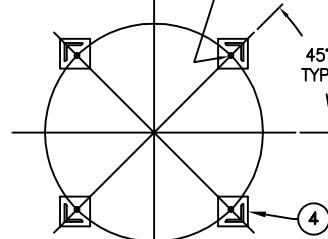
DATE	02/13/04	SIZE	A	DWG FILENAME	SE0808TSL	REV	E
------	----------	------	---	--------------	-----------	-----	---

EATON CORPORATION - CONFIDENTIAL AND PROPRIETARY NOTICE TO PERSONS RECEIVING THIS DRAWING AND/OR TECHNICAL INFORMATION  
THIS DOCUMENT, INCLUDING THE DRAWING AND INFORMATION CONTAINED THEREON IS CONFIDENTIAL AND IS THE EXCLUSIVE PROPERTY OF EATON AT ANY TIME, BY TAKING THE  
POSSESSION OF THIS DOCUMENT THE RECIPIENT ACKNOWLEDGES AND AGREES THAT THIS DOCUMENT CANNOT BE USED IN ANY MANNER ADVERSE TO THE INTEREST OF EATON AND  
THAT NO PORTION OF THIS DRAWING MAY BE COPIED OR OTHERWISE REPRODUCED WITHOUT THE PRIOR WRITTEN CONSENT OF EATON. IN THE CASE OF CONFLICTION CONTRACTUAL  
PROVISIONS, THIS NOTICE SHALL GOVERN THE STATUS OF THIS DOCUMENT.  
2013 EATON CORPORATION - ALL RIGHTS RESERVED.



VIEW A-A

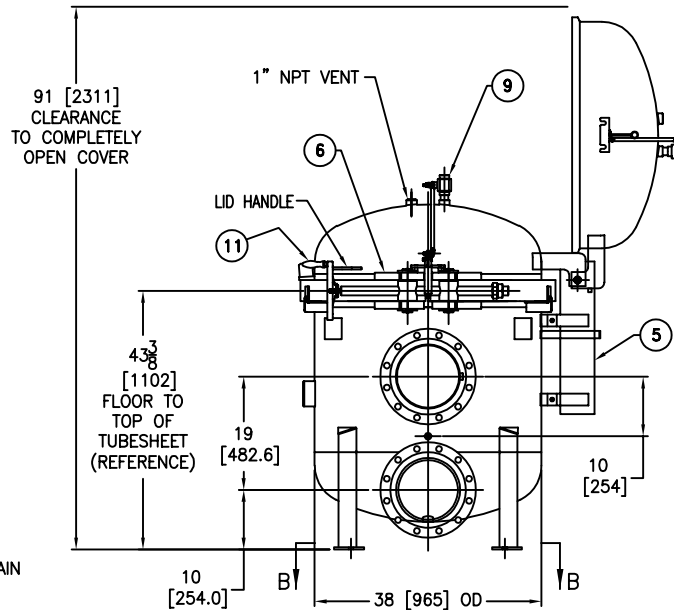
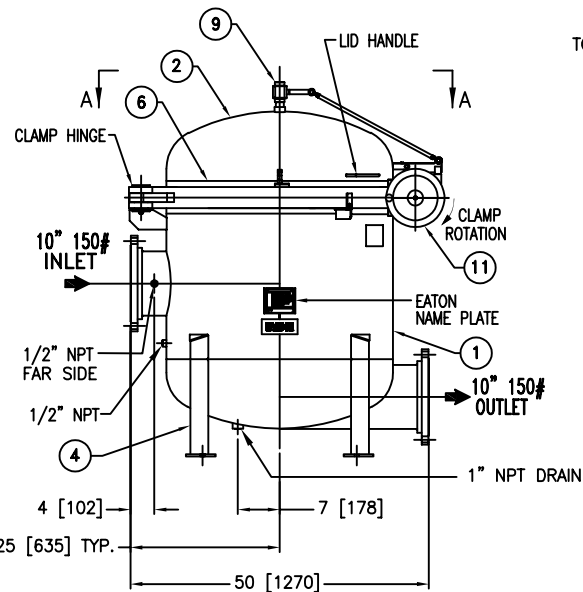
(4) .875 [22.2] Ø BOLT HOLES  
LOCATED ON 36.5 [927.1] B.C.D.



VIEW B-B

REVISIONS				
REV	DESCRIPTION	BY	ECO	DATE
F	UPDATED DRAWING	FJM	0087974	08/02/13

ITEM	PART NAME	MATERIAL
1	BODY	SA240-316/316L
2	COVER	SA240-316/316L
3	O-RING P/N L0000293	BUNA-N
4	LEGS	STAINLESS STEEL
5	SPRING ASSISTED MECHANISM	STAINLESS STEEL
6	CLAMP ASSEMBLY	STAINLESS STEEL
7	RESTRAINER BASKET P/N L0001753	316 SS
8	FILTER BAG HOLD DOWN	316 SS
9	1" VENT VALVE ASSY.	316 SS
10	SPINDLE BOLT	SA193-B7 NEDOX COATED
11	SPINDLE HAND WHEEL	ALUMINUM (BLACK COATED)



#### NOTES:

1. UNITS ARE DESIGNED, FABRICATED & U STAMPED IN ACCORDANCE WITH ASME SECT. VIII, DIV. 1 BOILER & PRESSURE VESSEL CODE, IN COMPLIANCE TO LATEST ADDENDA.
2. INLET/OUTLET FLANGE CONNECTIONS PER ANSI B16.5
3. DESIGN PRESSURE: 150 PSIG @ 250°F (10.3 BAR @ 121.1°C)
4. DIMENSIONS SHOWN IN [ ] ARE IN MILLIMETERS AND FOR REFERENCE ONLY. ACCEPTANCE OF THIS PART WILL BE BASED ON "INCH" UNITS & TOLERANCES ONLY.
5. ALL BOLT HOLES STRADDLE NATURAL CENTERLINE.
6. APPROX. WEIGHT (DRY): 1050 lbs. (476 kgs.)
7. APPROX. SHIPPING WEIGHT 1190 lbs. (539 kgs.)

TOLERANCES (UNLESS OTHERWISE SPECIFIED)	
DECIMAL:	.X ± .030 .XX ± .010 .XXX ± .005
FRACTIONAL:	± 1/16
NOZZLE Ø TO FLOOR:	1/8" < 4" > 1/4"
FACE TO FACE:	1/8" < 4" > 1/4"
ANGULAR:	± 1°
FLANGES (H/V):	± 1/2"
VESSEL OVERALL HT:	1"

BOLT HOLES MUST STRADDLE Ø  
MACHINED PARTS TO BE FREE OF BURRS  
FOR ADDITIONAL TOLERANCE DETAILS  
REF. ES-211, ES-222 AND ES-223

REVIEWED FOR CLASSIFICATION PER PR-4  
CRITICAL SIGNIFICANT

#### CUSTOMER INFO

NAME	
P.O. NO.	
S.O. NO.	
QUANTITY	
PART NO.	F3AV1000200

DRAWN BY	FJM
SCALE	AS DRAWN
RESTRICTION	RESTRICTION
SHEET	1 OF 1
PROJECTION	THIRD ANGLE

EATON CORPORATION - CONFIDENTIAL AND PROPRIETARY NOTICE TO PERSONS RECEIVING THIS DRAWING AND/OR TECHNICAL INFORMATION  
THIS DOCUMENT, INCLUDING THE DRAWING AND INFORMATION CONTAINED THEREON IS CONFIDENTIAL AND IS THE EXCLUSIVE PROPERTY OF EATON AT ANY TIME, BY TAKING THE  
POSSESSION OF THIS DOCUMENT THE RECIPIENT ACKNOWLEDGES AND AGREES THAT THIS DOCUMENT CANNOT BE USED IN ANY MANNER ADVERSE TO THE INTEREST OF EATON AND  
THAT NO PORTION OF THIS DRAWING MAY BE COPIED OR OTHERWISE REPRODUCED WITHOUT THE PRIOR WRITTEN CONSENT OF EATON. IN THE CASE OF CONFLICT CONTRACTUAL  
PROVISIONS, THIS NOTICE SHALL GOVERN THE STATUS OF THIS DOCUMENT.  
2013 EATON CORPORATION - ALL RIGHTS RESERVED.

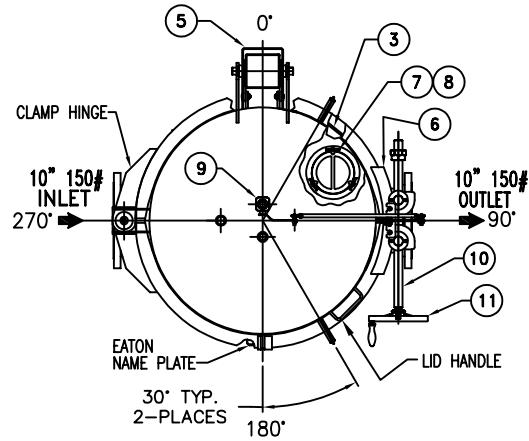
VESSEL CODE: VMBF-1002-AB10-100A-UT-11SE

**EATON**

EATON FILTRATION, LLC  
DESIGN CENTER  
TINTON FALLS, NEW JERSEY, USA • PORTAGE, MICHIGAN, USA

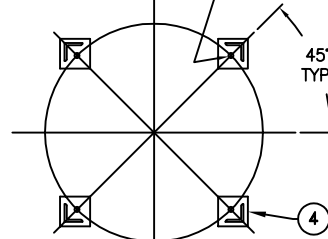
TITLE MAXILINE (VMBF-1002) FILTER VESSEL  
10" 150# RF INLET/ TANGENTIAL OUTLET  
SPINDLE TYPE-SE IN-LINE MAT'L. SS-316

DATE 03/18/03 SIZE A DWG FILENAME SE1010TS REV F



VIEW A-A

(4) .875 [22.2] Ø BOLT HOLES  
LOCATED ON 36.5 [927.1] B.C.D.



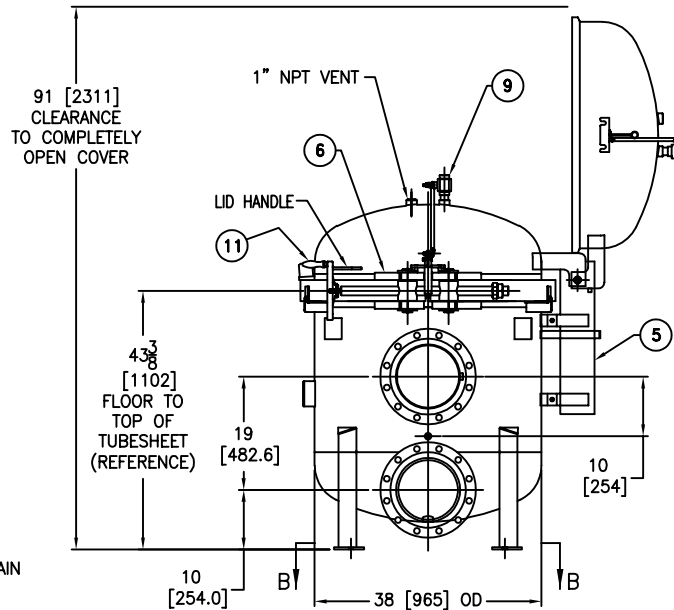
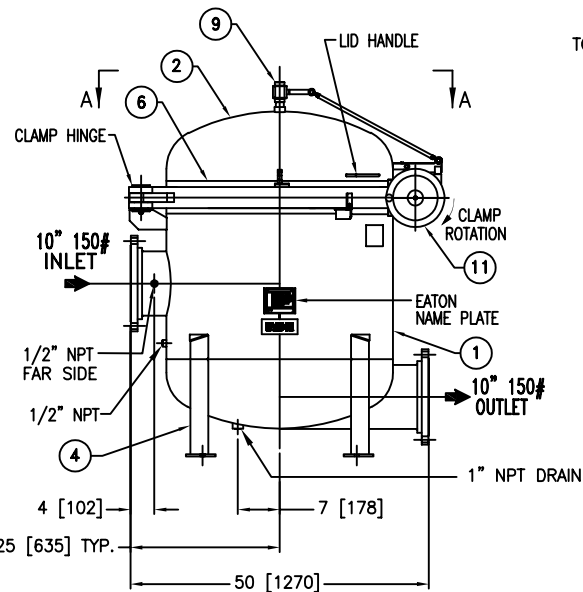
VIEW B-B

REVISIONS				
REV	DESCRIPTION	BY	ECO	DATE
C	UPDATED DRAWING	FJM	0087974	08/05/13

ITEM	PART NAME	MATERIAL
1	BODY	SA240-304/304L
2	COVER	SA240-304/304L
3	O-RING P/N L0000293	BUNA-N
4	LEGS	STAINLESS STEEL
5	SPRING ASSISTED MECHANISM	STAINLESS STEEL
6	CLAMP ASSEMBLY	STAINLESS STEEL
7	RESTRAINER BASKET P/N L0001753	316 SS
8	FILTER BAG HOLD DOWN	316 SS
9	1" VENT VALVE ASSY.	316 SS
10	SPINDLE BOLT	SA193-B7 NEDOX COATED
11	SPINDLE HAND WHEEL	ALUMINUM (BLACK COATED)

#### NOTES:

1. UNITS ARE DESIGNED, FABRICATED & U STAMPED IN ACCORDANCE WITH ASME SECT. VIII, DIV. 1 BOILER & PRESSURE VESSEL CODE, IN COMPLIANCE TO LATEST ADDENDA.
2. INLET/OUTLET FLANGE CONNECTIONS PER ANSI B16.5
3. DESIGN PRESSURE: 150 PSIG @ 250°F (10.3 BAR @ 121.1°C)
4. DIMENSIONS SHOWN IN [ ] ARE IN MILLIMETERS AND FOR REFERENCE ONLY. ACCEPTANCE OF THIS PART WILL BE BASED ON "INCH" UNITS & TOLERANCES ONLY.
5. ALL BOLT HOLES STRADDLE NATURAL CENTERLINE.
6. APPROX. WEIGHT (DRY): 1050 lbs. (476 kgs.)
7. APPROX. SHIPPING WEIGHT 1190 lbs. (539 kgs.)



VESSEL CODE: VMBF-1002-BB10-100A-UT-11SE

DRAWN BY	FJM
SCALE	AS DRAWN
RESTRICTION	RESTRICTION
SHEET	1 OF 1
PROJECTION	THIRD ANGLE

**EATON** EATON FILTRATION, LLC  
DESIGN CENTER  
TINTON FALLS, NEW JERSEY, USA • PORTAGE, MICHIGAN, USA

TITLE MAXILINE (VMBF-1002) FILTER VESSEL  
10" 150# RF INLET/ TANGENTIAL OUTLET  
SPINDLE TYPE-SE IN-LINE MAT'L. SS-304

DATE 06/20/06 SIZE A DWG FILENAME SE1010TS304 REV C

EATON CORPORATION - CONFIDENTIAL AND PROPRIETARY NOTICE TO PERSONS RECEIVING THIS DRAWING AND/OR TECHNICAL INFORMATION  
THIS DOCUMENT, INCLUDING THE DRAWING AND INFORMATION CONTAINED THEREON IS CONFIDENTIAL AND IS THE EXCLUSIVE PROPERTY OF EATON AT ANY TIME, BY TAKING THE  
POSSESSION OF THIS DOCUMENT THE RECIPIENT ACKNOWLEDGES AND AGREES THAT THIS DOCUMENT CANNOT BE USED IN ANY MANNER ADVERSE TO THE INTEREST OF EATON AND  
THAT NO PORTION OF THIS DRAWING MAY BE COPIED OR OTHERWISE REPRODUCED WITHOUT THE PRIOR WRITTEN CONSENT OF EATON. IN THE CASE OF CONFLICT CONTRACTUAL  
PROVISIONS, THIS NOTICE SHALL GOVERN THE STATUS OF THIS DOCUMENT.  
2013 EATON CORPORATION - ALL RIGHTS RESERVED.

#### CUSTOMER INFO

NAME	
P.O. NO.	
S.O. NO.	
QUANTITY	
PART NO.	F3AV1000200-304

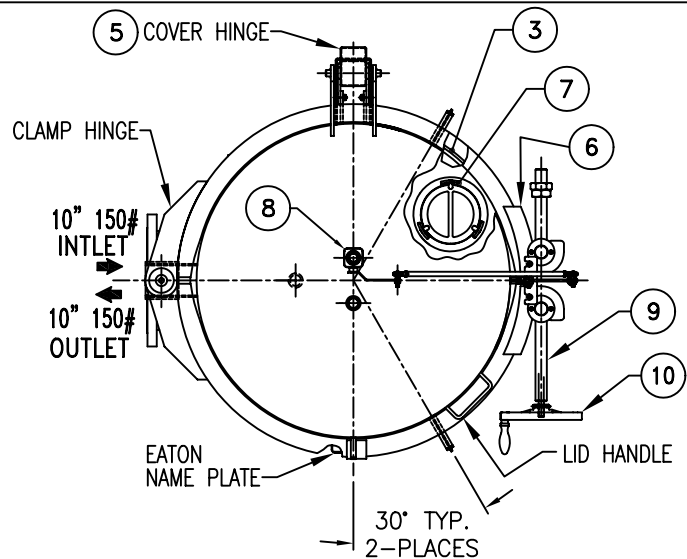
#### TOLERANCES (UNLESS OTHERWISE SPECIFIED)

DECIMAL:	.X ± .030 .XX ± .010 .XXX ± .005
FRACTIONAL:	± 1/16
NOZZLE Ø TO FLOOR:	1/8" < 4" > ± 1/4"
FACE TO FACE:	1/8" < 4" > ± 1/4"
ANGULAR:	± 1°
FLANGES (H/V):	± 1/2"
VESSEL OVERALL HT:	1"

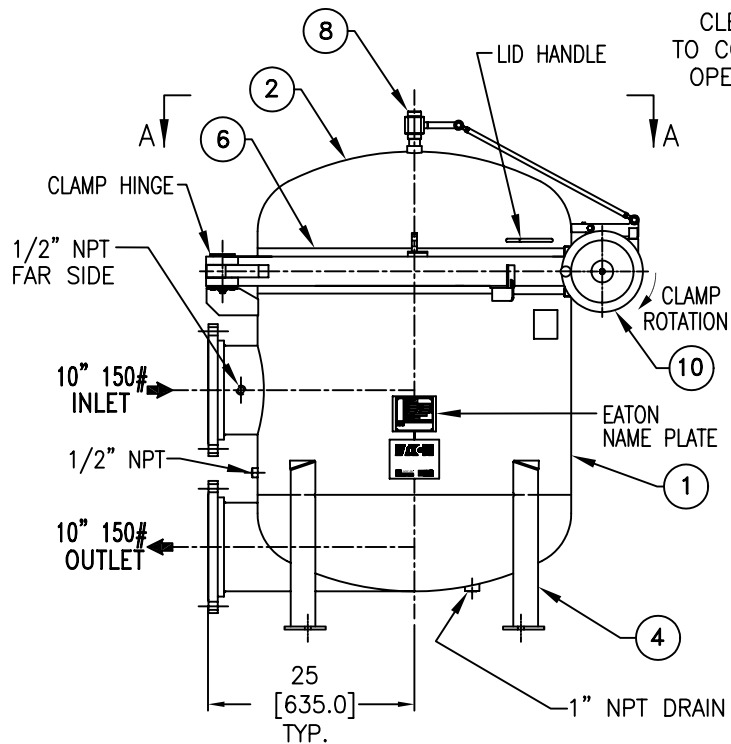
BOLT HOLES MUST STRADDLE Ø  
MACHINED PARTS TO BE FREE OF BURRS  
FOR ADDITIONAL TOLERANCE DETAILS  
REF. ES-211, ES-222 AND ES-223

REVIEWED FOR CLASSIFICATION PER PR-4

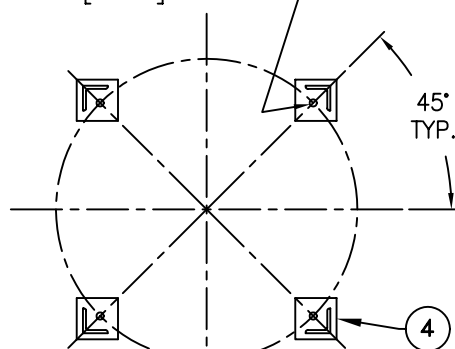
CRITICAL SIGNIFICANT



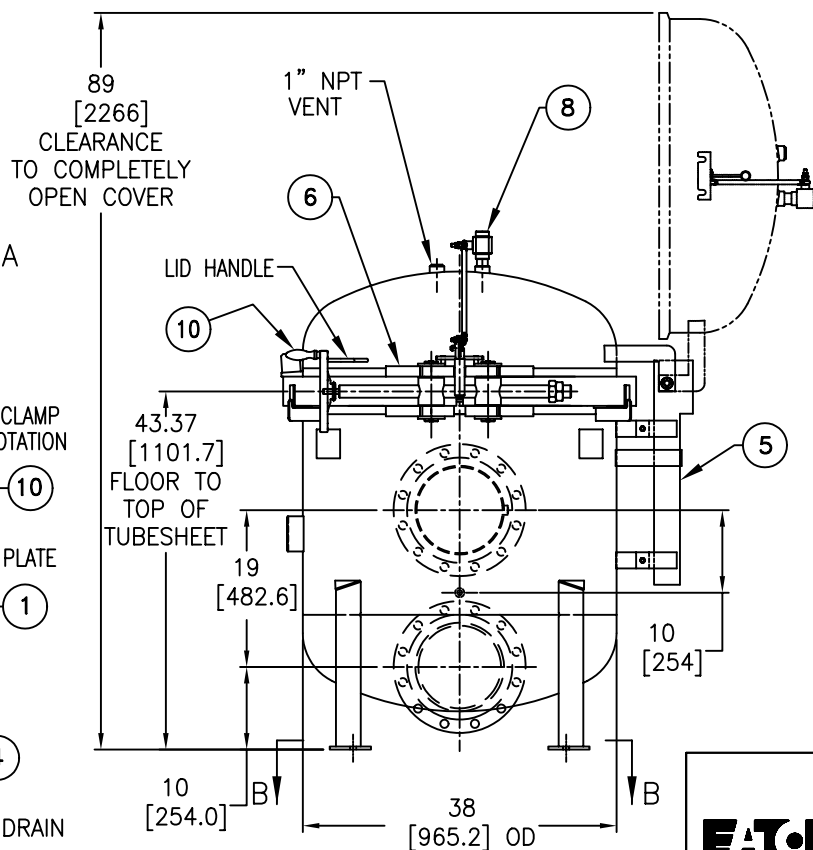
VIEW A-A



(4) .875 [22.2]  $\phi$  BOLT HOLES  
LOCATED ON 36.5 [927.1] B.C.D.



VIEW B-B



ITEM	PART NAME	MATERIAL
1	BODY	SA240-304/304L
2	COVER	SA240-304/304L
3	O-RING	BUNA-N
4	LEGS	STAINLESS STEEL
5	SPRING ASSISTED MECHANISM	STAINLESS STEEL
6	CLAMP ASSEMBLY	STAINLESS STEEL
7	FILTER BAG HOLD DOWN	304 SS
8	1" VENT VALVE ASSY.	304 SS
9	SPINDLE BOLT	SA193-B7 NEDOX COATED
10	SPINDLE HANDLE	ALUMINUM

### NOTES:

- UNITS ARE DESIGNED, FABRICATED & U STAMPED IN ACCORDANCE WITH ASME SECT. VIII, DIV. 1 BOILER & PRESSURE VESSEL CODE, IN COMPLIANCE TO LATEST ADDENDA.
- INLET/OUTLET FLANGE CONNECTIONS PER ANSI B16.5
- DESIGN PRESSURE: 150 PSIG @ 250°F  
(10.3 BAR @ 121.1°C)
- ALL DIMENSIONS ARE IN INCHES / [mm]
- ALL BOLT HOLES STRADDLE NATURAL CENTERLINE.
- APPROX. WEIGHT (DRY): 1050 lbs. (476 kgs.)
- APPROX. SHIPPING WEIGHT 1190 lbs. (539 kgs.)

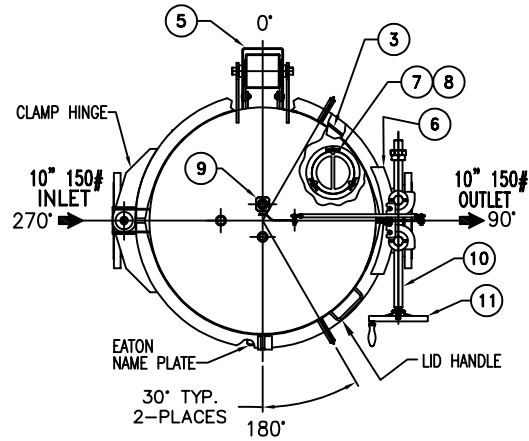
### CERTIFIED FOR:

P.O. NO.:  
REG. NO.:  
QUOTE NO.:  
TAG NO.:  
VESSEL CODE: V-MBF-1002-BB10-100A-UT-11SE-LOOP  
PART NUMBER: F3AV1000200L304

		<b>EATON FILTRATION, LLC</b> 900 FAIRMOUNT AVENUE, ELIZABETH, NEW JERSEY 07207	
		NAME 10" MBF-1002 FILTER VESSEL 10"-150# INLET/TANGENTIAL OUTLET SPINDLE TYPE-SE (SS-304)	
DRAWN	FJM	DATE	06/20/06
SIZE	DWG NO	DATE	06/20/06
A		SE1010TSL304	A

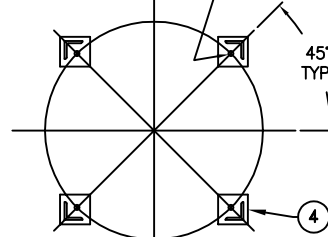
ELECTRONIC FILE NAME: SE1010TSL304.DWG  
REF. ECR E023 DATE 06/20/06

UNAUTHORIZED USE, MANUFACTURE OR REPRODUCTION IN WHOLE OR IN PART IS PROHIBITED. DRAWING, DESIGN AND OTHER DISCLOSURES PROPERTY OF EATON FILTRATION, LLC



VIEW A-A

(4) .875 [22.2] Ø BOLT HOLES  
LOCATED ON 36.5 [927.1] B.C.D.



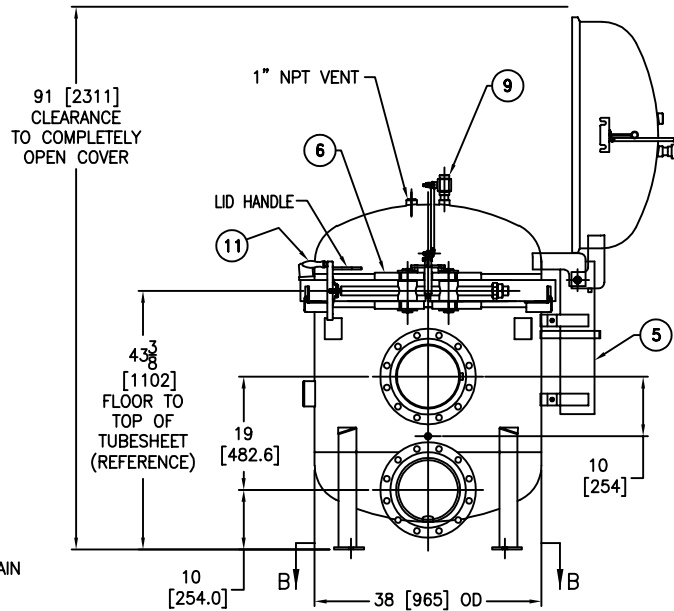
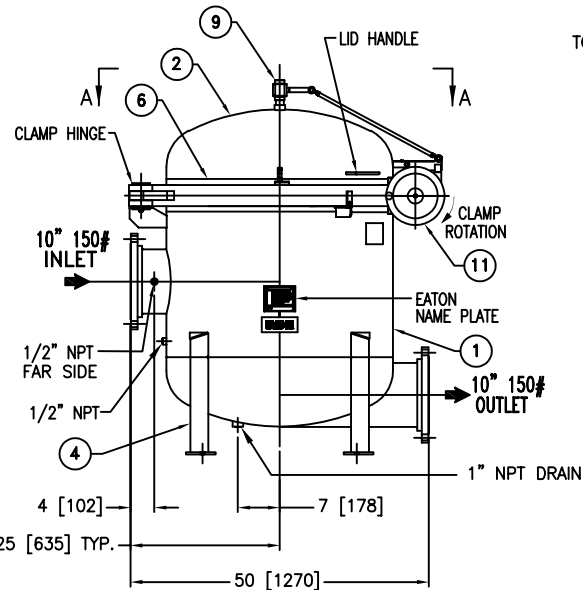
VIEW B-B

REVISIONS				
REV	DESCRIPTION	BY	ECO	DATE
C	UPDATED DRAWING	FJM	0087974	08/05/13

ITEM	PART NAME	MATERIAL
1	BODY	SA240-304/304L
2	COVER	SA240-304/304L
3	O-RING P/N L0000293	BUNA-N
4	LEGS	STAINLESS STEEL
5	SPRING ASSISTED MECHANISM	STAINLESS STEEL
6	CLAMP ASSEMBLY	STAINLESS STEEL
7	RESTRAINER BASKET P/N L0001753	316 SS
8	FILTER BAG HOLD DOWN	316 SS
9	1" VENT VALVE ASSY.	316 SS
10	SPINDLE BOLT	SA193-B7 NEDOX COATED
11	SPINDLE HAND WHEEL	ALUMINUM (BLACK COATED)

#### NOTES:

1. UNITS ARE DESIGNED, FABRICATED & U STAMPED IN ACCORDANCE WITH ASME SECT. VIII, DIV. 1 BOILER & PRESSURE VESSEL CODE, IN COMPLIANCE TO LATEST ADDENDA.
2. INLET/OUTLET FLANGE CONNECTIONS PER ANSI B16.5
3. DESIGN PRESSURE: 150 PSIG @ 250°F (10.3 BAR @ 121.1°C)
4. DIMENSIONS SHOWN IN [ ] ARE IN MILLIMETERS AND FOR REFERENCE ONLY. ACCEPTANCE OF THIS PART WILL BE BASED ON "INCH" UNITS & TOLERANCES ONLY.
5. ALL BOLT HOLES STRADDLE NATURAL CENTERLINE.
6. APPROX. WEIGHT (DRY): 1070 lbs. (485 kgs.)
7. APPROX. SHIPPING WEIGHT 1210 lbs. (548 kgs.)



VESSEL CODE: VMBF-1202-BB10-100A-UT-11SE

DRAWN BY	FJM
SCALE	AS DRAWN
RESTRICTION	RESTRICTION
SHEET	1 OF 1
PROJECTION	THIRD ANGLE

**EATON** EATON FILTRATION, LLC  
DESIGN CENTER  
TINTON FALLS, NEW JERSEY, USA • PORTAGE, MICHIGAN, USA

TITLE MAXILINE (VMBF-1202) FILTER VESSEL  
10" 150# RF INLET/ TANGENTIAL OUTLET  
SPINDLE TYPE-SE IN-LINE MAT'L. SS-304

DATE 06/20/06 SIZE A DWG FILENAME SE1210TS304 REV C

EATON CORPORATION - CONFIDENTIAL AND PROPRIETARY NOTICE TO PERSONS RECEIVING THIS DRAWING AND/OR TECHNICAL INFORMATION  
THIS DOCUMENT, INCLUDING THE DRAWING AND INFORMATION CONTAINED THEREON IS CONFIDENTIAL AND IS THE EXCLUSIVE PROPERTY OF EATON AT ANY TIME, BY TAKING THE  
POSSESSION OF THIS DOCUMENT THE RECIPIENT ACKNOWLEDGES AND AGREES THAT THIS DOCUMENT CANNOT BE USED IN ANY MANNER ADVERSE TO THE INTEREST OF EATON AND  
THAT NO PORTION OF THIS DRAWING MAY BE COPIED OR OTHERWISE REPRODUCED WITHOUT THE PRIOR WRITTEN CONSENT OF EATON. IN THE CASE OF CONFLICT OF CONTRACTUAL  
PROVISIONS, THIS NOTICE SHALL GOVERN THE STATUS OF THIS DOCUMENT.  
2013 EATON CORPORATION - ALL RIGHTS RESERVED.

#### CUSTOMER INFO

NAME	
P.O. NO.	
S.O. NO.	
QUANTITY	
PART NO.	F3AV1200200-304

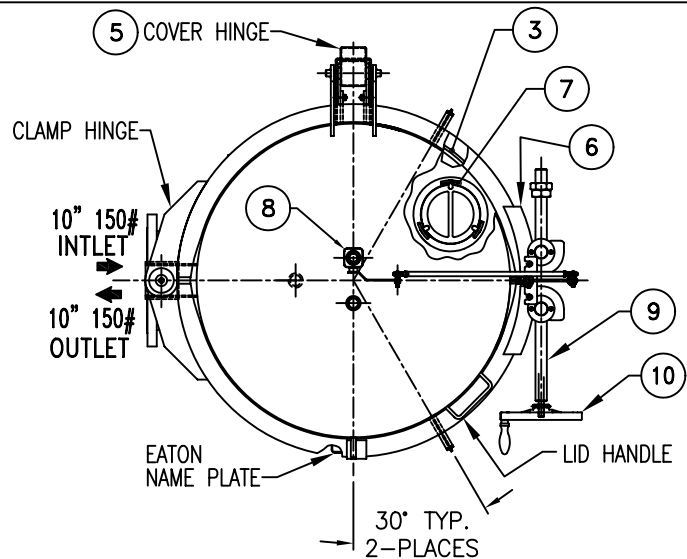
#### TOLERANCES (UNLESS OTHERWISE SPECIFIED)

DECIMAL:	.X ± .030 .XX ± .010 .XXX ± .005
FRACTIONAL:	± 1/16
NOZZLE Ø TO FLOOR:	1/8" < 4" > ± 1/4"
FACE TO FACE:	1/8" < 4" > ± 1/4"
ANGULAR:	± 1°
FLANGES (H/V):	± 1/2"
VESSEL OVERALL HT:	1"

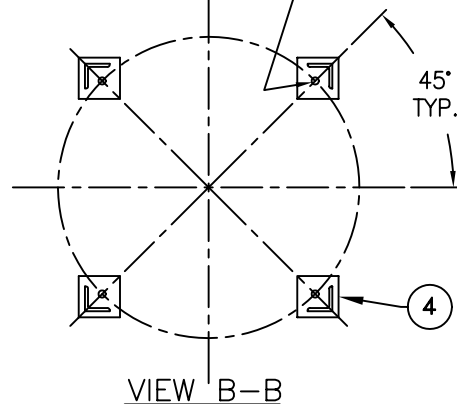
BOLT HOLES MUST STRADDLE Ø  
MACHINED PARTS TO BE FREE OF BURRS  
FOR ADDITIONAL TOLERANCE DETAILS  
REF. ES-211, ES-222 AND ES-223

REVIEWED FOR CLASSIFICATION PER PR-4

CRITICAL SIGNIFICANT



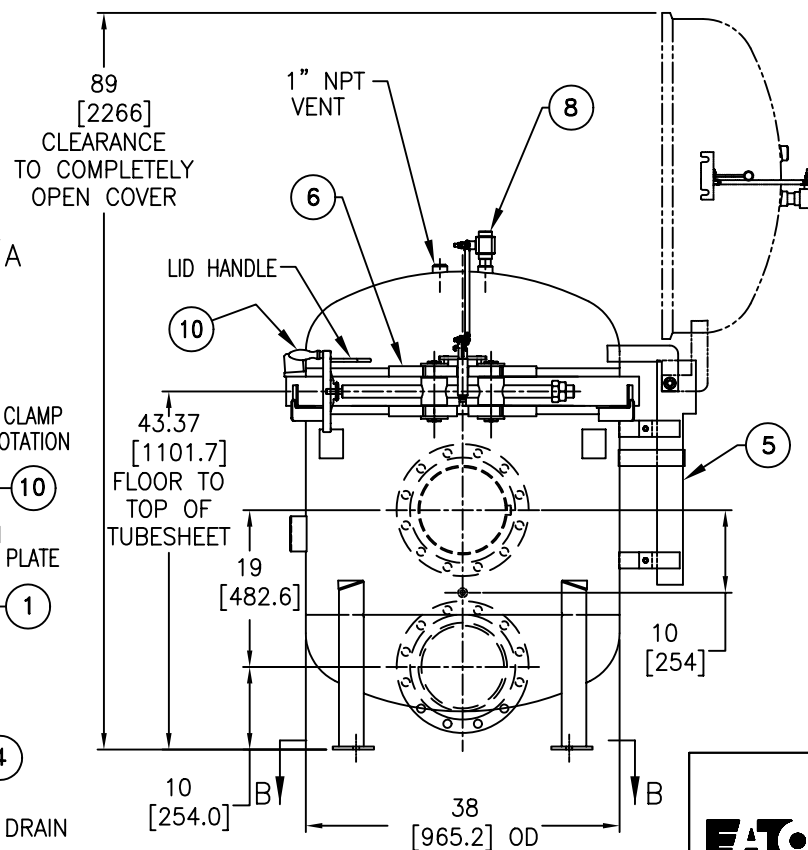
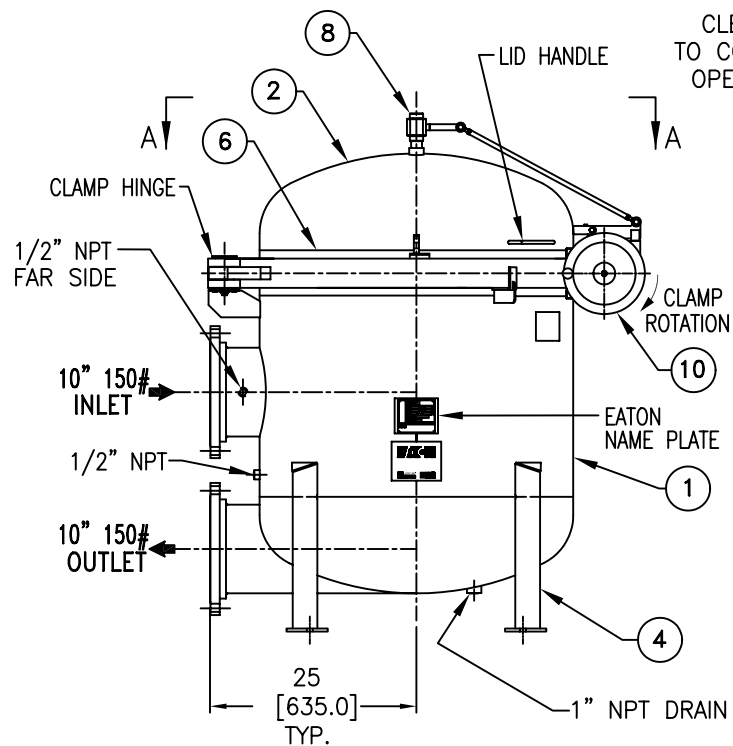
(4) .875 [22.2]  $\phi$  BOLT HOLES  
LOCATED ON 36.5 [927.1] B.C.D.



ITEM	PART NAME	MATERIAL
1	BODY	SA240-304/304L
2	COVER	SA240-304/304L
3	O-RING	BUNA-N
4	LEGS	STAINLESS STEEL
5	SPRING ASSISTED MECHANISM	STAINLESS STEEL
6	CLAMP ASSEMBLY	STAINLESS STEEL
7	FILTER BAG HOLD DOWN	304 SS
8	1" VENT VALVE ASSY.	304 SS
9	SPINDLE BOLT	SA193-B7 NEDOX COATED
10	SPINDLE HANDLE	ALUMINUM

#### NOTES:

1. UNITS ARE DESIGNED, FABRICATED & U STAMPED IN ACCORDANCE WITH ASME SECT. VIII, DIV. 1 BOILER & PRESSURE VESSEL CODE, IN COMPLIANCE TO LATEST ADDENDA.
2. INLET/OUTLET FLANGE CONNECTIONS PER ANSI B16.5
3. DESIGN PRESSURE: 150 PSIG @ 250°F  
(10.3 BAR @ 121.1°C)
4. ALL DIMENSIONS ARE IN INCHES / [mm]
5. ALL BOLT HOLES STRADDLE NATURAL CENTERLINE.
6. APPROX. WEIGHT (DRY): 1070 lbs. (485 kgs.)
7. APPROX. SHIPPING WEIGHT 1210 lbs. (548 kgs.)



#### CERTIFIED FOR:

P.O. NO.:  
REG. NO.:  
QUOTE NO.:  
TAG NO.:  
VESSEL CODE: V-MBF-1202-BB10-100A-UT-11SE-LOOP  
PART NUMBER: F3AV1200200L304

**EATON**

#### EATON FILTRATION, LLC

900 FAIRMOUNT AVENUE, ELIZABETH, NEW JERSEY 07207

NAME MBF-1202 FILTER VESSEL  
10"-150# INLET/ TANGENTIAL OUTLET  
SPINDLE TYPE-SE (SS-304)

DRAWN FJM DATE 06/20/06 CERT. VA DATE 06/20/06

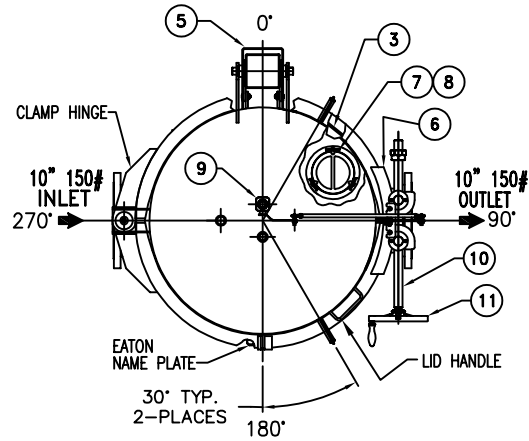
SIZE A DWG NO

SE1210TSL304

REV A

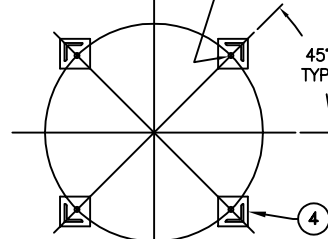
ELECTRONIC FILE NAME: SE1210TSL304.DWG  
REF. ECR E023 DATE 06/20/06

UNAUTHORIZED USE, MANUFACTURE OR REPRODUCTION IN WHOLE OR IN PART IS PROHIBITED. DRAWING, DESIGN AND OTHER DISCLOSURES PROPERTY OF EATON FILTRATION, LLC



VIEW A-A

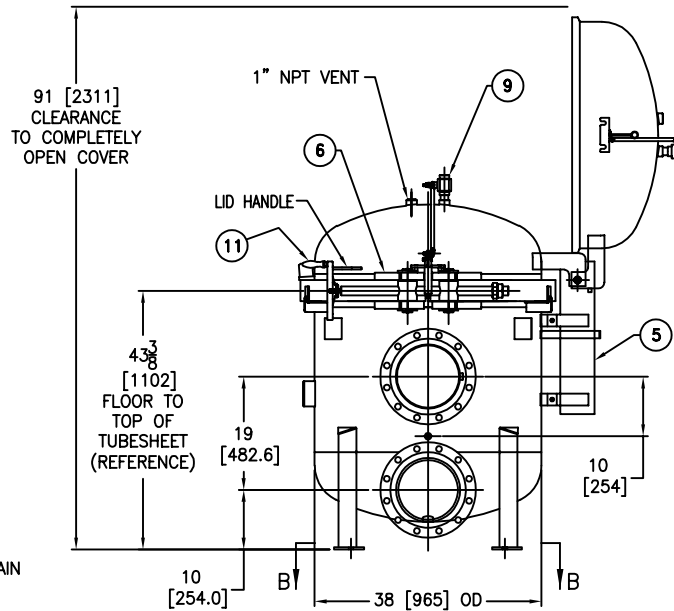
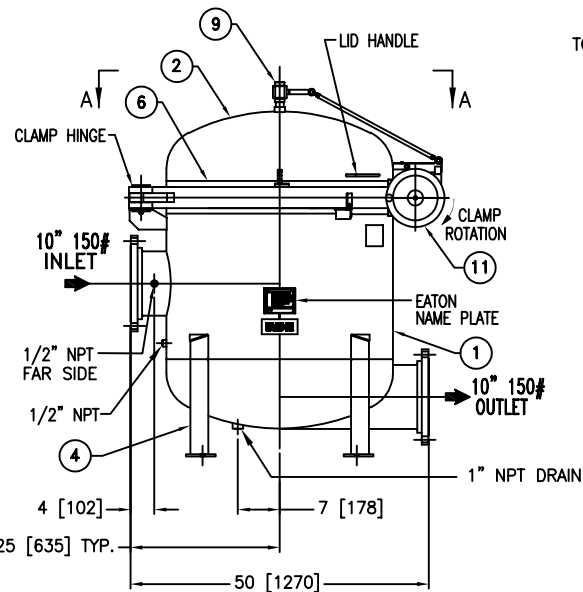
(4) .875 [22.2] Ø BOLT HOLES  
LOCATED ON 36.5 [927.1] B.C.D.



VIEW B-B

REVISIONS				
REV	DESCRIPTION	BY	ECO	DATE
F	UPDATED DRAWING	FJM	0087974	08/02/13

ITEM	PART NAME	MATERIAL
1	BODY	SA240-316/316L
2	COVER	SA240-316/316L
3	O-RING P/N L0000293	BUNA-N
4	LEGS	STAINLESS STEEL
5	SPRING ASSISTED MECHANISM	STAINLESS STEEL
6	CLAMP ASSEMBLY	STAINLESS STEEL
7	RESTRAINER BASKET P/N L0001753	316 SS
8	FILTER BAG HOLD DOWN	316 SS
9	1" VENT VALVE ASSY.	316 SS
10	SPINDLE BOLT	SA193-B7 NEDOX COATED
11	SPINDLE HAND WHEEL	ALUMINUM (BLACK COATED)



#### NOTES:

1. UNITS ARE DESIGNED, FABRICATED & U STAMPED IN ACCORDANCE WITH ASME SECT. VIII, DIV. 1 BOILER & PRESSURE VESSEL CODE, IN COMPLIANCE TO LATEST ADDENDA.
2. INLET/OUTLET FLANGE CONNECTIONS PER ANSI B16.5
3. DESIGN PRESSURE: 150 PSIG @ 250°F (10.3 BAR @ 121.1°C)
4. DIMENSIONS SHOWN IN [ ] ARE IN MILLIMETERS AND FOR REFERENCE ONLY. ACCEPTANCE OF THIS PART WILL BE BASED ON "INCH" UNITS & TOLERANCES ONLY.
5. ALL BOLT HOLES STRADDLE NATURAL CENTERLINE.
6. APPROX. WEIGHT (DRY): 1070 lbs. (485 kgs.)
7. APPROX. SHIPPING WEIGHT 1210 lbs. (548 kgs.)

TOLERANCES (UNLESS OTHERWISE SPECIFIED)	
DECIMAL:	.X ± .030 .XX ± .010 .XXX ± .005
FRACTIONAL:	± 1/16
NOZZLE Ø TO FLOOR:	1/8" < 4" > 1/4"
FACE TO FACE:	1/8" < 4" > 1/4"
ANGULAR:	± 1°
FLANGES (H/V):	± 1/2"
VESSEL OVERALL HT:	1"

BOLT HOLES MUST STRADDLE Ø  
MACHINED PARTS TO BE FREE OF BURRS  
FOR ADDITIONAL TOLERANCE DETAILS  
REF. ES-211, ES-222 AND ES-223

REVIEWED FOR CLASSIFICATION PER PR-4  
CRITICAL SIGNIFICANT

CUSTOMER INFO	
NAME	
P.O. NO.	
S.O. NO.	
QUANTITY	
PART NO.	F3AV1200200

DRAWN BY	FJM
SCALE	AS DRAWN
RESTRICTION	RESTRICTION
SHEET	1 OF 1
PROJECTION	THIRD ANGLE

VESSEL CODE: VMBF-1202-AB10-100A-UT-11SE

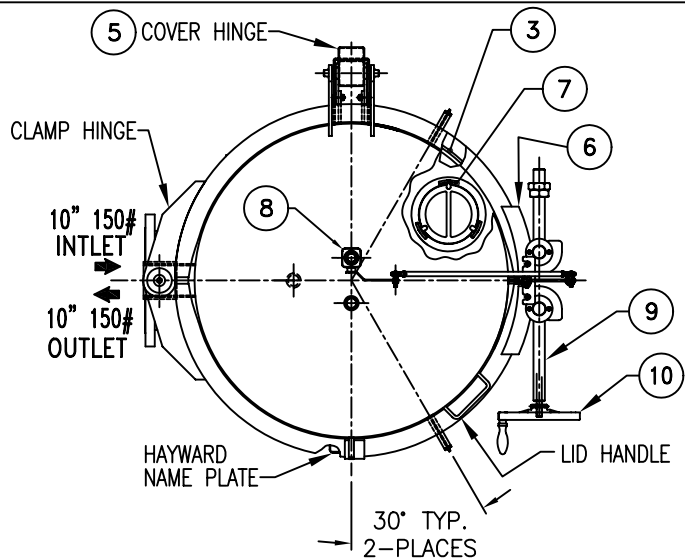


EATON FILTRATION, LLC  
DESIGN CENTER  
TINTON FALLS, NEW JERSEY, USA • PORTAGE, MICHIGAN, USA

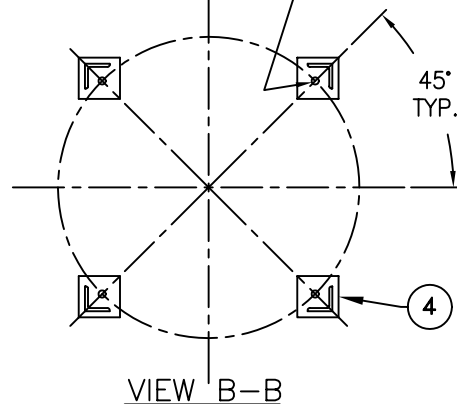
TITLE MAXILINE (VMBF-1202) FILTER VESSEL  
10" 150# RF INLET/ TANGENTIAL OUTLET  
SPINDLE TYPE-SE IN-LINE MAT'L. SS-316

DATE	03/18/03	SIZE	A	DWG FILENAME	SE1210TS	REV	F
------	----------	------	---	--------------	----------	-----	---

EATON CORPORATION - CONFIDENTIAL AND PROPRIETARY NOTICE TO PERSONS RECEIVING THIS DRAWING AND/OR TECHNICAL INFORMATION  
THIS DOCUMENT, INCLUDING THE DRAWING AND INFORMATION CONTAINED THEREON IS CONFIDENTIAL AND IS THE EXCLUSIVE PROPERTY OF EATON AT ANY TIME, BY TAKING THE  
POSSESSION OF THIS DOCUMENT THE RECIPIENT ACKNOWLEDGES AND AGREES THAT THIS DOCUMENT CANNOT BE USED IN ANY MANNER ADVERSE TO THE INTEREST OF EATON AND  
THAT NO PORTION OF THIS DRAWING MAY BE COPIED OR OTHERWISE REPRODUCED WITHOUT THE PRIOR WRITTEN CONSENT OF EATON. IN THE CASE OF CONFLICT CONTRACTUAL  
PROVISIONS, THIS NOTICE SHALL GOVERN THE STATUS OF THIS DOCUMENT.  
2013 EATON CORPORATION - ALL RIGHTS RESERVED.



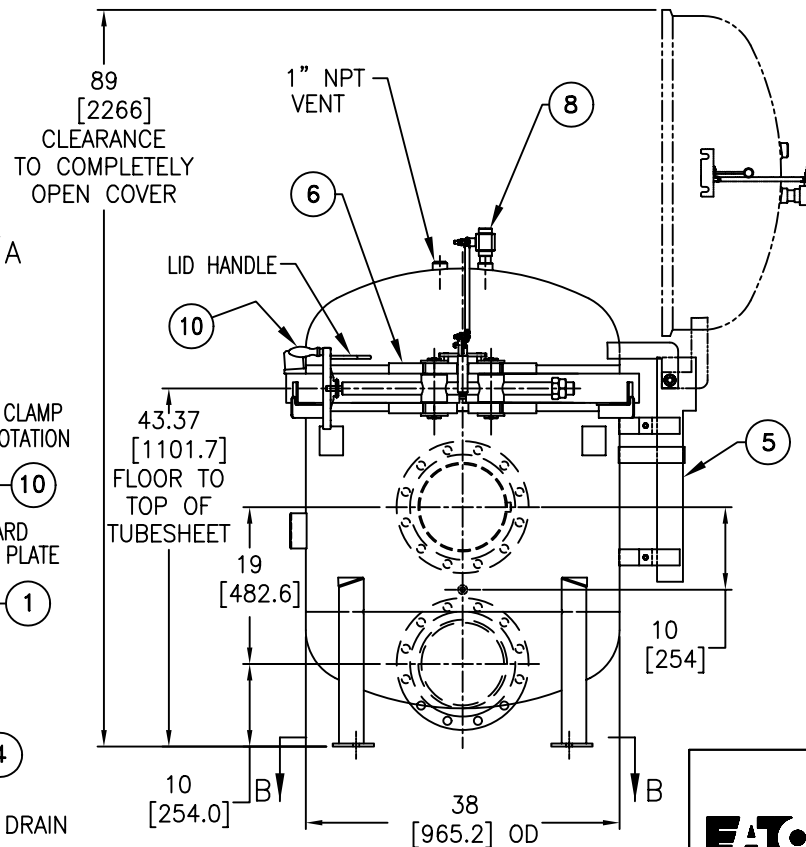
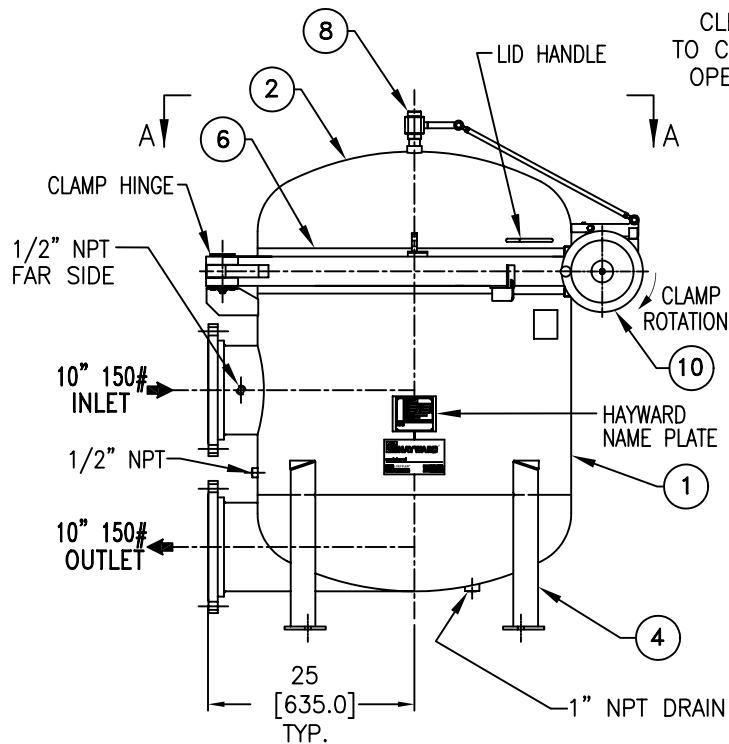
(4) .875 [22.2]  $\phi$  BOLT HOLES  
LOCATED ON 36.5 [927.1] B.C.D.



ITEM	PART NAME	MATERIAL
1	BODY	SA240-316/316L
2	COVER	SA240-316/316L
3	O-RING	BUNA-N
4	LEGS	STAINLESS STEEL
5	SPRING ASSISTED MECHANISM	STAINLESS STEEL
6	CLAMP ASSEMBLY	STAINLESS STEEL
7	FILTER BAG HOLD DOWN	316 SS
8	1" VENT VALVE ASSY.	316 SS
9	SPINDLE BOLT	SA193-B7 NEDOX COATED
10	SPINDLE HANDLE	ALUMINUM

#### NOTES:

1. UNITS ARE DESIGNED, FABRICATED & U STAMPED IN ACCORDANCE WITH ASME SECT. VIII, DIV. 1 BOILER & PRESSURE VESSEL CODE, IN COMPLIANCE TO LATEST ADDENDA.
2. INLET/OUTLET FLANGE CONNECTIONS PER ANSI B16.5
3. DESIGN PRESSURE: 150 PSIG @ 250°F  
(10.3 BAR @ 121.1°C)
4. ALL DIMENSIONS ARE IN INCHES / [mm]
5. ALL BOLT HOLES STRADDLE NATURAL CENTERLINE.
6. APPROX. WEIGHT (DRY): 1070 lbs. (485 kgs.)
7. APPROX. SHIPPING WEIGHT 1210 lbs. (548 kgs.)



#### CERTIFIED FOR:

P.O. NO.:  
REG. NO.:  
QUOTE NO.:  
TAG NO.:  
VESSEL CODE: V-MBF-1202-AB10-100A-UT-11SE-LOOP  
PART NUMBER: F3AV1200200L

**EATON**

#### EATON FILTRATION, LLC

900 FAIRMOUNT AVENUE, ELIZABETH, NEW JERSEY 07207

NAME MBF-1202 FILTER VESSEL  
10"-150# INLET/ TANGENTIAL OUTLET  
SPINDLE TYPE-SE (SSTL)

DRAWN SD DATE 02/13/04 CERT. WB DATE 02/13/04

SIZE DWG  
A NO

SE1210TSL

REV  
C

ELECTRONIC FILE NAME: SE1210TSL.DWG  
REF. ECR D649 DATE 01/04/06

UNAUTHORIZED USE, MANUFACTURE OR  
REPRODUCTION IN WHOLE OR IN PART IS  
PROHIBITED. DRAWING, DESIGN AND  
OTHER DISCLOSURES PROPERTY OF  
EATON FILTRATION, LLC