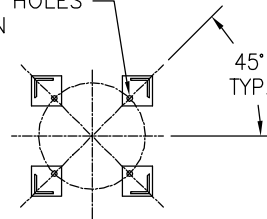


(4) 3/4" DIA BOLT HOLES
LOCATED AS SHOWN
ON 14.12 B.C.D.

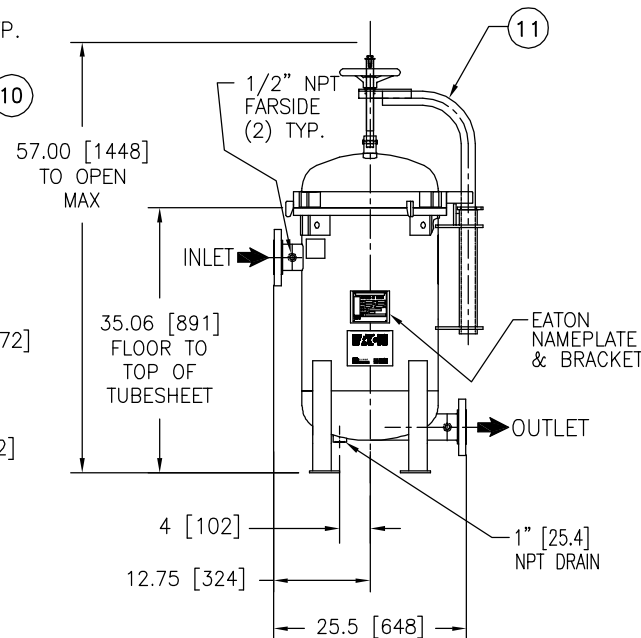
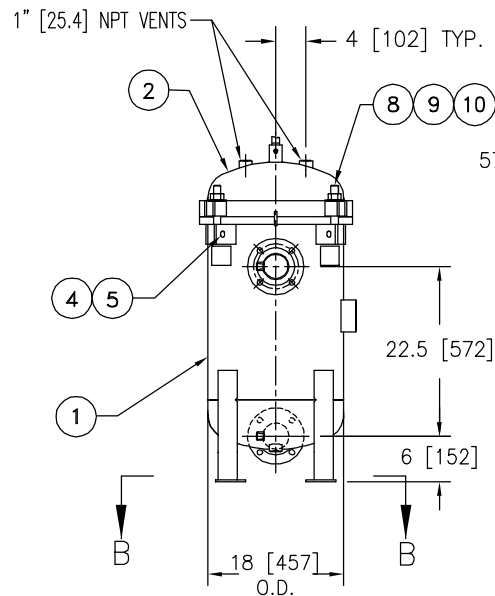


SECTION B-B

ITEM	PART NAME	MATERIAL
1	BODY	SA240 316/316L
2	COVER	SA240 316/316L
3	O-RING	BUNA-N
4	PIN	SA193 B7 ZINC PL
5	SNAP RING	STEEL ZINC PL
6	BASKET RESTRAINER	316 SS
7	FILTER BAG RETAINER	316 SS
8	EYE BOLT	SA193 B7 ZINC PL
9	HEX NUT	SA194 2H ZINC PL
10	WASHER	STEEL ZINC PL
11	DAVIT ASSEMBLY	CARBON STEEL

NOTES:

1. UNITS ARE TO BE DESIGNED, FABRICATED & "U" STAMPED IN ACCORDANCE WITH ASME SECT. VIII, DIV. 1 BOILER & PRESSURE VESSEL CODE, IN COMPLIANCE TO LATEST ADDENDA.
2. INLET / OUTLET FLANGE CONNECTIONS PER ANSI B 16.5.
3. DESIGN PRESSURE: 150 PSI (MAWP)
DESIGN TEMPERATURE 250° F.
MDMT - -20° F @ 150 PSI.
4. ALL DIMENSIONS ARE IN INCHES / (MM).
5. ALL BOLT HOLES ARE TO STRADDLE NATURAL CENTERLINES.
6. APPROX. WEIGHT (DRY) 574 LB. (260 KG.)



CERTIFIED FOR:
P.O. NO.:
SALES ORDER NO.:
QUOTE NO.:
TAG NO.:
VESSEL CODE: MBF-0302-AB10-030A-UT-11HD
PART NUMBER: F3AV0300003

EATON		EATON FILTRATION, LLC			
		70 WOOD AVENUE SOUTH, ISELIN, NEW JERSEY 08830			
		NAME MAXILINE MBF0302HD FILTER VESSEL			
		3" 150# RF INLET/TANGENTIAL OUTLET			
		STAINLESS STEEL			
DRAWN	SD/ID	DATE	11/20/00	CERT.	LF
SIZE	DWG	HD0303TS			REV
A	NO				E

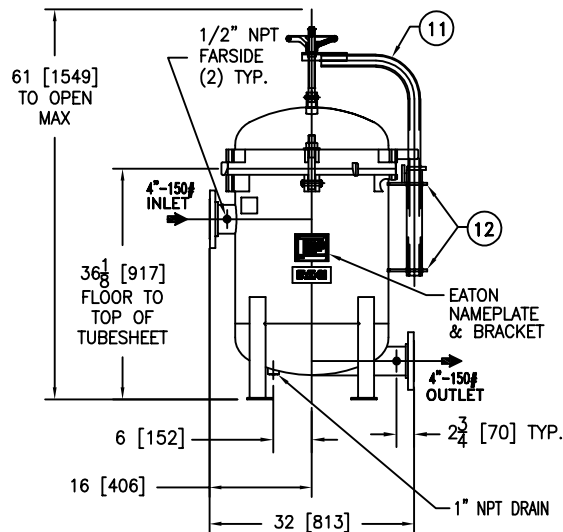
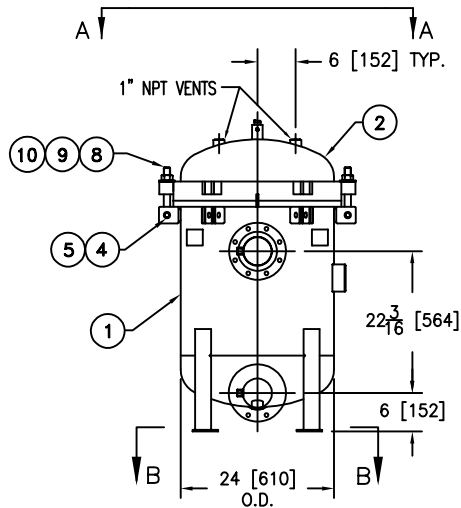
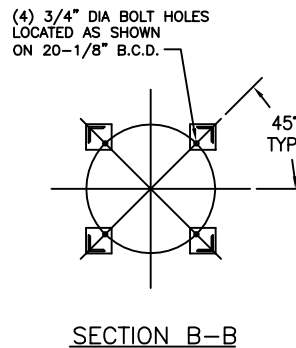
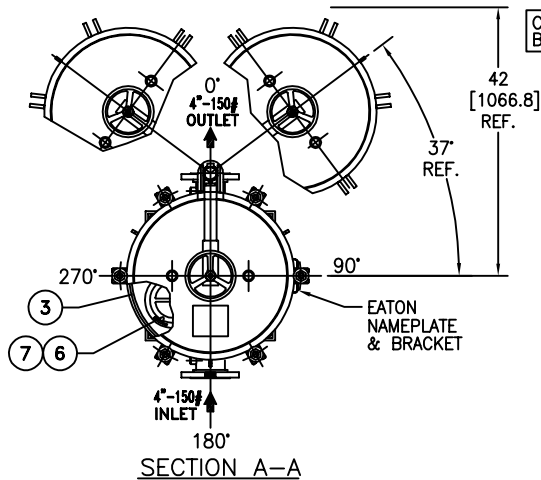
ELECTRONIC FILE NAME:

HD0303TS.DWG

REF. ECR F071

DATE 02/11/08

UNAUTHORIZED USE, MANUFACTURE OR
REPRODUCTION IN WHOLE OR IN PART IS
PROHIBITED. DRAWING, DESIGN AND
OTHER DISCLOSURES PROPERTY OF
EATON FILTRATION, LLC



REVISIONS				
REV	DESCRIPTION	BY	ECO	DATE
G	UPDATE DRAWING	FJM	0097966	05/21/14

ITEM	PART NAME	MATERIAL
1	BODY	SA240 316/316L
2	COVER	SA240 316/316L
3	O-RING P/N 2375035093	BUNA-N
4	PIN	SA193 B7 ZINC PL
5	SNAP RING	STEEL ZINC PL
6	BASKET RESTRAINER P/N L0001753	316 SS
7	FILTER BAG RETAINER	316 SS
8	EYE BOLT	SA193 B7 ZINC PL
9	HEX NUT	SA194 2H ZINC PL
10	WASHER	STEEL ZINC PL
11	DAVIT ASSEMBLY	CARBON STEEL
12	DAVIT SOCKET BRACKETS	304 SS

NOTES:

- UNITS ARE TO BE DESIGNED, FABRICATED & "U" STAMPED IN ACCORDANCE WITH ASME SECT. VIII, DIV. 1 BOILER & PRESSURE VESSEL CODE, IN COMPLIANCE TO LATEST ADDENDA.
- INLET / OUTLET FLANGE CONNECTIONS PER ANSI B 16.5.
- DESIGN PRESSURE: 150 PSI (MAWP)
DESIGN TEMPERATURE 250° F.
MDMT - -20° F @ 150 PSI.
- ALL DIMENSIONS ARE IN INCHES / [MM].
- ALL BOLT HOLES ARE TO STRADDLE NATURAL CENTERLINES.
- APPROX. WEIGHT (DRY) 615 LB. (278 KG.)
- PAINT C/STL. PER EATON STANDARD ES-301

VESEL CODE: MBF-0402-AB10-040A-UT-11HD

EATON DESIGN CENTER TINTON FALLS, NEW JERSEY, USA • PORTAGE, MICHIGAN, USA		TITLE MAXILINE MBF-0402HD FILTER VESSEL 4" 150# RF INLET / TANGENTIAL OUTLET SS-316 W/BUNA O-RING	
DATE 11/13/00	SIZE A	DWG FILENAME HD0404TS	REV G

TOLERANCES (UNLESS OTHERWISE SPECIFIED)	
DECIMAL:	.X ± .030 .XX ± .010 .XXX ± .005
FRACTIONAL:	± 1/16
NOZZLE C TO FLOOR:	1/8" < 4' > 1/4"
FACE TO FACE:	1/8" < 4' > 1/4"
ANGULAR:	± 1°
FLANGES (H/V):	± 1/2"
VESSEL OVERALL HT:	1"

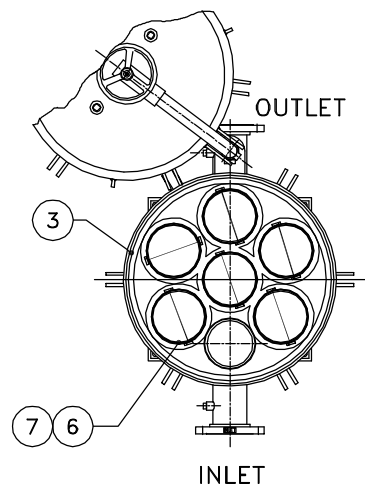
BOLT HOLES MUST STRADDLE C
MACHINED PARTS TO BE FREE OF BURRS
FOR ADDITIONAL TOLERANCE DETAILS
REF. ES-211, ES-222 AND ES-223

REVIEWED FOR CLASSIFICATION PER PR-4
 CRITICAL SIGNIFICANT

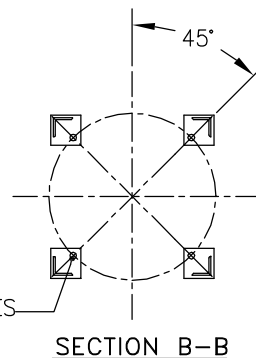
CUSTOMER INFO	
NAME	
P.O. NO.	
S.O. NO.	
QUANTITY	
PART NO.	F3AV0400003

DRAWN BY SD	SCALE AS DRAWN
RESTRICTION RESTRICTED	SHEET 1 OF 1
PROJECTION THIRD ANGLE	

EATON CORPORATION - CONFIDENTIAL AND PROPRIETARY NOTICE TO PERSONS RECEIVING THIS DRAWING AND/OR TECHNICAL INFORMATION
THIS DOCUMENT, INCLUDING THE DRAWING AND INFORMATION CONTAINED THEREIN IS CONFIDENTIAL AND IS THE EXCLUSIVE PROPERTY OF EATON AT ANY TIME, BY TAKING
THE POSSESSION OF THIS DOCUMENT THE RECIPIENT ACKNOWLEDGES AND AGREES THAT THIS DOCUMENT CANNOT BE USED IN ANY MANNER ADVERSE TO THE INTEREST OF
EATON AND THAT NO PORTION OF THIS DRAWING MAY BE COPIED OR OTHERWISE REPRODUCED WITHOUT THE PRIOR WRITTEN CONSENT OF EATON. IN THE CASE OF
CONFLICTING CONTRACTUAL PROVISIONS, THIS NOTICE SHALL GOVERN THE STATUS OF THIS DOCUMENT.
©2014 EATON CORPORATION - ALL RIGHTS RESERVED.



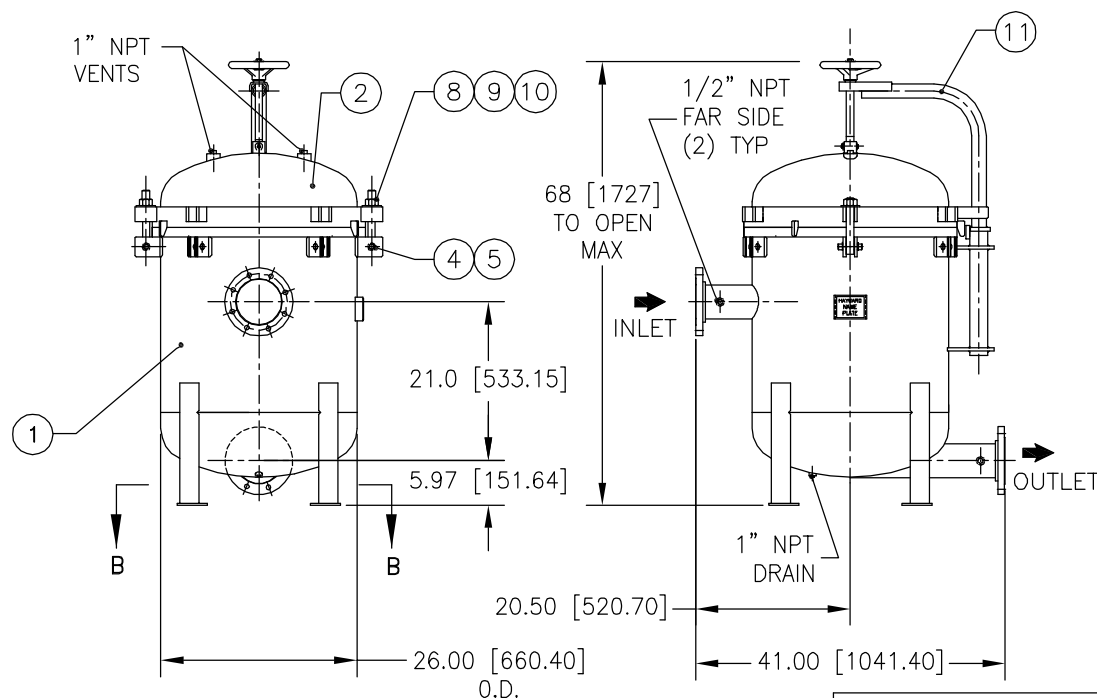
(4) 3/4"Ø [19Ø] BOLT HOLES
LOCATED AS SHOWN
ON 22.13Ø [562Ø] B.C.



ITEM	PART NAME	MATERIAL
1	BODY	SA240 316/316L
2	COVER	SA240 316/316L
3	O-RING	BUNA-N
4	PIN	SA193 B7 ZINC PL
5	SNAP RING	STEEL ZINC PL
6	BASKET RESTRAINER	316 SS
7	FILTER BAG RETAINER	316 SS
8	EYE BOLT	SA193 B7 ZINC PL
9	HEX NUT	SA194 2H ZINC PL
10	WASHER	STEEL ZINC PL
11	DAVIT ASSEMBLY	CARBON STEEL

NOTES:

1. UNITS ARE TO BE DESIGNED, FABRICATED & "U" STAMPED IN ACCORDANCE WITH ASME SECT. VIII, DIV. 1 BOILER & PRESSURE VESSEL CODE, IN COMPLIANCE TO LATEST ADDENDA.
2. INLET / OUTLET FLANGE CONNECTIONS PER ANSI B 16.5.
3. DESIGN PRESSURE: 150 PSI (MAWP)
DESIGN TEMPERATURE 250° F.
MDMT: -20° F @ 150 PSI.
4. ALL DIMENSIONS ARE IN INCHES / (MM).
5. ALL BOLT HOLES ARE TO STRADDLE NATURAL CENTERLINES.
6. APPROX. WEIGHT (DRY) 460 LB. (209 KG.)



CERTIFIED FOR:

P.O. NO.:

REG. NO.:

QUOTE NO.:

TAG NO.:

VESSEL CODE: MBF-0602-AB10-040A-UT-11HD

HAYWARD PART NO.: F3AV0600100



HAYWARD INDUSTRIAL PRODUCTS, INC.

Manufacturers of LOEFFLER FILTRATION & GAF® FILTER SYSTEMS
900 FAIRMOUNT AVENUE, ELIZABETH, NEW JERSEY 07207

NAME **MAXILINE MBF0602HD FILTER VESSEL**
4" 150# RF INLET/TANGENTIAL OUTLET
STAINLESS STEEL

GAF and the GAF logo are registered trademarks of GAF Corporation in the United States, and are used under licenses.

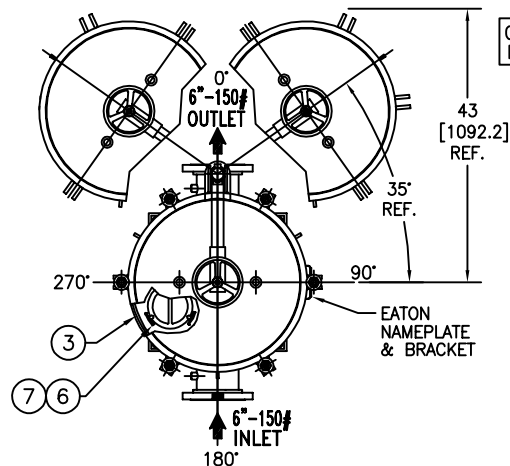
REV 8/00

ELECTRONIC FILE NAME: HD0604TS.DWG

REF. ECR 9520 DATE 06/07/01

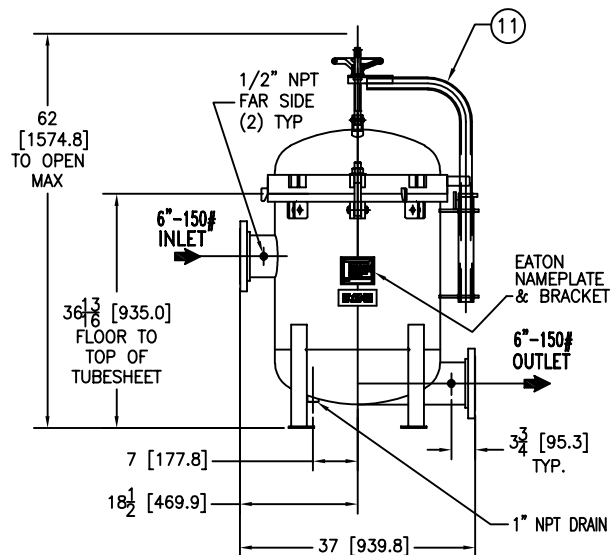
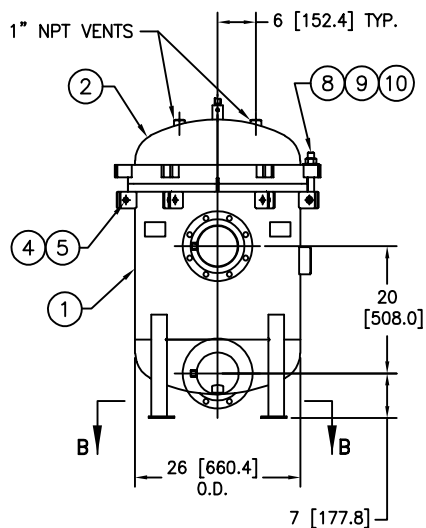
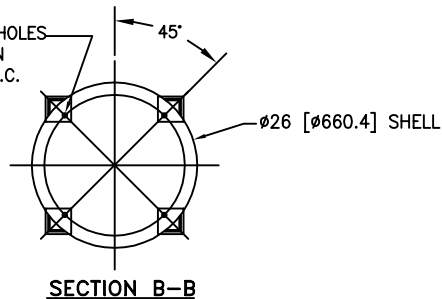
UNAUTHORIZED USE, MANUFACTURE OR REPRODUCTION IN WHOLE OR IN PART IS PROHIBITED. DRAWING, DESIGN AND OTHER DISCLOSURES PROPERTY OF HAYWARD INDUSTRIAL PRODUCTS, INC.

DRAWN	GC	DATE	12/29/00	CERT.	FG	DATE	1/2/01
SIZE	DWG	HD0604TS				REV	B
A	NO						



COVER CAN SWING
IN BOTH DIRECTIONS

(4) 3/4" ϕ [19 ϕ] BOLT HOLES
LOCATED AS SHOWN
ON 22.13 ϕ [562 ϕ] B.C.



R E V I S I O N S				
REV	DESCRIPTION	BY	ECO	DATE
H	UPDATED DRAWING	FJM	0104956	11/25/14

ITEM	PART NAME	MATERIAL
1	BODY	SA240 316/316L
2	COVER	SA240 316/316L
3	O-RING P/N 2375036593	BUNA-N
4	PIN	SA193 B7 ZINC PL
5	SNAP RING	STEEL ZINC PL
6	RESTRAINER BASKET P/N L0001753	316 SS
7	FILTER BAG RETAINER	316 SS
8	EYE BOLT	SA354 BD ZINC PL
9	HEX NUT	SA194 2H ZINC PL
10	WASHER	STEEL ZINC PL
11	DAVIT ASSEMBLY	CARBON STEEL

NOTES:

1. UNITS ARE TO BE DESIGNED, FABRICATED & "U" STAMPED IN ACCORDANCE WITH ASME SECT. VIII, DIV. 1 BOILER & PRESSURE VESSEL CODE, IN COMPLIANCE TO LATEST ADDENDA.
2. INLET / OUTLET FLANGE CONNECTIONS PER ANSI B 16.5.
3. DESIGN PRESSURE: 150 PSI (MAWP)
DESIGN TEMPERATURE 250° F.
MDMT - -20° F @ 150 PSI.
4. DIMENSIONS SHOWN IN [] ARE IN MILLIMETERS AND FOR REFERENCE ONLY. ACCEPTANCE OF THIS PART WILL BE BASED ON "INCH" UNITS & TOLERANCES ONLY.
5. ALL BOLT HOLES ARE TO STRADDLE NATURAL CENTERLINES.
6. APPROX. WEIGHT (DRY) 810 LB. (367 kgs)
7. APPROX. SHIPPING WEIGHT 935 LBS. (424 kgs)
8. ALL CARBON STEEL PAINTED PER EATON STANDARD ES-301

TOLERANCES (UNLESS OTHERWISE SPECIFIED)	
DECIMAL:	.X \pm .030 .XX \pm .010 .XXX \pm .005
FRACTIONAL:	\pm 1/16
NOZZLE ϕ TO FLOOR:	1/8" < 4" > 1/2"
FACE TO FACE:	1/8" < 4" > 1/2"
ANGULAR:	\pm 1°
FLANGES (H/V):	\pm 1/2"
VESEL OVERALL HT:	1"

BOLT HOLES MUST STRADDLE ϕ
MACHINED PARTS TO BE FREE OF BURRS
FOR ADDITIONAL TOLERANCE DETAILS
REF. ES-211, ES-222 AND ES-223

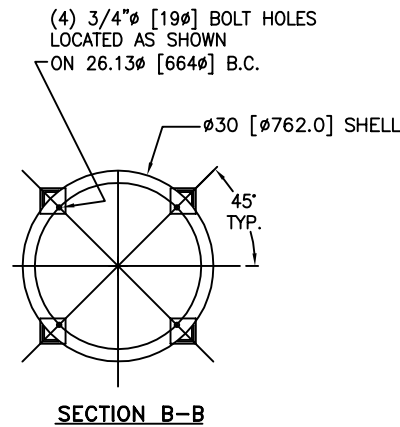
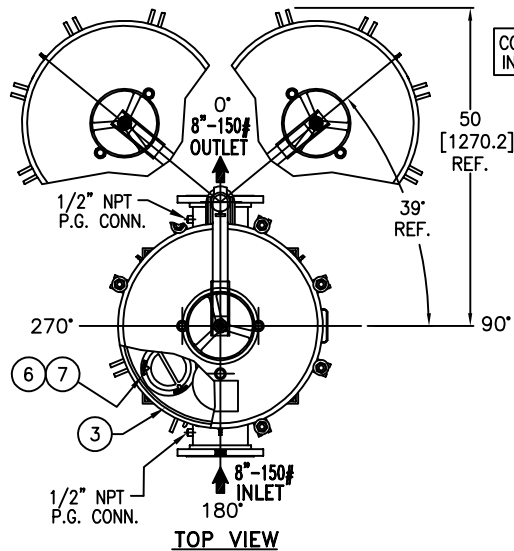
REVIEWED FOR CLASSIFICATION PER PR-4
CRITICAL SIGNIFICANT

CUSTOMER INFO	
NAME	
P.O. NO.	
S.O. NO.	
QUANTITY	
PART NO.	F3AV0600003

DRAWN BY SD/JA	SCALE AS DRAWN
RESTRICTION RESTRICTED	SHEET 1 OF 1
PROJECTION THIRD ANGLE	DATE 11/27/00

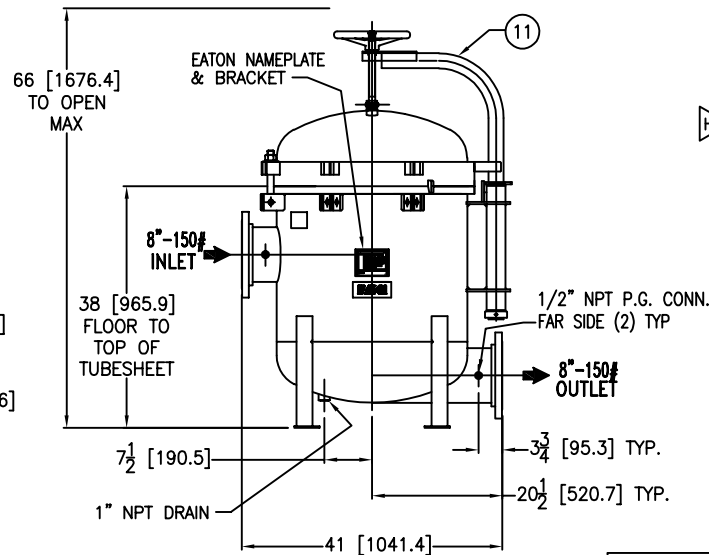
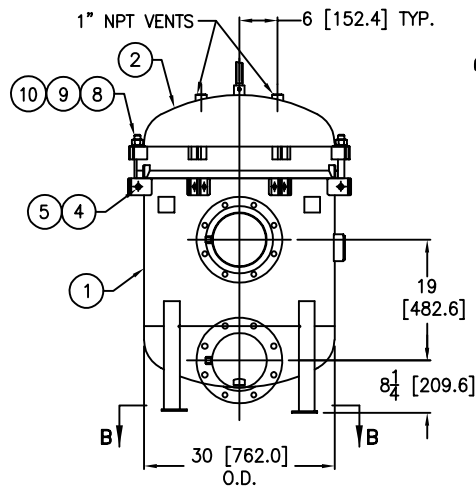
VESSEL CODE: MBF-0602-AB10-060A-UT-11HD	
HYDRAULICS GROUP FILTRATION DIVISION GALESBURG, MICHIGAN, USA • TINTON FALLS, NEW JERSEY, USA	
TITLE MAXILINE (MBF-0602HD) FILTER VESSEL 6" 150# RF INLET/TANGENTIAL OUTLET MAT'L. SS-316 W/BUNA O-RING	
DATE 11/27/00	SIZE A
DWG FILENAME HD0606TS	REV H

EATON CORPORATION - CONFIDENTIAL AND PROPRIETARY NOTICE TO PERSONS RECEIVING THIS DRAWING AND/OR TECHNICAL INFORMATION
THIS DOCUMENT, INCLUDING THE DRAWING AND INFORMATION CONTAINED THEREIN IS CONFIDENTIAL, AND IS THE EXCLUSIVE PROPERTY OF EATON AT ANY TIME. BY SHOWING THE
POSSESSION OF THIS DOCUMENT THE RECIPIENT ACKNOWLEDGES AND AGREES THAT THIS DOCUMENT CANNOT BE USED IN ANY MANNER ADVERSE TO THE INTEREST OF EATON AND
THAT NO PORTION OF THIS DRAWING MAY BE COPIED OR OTHERWISE REPRODUCED WITHOUT THE PRIOR WRITTEN CONSENT OF EATON, IN THE CASE OF CONFLICT OF CONTRACTUAL
PROVISIONS, THIS NOTICE SHALL GOVERN THE STATUS OF THIS DOCUMENT.
2014 EATON CORPORATION - ALL RIGHTS RESERVED.



R E V I S I O N S				
REV	DESCRIPTION	BY	ECO	DATE
H	UPDATED DRAWING	FJM	0132760	03/20/17

ITEM	PART NAME	MATERIAL
1	BODY	SA240 316/316L
2	COVER	SA240 316/316L
3	O-RING P/N 2375037193	BUNA-N
4	PIN	SA193 B7 ZINC PL
5	SNAP RING	STEEL ZINC PL
6	RESTRAINER BASKET P/N L0001753	316 SS
7	FILTER BAG RETAINER	316 SS
8	EYE BOLT	SA354 BD ZINC PL
9	HEX NUT	SA194 2H ZINC PL
10	WASHER	STEEL ZINC PL
11	DAVIT ASSEMBLY	CARBON STEEL



NOTES:

- UNITS ARE DESIGNED, FABRICATED AND "U" STAMPED IN ACCORDANCE WITH THE ASME BOILER & PRESSURE VESSEL CODE SECTION VIII, DIVISION 1, IN COMPLIANCE TO CURRENT MANDATORY EDITION.
- INLET / OUTLET FLANGE CONNECTIONS PER ANSI B 16.5.
- DESIGN PRESSURE: 150 PSI (MAWP)
DESIGN TEMPERATURE 250° F.
MDMT - -20° F @ 150 PSI.
- DIMENSIONS SHOWN IN [] ARE IN MILLIMETERS AND FOR REFERENCE ONLY. ACCEPTANCE OF THIS PART WILL BE BASED ON "INCH" UNITS & TOLERANCES ONLY.
- ALL BOLT HOLES ARE TO STRADDLE NATURAL CENTERLINES.
- APPROX. WEIGHT (DRY) 970 LB. (439 kgs)
- APPROX. SHIPPING WEIGHT 1100 LBS. (498 kgs)
- PAINT C/STL. PER EATON STANDARD ES-301

VESSEL CODE: MBF-0802-AB10-080A-UT-11HD

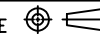
EATON

HYDRAULICS GROUP
FILTRATION DIVISION
GALESBURG, MICHIGAN, USA • TINTON FALLS, NEW JERSEY, USA

TITLE
MAXILINE (MBF-0802HD) FILTER VESSEL
8" 150# RF INLET / TANGENTIAL OUTLET
MAT'L. SS-316 W/BUNA O-RING

DATE 11/27/00 SIZE A DWG FILENAME HD0808TS REV H

DRAWN BY
SD
SCALE
AS DRAWN
RESTRICTION
RESTRICTED
SHEET
1 OF 1
PROJECTION
THIRD ANGLE



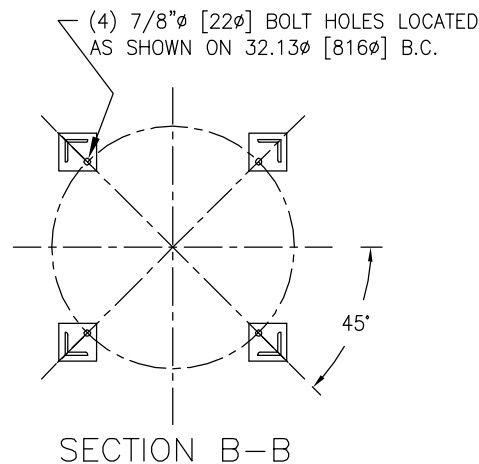
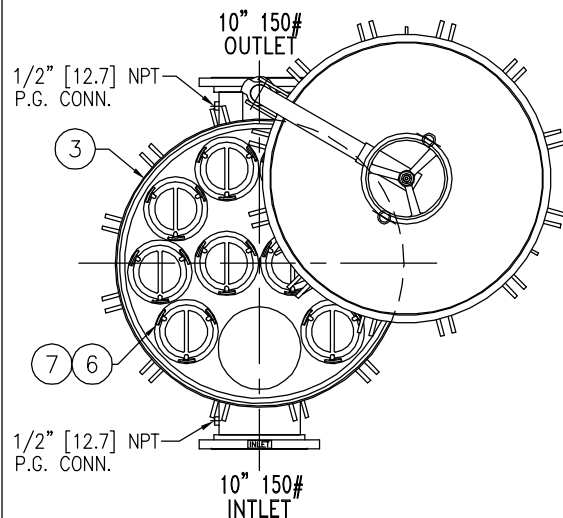
EATON CORPORATION - CONFIDENTIAL AND PROPRIETARY NOTICE TO PERSONS RECEIVING THIS DRAWING AND/OR TECHNICAL INFORMATION: THIS DOCUMENT, INCLUDING THE DRAWING AND INFORMATION CONTAINED THEREON IS CONFIDENTIAL AND IS THE EXCLUSIVE PROPERTY OF EATON AT ANY TIME. BY TAKING THE POSSESSION OF THIS DOCUMENT THE RECIPIENT ACKNOWLEDGES AND AGREES THAT THIS DOCUMENT CANNOT BE USED IN ANY MANNER ADVERSE TO THE INTEREST OF EATON AND THAT NO PORTION OF THIS DRAWING MAY BE COPIED OR OTHERWISE REPRODUCED WITHOUT THE PRIOR WRITTEN CONSENT OF EATON. IN THE CASE OF CONFLICTION CONTRACTUAL PROVISIONS, THIS NOTICE SHALL GOVERN THE STATUS OF THIS DOCUMENT.
2014 EATON CORPORATION - ALL RIGHTS RESERVED.

TOLERANCES (UNLESS OTHERWISE SPECIFIED)	
DECIMAL:	.X \pm .030 .XX \pm .010 .XXX \pm .005
FRACTIONAL:	$\frac{1}{16}$ \pm .006 $\frac{1}{8}$ \pm .010 $\frac{1}{4}$ \pm .015
NOZZLE ϕ TO FLOOR:	$\frac{1}{8}$ " < 4' > $\frac{1}{4}$ "
FACE TO FACE:	$\frac{1}{8}$ " < 4' > $\frac{1}{4}$ "
ANGULAR:	\pm 1°
FLANGES (H/V):	\pm $\frac{1}{16}$ "
VESSEL OVERALL HT:	1"

BOLT HOLES MUST STRADDLE ϕ MACHINED PARTS TO BE FREE OF BURRS FOR ADDITIONAL TOLERANCE DETAILS REF. ES-211, ES-222 AND ES-223

REVIEWED FOR CLASSIFICATION PER PR-4
CRITICAL SIGNIFICANT

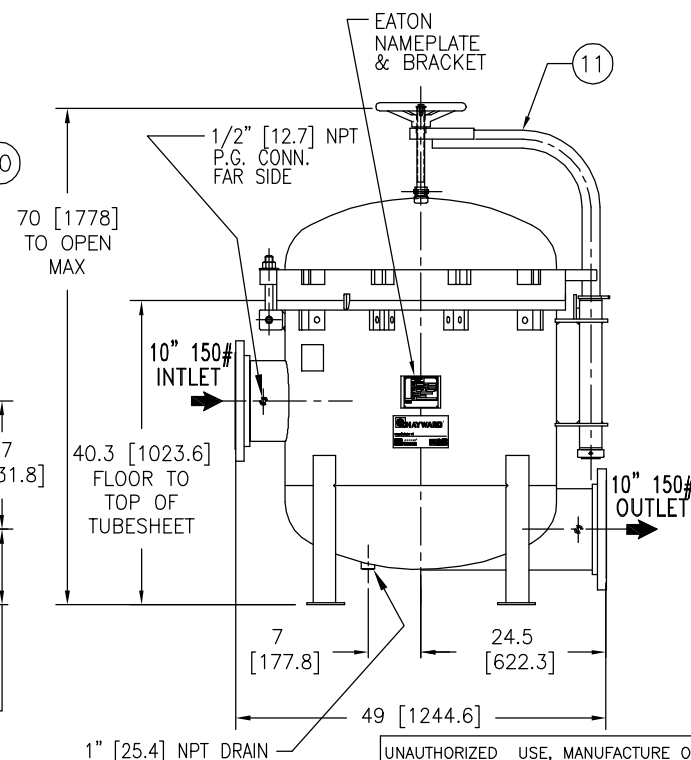
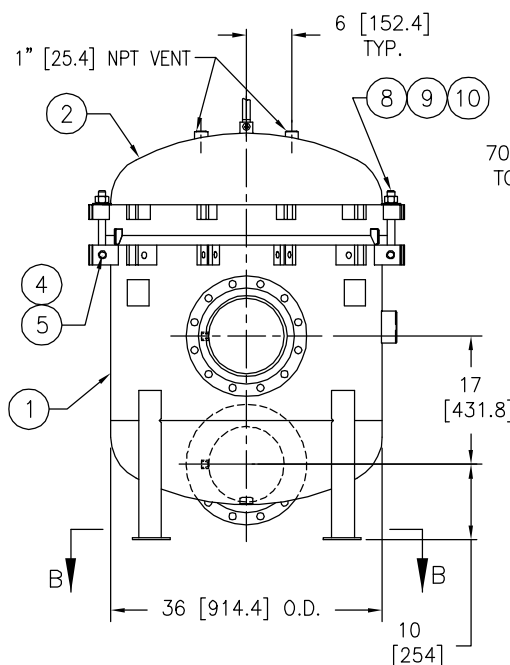
CUSTOMER INFO	
NAME	
P.O. NO.	
S.O. NO.	
QUANTITY	
PART NO.	F3AV0800003



ITEM	PART NAME	MATERIAL
1	BODY	SA240 316/316L
2	COVER	SA240 316/316L
3	O-RING	BUNA-N
4	PIN	SA193 B7 ZINC PL
5	SNAP RING	STEEL ZINC PL
6	BASKET RESTRAINER	316 SS
7	FILTER BAG RETAINER	316 SS
8	EYE BOLT	SA193 B7 ZINC PL
9	HEX NUT	SA194 2H ZINC PL
10	WASHER	STEEL ZINC PL
11	DAVIT ASSEMBLY	CARBON STEEL

NOTES:

1. UNITS ARE TO BE DESIGNED, FABRICATED & "U" STAMPED IN ACCORDANCE WITH ASME SECT. VIII, DIV. 1 BOILER & PRESSURE VESSEL CODE, IN COMPLIANCE TO LATEST ADDENDA.
2. INLET / OUTLET FLANGE CONNECTIONS PER ANSI B 16.5.
3. DESIGN PRESSURE: 150 PSI (MAWP)
DESIGN TEMPERATURE 250° F.
MDMT - -20° F @ 150 PSI.
4. ALL DIMENSIONS ARE IN INCHES / (MM).
5. ALL BOLT HOLES ARE TO STRADDLE NATURAL CENTERLINES.
6. APPROX. WEIGHT (DRY) 1400 LB. (635 KG.)



CERTIFIED FOR:

P.O. NO.:

REG. NO.:

QUOTE NO.:

TAG NO.:

VESSEL CODE: MBF-1002-AB10-100A-UT-11HD

PART NUMBER: F3AV1000003

EATON

EATON FILTRATION, LLC

900 FAIRMOUNT AVENUE, ELIZABETH, NEW JERSEY 07207

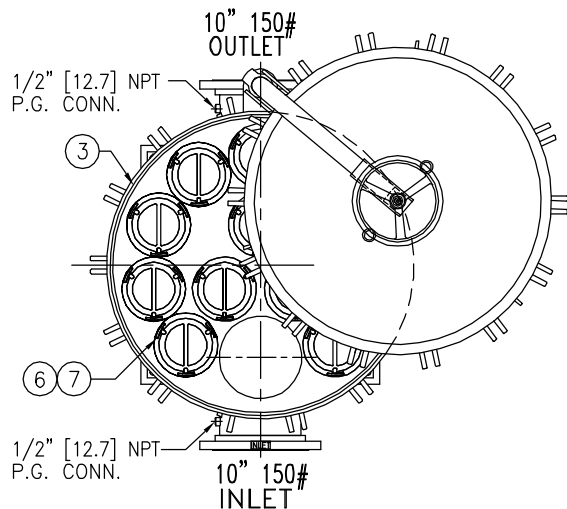
NAME MAXILINE MBF1002HD FILTER VESSEL
10" 150# RF INLET / TANGENTIAL OUTLET
STAINLESS STEEL

DRAWN	ID	DATE 11/10/00	CERT. LF	DATE 1/12/01
SIZE A	DWG NO	HD1010TS		REV D

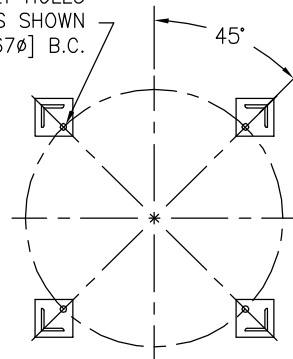
ELECTRONIC FILE NAME: HD1010TS.DWG

REF. ECR D666 DATE 01/23/06

UNAUTHORIZED USE, MANUFACTURE OR REPRODUCTION IN WHOLE OR IN PART IS PROHIBITED. DRAWING, DESIGN AND OTHER DISCLOSURES PROPERTY OF EATON FILTRATION, LLC



(4) 7/8" ϕ [22 ϕ] BOLT HOLES
LOCATED AS SHOWN
ON 34.13 [867 ϕ] B.C.

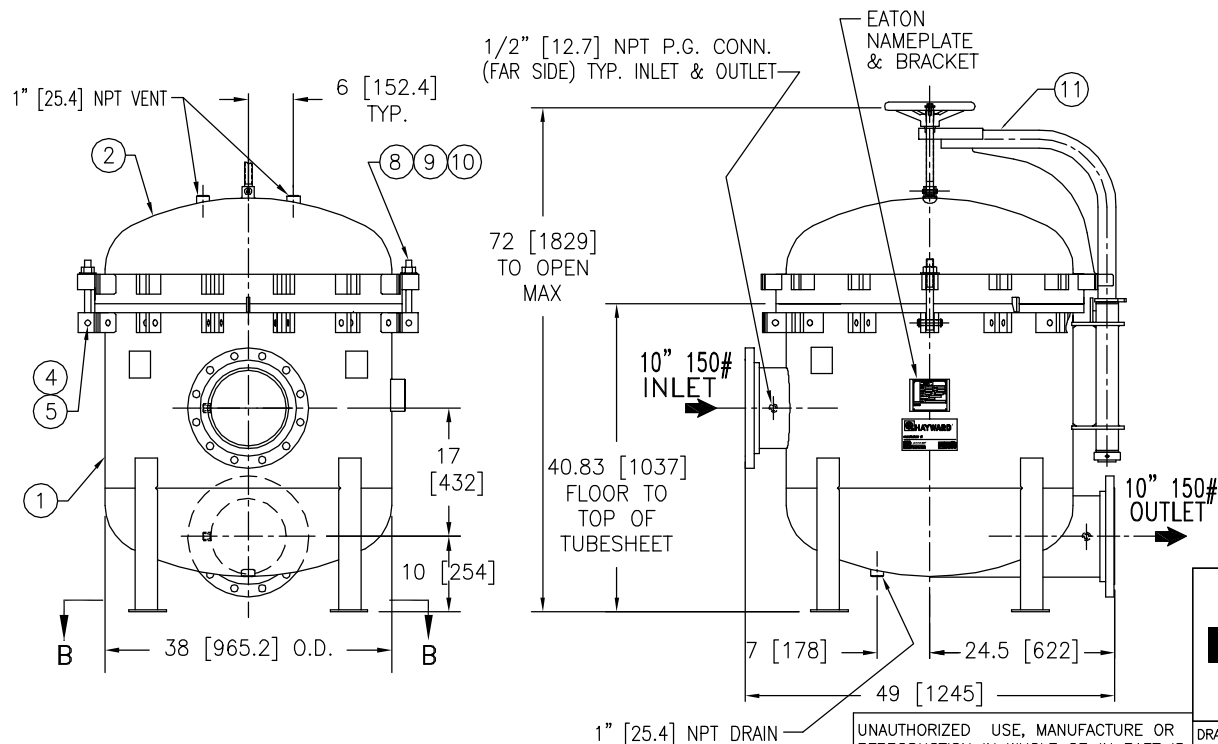


SECTION B-B

ITEM	PART NAME	MATERIAL
1	BODY	SA240 GR. 316/316L
2	COVER	SA240 GR. 316/316L
3	O-RING	BUNA-N
4	PIN	SA193 B7 ZINC PL
5	SNAP RING	STEEL ZINC PL
6	BASKET RESTRAINER	316 SS
7	FILTER BAG RETAINER	316 SS
8	EYE BOLT	SA193 B7 ZINC PL
9	HEX NUT	SA194 2H ZINC PL
10	WASHER	STEEL ZINC PL
11	DAVIT ASSEMBLY	CARBON STEEL

NOTES:

1. UNITS ARE TO BE DESIGNED, FABRICATED & "U" STAMPED IN ACCORDANCE WITH ASME SECT. VIII, DIV. 1 BOILER & PRESSURE VESSEL CODE, IN COMPLIANCE TO LATEST ADDENDA.
2. INLET / OUTLET FLANGE CONNECTIONS PER ANSI B 16.5.
3. DESIGN PRESSURE: 150 PSI (MAWP)
DESIGN TEMPERATURE 250° F.
MDMT - -20° F @ 150 PSI.
4. ALL DIMENSIONS ARE IN INCHES / (MM).
5. ALL BOLT HOLES ARE TO STRADDLE NATURAL CENTERLINES.
6. APPROX. WEIGHT (DRY) 1500 LB. (680 KG.)



CERTIFIED FOR:

P.O. NO.:

REG. NO.:

QUOTE NO.:

TAG NO.:

VESSEL CODE: MBF-1202-AB10-100A-UT-11HD

PART NUMBER: F3AV1200003

EATON

EATON FILTRATION, LLC

900 FAIRMOUNT AVENUE, ELIZABETH, NEW JERSEY 07207

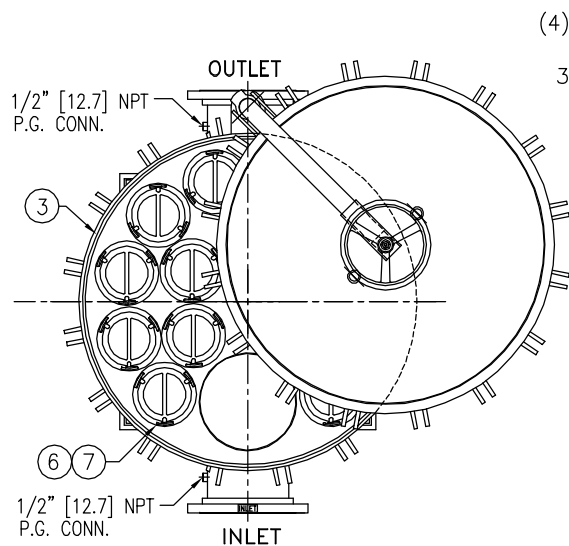
NAME MAXILINE MBF1202HD FILTER VESSEL
10" 150# RF INLET / TANGENTIAL OUTLET
STAINLESS STEEL

DRAWN	VA	DATE	11/08/00	CERT.	LF	DATE	11/08/00
SIZE	DWG	HD1210TS				REV	E
A	NO						

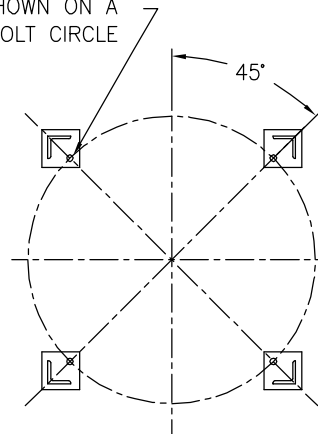
ELECTRONIC FILE NAME: HD1210TS.DWG

REF. ECR D666 DATE 01/23/06

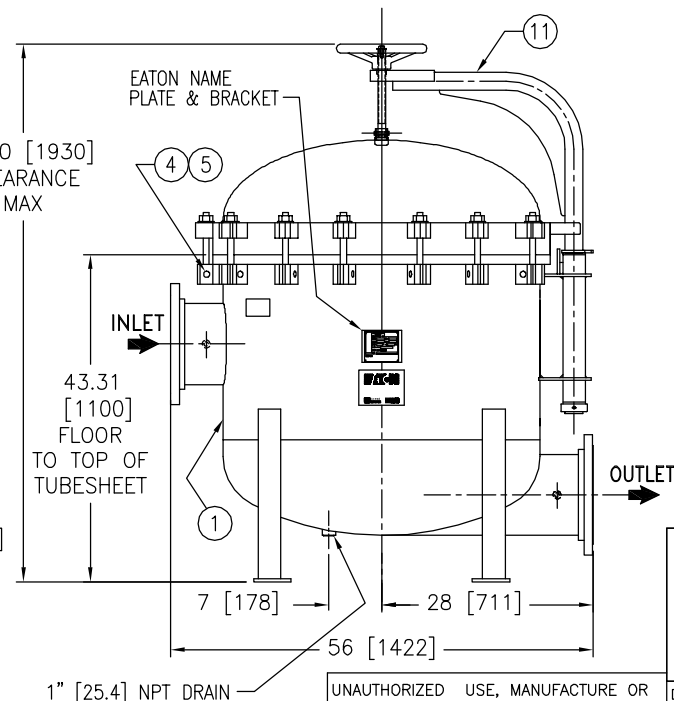
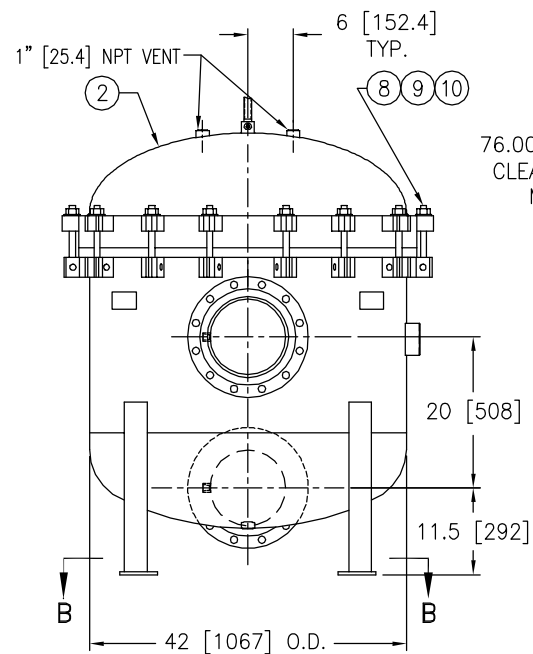
UNAUTHORIZED USE, MANUFACTURE OR REPRODUCTION IN WHOLE OR IN PART IS PROHIBITED. DRAWING, DESIGN AND OTHER DISCLOSURES PROPERTY OF EATON FILTRATION, LLC



(4) 7/8" ϕ [22 ϕ] BOLT HOLES
LOCATED AS SHOWN ON A
38.13 ϕ [969 ϕ] BOLT CIRCLE



SECTION B-B



ITEM	PART NAME	MATERIAL
1	BODY	SA240 316/316L
2	COVER	SA240 316/316L
3	O-RING	BUNA-N
4	PIN	SA193 B7 ZINC PL
5	SNAP RING	STEEL ZINC PL
6	BASKET RESTRAINER	316 SS
7	FILTER BAG RETAINER	316 SS
8	EYE BOLT	SA193 B7 ZINC PL
9	HEX NUT	SA194 2H ZINC PL
10	WASHER	STEEL ZINC PL
11	DAVIT ASSEMBLY	CARBON STEEL

NOTES:

- UNITS ARE TO BE DESIGNED, FABRICATED & "U" STAMPED IN ACCORDANCE WITH ASME SECT. VIII, DIV. 1 BOILER & PRESSURE VESSEL CODE, IN COMPLIANCE TO LATEST ADDENDA.
- INLET / OUTLET FLANGE CONNECTIONS PER ANSI B 16.5.
- DESIGN PRESSURE: 150 PSI (MAWP)
DESIGN TEMPERATURE 250° F.
MDMT - -20° F @ 150 PSI.
- ALL DIMENSIONS ARE IN INCHES / (MM).
- ALL BOLT HOLES ARE TO STRADDLE NATURAL CENTERLINES.
- APPROX. WEIGHT (DRY) 1800 LB. (816 KG.)

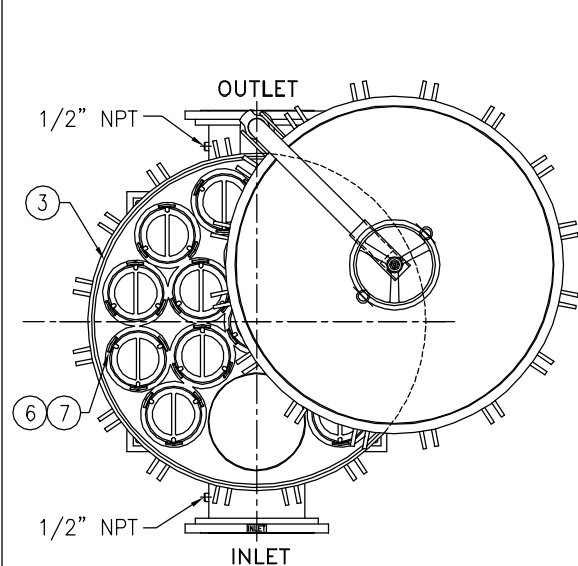
CERTIFIED FOR:
P.O. NO.:
SALES ORDER NO.:
QUOTE NO.:
TAG NO.:
VESSEL CODE: MBF-1402-AB10-100A-UT-11HD
PART NUMBER: F3AV1400003

EATON		EATON FILTRATION, LLC	
		900 FAIRMOUNT AVENUE, ELIZABETH, NEW JERSEY 07207	
NAME		MAXILINE MBF1402HD FILTER VESSEL	
		10" 150# RF INLET / TANGENTIAL OUTLET	
		STAINLESS STEEL	
DRAWN	VA	DATE	11/21/00
CERT.	LF	DATE	1/24/01
SIZE	DWG	HD1410TS	
A	NO		
			REV
			D

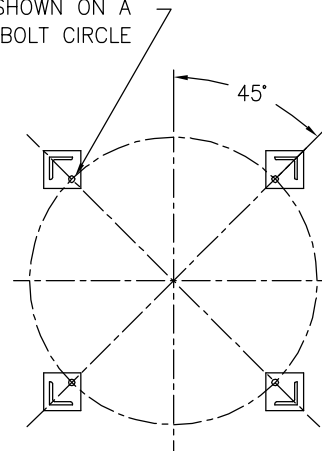
ELECTRONIC FILE NAME: HD1410TS.DWG

REF. ECR E822 DATE 09/18/07

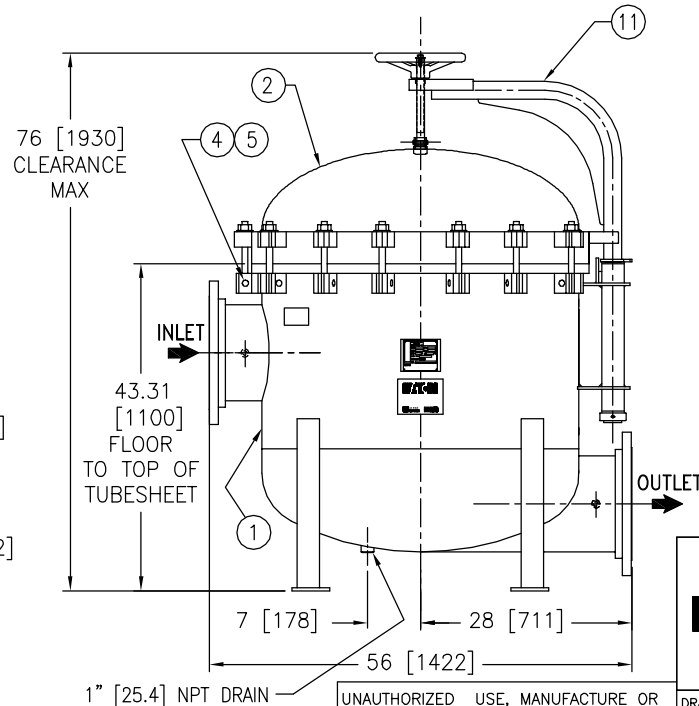
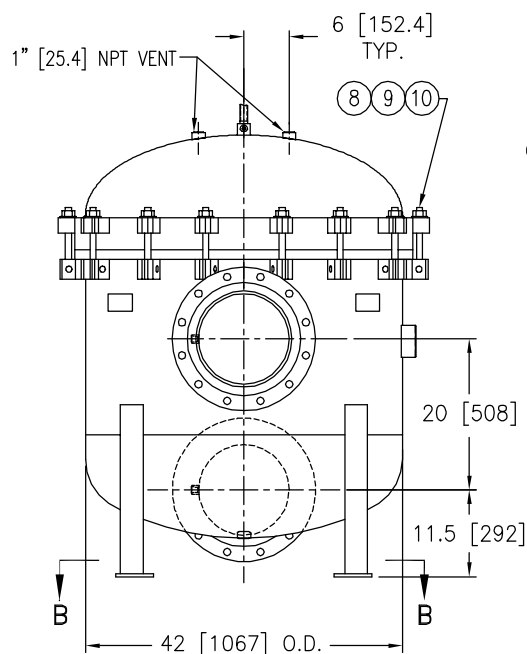
UNAUTHORIZED USE, MANUFACTURE OR REPRODUCTION IN WHOLE OR IN PART IS PROHIBITED. DRAWING, DESIGN AND OTHER DISCLOSURES PROPERTY OF EATON FILTRATION, LLC



(4) 7/8"Ø [22Ø] BOLT HOLES
LOCATED AS SHOWN ON A
38.13Ø [969Ø] BOLT CIRCLE



SECTION B-B



ITEM	PART NAME	MATERIAL
1	BODY	SA240 316/316L
2	COVER	SA240 316/316L
3	O-RING	BUNA-N
4	PIN	SA193 B7 ZINC PL
5	SNAP RING	STEEL ZINC PL
6	BASKET RESTRAINER	316 SS
7	FILTER BAG RETAINER	316 SS
8	EYE BOLT	SA193 B7 ZINC PL
9	HEX NUT	SA194 2H ZINC PL
10	WASHER	STEEL ZINC PL
11	DAVIT ASSEMBLY	CARBON STEEL

NOTES:

1. UNITS ARE TO BE DESIGNED, FABRICATED & "U" STAMPED IN ACCORDANCE WITH ASME SECT. VIII, DIV. 1 BOILER & PRESSURE VESSEL CODE, IN COMPLIANCE TO LATEST ADDENDA.
2. INLET / OUTLET FLANGE CONNECTIONS PER ANSI B 16.5.
3. DESIGN PRESSURE: 150 PSI (MAWP)
DESIGN TEMPERATURE 250° F.
MDMT - -20° F @ 150 PSI.
4. ALL DIMENSIONS ARE IN INCHES / (MM).
5. ALL BOLT HOLES ARE TO STRADDLE NATURAL CENTERLINES.
6. APPROX. WEIGHT (DRY) 1875 LB. (850 KG.)

CERTIFIED FOR:

P.O. NO.:

SALES ORDER NO.:

QUOTE NO.:

TAG NO.:

VESSEL CODE: MBF-1602-AB10-120A-UT-11HD

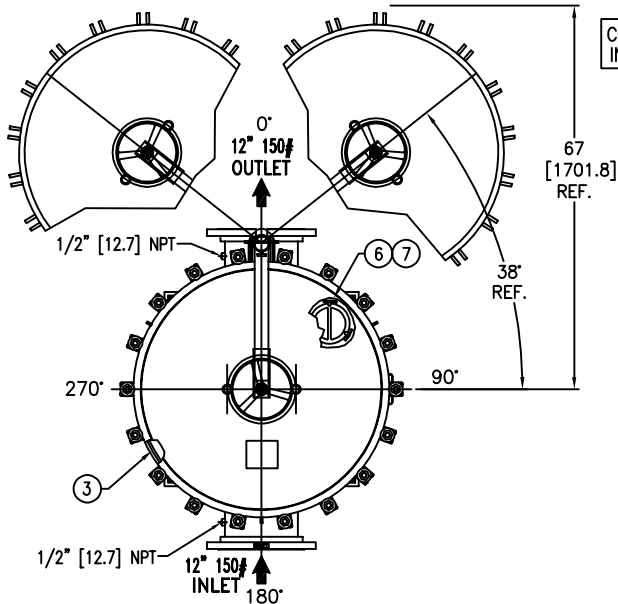
PART NUMBER: F3AV1600003

EATON		EATON FILTRATION, LLC 900 FAIRMOUNT AVENUE, ELIZABETH, NEW JERSEY 07207	
		NAME MAXILINE MBF1602HD FILTER VESSEL 12" 150# RF INLET / TANGENTIAL OUTLET STAINLESS STEEL	
DRAWN	VA	DATE	11/21/00
CERT.	LF	DATE	1/24/01
SIZE	AWG	HD1612TS	
A	NO		
REV			D

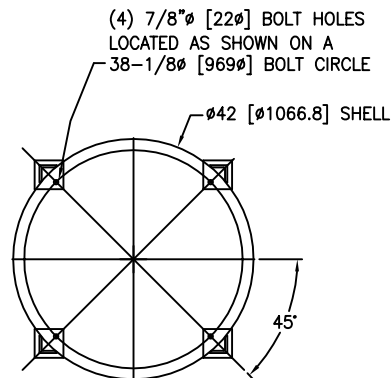
ELECTRONIC FILE NAME: HD1612TS.DWG

REF. ECR E824 DATE 09/19/07

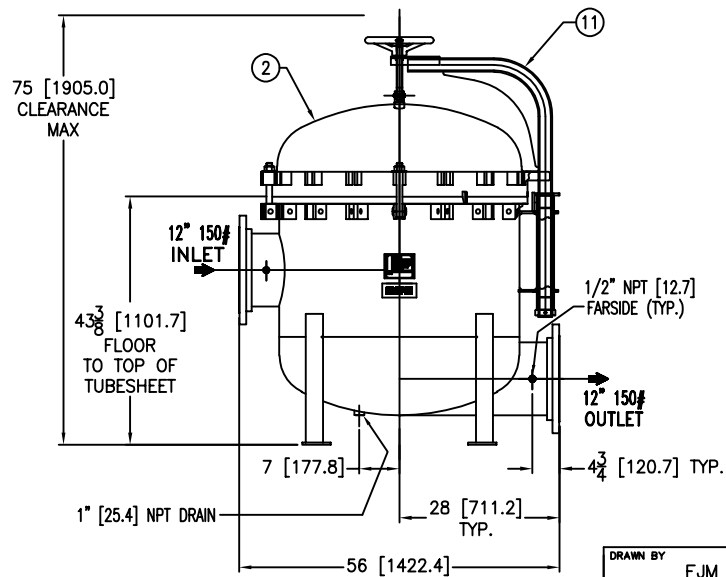
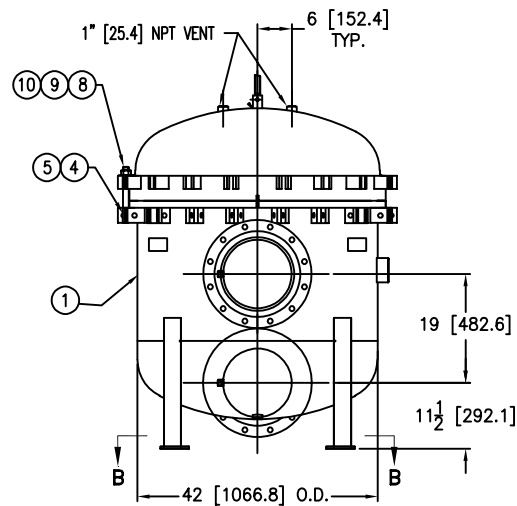
UNAUTHORIZED USE, MANUFACTURE OR REPRODUCTION IN WHOLE OR IN PART IS PROHIBITED. DRAWING, DESIGN AND OTHER DISCLOSURES PROPERTY OF EATON FILTRATION, LLC



COVER CAN SWING
IN BOTH DIRECTIONS



SECTION B-B



NOTES:

1. UNITS ARE TO BE DESIGNED, FABRICATED & "U" STAMPED IN ACCORDANCE WITH ASME SECT. VIII, DIV. 1 BOILER & PRESSURE VESSEL CODE, IN COMPLIANCE TO LATEST ADDENDA.
2. INLET / OUTLET FLANGE CONNECTIONS PER ANSI B 16.5.
3. DESIGN PRESSURE: 150 PSI (MAWP)
DESIGN TEMPERATURE 250° F.
MDMT - -20° F @ 150 PSI.
4. DIMENSIONS SHOWN IN [] ARE IN MILLIMETERS AND FOR REFERENCE ONLY. ACCEPTANCE OF THIS PART WILL BE BASED ON "INCH" UNITS & TOLERANCES ONLY.
5. ALL BOLT HOLES ARE TO STRADDLE NATURAL CENTERLINES.
6. APPROX. WEIGHT (DRY) 1875 LB. (850 KG.)
7. PAINT PER EATON STANDARD ES-301

REVISIONS

REV	DESCRIPTION	BY	ECO	DATE
A	NEW ISSUE	FJM	0073922	07/24/12
B	ENGINEERING CHANGES	FJM	0082198	02/27/13

ITEM	PART NAME	MATERIAL
1	BODY	SA240-316/316L
2	COVER	SA240-316/316L
3	O-RING P/N 2375035393	BUNA-N
4	PIN	SA193 B7 ZINC PL
5	SNAP RING	STEEL ZINC PL
6	BASKET RESTRAINER P/N L0001753	316 SS
7	FILTER BAG RETAINER	316 SS
8	EYE BOLT	SA193 B7 ZINC PL
9	HEX NUT	SA194 2H ZINC PL
10	WASHER	STEEL ZINC PL
11	DAVIT ASSEMBLY	CARBON STEEL

VESEL CODE: MBF-1802-AB10-120A-UT-13HD

DRAWN BY	FJM	EATON FILTRATION, LLC DESIGN CENTER ISELIN, NEW JERSEY, USA • PORTAGE, MICHIGAN, USA	
SCALE	AS DRAWN		
RESTRICTION	RESTRICTION	TITLE	MAXILINE (MBF-1802) FILTER VESSEL 12" 150# RF INLET/ TANGENTIAL OUTLET TYPE HD MAT'L. SS-316
SHEET	1 OF 1	DATE	07/24/12
PROJECTION	THIRD ANGLE	SIZE	A
		DWG FILENAME	HD1812TS-42
		REV	B

CUSTOMER INFO

NAME	
P.O. NO.	
S.O. NO.	
QUANTITY	
PART NO.	F3AV1800003-42

EATON CORPORATION - CONFIDENTIAL AND PROPRIETARY NOTICE TO PERSONS RECEIVING THIS DRAWING AND/OR TECHNICAL INFORMATION
THIS DOCUMENT, INCLUDING THE DRAWING AND INFORMATION CONTAINED THEREIN IS CONFIDENTIAL AND IS THE EXCLUSIVE PROPERTY OF EATON AT ANY TIME. BY TAKING THE
POSSESSION OF THIS DOCUMENT THE RECIPIENT ACKNOWLEDGES AND AGREES THAT THIS DOCUMENT CANNOT BE USED IN ANY MANNER ADVERSE TO THE INTEREST OF EATON AND
THAT NO PORTION OF THIS DRAWING MAY BE COPIED OR OTHERWISE REPRODUCED WITHOUT THE PRIOR WRITTEN CONSENT OF EATON, IN THE CASE OF COMPLETION CONTRACTUAL
PROVISIONS, THIS NOTICE SHALL GOVERN THE STATUS OF THIS DOCUMENT.
2013 EATON CORPORATION - ALL RIGHTS RESERVED.

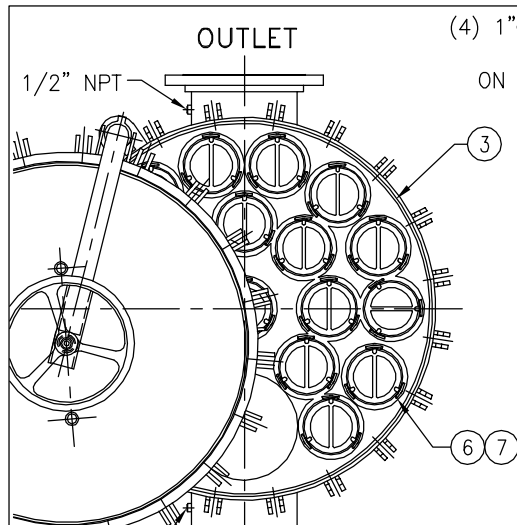
TOLERANCES (UNLESS OTHERWISE SPECIFIED)

DECIMAL:	.X ± .030 .XX ± .010 .XXX ± .005
FRACTIONAL:	1/16 ± 1/64 1/8 ± 1/32 3/16 ± 1/32 1/2 ± 1/32 3/4 ± 1/32
NOZZLE & TO FLOOR:	1/8" < 4" > 1/4"
FACE TO FACE:	1/8" < 4" > 1/4"
ANGULAR:	± 1°
FLANGES (H/V):	± 1/2"
VESSEL OVERALL HT:	1"

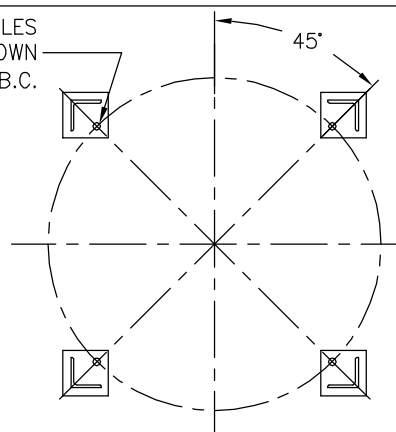
BOLT HOLES MUST STRADDLE &
MACHINED PARTS TO BE FREE OF BURRS
FOR ADDITIONAL TOLERANCE DETAILS
REF. ES-211, ES-222 AND ES-223

REVIEWED FOR CLASSIFICATION PER PR-4

CRITICAL SIGNIFICANT



(4) 1"Ø [22Ø] BOLT HOLES
LOCATED AS SHOWN
ON 44.13Ø [1121Ø] B.C.

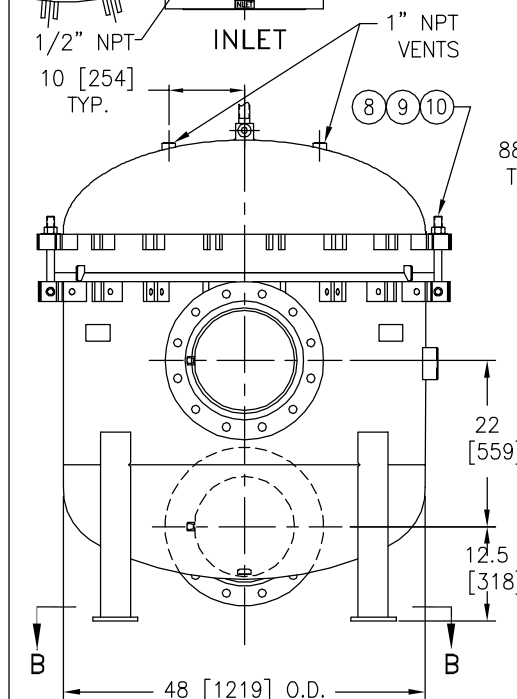


SECTION B-B

ITEM	PART NAME	MATERIAL
1	BODY	SA240 316/316L
2	COVER	SA240 316/316L
3	O-RING	BUNA-N
4	PIN	SA193 B7 ZINC PL
5	SNAP RING	STEEL ZINC PL
6	BASKET RESTRAINER	316 SS
7	FILTER BAG RETAINER	316 SS
8	EYE BOLT	SA193 B7 ZINC PL
9	HEX NUT	SA194 2H ZINC PL
10	WASHER	STEEL ZINC PL
11	DAVIT ASSEMBLY	CARBON STEEL

NOTES:

1. UNITS ARE TO BE DESIGNED, FABRICATED & "U" STAMPED IN ACCORDANCE WITH ASME SECT. VIII, DIV. 1 BOILER & PRESSURE VESSEL CODE, IN COMPLIANCE TO LATEST ADDENDA.
2. INLET / OUTLET FLANGE CONNECTIONS PER ANSI B 16.5.
3. DESIGN PRESSURE: 150 PSI (MAWP)
DESIGN TEMPERATURE 250° F.
MDMT - -20° F @ 150 PSI.
4. ALL DIMENSIONS ARE IN INCHES / (MM).
5. ALL BOLT HOLES ARE TO STRADDLE NATURAL CENTERLINES.
6. APPROX. WEIGHT (DRY) 2445 LB. (1109 KG.)



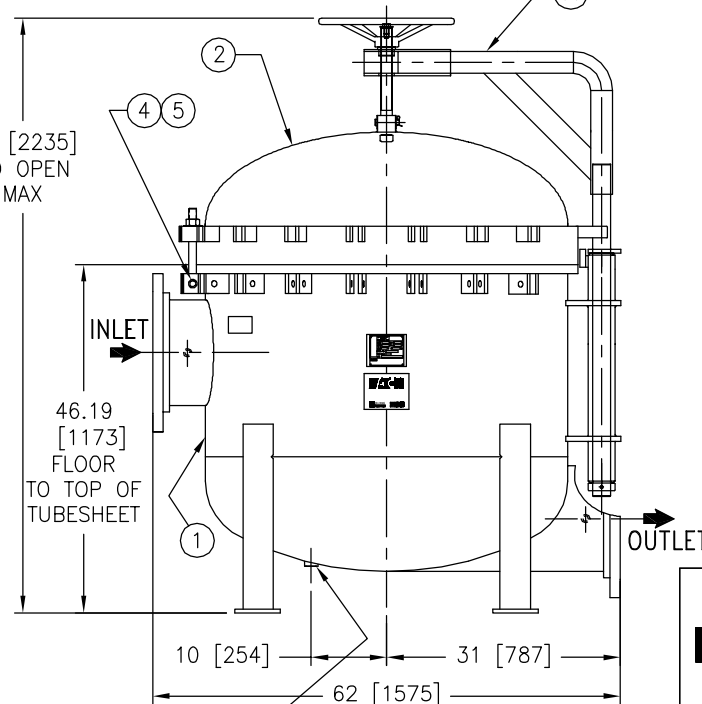
88 [2235]
TO OPEN
MAX

46.19 [1173]
FLOOR
TO TOP OF
TUBESHEET

1" [25.4] NPT DRAIN

ELECTRONIC FILE NAME: HD2014TS.DWG

REF. ECR E832 DATE 09/24/07



CERTIFIED FOR:

P.O. NO.:

SALES ORDER NO.:

QUOTE NO.:

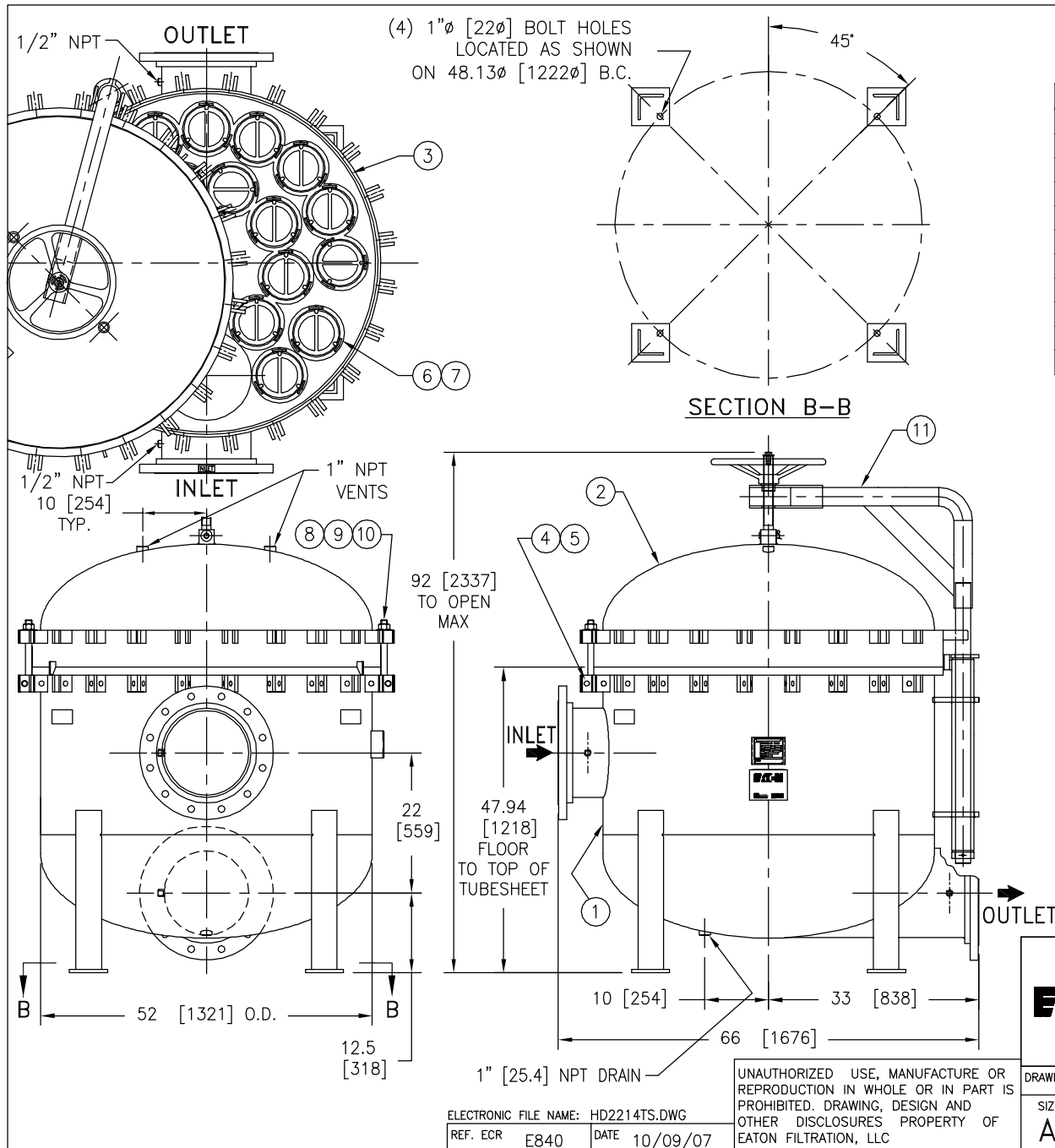
TAG NO.:

VESSEL CODE: MBF-2002-AB10-140A-UT-11HD

PART NUMBER: F3AV2000003

EATON		EATON FILTRATION, LLC 900 FAIRMOUNT AVENUE, ELIZABETH, NEW JERSEY 07207	
		NAME MAXILINE MBF2002HD FILTER VESSEL 14" 150# RF INLET / TANGENTIAL OUTLET STAINLESS STEEL	
DRAWN	SIGMA/KS	DATE	12/28/00
SIZE	DWG	CERT.	LF
A	NO	DATE	6/1/01
HD2014TS			REV
			D

UNAUTHORIZED USE, MANUFACTURE OR
REPRODUCTION IN WHOLE OR IN PART IS
PROHIBITED. DRAWING, DESIGN AND
OTHER DISCLOSURES PROPERTY OF
EATON FILTRATION, LLC



ITEM	PART NAME	MATERIAL
1	BODY	SA240 316/316L
2	COVER	SA240 316/316L
3	O-RING	BUNA-N
4	PIN	SA193 B7 ZINC PL
5	SNAP RING	STEEL ZINC PL
6	BASKET RESTRAINER	316 SS
7	FILTER BAG RETAINER	316 SS
8	EYE BOLT	SA193 B7 ZINC PL
9	HEX NUT	SA194 2H ZINC PL
10	WASHER	STEEL ZINC PL
11	DAVIT ASSEMBLY	CARBON STEEL

NOTES:

1. UNITS ARE TO BE DESIGNED, FABRICATED & "U" STAMPED IN ACCORDANCE WITH ASME SECT. VIII, DIV. 1 BOILER & PRESSURE VESSEL CODE, IN COMPLIANCE TO LATEST ADDENDA.
2. INLET / OUTLET FLANGE CONNECTIONS PER ANSI B 16.5.
3. DESIGN PRESSURE: 150 PSI (MAWP)
DESIGN TEMPERATURE 250° F.
MDMT - -20° F @ 150 PSI.
4. ALL DIMENSIONS ARE IN INCHES / (MM).
5. ALL BOLT HOLES ARE TO STRADDLE NATURAL CENTERLINES.
6. APPROX. WEIGHT (DRY) 2730 LB. (1238 KG.)

CERTIFIED FOR:

P.O. NO.:

REG. NO.:

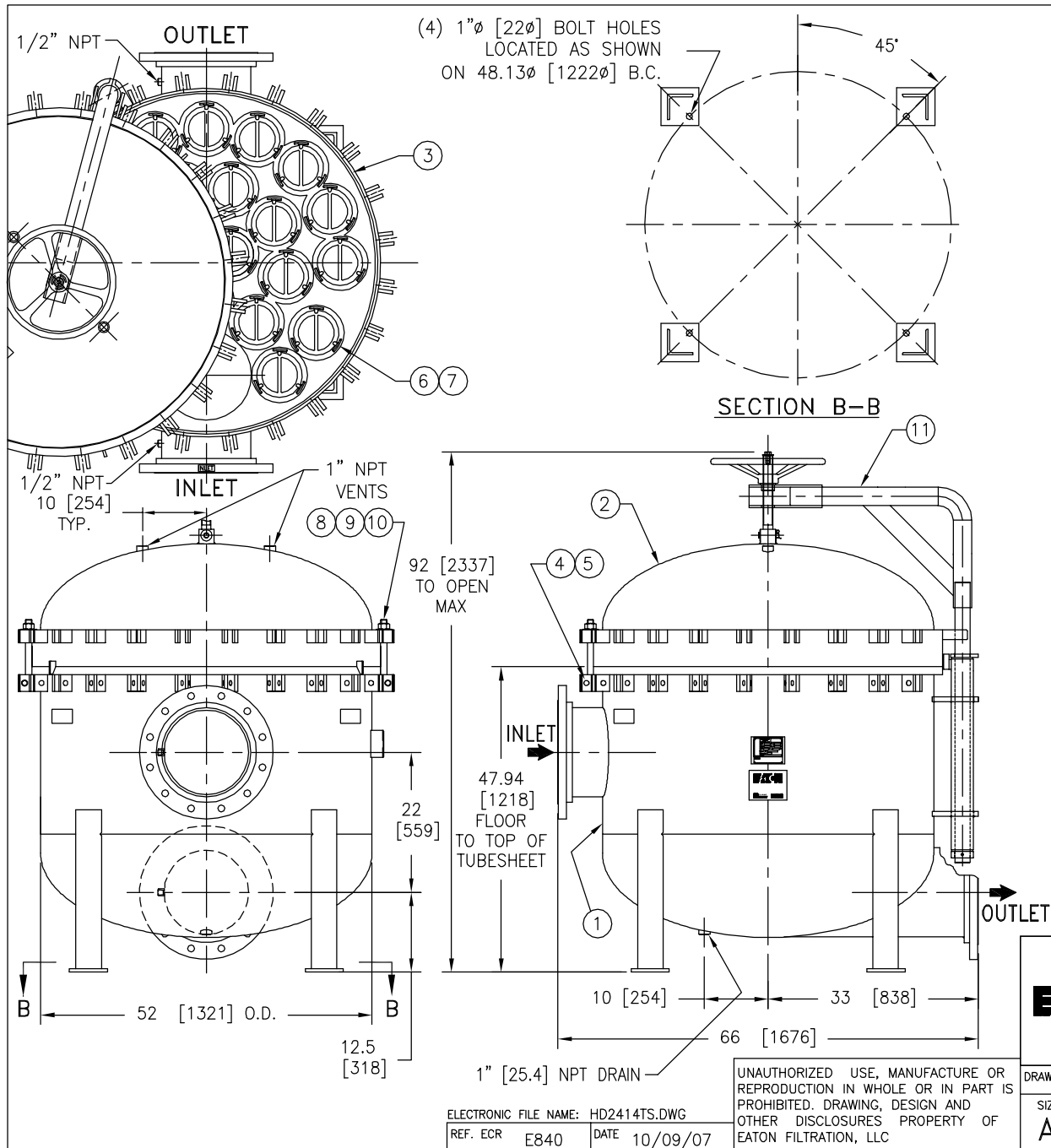
QUOTE NO.:

TAG NO.:

VESSEL CODE: MBF-2202-AB10-140A-UT-11HD

PART NUMBER: F3AV2200003

EATON		EATON FILTRATION, LLC 900 FAIRMOUNT AVENUE, ELIZABETH, NEW JERSEY 07207	
		NAME MAXILINE MBF2202HD FILTER VESSEL 14" 150# RF INLET / TANGENTIAL OUTLET STAINLESS STEEL	
DRAWN	SIGMA/ID	DATE	12/28/00
CERT.	LF	DATE	5/1/01
SIZE	DWG	HD2214TS	
A	NO		
REV	D		



ITEM	PART NAME	MATERIAL
1	BODY	SA240 316/316L
2	COVER	SA240 316/316L
3	O-RING	BUNA-N
4	PIN	SA193 B7 ZINC PL
5	SNAP RING	STEEL ZINC PL
6	BASKET RESTRAINER	316 SS
7	FILTER BAG RETAINER	316 SS
8	EYE BOLT	SA193 B7 ZINC PL
9	HEX NUT	SA194 2H ZINC PL
10	WASHER	STEEL ZINC PL
11	DAVIT ASSEMBLY	CARBON STEEL

NOTES:

1. UNITS ARE TO BE DESIGNED, FABRICATED & "U" STAMPED IN ACCORDANCE WITH ASME SECT. VIII, DIV. 1 BOILER & PRESSURE VESSEL CODE, IN COMPLIANCE TO LATEST ADDENDA.
2. INLET / OUTLET FLANGE CONNECTIONS PER ANSI B 16.5.
3. DESIGN PRESSURE: 150 PSI (MAWP)
DESIGN TEMPERATURE 250° F.
MDMT - -20° F @ 150 PSI.
4. ALL DIMENSIONS ARE IN INCHES / (MM).
5. ALL BOLT HOLES ARE TO STRADDLE NATURAL CENTERLINES.
6. APPROX. WEIGHT (DRY) 2730 LB. (1238 KG.)

CERTIFIED FOR:

P.O. NO.:

SALES ORDER NO.:

QUOTE NO.:

TAG NO.:

VESSEL CODE: MBF-2402-AB10-140A-UT-11HD

PART NUMBER: F3AV2400003

		EATON FILTRATION, LLC 900 FAIRMOUNT AVENUE, ELIZABETH, NEW JERSEY 07207	
		NAME MAXILINE MBF2402HD FILTER VESSEL 14" 150# RF INLET / TANGENTIAL OUTLET STAINLESS STEEL	
DRAWN	SIGMA/ID	DATE	12/28/00
CERT.	LF	DATE	5/1/01
SIZE	DWG	HD2414TS	
A	NO		
REV	E		