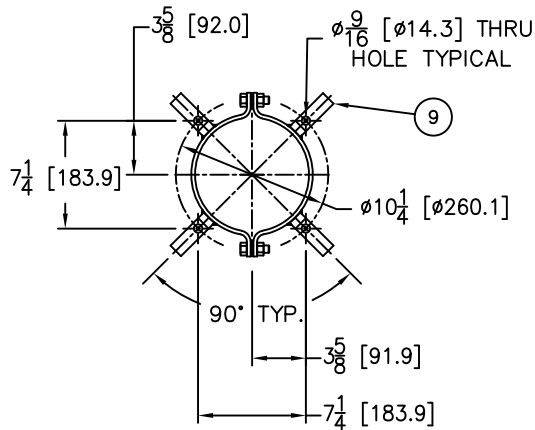
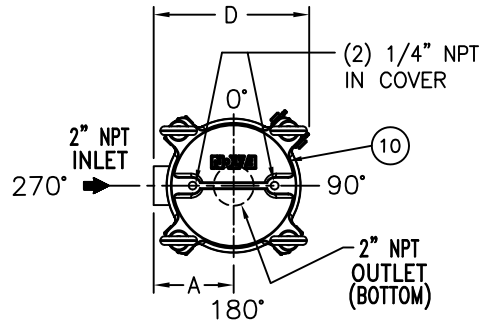


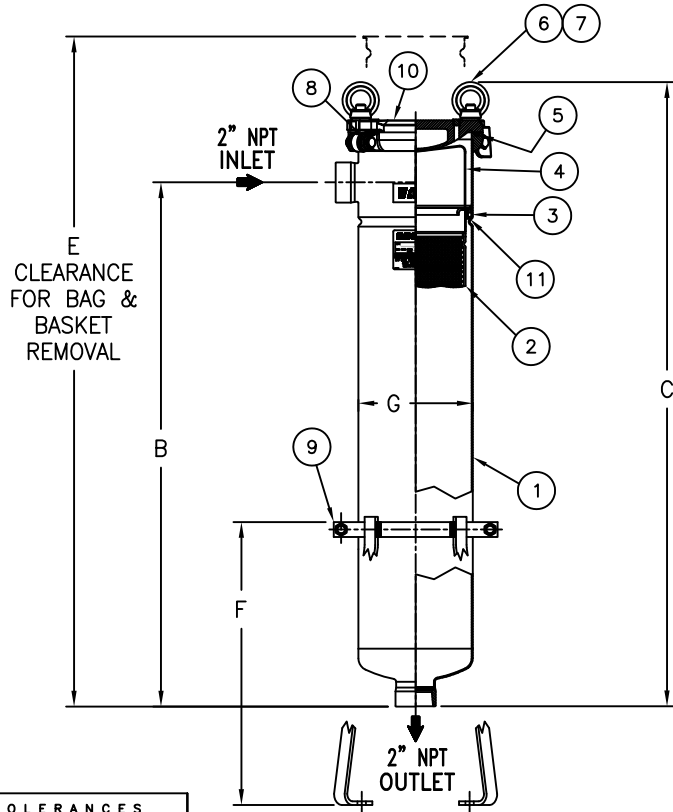
ITEM NUMBER	BAG SIZE	IN. / MM A	IN. / MM B	IN. / MM C	IN. / MM D	IN. / MM E	IN. / MM F	IN. / MM G	WEIGHT LBS / KGS
F3AVFB0005	01	5-3/8 / 136.5	19-5/8 / 498.4	26-3/8 / 669.9	10-7/16 / 265.1	39/ 990.6	19-1/4 / 489	7-11/16 / 195	30 / 13.6
F3AVFB0006	02	5-3/8 / 136.5	35-3/16 / 893.7	41-15/16 / 1065.2	10-7/16 / 265.1	69/ 1752.6	19-1/4 / 489	7-11/16 / 195	43 / 19.5



MOUNTING DETAIL

REVISIONS				
REV	DESCRIPTION	BY	ECO	DATE
J	UPDATED DRAWING	FJM	0087541	07/23/13

NO.	PART NAME	MATERIAL
1	BODY	CARBON STEEL
2	RESTRAINER BASKET 01 SIZE P/N L0001752 02 SIZE P/N L0001753	316 STAINLESS STEEL
3	ADAPTOR O-RING P/N X811441	BUNA-N
4	BAG HOLD DOWN	304 STAINLESS STEEL
5	O-RING P/N X811445	BUNA-N
6	EYE BOLT	STEEL, ZINC PLATED
7	EYE NUT	STEEL, ZINC PLATED
8	PIN	STAINLESS STEEL
9	ADJUSTABLE LEGS P/N L0002939SA-CSTL	CARBON STEEL EPOXY COATED
10	COVER	CARBON STEEL
11	ADAPTOR PLATE	304 STAINLESS STEEL



Quick & Discounted Pricing
[Click Here](#)
Or Call 908.362.9981

NOTES:

1. INLET/OUTLET "NPT" THREADED CONNECTIONS PER ANSI B1.20.1
2. MAWP: 150 PSI @ 250° F MDMT: -20° F @ 150 PSI
(10.3 BAR @ 121.1° C) (-28.9° C @ 10.3 BAR)
3. MAXIMUM OPERATING TEMP. 400° F (204.4° C) WITH VITON O-RING.
4. DIMENSIONS SHOWN IN [] ARE IN MILLIMETERS AND FOR REFERENCE ONLY.
ACCEPTANCE OF THIS PART WILL BE BASED ON "INCH" UNITS & TOLERANCES ONLY.
5. PAINT C/STL. PER EATON STANDARD ES-301.

VESSEL CODE 01 SIZE: FBF-0101-CS10-020N-NS-B-NCS

VESSEL CODE 02 SIZE: FBF-0102-CS10-020N-NS-B-NCS

DRAWN BY	LF
SCALE	AS DRAWN
RESTRICTION	RESTRICTION
SHEET	1 OF 1
PROJECTION	THIRD ANGLE

EATON EATON FILTRATION, LLC
DESIGN CENTER
TINTON FALLS, NEW JERSEY, USA • PORTAGE, MICHIGAN, USA

TITLE FLOWLINE (FBF) BAG FILTER VESSEL
2" NPT THREADED IN/OUT CONNECTIONS
CARBON STEEL W/BUNA O-RINGS

DATE	SIZE	DWG FILENAME	REV
10/20/00	A	FBF11XC	J

TOLERANCES (UNLESS OTHERWISE SPECIFIED)	
DECIMAL:	.XX ± .030 .XXX ± .010 .XXX ± .005
FRACTIONAL:	± 1/16
NOZZLE Ø TO FLOOR:	1/8" < 4' > 1/4"
FACE TO FACE:	1/8" < 4' > 1/4"
ANGULAR:	± 1°
FLANGES (H/V):	± 1/2"
VESSEL OVERALL HT:	1"

BOLT HOLES MUST STRADDLE &
MACHINED PARTS TO BE FREE OF BURRS
FOR ADDITIONAL TOLERANCE DETAILS
REF. ES-211, ES-222 AND ES-223

REVIEWED FOR CLASSIFICATION PER PR-4
CRITICAL SIGNIFICANT

CUSTOMER INFO	
NAME	
P.O. NO.	
S.O. NO.	
QUANTITY	
PART NO.	

EATON CORPORATION - CONFIDENTIAL AND PROPRIETARY NOTICE TO PERSONS RECEIVING THIS DRAWING AND/OR TECHNICAL INFORMATION
THIS DOCUMENT, INCLUDING THE DRAWING AND INFORMATION CONTAINED THEREON IS CONFIDENTIAL AND IS THE EXCLUSIVE PROPERTY OF EATON AT ANY TIME. BY TAKING THE
POSSESSION OF THIS DOCUMENT THE RECIPIENT ACKNOWLEDGES AND AGREES THAT THIS DOCUMENT CANNOT BE USED IN ANY MANNER ADVERSE TO THE INTEREST OF EATON AND
THAT NO PORTION OF THIS DRAWING MAY BE COPIED OR OTHERWISE REPRODUCED WITHOUT THE PRIOR WRITTEN CONSENT OF EATON, IN THE CASE OF CONFLICT CONTRACTUAL
PROVISIONS, THIS NOTICE SHALL GOVERN THE STATUS OF THIS DOCUMENT.
2013 EATON CORPORATION - ALL RIGHTS RESERVED.

ITEM NUMBER	BAG SIZE	A IN. / MM	B IN. / MM	C IN. / MM	D IN. / MM	E IN. / MM	F IN. / MM	G IN. / MM	WEIGHT LBS / KGS
F3AVFB0007	01	6-11/16 / 170	20-3/4 / 527	27-9/16 / 700	11-3/4 / 298.4	38/ 965.2	19-1/4 / 489	7-11/16 / 195	40 / 18.1
F3AVFB0008	02	6-11/16 / 170	36-5/16 / 922.3	43-1/8 / 1095.3	11-3/4 / 298.4	69/ 1752.6	19-1/4 / 489	7-11/16 / 195	53 / 24

Top view and mounting detail of the filter vessel. Dimensions A, B, C, D, E, F, G are indicated. Inlet is 2 inch 150# flanged, outlet is 2 inch 150# flanged. Cover has (2) 1/4 inch NPT in cover. Mounting detail shows 90 degree typical angle and 7 1/4 inch dimension.

REVISIONS				
REV	DESCRIPTION	BY	ECO	DATE
J	UPDATED DRAWING	FJM	0087541	07/23/13

NO.	PART NAME	MATERIAL
1	BODY	CARBON STEEL
2	RESTRAINER BASKET 01 SIZE P/N L0001752 02 SIZE P/N L0001753	316 STAINLESS STEEL
3	ADAPTOR O-RING P/N X811441	BUNA-N
4	BAG HOLD DOWN	304 STAINLESS STEEL
5	O-RING P/N X811445	BUNA-N
6	EYE BOLT	STEEL, ZINC PLATED
7	EYE NUT	STEEL, ZINC PLATED
8	PIN	STAINLESS STEEL
9	ADJUSTABLE LEGS P/N L0002939SA-CSTL	CARBON STEEL EPOXY COATED
10	COVER	CARBON STEEL
11	ADAPTOR PLATE	304 STAINLESS STEEL

NOTES:

- INLET/OUTLET FLANGED CONNECTIONS PER ANSI B16.5
- MAWP: 150 PSI @ 250° F MDMT: -20° F @ 150 PSI
(10.3 BAR @ 121.1° C) (-28.9° C @ 10.3 BAR)
- MAXIMUM OPERATING TEMP. 400° F (204.4° C) WITH VITON O-RING.
- DIMENSIONS SHOWN IN [] ARE IN MILLIMETERS AND FOR REFERENCE ONLY. ACCEPTANCE OF THIS PART WILL BE BASED ON "INCH" UNITS & TOLERANCES ONLY.
- PAINT C/STL. PER EATON STANDARD ES-301.

Quick & Discounted Pricing

Click Here

Or Call 908.362.9981

CUSTOMER INFO	
NAME	
P.O. NO.	
S.O. NO.	
QUANTITY	
PART NO.	

DRAWN BY	
SCALE	
RESTRICTION	
SHEET	
PROJECTION	
FM	
AS DRAWN	
RESTRICTION	
1 OF 1	
THIRD ANGLE	

VESSEL CODE 01 SIZE: FBF-0101-CS10-020A-NS-B-NCS	
VESSEL CODE 02 SIZE: FBF-0102-CS10-020A-NS-B-NCS	
EATON EATON FILTRATION, LLC DESIGN CENTER TINTON FALLS, NEW JERSEY, USA • PORTAGE, MICHIGAN, USA	
TITLE FLOWLINE (FBF) BAG FILTER VESSEL 2" 150# FLANGED IN/OUT CONNECTIONS CARBON STEEL W/BUNA O-RINGS	
DATE 10/20/00	SIZE A
DWG FILENAME FBF11XCF	
REV J	

TOLERANCES
(UNLESS OTHERWISE SPECIFIED)

DECIMAL: .XX ± .010
.XXX ± .005

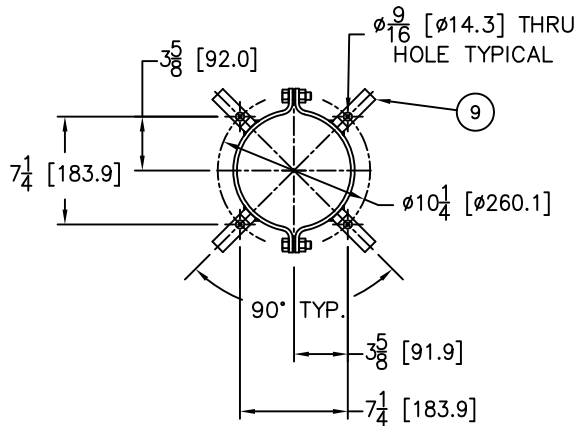
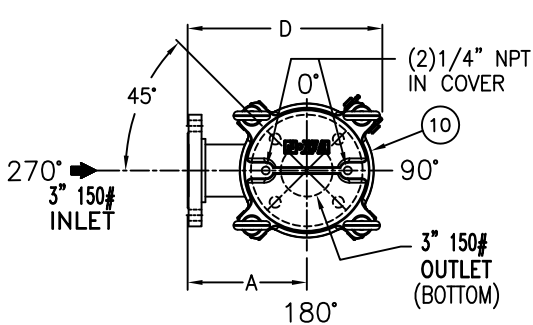
FRACTIONAL: ± 1/16
NOZZLE & TO FLOOR: 1/8" < 4' > 3/4"
FACE TO FACE: 1/8" < 4' > 3/4"
ANGULAR: ± 1°
FLANGES (H/V): ± 1/2"
VESSEL OVERALL HT: 1"

BOLT HOLES MUST STRADDLE & MACHINED PARTS TO BE FREE OF BURRS FOR ADDITIONAL TOLERANCE DETAILS REF. ES-211, ES-222 AND ES-223

REVIEWED FOR CLASSIFICATION PER PR-4

CRITICAL SIGNIFICANT

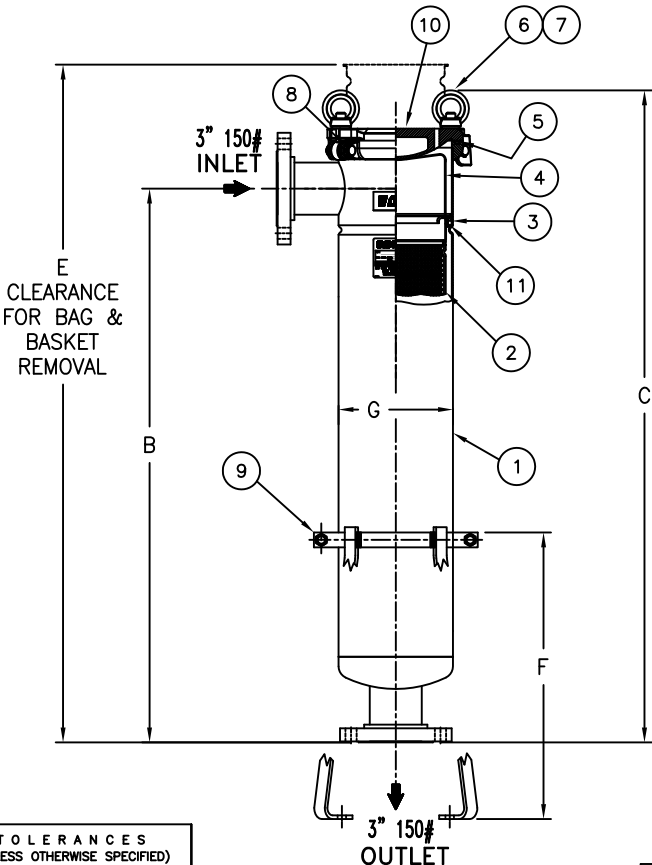
ITEM NUMBER	BAG SIZE	IN. / MM A	IN. / MM B	IN. / MM C	IN. / MM D	IN. / MM E	IN. / MM F	IN. / MM G	WEIGHT LBS / KGS
F3AVFB0009	02	8 / 203	37-3/16 / 944	43-3/4 / 1111	13-1/16 / 331	70-1/4 / 1784	19-1/4 / 489	7-11/16 / 195	61 / 27.6



MOUNTING DETAIL

R E V I S I O N S				
REV	DESCRIPTION	BY	ECO	DATE
D	UPDATED DRAWING	FJM	0087541	07/23/13

NO.	PART NAME	MATERIAL
1	BODY	CARBON STEEL
2	RESTRAINER BASKET P/N L0001753	316 STAINLESS STEEL
3	ADAPTOR O-RING P/N X811441	BUNA
4	BAG HOLD DOWN	316 STAINLESS STEEL
5	O-RING P/N X811445	BUNA
6	EYE BOLT	STEEL, ZINC PLATED
7	EYE NUT	STEEL, ZINC PLATED
8	PIN	STAINLESS STEEL
9	ADJUSTABLE LEGS P/N L0002939SA-CSTL	CARBON STEEL EPOXY COATED
10	COVER	CARBON STEEL
11	ADAPTOR PLATE	304 STAINLESS STEEL



- NOTES:
1. INLET/OUTLET FLANGED CONNECTIONS ARE PER ANSI B16.5
 2. MAWP: 150 PSI @ 250° F MDMT: -20° F @ 150 PSI
(10.3 BAR @ 121.1° C) (-28.9° C @ 10.3 BAR)
 3. MAXIMUM OPERATING TEMP. 400° F (204.4° C) WITH VITON O-RING.
 4. DIMENSIONS SHOWN IN [] ARE IN MILLIMETERS AND FOR REFERENCE ONLY.
ACCEPTANCE OF THIS PART WILL BE BASED ON "INCH" UNITS & TOLERANCES ONLY.
 5. PAINT CARBON STEEL PER EATON STANDARD ES-301

Quick & Discounted Pricing
[Click Here](#)
Or Call 908.362.9981

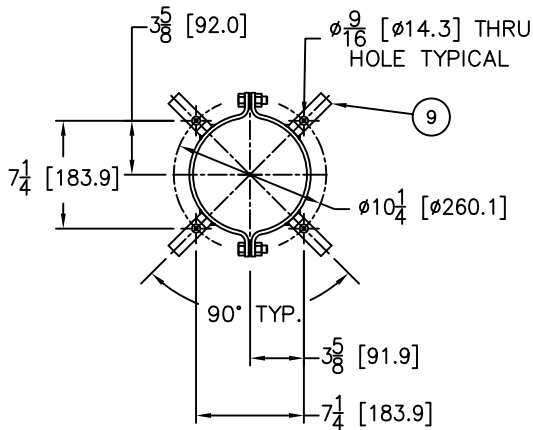
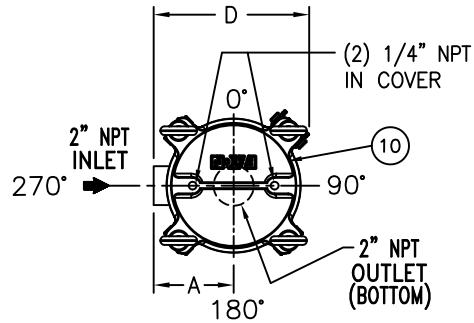
TOLERANCES (UNLESS OTHERWISE SPECIFIED)	
DECIMAL:	.XX ± .030 .XX ± .010 .XXX ± .005
FRACTIONAL:	± 1/16
NOZZLE & TO FLOOR:	1/8" < 4' > 1/4"
FACE TO FACE:	1/8" < 4' > 1/4"
ANGULAR:	± 1'
FLANGES (H/V):	± 1/2"
VESSEL OVERALL HT:	1"

REVIEWED FOR CLASSIFICATION PER PR-4
CRITICAL SIGNIFICANT

CUSTOMER INFO	
NAME	
P.O. NO.	
S.O. NO.	
QUANTITY	
PART NO.	F3AVFB0009

DRAWN BY FJM		VESSEL CODE: FBF-0102-CS10-030A-NS-B-NCS			
SCALE AS DRAWN		<div>EATON</div> <div>EATON FILTRATION, LLC DESIGN CENTER TINTON FALLS, NEW JERSEY, USA • PORTAGE, MICHIGAN, USA</div>			
RESTRICTION RESTRICTION		TITLE FLOWLINE (FBF-0102) BAG FILTER VESSEL 3" 150# RF FLANGED IN/OUT CONNECTIONS CARBON STEEL W/BUNA O-RINGS			
SHEET 1 OF 1					
PROJECTION THIRD ANGLE		DATE 06/09/04	SIZE A	DWG FILENAME FBF02XCF-3	REV D
EATON CORPORATION - CONFIDENTIAL AND PROPRIETARY NOTICE TO PERSONS RECEIVING THIS DRAWING AND/OR TECHNICAL INFORMATION THIS DOCUMENT, INCLUDING THE DRAWING AND INFORMATION CONTAINED HEREIN IS THE EXCLUSIVE PROPERTY OF EATON AT ANY TIME. BY TAKING THE POSSESSION OF THIS DOCUMENT THE RECIPIENT ACKNOWLEDGES AND AGREES THAT THIS DOCUMENT CANNOT BE USED IN ANY MANNER ADVERSE TO THE INTEREST OF EATON AND THAT NO PORTION OF THIS DRAWING MAY BE COPIED OR OTHERWISE REPRODUCED WITHOUT THE PRIOR WRITTEN CONSENT OF EATON, IN THE CASE OF CONFLICTION CONTRACTUAL PROVISIONS, THIS NOTICE SHALL GOVERN THE STATUS OF THIS DOCUMENT. 2013 EATON CORPORATION - ALL RIGHTS RESERVED.					

ITEM NUMBER	BAG SIZE	IN. / MM A	IN. / MM B	IN. / MM C	IN. / MM D	IN. / MM E	IN. / MM F	IN. / MM G	WEIGHT LBS / KGS
FBF0111SB02T	01	5-3/8 / 136.5	19-5/8 / 498.4	26-3/8 / 669.9	10-7/16 / 265.1	39/ 990.6	19-1/4 / 489	7-11/16 / 195	30 / 13.6
FBF0112SB02T	02	5-3/8 / 136.5	35-3/16 / 893.7	41-15/16 / 1065.2	10-7/16 / 265.1	69/ 1752.6	19-1/4 / 489	7-11/16 / 195	43 / 19.5



MOUNTING DETAIL

REVISIONS				
REV	DESCRIPTION	BY	ECO	DATE
L	UPDATED DRAWING	FJM	0087541	07/23/13

NO.	PART NAME	MATERIAL
1	BODY	316 STAINLESS STEEL
2	RESTRAINER BASKET 01 SIZE P/N L0001752 02 SIZE P/N L0001753	316 STAINLESS STEEL
3	ADAPTOR O-RING P/N X811441	BUNA-N
4	BAG HOLD DOWN	316 STAINLESS STEEL
5	O-RING P/N X811445	BUNA-N
6	EYE BOLT	STEEL, ZINC PLATED
7	EYE NUT	STEEL, ZINC PLATED
8	PIN	STAINLESS STEEL
9	ADJUSTABLE LEGS P/N L0002939SA-CSTL	CARBON STEEL EPOXY COATED
10	COVER	316 STAINLESS STEEL
11	ADAPTOR PLATE	316 STAINLESS STEEL

NOTES:

- INLET/OUTLET "NPT" THREADED CONNECTIONS PER ANSI B1.20.1
- MAWP: 150 PSI @ 250° F MDMT: -20° F @ 150 PSI
(10.3 BAR @ 121.1° C) (-28.9° C @ 10.3 BAR)
- MAXIMUM OPERATING TEMP. 400° F (204.4° C) WITH VITON O-RING.
- DIMENSIONS SHOWN IN [] ARE IN MILLIMETERS AND FOR REFERENCE ONLY.
ACCEPTANCE OF THIS PART WILL BE BASED ON "INCH" UNITS & TOLERANCES ONLY.

Quick & Discounted Pricing
[Click Here](#)
Or Call 908.362.9981

VESSEL CODE 01 SIZE: FBF-0101-AB10-020N-NS-B-NCS				
VESSEL CODE 02 SIZE: FBF-0102-AB10-020N-NS-B-NCS				
EATON EATON FILTRATION, LLC DESIGN CENTER TINTON FALLS, NEW JERSEY, USA • PORTAGE, MICHIGAN, USA				
TITLE FLOWLINE (FBF) BAG FILTER VESSEL 2" NPT THREADED IN/OUT CONNECTIONS SS-316 W/BUNA O-RINGS				
DRAWN BY LF	SCALE AS DRAWN	RESTRICTION RESTRICTION	SHEET 1 OF 1	PROJECTION THIRD ANGLE
DATE 08/27/99	SIZE A	DWG FILENAME FBF11XS	REV L	

TOLERANCES (UNLESS OTHERWISE SPECIFIED)	
DECIMAL:	.XX ± .030 .XX ± .010 .XXX ± .005
FRACTIONAL:	± 1/16
NOZZLE Ø TO FLOOR:	1/8" < 4' > 3/4"
FACE TO FACE:	1/8" < 4' > 3/4"
ANGULAR:	± 1'
FLANGES (H/V):	± 1/2"
VESSEL OVERALL HT:	1"
BOLT HOLES MUST STRADDLE Ø MACHINED PARTS TO BE FREE OF BURRS FOR ADDITIONAL TOLERANCE DETAILS REF. ES-211, ES-222 AND ES-223	

REVIEWED FOR CLASSIFICATION PER PR-4
CRITICAL SIGNIFICANT

CUSTOMER INFO	
NAME	
P.O. NO.	
S.O. NO.	
QUANTITY	
PART NO.	

DRAWN BY LF
SCALE AS DRAWN
RESTRICTION RESTRICTION
SHEET 1 OF 1
PROJECTION THIRD ANGLE

EATON CORPORATION - CONFIDENTIAL AND PROPRIETARY NOTICE TO PERSONS RECEIVING THIS DRAWING AND/OR TECHNICAL INFORMATION
THIS DOCUMENT, INCLUDING THE DRAWING AND INFORMATION CONTAINED THEREON IS CONFIDENTIAL AND IS THE EXCLUSIVE PROPERTY OF EATON AT ANY TIME. BY TAKING THE
POSSESSION OF THIS DOCUMENT THE RECIPIENT ACKNOWLEDGES AND AGREES THAT THIS DOCUMENT CANNOT BE USED IN ANY MANNER ADVERSE TO THE INTEREST OF EATON AND
THAT NO PORTION OF THIS DRAWING MAY BE COPIED OR OTHERWISE REPRODUCED WITHOUT THE PRIOR WRITTEN CONSENT OF EATON, IN THE CASE OF CONFLICT OF CONTRACTUAL
PROVISIONS, THIS NOTICE SHALL GOVERN THE STATUS OF THIS DOCUMENT.
2013 EATON CORPORATION - ALL RIGHTS RESERVED.

ITEM NUMBER	BAG SIZE	A IN. / MM	B IN. / MM	C IN. / MM	D IN. / MM	E IN. / MM	F IN. / MM	G IN. / MM	WEIGHT LBS / KGS
FBF0111SB02F	01	6-11/16 / 170	20-3/4 / 527	27-9/16 / 700	11-3/4 / 298.4	38/ 965.2	19-1/4 / 489	7-11/16 / 195	40 / 18.1
FBF0112SB02F	02	6-11/16 / 170	36-5/16 / 922.3	43-1/8 / 1095.3	11-3/4 / 298.4	69/ 1752.6	19-1/4 / 489	7-11/16 / 195	53 / 24

Top view and mounting detail of the vessel. Dimensions A, B, C, D, E, F, G are indicated. Inlet is 2 inch 150# flanged, outlet is 2 inch 150# flanged. Cover has (2) 1/4 inch NPT in cover. Mounting detail shows 9 eye bolts and 7/4 inch mounting holes.

REVISIONS				
REV	DESCRIPTION	BY	ECO	DATE
J	UPDATED DRAWING	FJM	0087541	07/23/13

NO.	PART NAME	MATERIAL
1	BODY	316 STAINLESS STEEL
2	RESTRAINER BASKET 01 SIZE P/N L0001752 02 SIZE P/N L0001753	316 STAINLESS STEEL
3	ADAPTOR O-RING P/N X811441	BUNA-N
4	BAG HOLD DOWN	316 STAINLESS STEEL
5	O-RING P/N X811445	BUNA-N
6	EYE BOLT	STEEL, ZINC PLATED
7	EYE NUT	STEEL, ZINC PLATED
8	PIN	STAINLESS STEEL
9	ADJUSTABLE LEGS P/N L0002939SA-CSTL	CARBON STEEL EPOXY COATED
10	COVER	316 STAINLESS STEEL
11	ADAPTOR PLATE	316 STAINLESS STEEL

NOTES:

- INLET/OUTLET FLANGED CONNECTIONS PER ANSI B16.5
- MAWP: 150 PSI @ 250° F MDMT: -20° F @ 150 PSI
(10.3 BAR @ 121.1° C) (-28.9° C @ 10.3 BAR)
- MAXIMUM OPERATING TEMP. 400° F (204.4° C) WITH VITON O-RING.
- DIMENSIONS SHOWN IN [] ARE IN MILLIMETERS AND FOR REFERENCE ONLY. ACCEPTANCE OF THIS PART WILL BE BASED ON "INCH" UNITS & TOLERANCES ONLY.

Quick & Discounted Pricing

Click Here

Or Call 908.362.9981

TOLERANCES (UNLESS OTHERWISE SPECIFIED)	
DECIMAL:	.XX ± .030 .XX ± .010 .XXX ± .005
FRACTIONAL:	± 1/16
NOZZLE Ø TO FLOOR:	1/8" < 4' > 1/4"
FACE TO FACE:	1/8" < 4' > 1/4"
ANGULAR:	± 1'
FLANGES (H/V):	± 1/2"
VESSEL OVERALL HT:	1"

BOLT HOLES MUST STRADDLE Ø
MACHINED PARTS TO BE FREE OF BURRS
FOR ADDITIONAL TOLERANCE DETAILS
REF. ES-211, ES-222 AND ES-223

CUSTOMER INFO	
NAME	
P.O. NO.	
S.O. NO.	
QUANTITY	
PART NO.	

DRAWN BY	
LF	
SCALE	
AS DRAWN	
RESTRICTION	
RESTRICTION	
SHEET	
1 OF 1	
PROJECTION	
THIRD ANGLE	
DATE	09/29/00
SIZE	A
DWG FILENAME	FBF11XS F
REV	J

VESEL CODE 01 SIZE: FBF-0101-AB10-020A-NS-B-NCS

VESEL CODE 02 SIZE: FBF-0102-AB10-020A-NS-B-NCS

EATON EATON FILTRATION, LLC
DESIGN CENTER
TINTON FALLS, NEW JERSEY, USA • PORTAGE, MICHIGAN, USA

TITLE FLOWLINE (FBF) BAG FILTER VESSEL
2" 150# FLANGED IN/OUT CONNECTIONS
SS-316 W/BUNA O-RINGS

EATON CORPORATION - CONFIDENTIAL AND PROPRIETARY NOTICE TO PERSONS RECEIVING THIS DRAWING AND/OR TECHNICAL INFORMATION
THIS DOCUMENT, INCLUDING THE DRAWING AND INFORMATION CONTAINED THEREON IS CONFIDENTIAL AND IS THE EXCLUSIVE PROPERTY OF EATON AT ANY TIME. BY TAKING THE
POSSESSION OF THIS DOCUMENT THE RECIPIENT ACKNOWLEDGES AND AGREES THAT THIS DOCUMENT CANNOT BE USED IN ANY MANNER ADVERSE TO THE INTEREST OF EATON AND
THAT NO PORTION OF THIS DRAWING MAY BE COPIED OR OTHERWISE REPRODUCED WITHOUT THE PRIOR WRITTEN CONSENT OF EATON, IN THE CASE OF CONFLICT CONTRACTUAL
PROVISIONS, THIS NOTICE SHALL GOVERN THE STATUS OF THIS DOCUMENT.
2013 EATON CORPORATION - ALL RIGHTS RESERVED.

