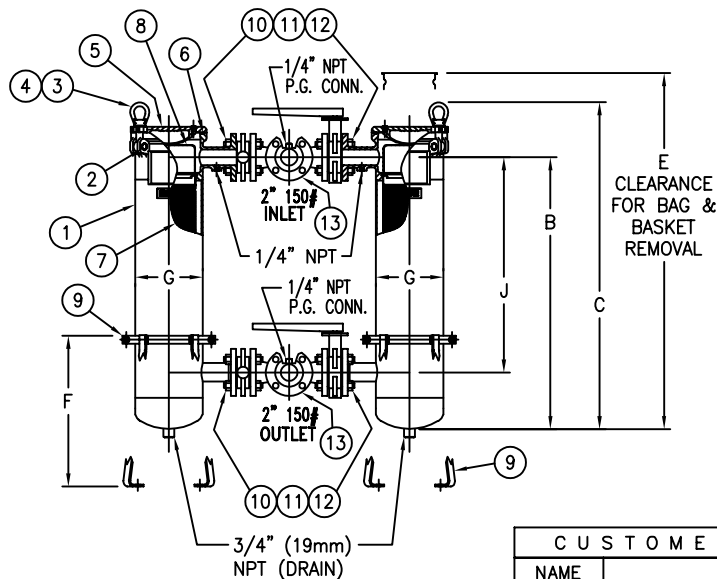
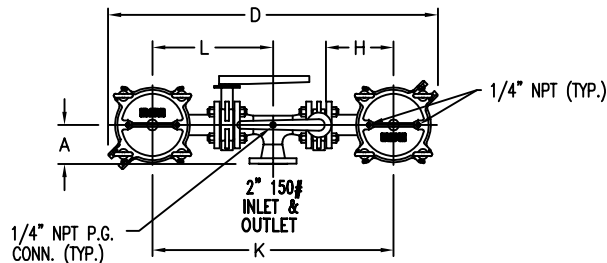
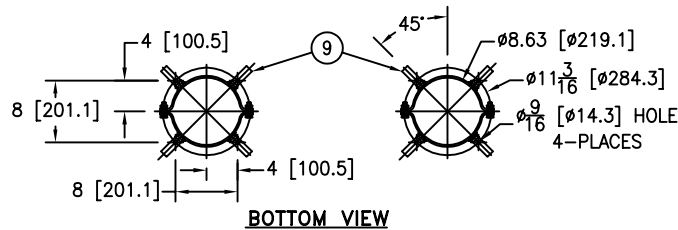


ITEM NUMBER	BAG SIZE	A IN. / MM	B IN. / MM	C IN. / MM	D IN. / MM	E IN. / MM	F IN. / MM	G IN. / MM	H IN. / MM	J IN. / MM	K IN. / MM	L IN. / MM	WEIGHT LBS / KGS
F3AVSB1026	02	5 / 127	34-3/4 / 882.6	41-13/16 / 1062	42-1/8 / 1070	68-3/4 / 1746.2	19-1/4 / 489	8-5/8 / 219	8-11/16 / 220.6	27-1/2 / 698.5	30-7/8 / 784.3	15-7/16 / 392.1	300 / 136



TOLERANCES (UNLESS OTHERWISE SPECIFIED)	
DECIMAL:	.XX ± .030 .XXX ± .010 .XXX ± .005
FRACTIONAL:	± 1/16 NOZZLE Ø TO FLOOR: 1/8" < 4" > 1/2" FACE TO FACE: 1/8" < 4" > 1/2" ANGULAR: ± 1° FLANGES (H/V): ± 1/2" VESSEL OVERALL HT: 1"
BOLT HOLES MUST STRADDLE Ø MACHINED PARTS TO BE FREE OF BURRS FOR ADDITIONAL TOLERANCE DETAILS REF. ES-211, ES-222 AND ES-223	

REVIEWED FOR CLASSIFICATION PER PR-4  
 CRITICAL SIGNIFICANT

CUSTOMER INFO	
NAME	
P.O. NO.	
S.O. NO.	
QUANTITY	
PART NO.	F3AVSB1026

R E V I S I O N S				
REV	DESCRIPTION	BY	ECO	DATE
F	UPDATED DRAWING NOTE 1	FJM	0127742	10/04/16

NO.	PART NAME	MATERIAL
1	BODY	SA-351 CF8M SA-312 TP 316 SA-403 TP 316
2	PIN	SA-193 GR B7, ZINC PL
3	EYE BOLT	SA-193 GR B7, ZINC PL
4	EYE NUT	SA-194 GR 2H, ZINC PL
5	COVER	SA-351 CF8M
6	O-RING P/N L0000024	BUNA-N
7	RESTRAINER BASKET P/N L0001753	316 STAINLESS STEEL
8	BAG HOLD DOWN	316 STAINLESS STEEL
9	ADJUSTABLE LEGS	CSTL EPOXY COATED
10	STUDS	SA-193 GR B7, ZINC PL
11	NUTS	SA-194 GR 2H, ZINC PL
12	BUTTERFLY VALVE 2" 150# WAFER STYLE WITH HANDLE	CAST OR DUCTILE IRON BODY 316 SSTL DISC & SHAFT BUNA-N SEAT
13	INLET/OUTLET MANIFOLDS	316 STAINLESS STEEL

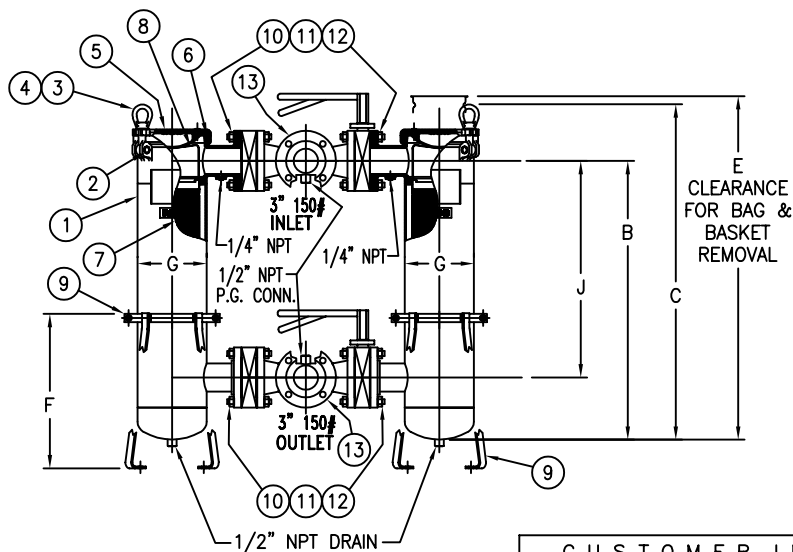
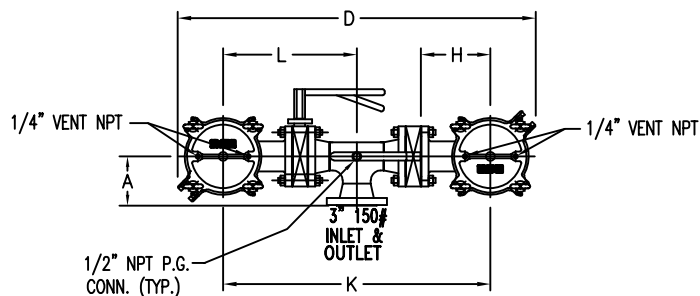
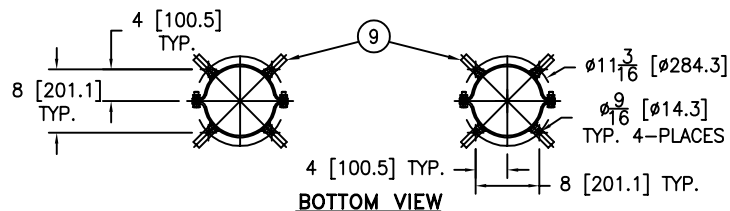
#### NOTES:

- UNITS ARE DESIGNED, FABRICATED AND "UM" STAMPED IN ACCORDANCE WITH THE ASME BOILER & PRESSURE VESSEL CODE SECTION VIII, DIVISION 1, IN COMPLIANCE TO CURRENT MANDATORY EDITION.
- INLET/OUTLET FLANGED CONNECTIONS PER ANSI B16.5.
- MAWP: MDMT:  
150 PSI @ 250° F -20° F @ 150 PSI  
(10.3 BAR @ 121.1° C) (-28.9° C @ 10.3 BAR)
- MAXIMUM OPERATING TEMP. 400° F (204.4° C) WITH VITON O-RING & VITON BUTTERFLY VALVE SEATS.
- DIMENSIONS SHOWN IN [ ] ARE IN MILLIMETERS AND FOR REFERENCE ONLY. ACCEPTANCE OF THIS PART WILL BE BASED ON "INCH" UNITS & TOLERANCES ONLY.

DRAWN BY FM		VESSEL CODE: DSBF-0102-AB10-020A-M-VAL	
SCALE AS DRAWN		HYDRAULICS GROUP FILTRATION DIVISION GALESBURG, MICHIGAN, USA • TINTON FALLS, NEW JERSEY, USA	
RESTRICTION RESTRICTION		TITLE SIDELINE (DSBF) DUPLEX BAG FILTER 2" 150# RF FLANGED CONNECTIONS SSTL W/BUTTERFLY VALVES, MANIFOLDS & BUNA O-RING	
SHEET 1 OF 1		DATE 12/10/01	
PROJECTION THIRD ANGLE		SIZE A	
PART NO. F3AVSB1026		DWG FILENAME DSBF2XS	
		REV F	

EATON CORPORATION - CONFIDENTIAL AND PROPRIETARY NOTICE TO PERSONS RECEIVING THIS DRAWING AND/OR TECHNICAL INFORMATION  
THIS DOCUMENT, INCLUDING THE DRAWING AND INFORMATION CONTAINED THEREON IS CONFIDENTIAL AND IS THE EXCLUSIVE PROPERTY OF EATON AT ANY TIME. BY TAKING THE  
POSSESSION OF THIS DOCUMENT THE RECIPIENT ACKNOWLEDGES AND AGREES THAT THIS DOCUMENT CANNOT BE USED IN ANY MANNER ADVERSE TO THE INTEREST OF EATON AND  
THAT NO PORTION OF THIS DRAWING MAY BE COPIED OR OTHERWISE REPRODUCED WITHOUT THE PRIOR WRITTEN CONSENT OF EATON, IN THE CASE OF CONFLICT OF CONTRACTUAL  
PROVISIONS, THIS NOTICE SHALL GOVERN THE STATUS OF THIS DOCUMENT.  
2016 EATON CORPORATION - ALL RIGHTS RESERVED.

ITEM NUMBER	BAG SIZE	A IN. / MM	B IN. / MM	C IN. / MM	D IN. / MM	E IN. / MM	F IN. / MM	G IN. / MM	H IN. / MM	J IN. / MM	K IN. / MM	L IN. / MM	WEIGHT LBS / KGS
F3AVSB1019	O2	6-1/8 / 155.5	34-3/4 / 882.6	41-13/16 / 1062	44-5/8 / 1133.4	68-3/4 / 1746.2	19-1/4 / 489	8-5/8 / 219	8-11/16 / 220.6	27 / 685.8	33-3/8 / 847.7	16-11/16 / 423.8	370 / 168



R E V I S I O N S				
REV	DESCRIPTION	BY	ECO	DATE
H	UPDATED DRAWING	FJM	0087295	07/16/13

NO.	PART NAME	MATERIAL
1	BODY	SA-351 CF8M SA-312 TP 316 SA-403 TP 316
2	PIN	SA-193 GR B7, ZINC PL
3	EYE BOLT	SA-193 GR B7, ZINC PL
4	EYE NUT	SA-194 GR 2H, ZINC PL
5	COVER	SA-351 CF8M
6	O-RING P/N L0000024	BUNA-N
7	RESTRAINER BASKET P/N L0001753	316 STAINLESS STEEL
8	BAG HOLD DOWN	316 STAINLESS STEEL
9	ADJUSTABLE LEGS	CSTL EPOXY COATED
10	STUDS	SA-193 GR B7, ZINC PL
11	NUTS	SA-194 GR 2H, ZINC PL
12	BUTTERFLY VALVE 3" 150# WAFER STYLE WITH HANDLE	CAST OR DUCTILE IRON BODY 316 SSTL DISC & SHAFT BUNA-N SEAT
13	INLET/OUTLET MANIFOLDS	316 STAINLESS STEEL

#### NOTES:

- UNITS ARE TO BE DESIGNED, FABRICATED & "UM" STAMPED IN ACCORDANCE WITH ASME SECT. VIII, DIV. 1 BOILER & PRESSURE VESSEL CODE, IN COMPLIANCE TO LATEST ADDENDA.
- INLET/OUTLET FLANGED CONNECTIONS PER ANSI B16.5.
- MAWP: MDMT:  
150 PSI @ 250° F -20° F @ 150 PSI  
(10.3 BAR @ 121.1° C) (-28.9° C @ 10.3 BAR)
- MAXIMUM OPERATING TEMP. 400° F (204.4° C) WITH VITON O-RING & VITON BUTTERFLY VALVE SEATS.
- DIMENSIONS SHOWN IN [ ] ARE IN MILLIMETERS AND FOR REFERENCE ONLY. ACCEPTANCE OF THIS PART WILL BE BASED ON "INCH" UNITS & TOLERANCES ONLY.

VESSEL CODE: DSBF-0102-AB10-030A-M-VAL

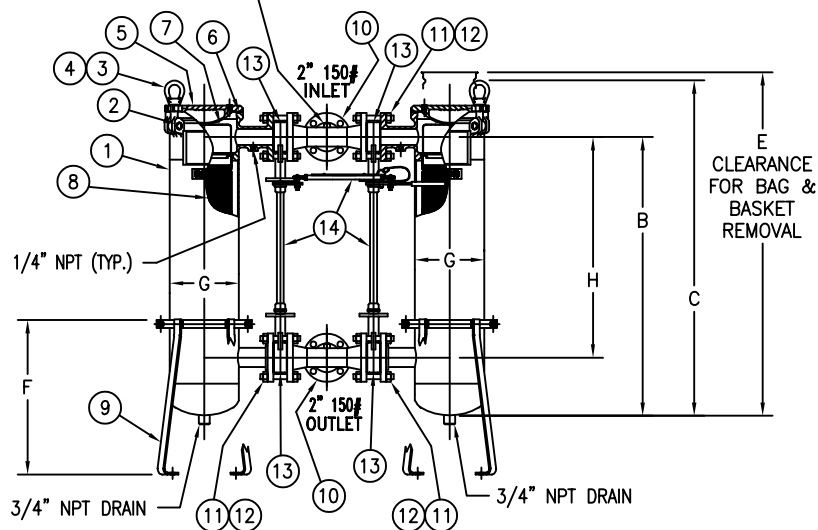
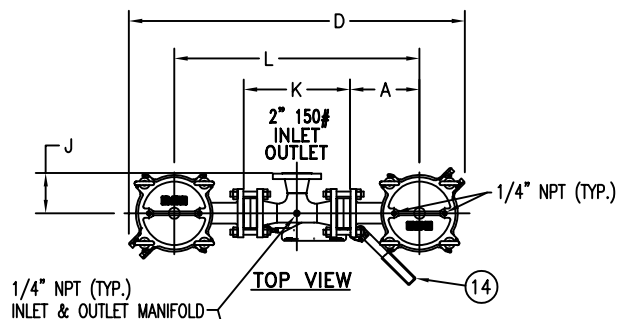
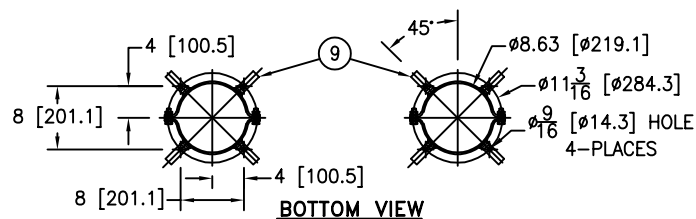
DRAWN BY FJM	EATON FILTRATION, LLC DESIGN CENTER TINTON FALLS, NEW JERSEY, USA PORTAGE, MICHIGAN, USA	
SCALE AS DRAWN		
RESTRICTION RESTRICTION	TITLE SIDELINE (DSBF) DUPLEX BAG FILTER 3\"/>	
SHEET 1 OF 1	DATE 05/14/02	
PROJECTION THIRD ANGLE	SIZE A	DWG FILENAME DSBF3-3XS
<small>EATON CORPORATION - CONFIDENTIAL AND PROPRIETARY NOTICE TO PERSONS RECEIVING THIS DRAWING AND/OR TECHNICAL INFORMATION: THIS DOCUMENT, INCLUDING THE DRAWING AND INFORMATION CONTAINED THEREON IS CONFIDENTIAL AND IS THE EXCLUSIVE PROPERTY OF EATON AT ANY TIME. BY TAKING THE POSSESSION OF THIS DOCUMENT THE RECIPIENT ACKNOWLEDGES AND AGREES THAT THIS DOCUMENT CANNOT BE USED IN ANY MANNER ADVERSE TO THE INTEREST OF EATON AND THAT NO PORTION OF THIS DRAWING MAY BE COPIED OR OTHERWISE REPRODUCED WITHOUT THE PRIOR WRITTEN CONSENT OF EATON. IN THE CASE OF CONFLICT OF CONTRACTUAL PROVISIONS, THIS NOTICE SHALL GOVERN THE STATUS OF THIS DOCUMENT. 2013 EATON CORPORATION - ALL RIGHTS RESERVED.</small>		

C U S T O M E R I N F O	
NAME	
P.O. NO.	
S.O. NO.	
QUANTITY	
PART NO.	F3AVSB1019

T O L E R A N C E S (UNLESS OTHERWISE SPECIFIED)	
DECIMAL:	.X ± .030 .XX ± .010 .XXX ± .005
FRACTIONAL:	± 1/16
NOZZLE Ø TO FLOOR:	1/8" < 4" > 1/2"
FACE TO FACE:	1/8" < 4" > 1/2"
ANGULAR:	± 1°
FLANGES (H/V):	± 1/2"
VESSEL OVERALL HT:	1"
BOLT HOLES MUST STRADDLE Ø MACHINED PARTS TO BE FREE OF BURRS FOR ADDITIONAL TOLERANCE DETAILS REF. ES-211, ES-222 AND ES-223	

REVIEWED FOR CLASSIFICATION PER PR-4  
 CRITICAL SIGNIFICANT

ITEM NUMBER	BAG SIZE	A IN. / MM	B IN. / MM	C IN. / MM	D IN. / MM	E IN. / MM	F IN. / MM	G IN. / MM	H IN. / MM	J IN. / MM	K IN. / MM	L IN. / MM	WEIGHT LBS / KGS
F3AVSB00222	02	8-11/16 / 220.6	34-3/4 / 882.6	41-13/16 / 1062	41-7/8 / 1063.6	69 / 1752.6	19-1/4 / 488.9	8-5/8 / 219	27-1/2 / 698.5	5 / 127	13-1/4 / 336.5	30-5/8 / 777.8	340 / 154.2



R E V I S I O N S				
REV	DESCRIPTION	BY	ECO	DATE
C	UPDATED DRAWING	FJM	0087416	07/18/13

NO.	PART NAME	MATERIAL
1	BODY	SA-351 CF8M SA-312 TP 316 SA-403 TP 316
2	PIN	SA-193 GR B7, ZINC PL
3	EYE BOLT	SA-193 GR B7, ZINC PL
4	EYE NUT	SA-194 GR 2H, ZINC PL
5	COVER	SA-351 CF8M
6	O-RINGS P/N L0000024	BUNA-N
7	BAG HOLD DOWN	316 STAINLESS STEEL
8	RESTRAINER BASKET P/N L0001753	316 STAINLESS STEEL
9	ADJUSTABLE LEGS	CSTL EPOXY COATED
10	INLET/OUTLET MANIFOLDS	316 STAINLESS STEEL
11	MANIFOLD BOLTING	SA-193 GR B7, ZINC PL
12	MANIFOLD NUTS	SA-194 GR 2H, ZINC PL
13	BUTTERFLY VALVE 2" 150# WAFER STYLE NO HANDLE	CAST OR DUCTILE IRON BODY SSTL DISC & SHAFT BUNA-N SEAT
14	VALVE LINKAGE W/HANDLE	304 STAINLESS STEEL

#### NOTES:

- UNITS ARE TO BE DESIGNED, FABRICATED & "UM" STAMPED IN ACCORDANCE WITH ASME SECT. VIII, DIV. 1 BOILER & PRESSURE VESSEL CODE, IN COMPLIANCE TO LATEST ADDENDA.
- INLET/OUTLET FLANGED CONNECTIONS PER ANSI B16.5.
- MAWP: 150 PSI @ 250° F (10.3 BAR @ 121.1° C)  
MDMT: -20° F @ 150 PSI (-28.9° C @ 10.3 BAR)
- MAXIMUM OPERATING TEMP. 400° F (204.4° C) WITH VITON O-RING & VITON BUTTERFLY VALVE SEATS.
- DIMENSIONS SHOWN IN [ ] ARE IN MILLIMETERS AND FOR REFERENCE ONLY. ACCEPTANCE OF THIS PART WILL BE BASED ON "INCH" UNITS & TOLERANCES ONLY.

VESEL CODE: DSBF-0102-AB10-020A-LINK

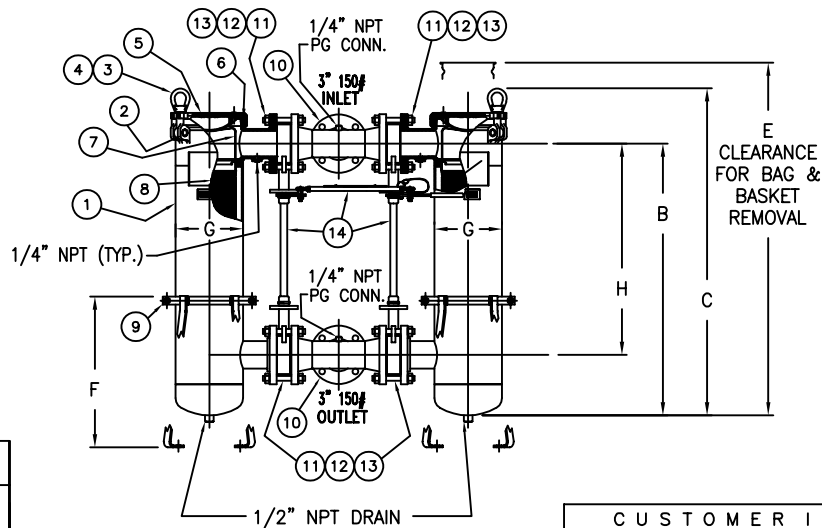
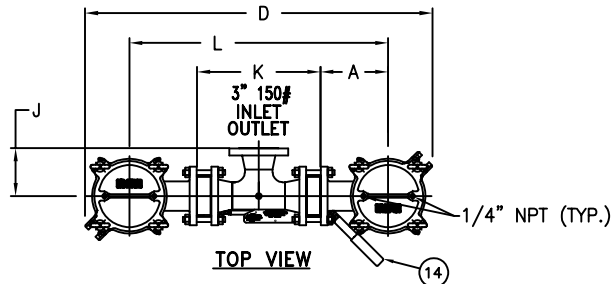
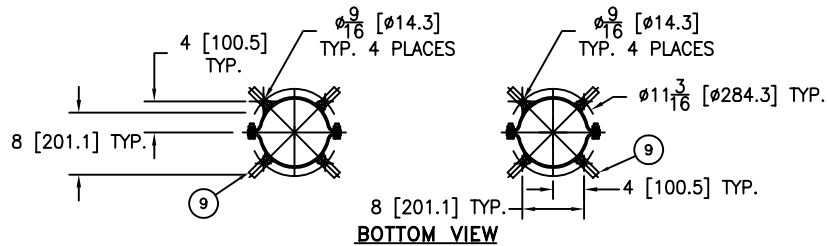
DRAWN BY FJM	EATON FILTRATION, LLC DESIGN CENTER TINTON FALLS, NEW JERSEY, USA PORTAGE, MICHIGAN, USA	
SCALE AS DRAWN		
RESTRICTION RESTRICTION	TITLE SIDELINE (DSBF-0102) DUPLEX BAG FILTER 2" 150# RF FLANGED CONNECTIONS SSTL W/ BUTTERFLY VALVES LINKED, MANIFOLDS & BUNA O-RING	
SHEET 1 OF 1	DATE 04/27/06	SIZE A
PROJECTION THIRD ANGLE	DWG FILENAME DSBF02XS-2KL	REV C
<small>EATON CORPORATION - CONFIDENTIAL AND PROPRIETARY NOTICE TO PERSONS RECEIVING THIS DRAWING AND/OR TECHNICAL INFORMATION: THIS DOCUMENT, INCLUDING THE DRAWING AND INFORMATION CONTAINED THEREON IS CONFIDENTIAL AND IS THE EXCLUSIVE PROPERTY OF EATON AT ANY TIME, BY TAKING THE POSSESSION OF THIS DOCUMENT THE RECIPIENT ACKNOWLEDGES AND AGREES THAT THIS DOCUMENT CANNOT BE USED IN ANY MANNER ADVERSE TO THE INTEREST OF EATON AND THAT NO PORTION OF THIS DRAWING MAY BE COPIED OR OTHERWISE REPRODUCED WITHOUT THE PRIOR WRITTEN CONSENT OF EATON, IN THE CASE OF CONFLICT OF CONTRACTUAL PROVISIONS, THIS NOTICE SHALL GOVERN THE STATUS OF THIS DOCUMENT. 2013 EATON CORPORATION - ALL RIGHTS RESERVED.</small>		

C U S T O M E R I N F O	
NAME	
P.O. NO.	
S.O. NO.	
QUANTITY	
PART NO.	F3AVSB00222

T O L E R A N C E S (UNLESS OTHERWISE SPECIFIED)	
DECIMAL:	.X ± .030 .XX ± .010 .XXX ± .005
FRACTIONAL:	± 1/16
NOZZLE Ø TO FLOOR:	8" < 4' > 1/2"
FACE TO FACE:	8" < 4' > 1/2"
ANGULAR:	± 1°
FLANGES (H/V):	± 1/2"
VESSEL OVERALL HT:	1"
BOLT HOLES MUST STRADDLE Ø MACHINED PARTS TO BE FREE OF BURRS FOR ADDITIONAL TOLERANCE DETAILS REF. ES-211, ES-222 AND ES-223	

REVIEWED FOR CLASSIFICATION PER PR-4  
 CRITICAL SIGNIFICANT

ITEM NUMBER	BAG SIZE	A IN. / MM	B IN. / MM	C IN. / MM	D IN. / MM	E IN. / MM	F IN. / MM	G IN. / MM	H IN. / MM	J IN. / MM	K IN. / MM	L IN. / MM	WEIGHT LBS / KGS
F3AVSB00322	02	8-11/16 / 220.6	34-3/4 / 882.6	41-13/16 / 1062	44-3/8 / 1127.1	69 / 1752.6	19-1/4 / 488.9	8-5/8 / 219	27 / 685.8	6-1/8 / 155.5	15-3/4 / 400	33-1/8 / 841.3	370 / 167.8



TOLERANCES (UNLESS OTHERWISE SPECIFIED)	
DECIMAL:	.X ± .030 .XX ± .010 .XXX ± .005
FRACTIONAL:	± 1/16
NOZZLE Ø TO FLOOR:	1/8" < 4' > 1/4"
FACE TO FACE:	1/8" < 4' > 1/4"
ANGULAR:	± 1'
FLANGES (H/V):	± 1/2"
VESSEL OVERALL HT:	1"
BOLT HOLES MUST STRADDLE Ø MACHINED PARTS TO BE FREE OF BURRS FOR ADDITIONAL TOLERANCE DETAILS REF. ES-211, ES-222 AND ES-223	

REVIEWED FOR CLASSIFICATION PER PR-4  
 CRITICAL SIGNIFICANT

#### REVISIONS



REV	DESCRIPTION	BY	ECO	DATE
E	UPDATE DRAWING	FJM	0135129	05/18/17

NO.	PART NAME	MATERIAL
1	BODY	SA-351 CF8M SA-312 TP 316 SA-403 TP 316
2	PIN	SA-193 GR B7, ZINC PL
3	EYE BOLT	SA-193 GR B7, ZINC PL
4	EYE NUT	SA-194 GR 2H, ZINC PL
5	COVER	SA-351 CF8M
6	O-RINGS P/N L0000024	BUNA-N
7	BAG HOLD DOWN	316 STAINLESS STEEL
8	RESTRAINER BASKET P/N L0001753	316 STAINLESS STEEL
9	ADJUSTABLE LEGS	CSTL EPOXY COATED
10	INLET/OUTLET MANIFOLDS	316 STAINLESS STEEL
11	MANIFOLD BOLTING	SA-193 GR B7, ZINC PL
12	MANIFOLD NUTS	SA-194 GR 2H, ZINC PL
13	BUTTERFLY VALVE 3" 150# WAFER STYLE NO HANDLE	CAST OR DUCTILE IRON BODY SSTL DISC & SHAFT BUNA-N SEAT
14	VALVE LINKAGE W/HANDLE	304 STAINLESS STEEL

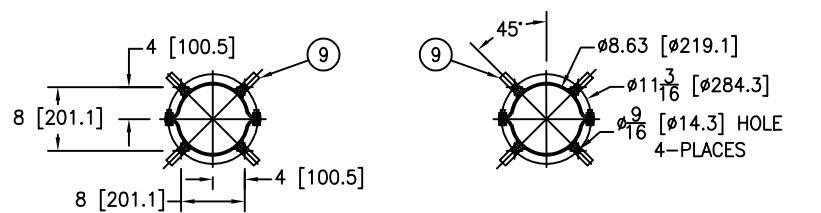
#### NOTES:

- UNITS ARE DESIGNED, FABRICATED AND "UM" STAMPED IN ACCORDANCE WITH THE ASME BOILER & PRESSURE VESSEL CODE SECTION VIII, DIVISION 1, IN COMPLIANCE TO CURRENT MANDATORY EDITION.
- INLET/OUTLET FLANGED CONNECTIONS PER ANSI B16.5.
- MAWP: MDMT:  
150 PSI @ 250' F -20' F @ 150 PSI  
(10.3 BAR @ 121.1' C) (-28.9' C @ 10.3 BAR)
- MAXIMUM OPERATING TEMP. 400' F (204.4' C) WITH VITON O-RING & VITON BUTTERFLY VALVE SEATS.
- DIMENSIONS SHOWN IN [ ] ARE IN MILLIMETERS AND FOR REFERENCE ONLY. ACCEPTANCE OF THIS PART WILL BE BASED ON "INCH" UNITS & TOLERANCES ONLY.

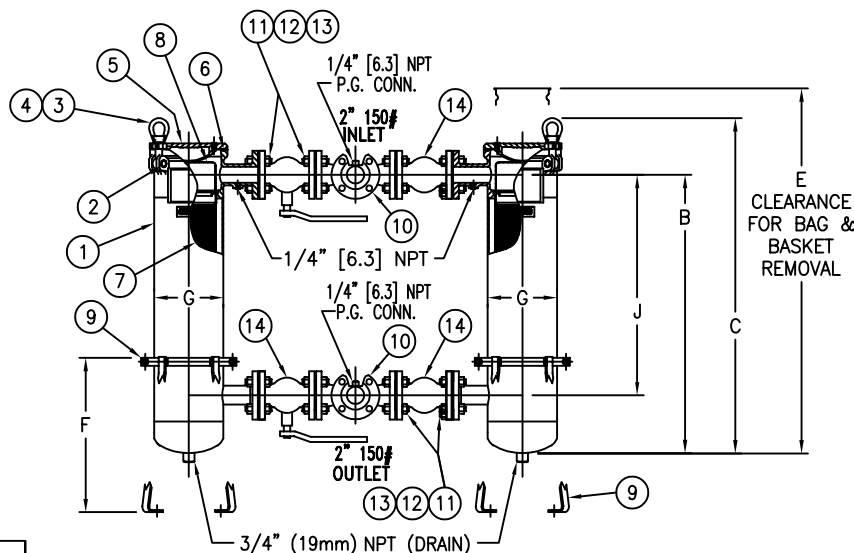
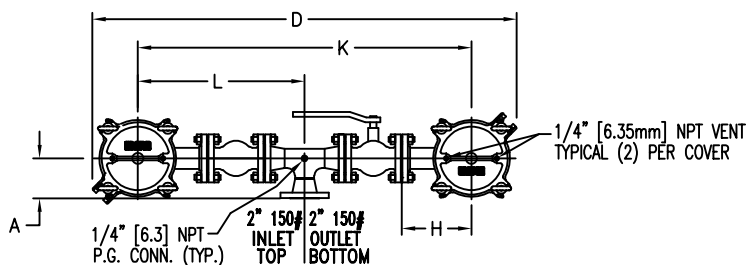
VESSEL CODE: DSBF-0102-AB10-030A-M-LINK

DRAWN BY FJM		 HYDRAULICS GROUP FILTRATION DIVISION GALESBURG, MICHIGAN, USA • TINTON FALLS, NEW JERSEY, USA			
SCALE AS DRAWN					
RESTRICTION RESTRICTION		TITLE SIDELINE (DSBF-0102) DUPLEX BAG FILTER 3"-150#RF FLANGED CONNECTION SSTL W/ BUTTERFLY VALVE LINKED, MANIFOLDS, & BUNA O-RING			
SHEET 1 OF 1					
PROJECTION THIRD ANGLE 		DATE 12/12/03	SIZE A	DWG FILENAME DSBF02XS-3KL	REV E
<small>EATON CORPORATION - CONFIDENTIAL AND PROPRIETARY NOTICE TO PERSONS RECEIVING THIS DRAWING AND/OR TECHNICAL INFORMATION THIS DOCUMENT, INCLUDING THE DRAWING AND INFORMATION CONTAINED THEREON IS CONFIDENTIAL AND IS THE EXCLUSIVE PROPERTY OF EATON AT ANY TIME, BY TAKING THE POSSESSION OF THIS DOCUMENT THE RECIPIENT ACKNOWLEDGES AND AGREES THAT THIS DOCUMENT CANNOT BE USED IN ANY MANNER ADVERSE TO THE INTEREST OF EATON AND THAT NO PORTION OF THIS DRAWING MAY BE COPIED OR OTHERWISE REPRODUCED WITHOUT THE PRIOR WRITTEN CONSENT OF EATON, IN THE CASE OF CONFLICTION CONTRACTUAL PROVISIONS, THIS NOTICE SHALL GOVERN THE STATUS OF THIS DOCUMENT. 2017 EATON CORPORATION - ALL RIGHTS RESERVED.</small>					

ITEM NUMBER	BAG SIZE	A IN. / MM	B IN. / MM	C IN. / MM	D IN. / MM	E IN. / MM	F IN. / MM	G IN. / MM	H IN. / MM	J IN. / MM	K IN. / MM	L IN. / MM	WEIGHT LBS / KGS
F3AVSB00310	02	5 / 127	34-3/4 / 882.6	41-13/16 / 1602	53 / 1346.2	69 / 1752.6	19-1/4 / 489	8-5/8 / 219	8-11/16 / 220.6	27-1/2 / 698.5	41-5/8 / 1057.2	20-13/16 / 528.6	320 / 145.1



MOUNTING DETAIL



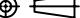
R E V I S I O N S				
REV	DESCRIPTION	BY	ECO	DATE
D	UPDATED DRAWING	FJM	0087202	07/12/13

NO.	PART NAME	MATERIAL
1	BODY	SA-351 CF8M SA-312 TP 316 SA-403 TP 316
2	PIN	SA-193 GR B7, ZINC PL
3	EYE BOLT	SA-193 GR B7, ZINC PL
4	EYE NUT	SA-194 GR 2H, ZINC PL
5	COVER	SA-351 CF8M
6	O-RING P/N L0000024	BUNA-N
7	RESTRAINER BASKET P/N L0001753	316 STAINLESS STEEL
8	BAG HOLD DOWN	316 STAINLESS STEEL
9	ADJUSTABLE LEGS	CSTL EPOXY COATED
10	INLET/OUTLET MANIFOLDS	316 STAINLESS STEEL
11	STUDS	SA-193 GR B7, ZINC PL
12	NUTS	SA-194 GR 2H, ZINC PL
13	MANIFOLD GASKETS	BLUEGARD 3000
14	2" 150# BALL VALVES	SEE NOTE 6

NOTES:

- UNITS ARE TO BE DESIGNED, FABRICATED & "UM" STAMPED IN ACCORDANCE WITH ASME SECT. VIII, DIV. 1 BOILER & PRESSURE VESSEL CODE, IN COMPLIANCE TO LATEST ADDENDA.
- INLET/OUTLET FLANGED CONNECTIONS PER ANSI B16.5.
- MAWP: MDMT:  
150 PSI @ 250° F -20° F @ 150 PSI  
(10.3 BAR @ 121.1° C) (-28.9° C @ 10.3 BAR)
- MAXIMUM OPERATING TEMP. 400° F (204.4° C) WITH VITON O-RING.
- DIMENSIONS SHOWN IN [ ] ARE IN MILLIMETERS AND FOR REFERENCE ONLY. ACCEPTANCE OF THIS PART WILL BE BASED ON "INCH" UNITS & TOLERANCES ONLY.
- 2" 150# FLANGED BALL VALVES STAINLESS STEEL EATON STANDARD P/N 8718100950 ACE # A201 FULL PORT

VESSEL CODE: DSBF-0102-AB10-020A-BVAL

DRAWN BY FJM		 EATON FILTRATION, LLC DESIGN CENTER TINTON FALLS, NEW JERSEY, USA PORTAGE, MICHIGAN, USA			
SCALE AS DRAWN		TITLE SIDELINE (DSBF) DUPLEX BAG FILTER 2" 150# RF FLANGED CONNECTIONS SSTL W/BALL VALVES, MANIFOLDS & BUNA O-RINGS			
RESTRICTION RESTRICTION					
SHEET 1 OF 1					
PROJECTION THIRD ANGLE 		DATE 07/27/04	SIZE A	DWG FILENAME DSBF02-XSBV	REV D
<small>EATON CORPORATION - CONFIDENTIAL AND PROPRIETARY NOTICE TO PERSONS RECEIVING THIS DRAWING AND/OR TECHNICAL INFORMATION: THIS DOCUMENT, INCLUDING THE DRAWING AND INFORMATION CONTAINED THEREON IS CONFIDENTIAL AND IS THE EXCLUSIVE PROPERTY OF EATON AT ANY TIME. BY TAKING THE POSSESSION OF THIS DOCUMENT THE RECIPIENT ACKNOWLEDGES AND AGREES THAT THIS DOCUMENT CANNOT BE USED IN ANY MANNER ADVERSE TO THE INTEREST OF EATON AND THAT NO PORTION OF THIS DRAWING MAY BE COPIED OR OTHERWISE REPRODUCED WITHOUT THE PRIOR WRITTEN CONSENT OF EATON. IN THE CASE OF CONFLICTION CONTRACTUAL PROVISIONS, THIS NOTICE SHALL GOVERN THE STATUS OF THIS DOCUMENT.</small>					

C U S T O M E R I N F O	
NAME	
P.O. NO.	
S.O. NO.	
QUANTITY	
PART NO.	F3AVSB00310

T O L E R A N C E S (UNLESS OTHERWISE SPECIFIED)	
DECIMAL:	.X ± .030 .XX ± .010 .XXX ± .005
FRACTIONAL:	± 1/16 ± 1/8 ± 1/4
NOZZLE & TO FLOOR:	1/8" < 4' > 1/4"
FACE TO FACE:	1/8" < 4' > 1/4"
ANGULAR:	± 1°
FLANGES (H/V):	± 1/2"
VESSEL OVERALL HT:	± 1"
BOLT HOLES MUST STRADDLE & MACHINED PARTS TO BE FREE OF BURRS FOR ADDITIONAL TOLERANCE DETAILS. REF. ES-211, ES-222 AND ES-223	

REVIEWED FOR CLASSIFICATION PER PR-4  
CRITICAL SIGNIFICANT